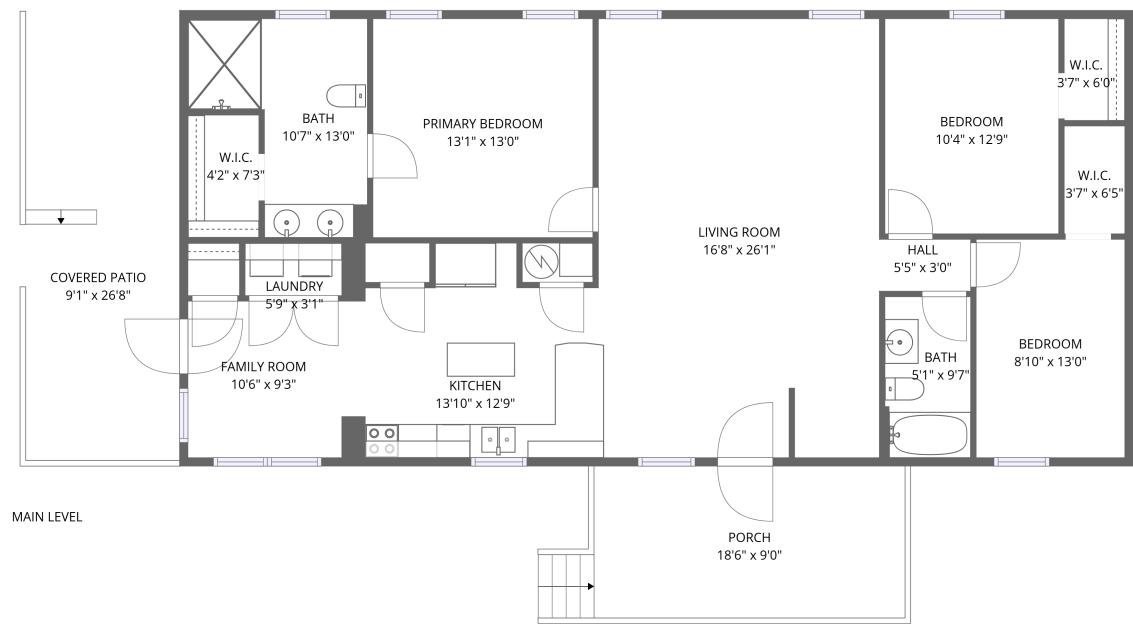


Home data report

708 Mountain Meadow Drive, Vinton, Bedford County, Virginia,
United States, 24179



Total Area: 1448 sq. ft

1st Floor: 1448 sq. ft

Excluded: Covered patio 244 sq. ft, Porch 179 sq. ft, Walls: 83 sq. ft

Property summary

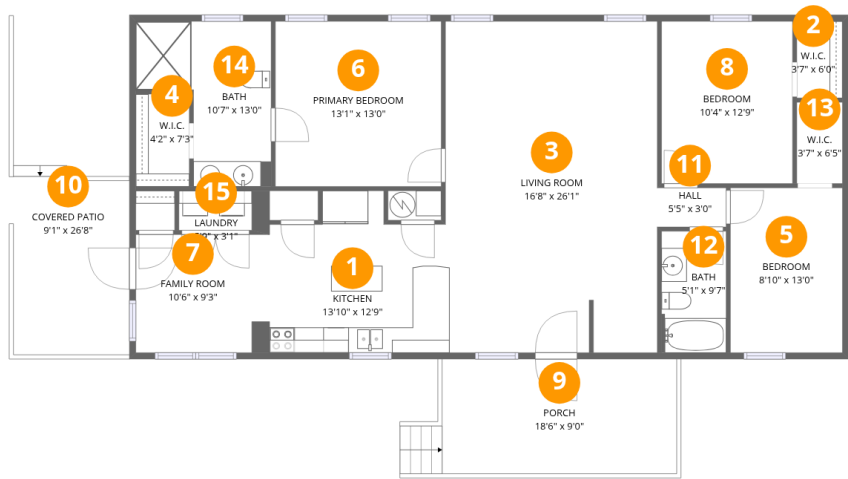
 **1** Floors

 **3** Bedrooms

 **2** Bathrooms

Home data report

708 Mountain Meadow Drive, Vinton, Bedford County, Virginia,
United States, 24179



Room dimensions

Floor 1 Total:1448sqft Excluded: 423sqft

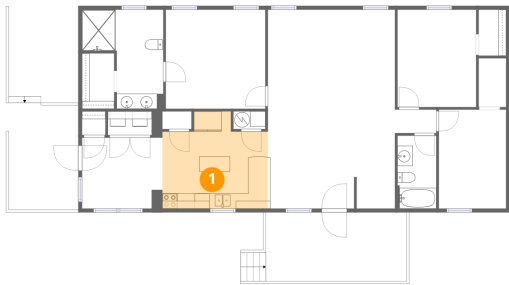
#		Dimensions	sqft	Counted as living area
1	Kitchen	13'10" x 12'9"	176 sq. ft	Yes
2	W.I.C.	3'7" x 6'0"	22 sq. ft	Yes
3	Living Room	16'8" x 26'1"	434 sq. ft	Yes
4	W.I.C.	4'2" x 7'3"	31 sq. ft	Yes
5	Bedroom	8'10" x 13'0"	114 sq. ft	Yes
6	Primary Bedroom	13'1" x 13'0"	169 sq. ft	Yes
7	Family Room	10'6" x 9'3"	97 sq. ft	Yes
8	Bedroom	10'4" x 12'9"	132 sq. ft	Yes
9	Porch	18'6" x 9'0"	166 sq. ft	No
10	Covered Patio	9'1" x 26'8"	243 sq. ft	No
11	Hall	5'5" x 3'0"	16 sq. ft	Yes

Home data report

**708 Mountain Meadow Drive, Vinton, Bedford County, Virginia,
United States, 24179**

#		Dimensions	sqft	Counted as living area
12	Bath	5'1" x 9'7"	48 sq. ft	Yes
13	W.I.C.	3'7" x 6'5"	23 sq. ft	Yes
14	Bath	10'7" x 13'0"	138 sq. ft	Yes
15	Laundry	5'9" x 3'1"	18 sq. ft	Yes

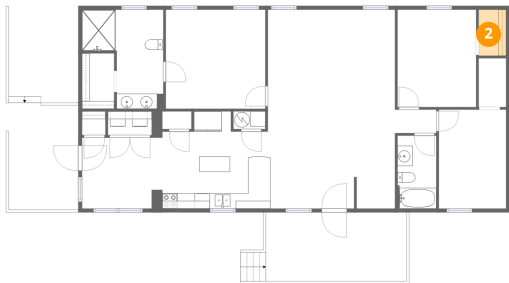
1 Floor 1 - Kitchen



Dimensions: 13'10" x 12'9"
Area: 176 sq. ft
Counted as living area: Yes

Heated: Yes
Finished: Yes
Enclosed: Yes
Contiguous: Yes
Permitted: Yes
Wet space: No
Addition: No
Conversion: No

2 Floor 1 - W.I.C.

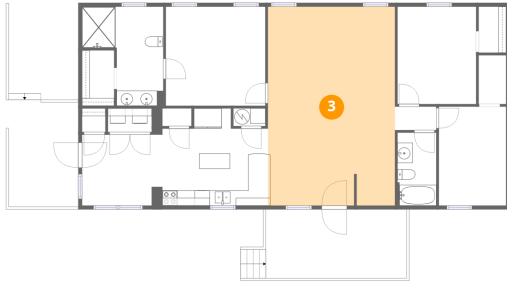


Dimensions: 3'7" x 6'0"
Area: 22 sq. ft
Counted as living area: Yes

Heated: Yes
Finished: Yes
Enclosed: Yes
Contiguous: Yes
Permitted: Yes
Wet space: No
Addition: No
Conversion: No

708 Mountain Meadow Drive, Vinton, Bedford County, Virginia,
United States, 24179

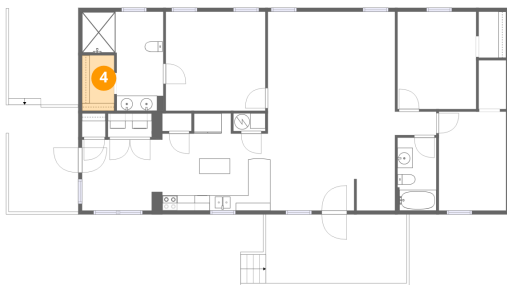
3 Floor 1 - Living Room



Dimensions: 16'8" x 26'1"
Area: 434 sq. ft
Counted as living area: Yes

Heated: Yes
Finished: Yes
Enclosed: Yes
Contiguous: Yes
Permitted: Yes
Wet space: No
Addition: No
Conversion: No

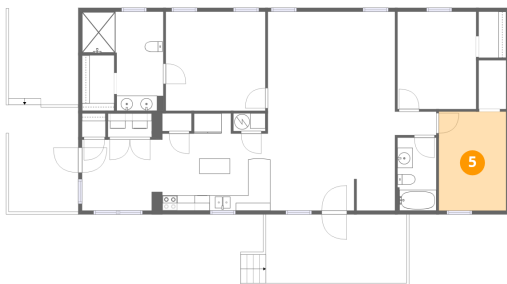
4 Floor 1 - W.I.C.



Dimensions: 4'2" x 7'3"
Area: 31 sq. ft
Counted as living area: Yes

Heated: Yes
Finished: Yes
Enclosed: Yes
Contiguous: Yes
Permitted: Yes
Wet space: No
Addition: No
Conversion: No

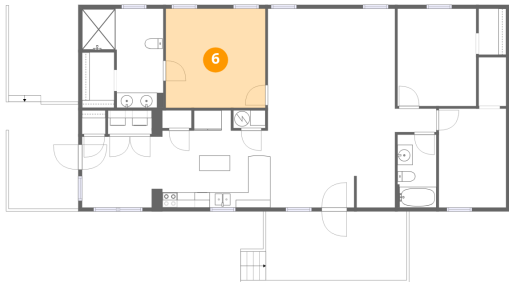
5 Floor 1 - Bedroom



Dimensions: 8'10" x 13'0"
Area: 114 sq. ft
Counted as living area: Yes

Heated: Yes
Finished: Yes
Enclosed: Yes
Contiguous: Yes
Permitted: Yes
Wet space: No
Addition: No
Conversion: No

6 Floor 1 - Primary Bedroom



Dimensions: 13'1" x 13'0"
Area: 169 sq. ft
Counted as living area: Yes

Heated: Yes
Finished: Yes
Enclosed: Yes
Contiguous: Yes
Permitted: Yes
Wet space: No
Addition: No
Conversion: No

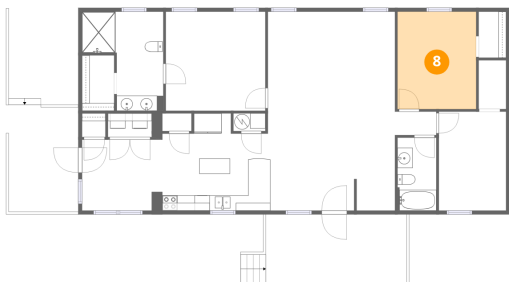
7 Floor 1 - Family Room



Dimensions: 10'6" x 9'3"
Area: 97 sq. ft
Counted as living area: Yes

Heated: Yes
Finished: Yes
Enclosed: Yes
Contiguous: Yes
Permitted: Yes
Wet space: No
Addition: No
Conversion: No

8 Floor 1 - Bedroom



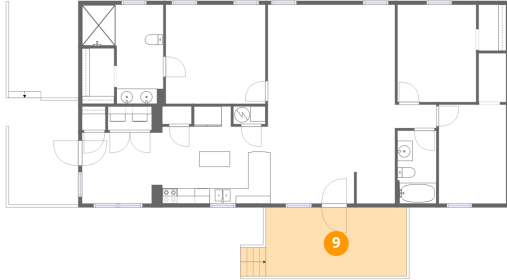
Dimensions: 10'4" x 12'9"
Area: 132 sq. ft
Counted as living area: Yes

Heated: Yes
Finished: Yes
Enclosed: Yes
Contiguous: Yes
Permitted: Yes
Wet space: No
Addition: No
Conversion: No

Home data report

708 Mountain Meadow Drive, Vinton, Bedford County, Virginia,
United States, 24179

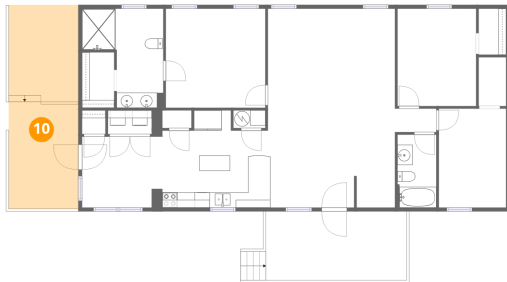
9 Floor 1 - Porch



Dimensions: 18'6" x 9'0"
Area: 166 sq. ft
Counted as living area: No

Heated: No
Finished: No
Enclosed: No
Contiguous: Yes
Permitted: Yes
Wet space: No
Addition: No
Conversion: No

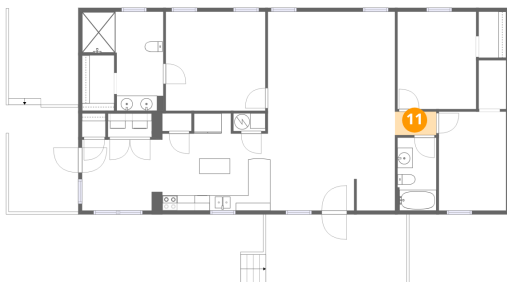
10 Floor 1 - Covered Patio



Dimensions: 9'1" x 26'8"
Area: 243 sq. ft
Counted as living area: No

Heated: No
Finished: No
Enclosed: No
Contiguous: Yes
Permitted: Yes
Wet space: No
Addition: No
Conversion: No

11 Floor 1 - Hall



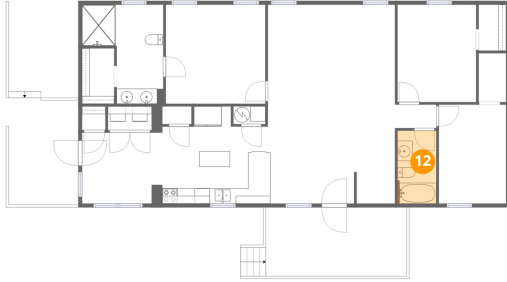
Dimensions: 5'5" x 3'0"
Area: 16 sq. ft
Counted as living area: Yes

Heated: Yes
Finished: Yes
Enclosed: Yes
Contiguous: Yes
Permitted: Yes
Wet space: No
Addition: No
Conversion: No

Home data report

708 Mountain Meadow Drive, Vinton, Bedford County, Virginia,
United States, 24179

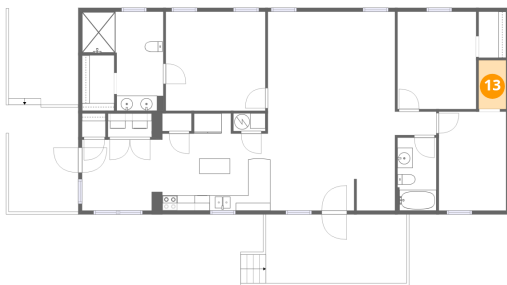
12 Floor 1 - Bath



Dimensions: 5'1" x 9'7"
Area: 48 sq. ft
Counted as living area: Yes

Heated: Yes
Finished: Yes
Enclosed: Yes
Contiguous: Yes
Permitted: Yes
Wet space: Yes
Addition: No
Conversion: No

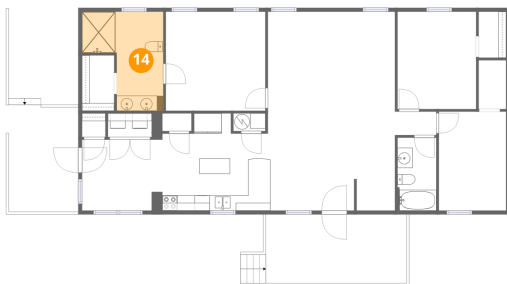
13 Floor 1 - W.I.C.



Dimensions: 3'7" x 6'5"
Area: 23 sq. ft
Counted as living area: Yes

Heated: Yes
Finished: Yes
Enclosed: Yes
Contiguous: Yes
Permitted: Yes
Wet space: No
Addition: No
Conversion: No

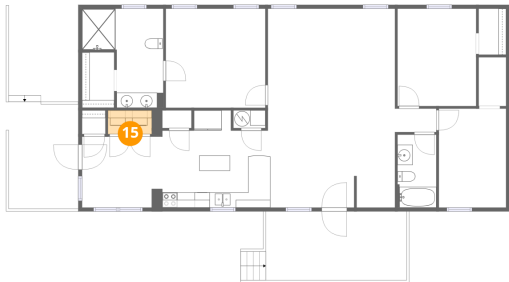
14 Floor 1 - Bath



Dimensions: 10'7" x 13'0"
Area: 138 sq. ft
Counted as living area: Yes

Heated: Yes
Finished: Yes
Enclosed: Yes
Contiguous: Yes
Permitted: Yes
Wet space: Yes
Addition: No
Conversion: No

15 Floor 1 - Laundry



Dimensions: 5'9" x 3'1"
Area: 18 sq. ft
Counted as living area: Yes

Heated: Yes
Finished: Yes
Enclosed: Yes
Contiguous: Yes
Permitted: Yes
Wet space: No
Addition: No
Conversion: No