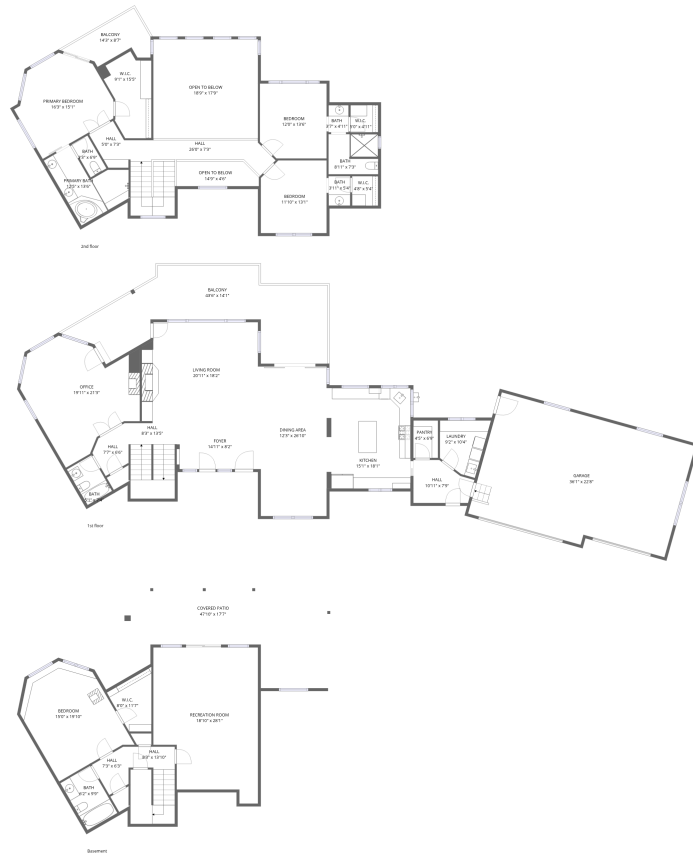


Home data report

7260 S Frog Hollow Ln, Evergreen, CO, US



Total Area: 4037 sq. ft

Basement: 1031 sq. ft, 1st Floor: 1817 sq. ft, 2nd Floor: 1189 sq. ft

Excluded: Covered patio 503 sq. ft, Garage 788 sq. ft, Balcony 557 sq. ft, Open to below 394 sq. ft, Walls: 364 sq. ft

Property summary





Room dimensions

Floor 1 Below grade

Total: 1031 sqft

Excluded: 503 sqft

#		Dimensions	sqft	Counted as living area
1	Bedroom	15'0" x 19'10"	298 sq. ft	Yes
2	Covered Patio	47'10" x 17'7"	841 sq. ft	No
3	Hall	8'3" x 13'10"	115 sq. ft	Yes
4	Bath	6'2" x 9'9"	60 sq. ft	Yes
5	Recreation Room	18'10" x 28'1"	527 sq. ft	Yes
6	W.I.C.	8'0" x 11'7"	93 sq. ft	Yes
7	Hall	7'3" x 6'3"	45 sq. ft	Yes

Home data report

7260 S Frog Hollow Ln, Evergreen, CO, US



Room dimensions

Floor 2

Total: 1817 sqft

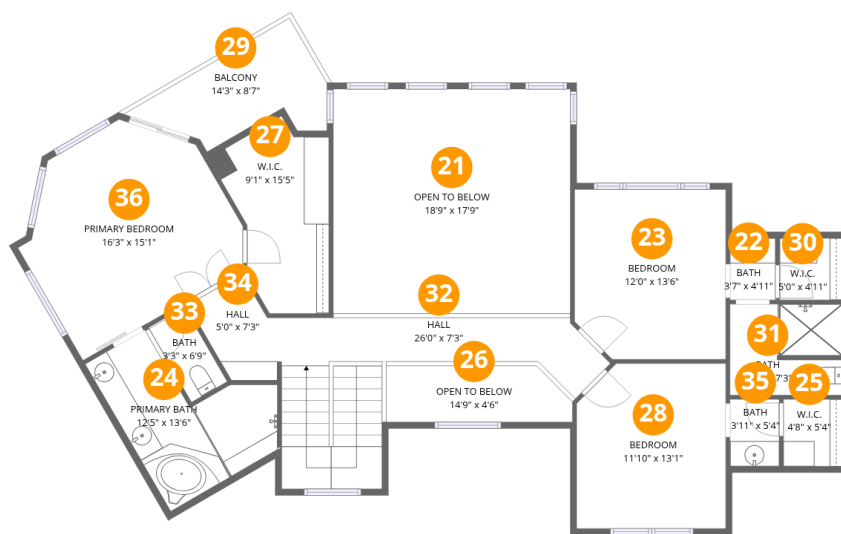
Excluded: 1261 sqft

#		Dimensions	sqft	Counted as living area
8	Office	19'11" x 21'3"	423 sq. ft	Yes
9	Hall	8'3" x 13'5"	112 sq. ft	Yes
10	Balcony	43'6" x 14'1"	612 sq. ft	No
11	Garage	36'1" x 22'8"	818 sq. ft	No
12	Laundry	9'2" x 10'4"	95 sq. ft	Yes
13	Kitchen	15'1" x 18'1"	272 sq. ft	Yes
14	Dining Area	12'3" x 26'10"	329 sq. ft	Yes
15	Hall	7'7" x 6'6"	49 sq. ft	Yes
16	Living Room	20'11" x 18'2"	379 sq. ft	Yes
17	Pantry	4'5" x 6'9"	30 sq. ft	Yes
18	Bath	5'1" x 7'4"	37 sq. ft	Yes

Home data report

7260 S Frog Hollow Ln, Evergreen, CO, US

#		Dimensions	sqft	Counted as living area
19	Hall	10'11" x 7'9"	84 sq. ft	Yes
20	Foyer	14'11" x 8'2"	122 sq. ft	Yes



Room dimensions

Floor 3

Total: 1189sqft Excluded: 478sqft

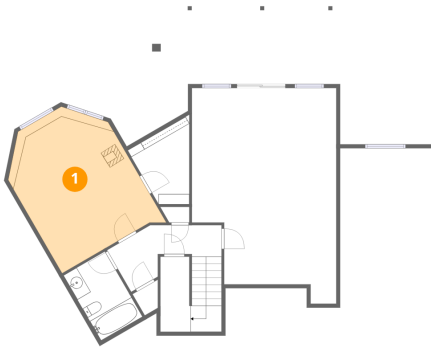
#		Dimensions	sqft	Counted as living area
21	Open To Below	18'9" x 17'9"	332 sq. ft	No
22	Bath	3'7" x 4'11"	18 sq. ft	Yes
23	Bedroom	12'0" x 13'6"	162 sq. ft	Yes
24	Primary Bath	12'5" x 13'6"	167 sq. ft	Yes
25	W.I.C.	4'8" x 5'4"	25 sq. ft	Yes
26	Open To Below	14'9" x 4'6"	66 sq. ft	No
27	W.I.C.	9'1" x 15'5"	139 sq. ft	Yes
28	Bedroom	11'10" x 13'1"	154 sq. ft	Yes
29	Balcony	14'3" x 8'7"	122 sq. ft	No
30	W.I.C.	5'0" x 4'11"	24 sq. ft	Yes
31	Bath	8'11" x 7'3"	64 sq. ft	Yes

Home data report

7260 S Frog Hollow Ln, Evergreen, CO, US

#		Dimensions	sqft	Counted as living area
32	Hall	26'0" x 7'3"	189 sq. ft	Yes
33	Bath	3'3" x 6'9"	22 sq. ft	Yes
34	Hall	5'0" x 7'3"	36 sq. ft	Yes
35	Bath	3'11" x 5'4"	21 sq. ft	Yes
36	Primary Bedroom	16'3" x 15'1"	245 sq. ft	Yes

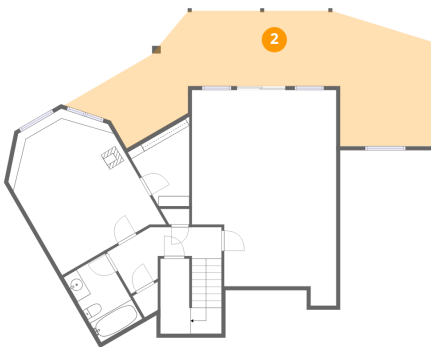
1 Floor 1 - Bedroom



Dimensions: 15'0" x 19'10"
Area: 298 sq. ft
Counted as living area: Yes

Heated: Yes
Finished: Yes
Enclosed: Yes
Contiguous: Yes
Permitted: Yes
Wet space: No
Addition: No
Conversion: No

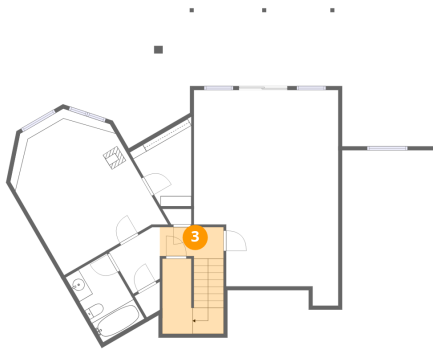
2 Floor 1 - Covered Patio



Dimensions: 47'10" x 17'7"
Area: 841 sq. ft
Counted as living area: No

Heated: No
Finished: No
Enclosed: No
Contiguous: Yes
Permitted: Yes
Wet space: No
Addition: No
Conversion: No

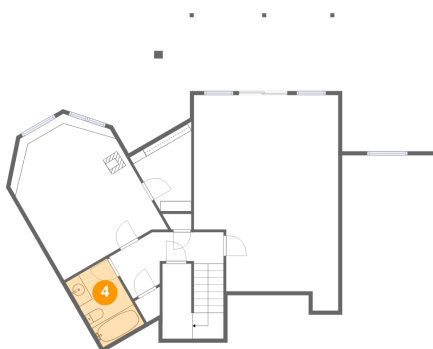
3 Floor 1 - Hall



Dimensions: 8'3" x 13'10"
Area: 115 sq. ft
Counted as living area: Yes

Heated: Yes
Finished: Yes
Enclosed: Yes
Contiguous: Yes
Permitted: Yes
Wet space: No
Addition: No
Conversion: No

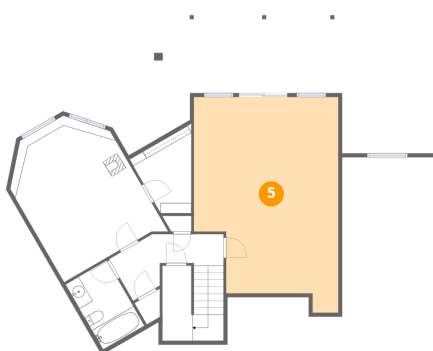
4 Floor 1 - Bath



Dimensions: 6'2" x 9'9"
Area: 60 sq. ft
Counted as living area: Yes

Heated: Yes
Finished: Yes
Enclosed: Yes
Contiguous: Yes
Permitted: Yes
Wet space: Yes
Addition: No
Conversion: No

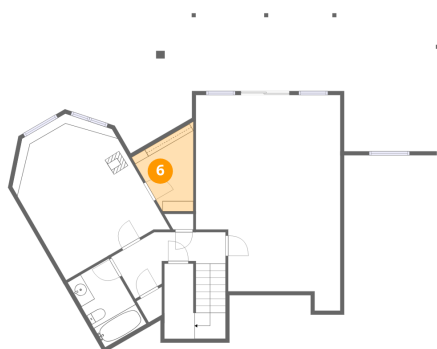
5 Floor 1 - Recreation Room



Dimensions: 18'10" x 28'1"
Area: 527 sq. ft
Counted as living area: Yes

Heated: Yes
Finished: Yes
Enclosed: Yes
Contiguous: Yes
Permitted: Yes
Wet space: No
Addition: No
Conversion: No

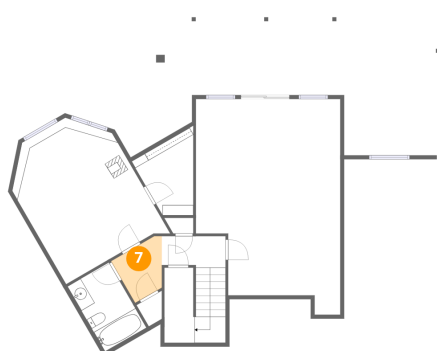
6 Floor 1 - W.I.C.



Dimensions: 8'0" x 11'7"
Area: 93 sq. ft
Counted as living area: Yes

Heated: Yes
Finished: Yes
Enclosed: Yes
Contiguous: Yes
Permitted: Yes
Wet space: No
Addition: No
Conversion: No

7 Floor 1 - Hall



Dimensions: 7'3" x 6'3"
Area: 45 sq. ft
Counted as living area: Yes

Heated: Yes
Finished: Yes
Enclosed: Yes
Contiguous: Yes
Permitted: Yes
Wet space: No
Addition: No
Conversion: No

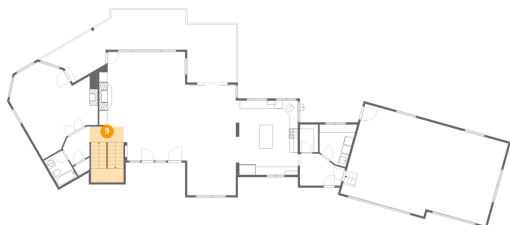
8 Floor 2 - Office



Dimensions: 19'11" x 21'3"
Area: 423 sq. ft
Counted as living area: Yes

Heated: Yes
Finished: Yes
Enclosed: Yes
Contiguous: Yes
Permitted: Yes
Wet space: No
Addition: No
Conversion: No

9 Floor 2 - Hall



Dimensions: 8'3" x 13'5"
Area: 112 sq. ft
Counted as living area: Yes

Heated: Yes
Finished: Yes
Enclosed: Yes
Contiguous: Yes
Permitted: Yes
Wet space: No
Addition: No
Conversion: No

10 Floor 2 - Balcony



Dimensions: 43'6" x 14'1"
Area: 612 sq. ft
Counted as living area: No

Heated: No
Finished: No
Enclosed: No
Contiguous: Yes
Permitted: Yes
Wet space: No
Addition: No
Conversion: No

11 Floor 2 - Garage



Dimensions: 36'1" x 22'8"
Area: 818 sq. ft
Counted as living area: No

Heated: No
Finished: No
Enclosed: Yes
Contiguous: Yes
Permitted: Yes
Wet space: No
Addition: No
Conversion: No

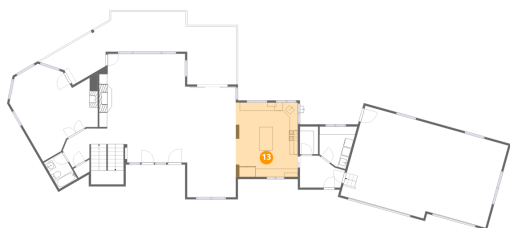
12 Floor 2 - Laundry



Dimensions: 9'2" x 10'4"
Area: 95 sq. ft
Counted as living area: Yes

Heated: Yes
Finished: Yes
Enclosed: Yes
Contiguous: Yes
Permitted: Yes
Wet space: No
Addition: No
Conversion: No

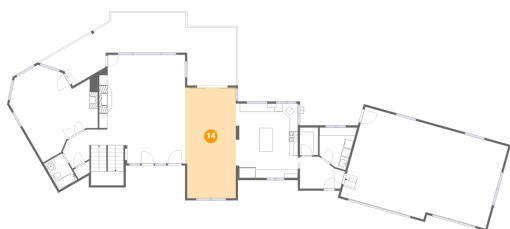
13 Floor 2 - Kitchen



Dimensions: 15'1" x 18'1"
Area: 272 sq. ft
Counted as living area: Yes

Heated: Yes
Finished: Yes
Enclosed: Yes
Contiguous: Yes
Permitted: Yes
Wet space: No
Addition: No
Conversion: No

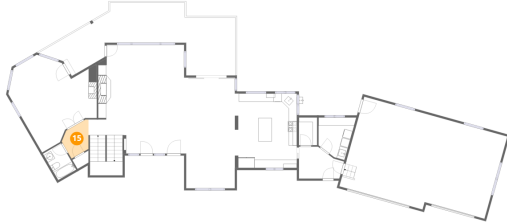
14 Floor 2 - Dining Area



Dimensions: 12'3" x 26'10"
Area: 329 sq. ft
Counted as living area: Yes

Heated: Yes
Finished: Yes
Enclosed: Yes
Contiguous: Yes
Permitted: Yes
Wet space: No
Addition: No
Conversion: No

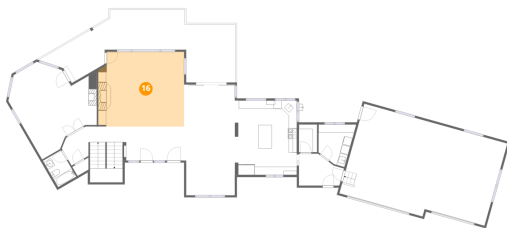
15 Floor 2 - Hall



Dimensions: 7'7" x 6'6"
Area: 49 sq. ft
Counted as living area: Yes

Heated: Yes
Finished: Yes
Enclosed: Yes
Contiguous: Yes
Permitted: Yes
Wet space: No
Addition: No
Conversion: No

16 Floor 2 - Living Room



Dimensions: 20'11" x 18'2"
Area: 379 sq. ft
Counted as living area: Yes

Heated: Yes
Finished: Yes
Enclosed: Yes
Contiguous: Yes
Permitted: Yes
Wet space: No
Addition: No
Conversion: No

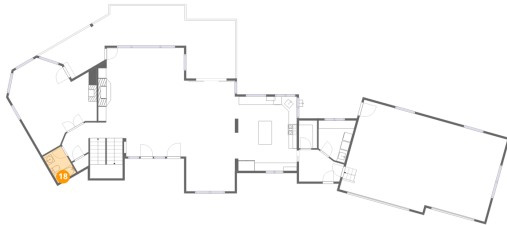
17 Floor 2 - Pantry



Dimensions: 4'5" x 6'9"
Area: 30 sq. ft
Counted as living area: Yes

Heated: Yes
Finished: Yes
Enclosed: Yes
Contiguous: Yes
Permitted: Yes
Wet space: No
Addition: No
Conversion: No

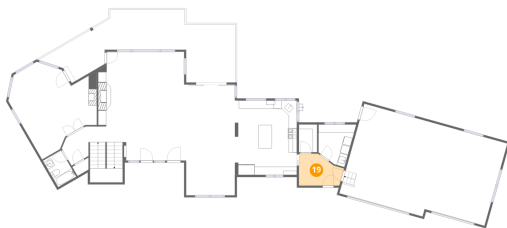
18 Floor 2 - Bath



Dimensions: 5'1" x 7'4"
Area: 37 sq. ft
Counted as living area: Yes

Heated: Yes
Finished: Yes
Enclosed: Yes
Contiguous: Yes
Permitted: Yes
Wet space: Yes
Addition: No
Conversion: No

19 Floor 2 - Hall



Dimensions: 10'11" x 7'9"
Area: 84 sq. ft
Counted as living area: Yes

Heated: Yes
Finished: Yes
Enclosed: Yes
Contiguous: Yes
Permitted: Yes
Wet space: No
Addition: No
Conversion: No

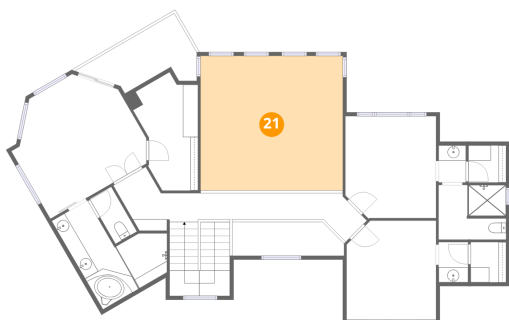
20 Floor 2 - Foyer



Dimensions: 14'11" x 8'2"
Area: 122 sq. ft
Counted as living area: Yes

Heated: Yes
Finished: Yes
Enclosed: Yes
Contiguous: Yes
Permitted: Yes
Wet space: No
Addition: No
Conversion: No

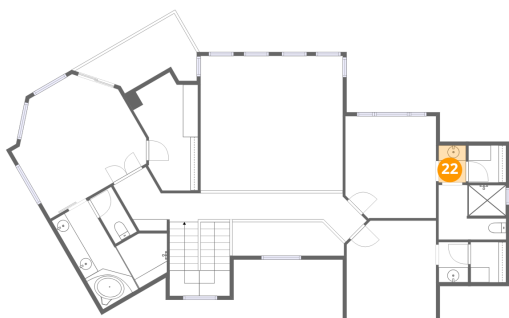
21 Floor 3 - Open To Below



Dimensions: 18'9" x 17'9"
Area: 332 sq. ft
Counted as living area: No

Heated: No
Finished: No
Enclosed: No
Contiguous: Yes
Permitted: No
Wet space: No
Addition: No
Conversion: No

22 Floor 3 - Bath



Dimensions: 3'7" x 4'11"
Area: 18 sq. ft
Counted as living area: Yes

Heated: Yes
Finished: Yes
Enclosed: Yes
Contiguous: Yes
Permitted: Yes
Wet space: Yes
Addition: No
Conversion: No

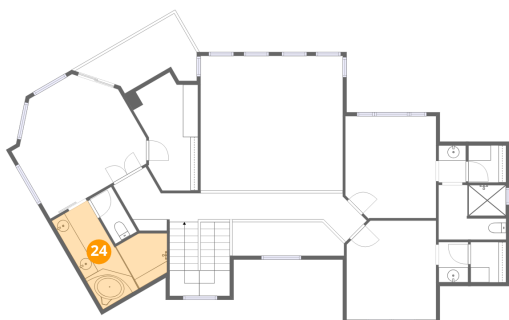
23 Floor 3 - Bedroom



Dimensions: 12'0" x 13'6"
Area: 162 sq. ft
Counted as living area: Yes

Heated: Yes
Finished: Yes
Enclosed: Yes
Contiguous: Yes
Permitted: Yes
Wet space: No
Addition: No
Conversion: No

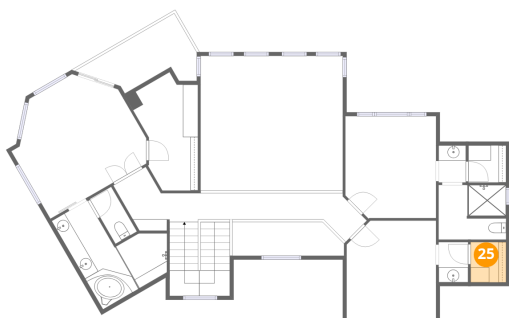
24 Floor 3 - Primary Bath



Dimensions: 12'5" x 13'6"
Area: 167 sq. ft
Counted as living area: Yes

Heated: Yes
Finished: Yes
Enclosed: Yes
Contiguous: Yes
Permitted: Yes
Wet space: Yes
Addition: No
Conversion: No

25 Floor 3 - W.I.C.



Dimensions: 4'8" x 5'4"
Area: 25 sq. ft
Counted as living area: Yes

Heated: Yes
Finished: Yes
Enclosed: Yes
Contiguous: Yes
Permitted: Yes
Wet space: No
Addition: No
Conversion: No

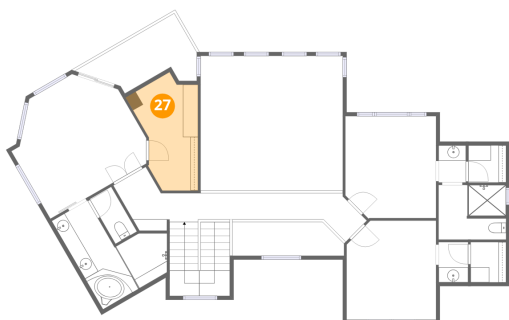
26 Floor 3 - Open To Below



Dimensions: 14'9" x 4'6"
Area: 66 sq. ft
Counted as living area: No

Heated: No
Finished: No
Enclosed: No
Contiguous: Yes
Permitted: No
Wet space: No
Addition: No
Conversion: No

27 Floor 3 - W.I.C.



Dimensions: 9'1" x 15'5"
Area: 139 sq. ft
Counted as living area: Yes

Heated: Yes
Finished: Yes
Enclosed: Yes
Contiguous: Yes
Permitted: Yes
Wet space: No
Addition: No
Conversion: No

28 Floor 3 - Bedroom



Dimensions: 11'10" x 13'1"
Area: 154 sq. ft
Counted as living area: Yes

Heated: Yes
Finished: Yes
Enclosed: Yes
Contiguous: Yes
Permitted: Yes
Wet space: No
Addition: No
Conversion: No

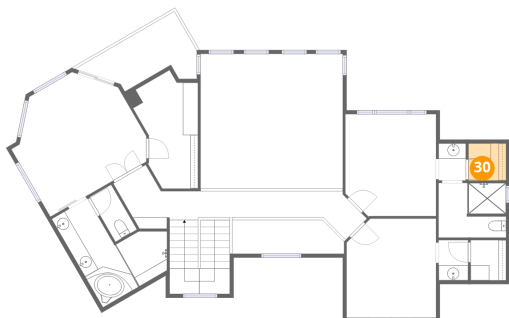
29 Floor 3 - Balcony



Dimensions: 14'3" x 8'7"
Area: 122 sq. ft
Counted as living area: No

Heated: No
Finished: No
Enclosed: No
Contiguous: Yes
Permitted: Yes
Wet space: No
Addition: No
Conversion: No

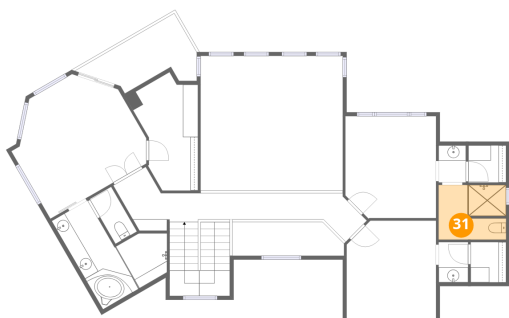
30 Floor 3 - W.I.C.



Dimensions: 5'0" x 4'11"
Area: 24 sq. ft
Counted as living area: Yes

Heated: Yes
Finished: Yes
Enclosed: Yes
Contiguous: Yes
Permitted: Yes
Wet space: No
Addition: No
Conversion: No

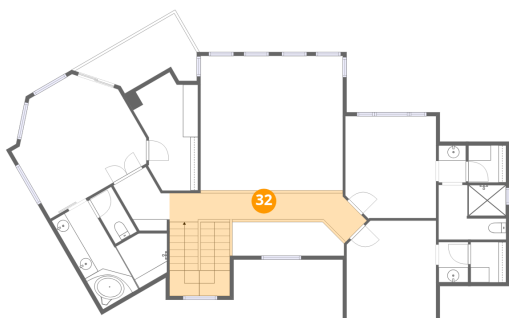
31 Floor 3 - Bath



Dimensions: 8'11" x 7'3"
Area: 64 sq. ft
Counted as living area: Yes

Heated: Yes
Finished: Yes
Enclosed: Yes
Contiguous: Yes
Permitted: Yes
Wet space: Yes
Addition: No
Conversion: No

32 Floor 3 - Hall



Dimensions: 26'0" x 7'3"
Area: 189 sq. ft
Counted as living area: Yes

Heated: Yes
Finished: Yes
Enclosed: Yes
Contiguous: Yes
Permitted: Yes
Wet space: No
Addition: No
Conversion: No

33 Floor 3 - Bath



Dimensions: 3'3" x 6'9"
Area: 22 sq. ft
Counted as living area: Yes

Heated: Yes
Finished: Yes
Enclosed: Yes
Contiguous: Yes
Permitted: Yes
Wet space: Yes
Addition: No
Conversion: No

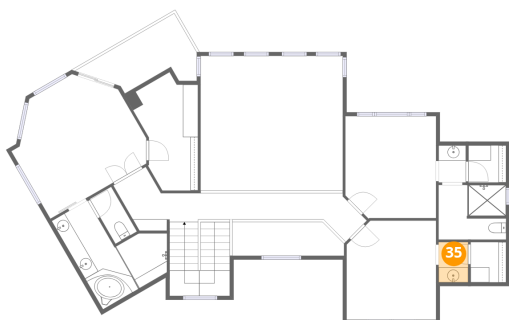
34 Floor 3 - Hall



Dimensions: 5'0" x 7'3"
Area: 36 sq. ft
Counted as living area: Yes

Heated: Yes
Finished: Yes
Enclosed: Yes
Contiguous: Yes
Permitted: Yes
Wet space: No
Addition: No
Conversion: No

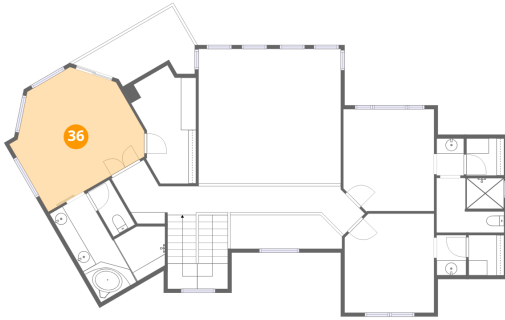
35 Floor 3 - Bath



Dimensions: 3'11" x 5'4"
Area: 21 sq. ft
Counted as living area: Yes

Heated: Yes
Finished: Yes
Enclosed: Yes
Contiguous: Yes
Permitted: Yes
Wet space: Yes
Addition: No
Conversion: No

36 Floor 3 - Primary Bedroom



Dimensions: 16'3" x 15'1"
Area: 245 sq. ft
Counted as living area: Yes

Heated: Yes
Finished: Yes
Enclosed: Yes
Contiguous: Yes
Permitted: Yes
Wet space: No
Addition: No
Conversion: No