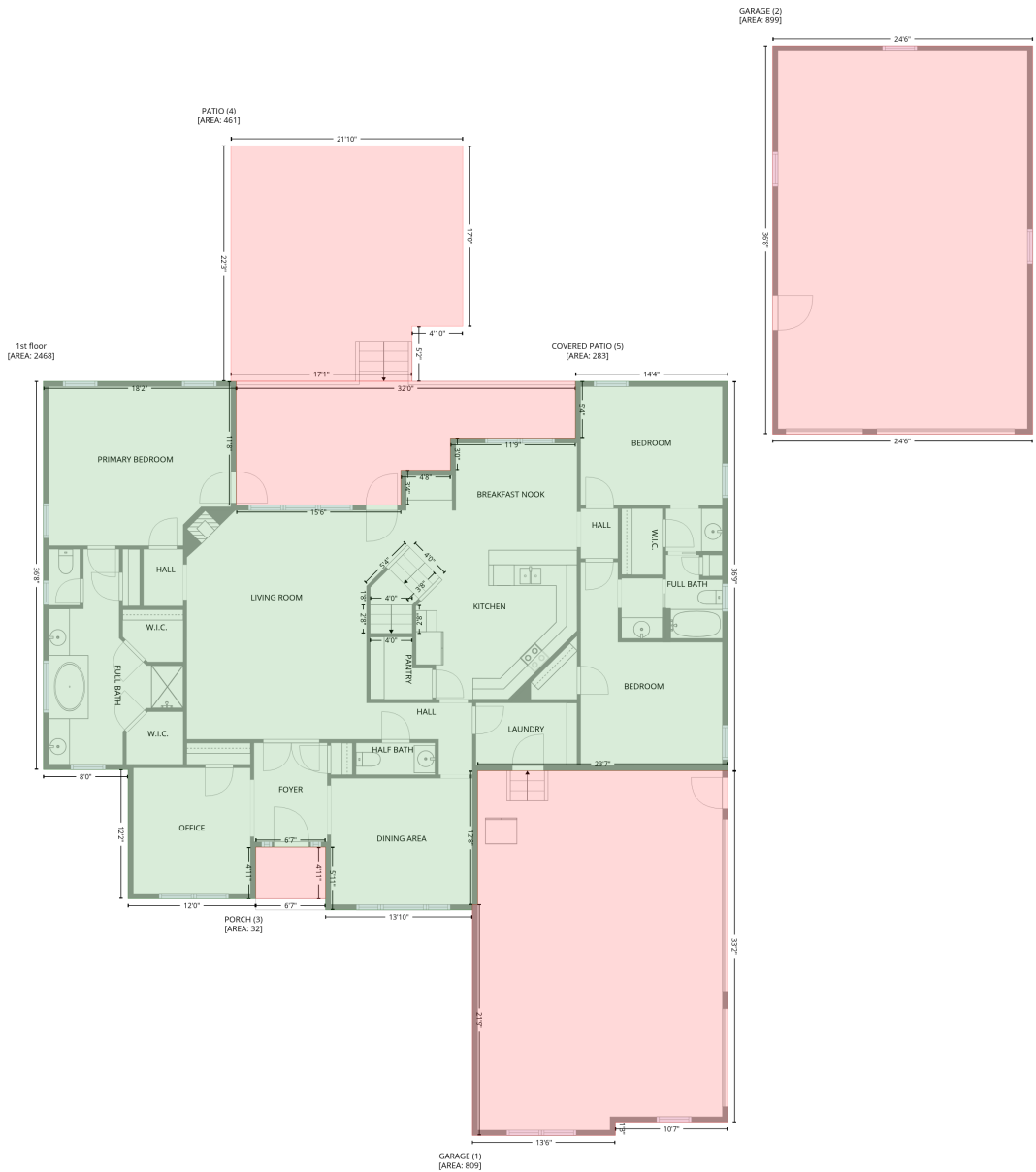


115 Holbrook Drive, Huntsville, Madison County, Alabama, United States, 35806

Gross Living Area: 3069 sq. ft

Level 1



Space	Area (sq. ft)	Calculation
1st floor (Living area)	2468	Coordinate Polygon Area Algorithm using inches $-((217.3 + 217.3) * (375.1 - 515.3) + (217.3 + 403.7) * (515.3 - 515.3) + (403.7 + 403.7) * (515.3 - 475.7) + (403.7 + 459.7) * (475.7 - 475.7) + (459.7 + 459.7) * (475.7 - 439.3) + (459.7 + 601.1) * (439.3 - 439.3) + (601.1 + 601.1) * (439.3 - 375.1) + (601.1 + 773.4) * (375.1 - 375.1) + (773.4 + 773.4) * (375.1 - 816.1) + (773.4 + 490.6) * (816.1 - 816.1) + (490.6 + 490.6) * (816.1 - 967.6) + (490.6 + 484.6) * (967.6 - 967.6) + (484.6 + 484.6) * (967.6 - 973.6) + (484.6 + 318.4) * (973.6 - 973.6) + (318.4 + 318.4) * (973.6 - 902.4) + (318.4 + 239.4) * (902.4 - 902.4) + (239.4 + 239.4) * (902.4 - 961.1) + (239.4 + 95) * (961.1 - 961.1) + (95 + 95) * (961.1 - 814.8) + (95 + -0.9) * (814.8 - 814.8) + (-0.9 + -0.9) * (814.8 - 375.1) + (-0.9 + 217.3) * (375.1 - 375.1)) * 0.5 * 0.00694$

115 Holbrook Drive, Huntsville, Madison County, Alabama, United States, 35806

Gross Living Area: 3069 sq. ft

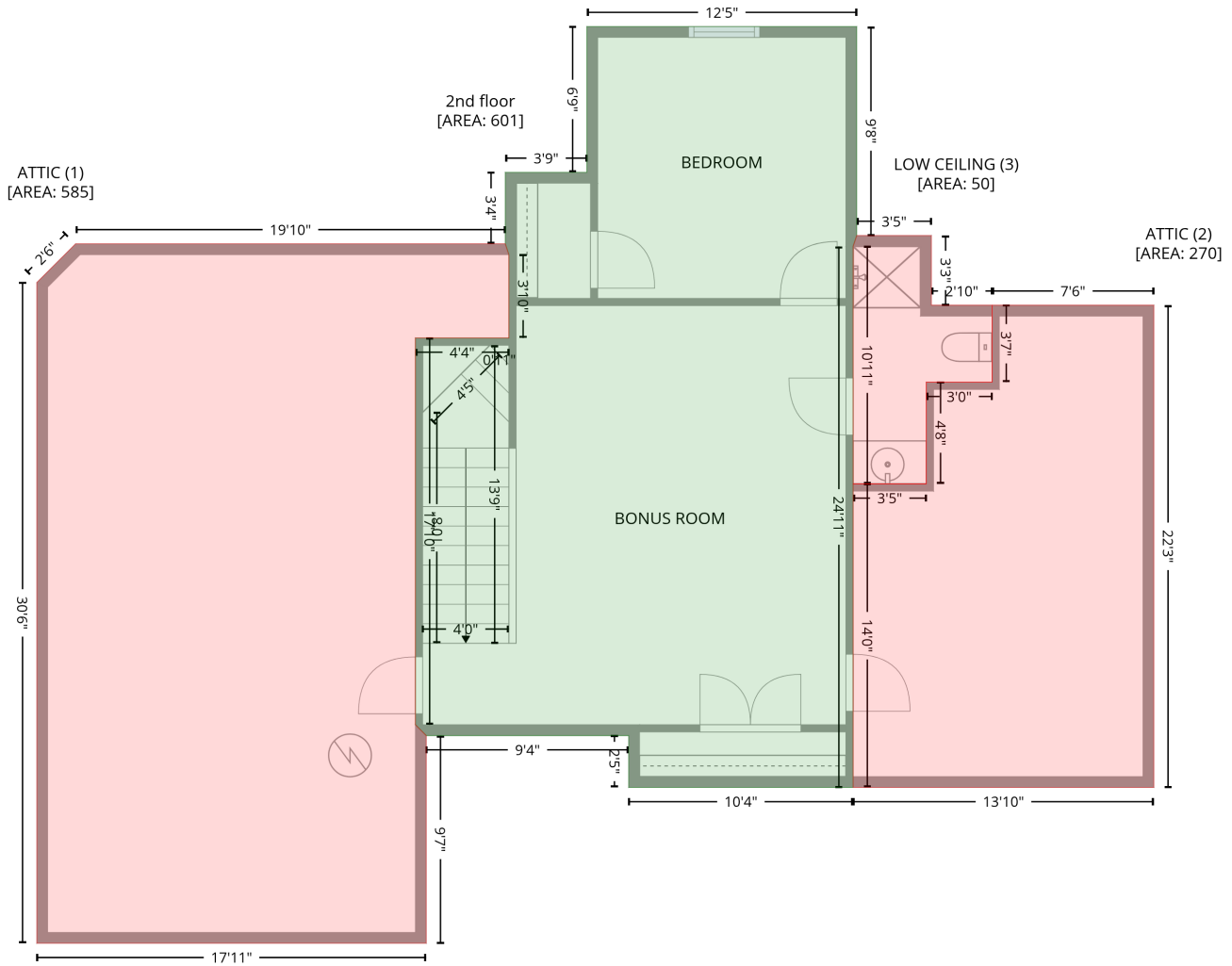
Level 1

Space	Area (sq. ft)	Calculation <small>Coordinate Polygon Area Algorithm using inches</small>
GARAGE (Non-living area)	809	$-\left((773.4 + 773.4) * (816.1 - 1213.7) + (773.4 + 646.4) * (1213.7 - 1213.7) + (646.4 + 646.4) * (1213.7 - 1229) + (646.4 + 484.6) * (1229 - 1229) + (484.6 + 484.6) * (1229 - 967.6) + (484.6 + 490.6) * (967.6 - 967.6) + (490.6 + 490.6) * (967.6 - 816.1) + (490.6 + 773.4) * (816.1 - 816.1)\right) * 0.5 * 0.00694$
GARAGE (Non-living area)	899	$-\left((1118.5 + 1118.5) * (-4.8 - 435) + (1118.5 + 824.3) * (435 - 435) + (824.3 + 824.3) * (435 - -4.8) + (824.3 + 1118.5) * (-4.8 - -4.8)\right) * 0.5 * 0.00694$
PORCH (Non-living area)	32	$-\left((318.4 + 318.4) * (902.4 - 961.1) + (318.4 + 239.4) * (961.1 - 961.1) + (239.4 + 239.4) * (961.1 - 902.4) + (239.4 + 318.4) * (902.4 - 902.4)\right) * 0.5 * 0.00694$
PATIO (Non-living area)	461	$-\left((473.8 + 473.8) * (108.5 - 312.8) + (473.8 + 416.2) * (312.8 - 312.8) + (416.2 + 416.2) * (312.8 - 375.1) + (416.2 + 211.3) * (375.1 - 375.1) + (211.3 + 211.3) * (375.1 - 108.5) + (211.3 + 473.8) * (108.5 - 108.5)\right) * 0.5 * 0.00694$
COVERED PATIO (Non-living area)	283	$-\left((601.1 + 601.1) * (375.1 - 439.3) + (601.1 + 459.7) * (439.3 - 439.3) + (459.7 + 459.7) * (439.3 - 475.7) + (459.7 + 403.7) * (475.7 - 475.7) + (403.7 + 403.7) * (475.7 - 515.3) + (403.7 + 217.3) * (515.3 - 515.3) + (217.3 + 217.3) * (515.3 - 375.1) + (217.3 + 601.1) * (375.1 - 375.1)\right) * 0.5 * 0.00694$

115 Holbrook Drive, Huntsville, Madison County, Alabama, United States, 35806

Gross Living Area: 3069 sq. ft

Level 2



Space	Area (sq. ft)	Calculation
2nd floor (Living area)	601	Coordinate Polygon Area Algorithm using inches $-(609.1 + 609.1) * (395 - 510.6) + (609.1 + 607.1) * (510.6 - 516.6) + (607.1 + 607.1) * (516.6 - 816.1) + (607.1 + 482.9) * (816.1 - 816.1) + (482.9 + 482.9) * (816.1 - 787.4) + (482.9 + 370.9) * (787.4 - 787.4) + (370.9 + 364.9) * (787.4 - 781.4) + (364.9 + 364.9) * (781.4 - 567.4) + (364.9 + 416.6) * (567.4 - 567.4) + (416.6 + 416.6) * (567.4 - 521.3) + (416.6 + 414.6) * (521.3 - 515.3) + (414.6 + 414.6) * (515.3 - 475.7) + (414.6 + 459.7) * (475.7 - 475.7) + (459.7 + 459.7) * (475.7 - 395) + (459.7 + 609.1) * (395 - 395) * 0.5 * 0.00694$
ATTIC (Non-living area)	585	$-(414.6 + 416.6) * (515.3 - 521.3) + (416.6 + 416.6) * (521.3 - 567.4) + (416.6 + 364.9) * (567.4 - 567.4) + (364.9 + 364.9) * (567.4 - 781.4) + (364.9 + 370.9) * (781.4 - 787.4) + (370.9 + 370.9) * (787.4 - 902.4) + (370.9 + 155.4) * (902.4 - 902.4) + (155.4 + 155.4) * (902.4 - 536.7) + (155.4 + 176.8) * (536.7 - 515.3) + (176.8 + 414.6) * (515.3 - 515.3) * 0.5 * 0.00694$
ATTIC (Non-living area)	270	$-(773.4 + 773.4) * (549.2 - 816.1) + (773.4 + 607.1) * (816.1 - 816.1) + (607.1 + 607.1) * (816.1 - 648.1) + (607.1 + 647.6) * (648.1 - 648.1) + (647.6 + 647.6) * (648.1 - 591.8) + (647.6 + 683.9) * (591.8 - 591.8) + (683.9 + 683.9) * (591.8 - 549.2) + (683.9 + 773.4) * (549.2 - 549.2) * 0.5 * 0.00694$

115 Holbrook Drive, Huntsville, Madison County, Alabama, United States, 35806

Gross Living Area: 3069 sq. ft

Level 2

Space	Area (sq. ft)	Calculation <small>Coordinate Polygon Area Algorithm using inches</small>
LOW CEILING (Non-living area)	50	$-\left((650.4 + 650.4) * (510.6 - 549.2) + (650.4 + 683.9) * (549.2 - 549.2) + (683.9 + 683.9) * (549.2 - 591.8) + (683.9 + 647.6) * (591.8 - 591.8) + (647.6 + 647.6) * (591.8 - 648.1) + (647.6 + 607.1) * (648.1 - 648.1) + (607.1 + 607.1) * (648.1 - 516.6) + (607.1 + 609.1) * (516.6 - 510.6) + (609.1 + 650.4) * (510.6 - 510.6)\right) * 0.5 * 0.00694$