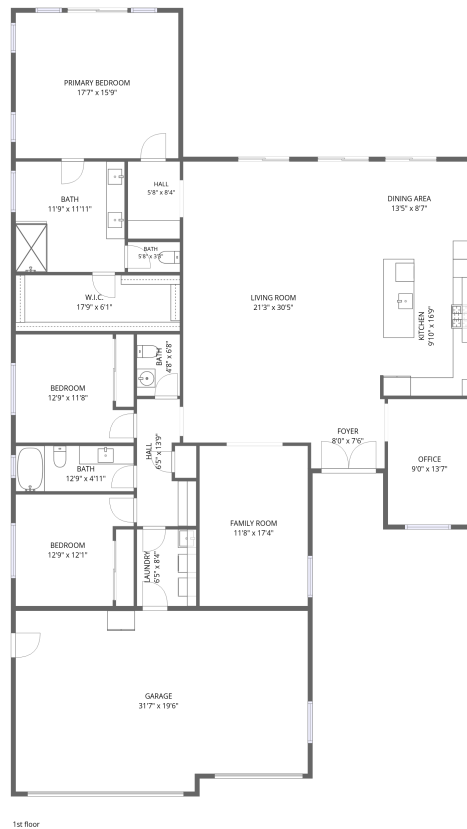


Home data report

5813 Lady Bells Dr, Santa Maria, CA, US



Total Area: 2438 sq. ft

1st Floor: 2438 sq. ft

Excluded: Garage 593 sq. ft, Walls: 156 sq. ft

Property summary

 **1** Floors

 **3** Bedrooms

 **2** Bathrooms

Home data report

5813 Lady Bells Dr, Santa Maria, CA, US

 **1**
Half baths

 **1**
Garages



Room dimensions

Floor 1

Total: 2438 sqft Excluded: 593 sqft

#		Dimensions	sqft	Counted as living area
1	Office	9'0" x 13'7"	122 sq. ft	Yes
2	Bath	12'9" x 4'11"	63 sq. ft	Yes
3	Family Room	11'8" x 17'4"	203 sq. ft	Yes
4	Dining Area	13'5" x 8'7"	115 sq. ft	Yes
5	Garage	31'7" x 19'6"	593 sq. ft	No
6	Hall	6'5" x 13'9"	69 sq. ft	Yes
7	Foyer	8'0" x 7'6"	60 sq. ft	Yes
8	Primary Bedroom	17'7" x 15'9"	277 sq. ft	Yes
9	Living Room	21'3" x 30'5"	581 sq. ft	Yes
10	Bath	11'9" x 11'11"	141 sq. ft	Yes
11	Hall	5'8" x 8'4"	47 sq. ft	Yes

Home data report

5813 Lady Bells Dr,Santa Maria,CA,US

#		Dimensions	sqft	Counted as living area
12	Bath	4'8" x 6'8"	31 sq. ft	Yes
13	Bedroom	12'9" x 11'8"	131 sq. ft	Yes
14	Bedroom	12'9" x 12'1"	134 sq. ft	Yes
15	W.I.C.	17'9" x 6'1"	108 sq. ft	Yes
16	Bath	5'8" x 3'3"	18 sq. ft	Yes
17	Kitchen	9'10" x 16'9"	164 sq. ft	Yes
18	Laundry	6'5" x 8'4"	53 sq. ft	Yes

1 Floor 1 - Office



Dimensions: 9'0" x 13'7"
Area: 122 sq. ft
Counted as living area: Yes

Heated: Yes
Finished: Yes
Enclosed: Yes
Contiguous: Yes
Permitted: Yes
Wet space: No
Addition: No
Conversion: No

2 Floor 1 - Bath



Dimensions: 12'9" x 4'11"
Area: 63 sq. ft
Counted as living area: Yes

Heated: Yes
Finished: Yes
Enclosed: Yes
Contiguous: Yes
Permitted: Yes
Wet space: Yes
Addition: No
Conversion: No

3 Floor 1 - Family Room



Dimensions: 11'8" x 17'4"
Area: 203 sq. ft
Counted as living area: Yes

Heated: Yes
Finished: Yes
Enclosed: Yes
Contiguous: Yes
Permitted: Yes
Wet space: No
Addition: No
Conversion: No

4 Floor 1 - Dining Area



Dimensions: 13'5" x 8'7"
Area: 115 sq. ft
Counted as living area: Yes

Heated: Yes
Finished: Yes
Enclosed: Yes
Contiguous: Yes
Permitted: Yes
Wet space: No
Addition: No
Conversion: No

5 Floor 1 - Garage



Dimensions: 31'7" x 19'6"
Area: 593 sq. ft
Counted as living area: No

Heated: No
Finished: No
Enclosed: Yes
Contiguous: Yes
Permitted: Yes
Wet space: No
Addition: No
Conversion: No

6 Floor 1 - Hall



Dimensions: 6'5" x 13'9"
Area: 69 sq. ft
Counted as living area: Yes

Heated: Yes
Finished: Yes
Enclosed: Yes
Contiguous: Yes
Permitted: Yes
Wet space: No
Addition: No
Conversion: No

7 Floor 1 - Foyer



Dimensions: 8'0" x 7'6"
Area: 60 sq. ft
Counted as living area: Yes

Heated: Yes
Finished: Yes
Enclosed: Yes
Contiguous: Yes
Permitted: Yes
Wet space: No
Addition: No
Conversion: No

8 Floor 1 - Primary Bedroom



Dimensions: 17'7" x 15'9"
Area: 277 sq. ft
Counted as living area: Yes

Heated: Yes
Finished: Yes
Enclosed: Yes
Contiguous: Yes
Permitted: Yes
Wet space: No
Addition: No
Conversion: No

9 Floor 1 - Living Room



Dimensions: 21'3" x 30'5"
Area: 581 sq. ft
Counted as living area: Yes

Heated: Yes
Finished: Yes
Enclosed: Yes
Contiguous: Yes
Permitted: Yes
Wet space: No
Addition: No
Conversion: No

10 Floor 1 - Bath



Dimensions: 11'9" x 11'11"
Area: 141 sq. ft
Counted as living area: Yes

Heated: Yes
Finished: Yes
Enclosed: Yes
Contiguous: Yes
Permitted: Yes
Wet space: Yes
Addition: No
Conversion: No

11 Floor 1 - Hall



Dimensions: 5'8" x 8'4"
Area: 47 sq. ft
Counted as living area: Yes

Heated: Yes
Finished: Yes
Enclosed: Yes
Contiguous: Yes
Permitted: Yes
Wet space: No
Addition: No
Conversion: No

12 Floor 1 - Bath



Dimensions: 4'8" x 6'8"
Area: 31 sq. ft
Counted as living area: Yes

Heated: Yes
Finished: Yes
Enclosed: Yes
Contiguous: Yes
Permitted: Yes
Wet space: Yes
Addition: No
Conversion: No

13 Floor 1 - Bedroom



Dimensions: 12'9" x 11'8"
Area: 131 sq. ft
Counted as living area: Yes

Heated: Yes
Finished: Yes
Enclosed: Yes
Contiguous: Yes
Permitted: Yes
Wet space: No
Addition: No
Conversion: No

14 Floor 1 - Bedroom



Dimensions: 12'9" x 12'1"
Area: 134 sq. ft
Counted as living area: Yes

Heated: Yes
Finished: Yes
Enclosed: Yes
Contiguous: Yes
Permitted: Yes
Wet space: No
Addition: No
Conversion: No

15 Floor 1 - W.I.C.



Dimensions: 17'9" x 6'1"
Area: 108 sq. ft
Counted as living area: Yes

Heated: Yes
Finished: Yes
Enclosed: Yes
Contiguous: Yes
Permitted: Yes
Wet space: No
Addition: No
Conversion: No

16 Floor 1 - Bath



Dimensions: 5'8" x 3'3"
Area: 18 sq. ft
Counted as living area: Yes

Heated: Yes
Finished: Yes
Enclosed: Yes
Contiguous: Yes
Permitted: Yes
Wet space: Yes
Addition: No
Conversion: No

17 Floor 1 - Kitchen



Dimensions: 9'10" x 16'9"
Area: 164 sq. ft
Counted as living area: Yes

Heated: Yes
Finished: Yes
Enclosed: Yes
Contiguous: Yes
Permitted: Yes
Wet space: No
Addition: No
Conversion: No

18 Floor 1 - Laundry



Dimensions: 6'5" x 8'4"
Area: 53 sq. ft
Counted as living area: Yes

Heated: Yes
Finished: Yes
Enclosed: Yes
Contiguous: Yes
Permitted: Yes
Wet space: No
Addition: No
Conversion: No