

Home data report

2520 Towne View Court, Flower Mound, Denton County, Texas,
United States, 75028



Total Area: 4205 sq. ft
1st Floor: 2528 sq. ft, 2nd Floor: 1677 sq. ft
Excluded: Garage 658 sq. ft, Open to below 165 sq. ft, Walls: 297 sq. ft

Property summary

 **2** Floors

 **5** Bedrooms

 **4** Bathrooms

 **2** Garages

Home data report

2520 Towne View Court, Flower Mound, Denton County, Texas,
United States, 75028



Room dimensions

Floor 1

Total:2528sqft Excluded: 658sqft

#		Dimensions	sqft	Counted as living area
1	Garage	15'2" x 20'10"	266 sq. ft	No
2	Garage	27'9" x 26'4"	392 sq. ft	No
3	Breakfast Nook	9'9" x 11'9"	146 sq. ft	Yes
4	Pantry	4'1" x 4'4"	16 sq. ft	Yes
5	Primary Bedroom	19'4" x 22'11"	314 sq. ft	Yes
6	Bath	9'11" x 10'2"	96 sq. ft	Yes
7	Family Room	22'6" x 18'2"	403 sq. ft	Yes
8	Hall	9'4" x 5'3"	36 sq. ft	Yes
9	Foyer	7'10" x 26'5"	223 sq. ft	Yes
10	Dining Area	14'11" x 11'11"	172 sq. ft	Yes
11	Bedroom	11'9" x 11'6"	135 sq. ft	Yes

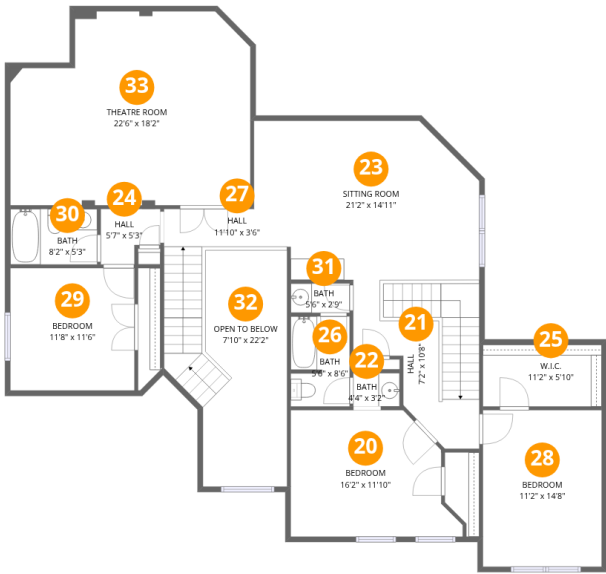
Home data report

**2520 Towne View Court, Flower Mound, Denton County, Texas,
United States, 75028**

#		Dimensions	sqft	Counted as living area
12	Laundry	9'7" x 8'0"	77 sq. ft	Yes
13	Hall	5'7" x 7'2"	40 sq. ft	Yes
14	Bath	8'4" x 5'3"	43 sq. ft	Yes
15	Kitchen	19'0" x 26'0"	285 sq. ft	Yes
16	Bath	4'7" x 5'11"	19 sq. ft	Yes
17	W.I.C.	8'0" x 18'6"	104 sq. ft	Yes
18	Living Room	17'9" x 15'4"	240 sq. ft	Yes
19	Entry	5'0" x 6'3"	32 sq. ft	Yes

Home data report

2520 Towne View Court, Flower Mound, Denton County, Texas,
United States, 75028



Room dimensions

Floor 2 Total:1677sqft Excluded: 165sqft

#		Dimensions	sqft	Counted as living area
20	Bedroom	16'2" x 11'10"	165 sq. ft	Yes
21	Hall	7'2" x 10'8"	138 sq. ft	Yes
22	Bath	4'4" x 3'2"	14 sq. ft	Yes
23	Sitting Room	21'2" x 14'11"	277 sq. ft	Yes
24	Hall	5'7" x 5'3"	25 sq. ft	Yes
25	W.I.C.	11'2" x 5'10"	65 sq. ft	Yes
26	Bath	5'6" x 8'6"	46 sq. ft	Yes
27	Hall	11'10" x 3'6"	103 sq. ft	Yes
28	Bedroom	11'2" x 14'8"	164 sq. ft	Yes
29	Bedroom	11'8" x 11'6"	134 sq. ft	Yes
30	Bath	8'2" x 5'3"	42 sq. ft	Yes

Home data report

2520 Towne View Court, Flower Mound, Denton County, Texas,
United States, 75028

#		Dimensions	sqft	Counted as living area
31	Bath	5'6" x 2'9"	15 sq. ft	Yes
32	Open To Below	7'10" x 22'2"	165 sq. ft	No
33	Theatre Room	22'6" x 18'2"	372 sq. ft	Yes

1 Floor 1 - Garage



Dimensions: 15'2" x 20'10"
Area: 266 sq. ft
Counted as living area: No

Heated: No
Finished: No
Enclosed: Yes
Contiguous: Yes
Permitted: Yes
Wet space: No
Addition: No
Conversion: No

2 Floor 1 - Garage



Dimensions: 27'9" x 26'4"
Area: 392 sq. ft
Counted as living area: No

Heated: No
Finished: No
Enclosed: Yes
Contiguous: Yes
Permitted: Yes
Wet space: No
Addition: No
Conversion: No

3 Floor 1 - Breakfast Nook



Dimensions: 9'9" x 11'9"
Area: 146 sq. ft
Counted as living area: Yes

Heated: Yes
Finished: Yes
Enclosed: Yes
Contiguous: Yes
Permitted: Yes
Wet space: No
Addition: No
Conversion: No

4 Floor 1 - Pantry



Dimensions: 4'1" x 4'4"
Area: 16 sq. ft
Counted as living area: Yes

Heated: Yes
Finished: Yes
Enclosed: Yes
Contiguous: Yes
Permitted: Yes
Wet space: No
Addition: No
Conversion: No

5 Floor 1 - Primary Bedroom



Dimensions: 19'4" x 22'11"
Area: 314 sq. ft
Counted as living area: Yes

Heated: Yes
Finished: Yes
Enclosed: Yes
Contiguous: Yes
Permitted: Yes
Wet space: No
Addition: No
Conversion: No

2520 Towne View Court, Flower Mound, Denton County, Texas,
United States, 75028

6 Floor 1 - Bath



Dimensions: 9'11" x 10'2"
Area: 96 sq. ft
Counted as living area: Yes

Heated: Yes
Finished: Yes
Enclosed: Yes
Contiguous: Yes
Permitted: Yes
Wet space: Yes
Addition: No
Conversion: No

7 Floor 1 - Family Room



Dimensions: 22'6" x 18'2"
Area: 403 sq. ft
Counted as living area: Yes

Heated: Yes
Finished: Yes
Enclosed: Yes
Contiguous: Yes
Permitted: Yes
Wet space: No
Addition: No
Conversion: No

8 Floor 1 - Hall

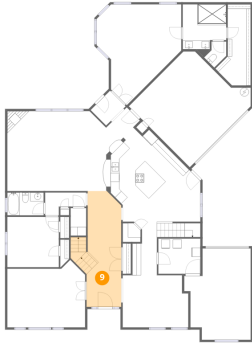


Dimensions: 9'4" x 5'3"
Area: 36 sq. ft
Counted as living area: Yes

Heated: Yes
Finished: Yes
Enclosed: Yes
Contiguous: Yes
Permitted: Yes
Wet space: No
Addition: No
Conversion: No

2520 Towne View Court, Flower Mound, Denton County, Texas,
United States, 75028

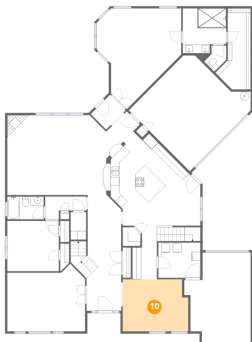
9 Floor 1 - Foyer



Dimensions: 7'10" x 26'5"
Area: 223 sq. ft
Counted as living area: Yes

Heated: Yes
Finished: Yes
Enclosed: Yes
Contiguous: Yes
Permitted: Yes
Wet space: No
Addition: No
Conversion: No

10 Floor 1 - Dining Area



Dimensions: 14'11" x 11'11"
Area: 172 sq. ft
Counted as living area: Yes

Heated: Yes
Finished: Yes
Enclosed: Yes
Contiguous: Yes
Permitted: Yes
Wet space: No
Addition: No
Conversion: No

11 Floor 1 - Bedroom



Dimensions: 11'9" x 11'6"
Area: 135 sq. ft
Counted as living area: Yes

Heated: Yes
Finished: Yes
Enclosed: Yes
Contiguous: Yes
Permitted: Yes
Wet space: No
Addition: No
Conversion: No

2520 Towne View Court, Flower Mound, Denton County, Texas,
United States, 75028

12 Floor 1 - Laundry



Dimensions: 9'7" x 8'0"
Area: 77 sq. ft
Counted as living area: Yes

Heated: Yes
Finished: Yes
Enclosed: Yes
Contiguous: Yes
Permitted: Yes
Wet space: No
Addition: No
Conversion: No

13 Floor 1 - Hall



Dimensions: 5'7" x 7'2"
Area: 40 sq. ft
Counted as living area: Yes

Heated: Yes
Finished: Yes
Enclosed: Yes
Contiguous: Yes
Permitted: Yes
Wet space: No
Addition: No
Conversion: No

14 Floor 1 - Bath

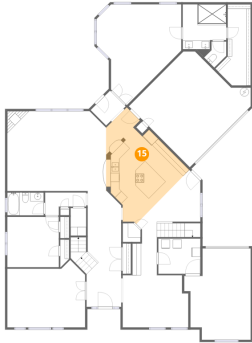


Dimensions: 8'4" x 5'3"
Area: 43 sq. ft
Counted as living area: Yes

Heated: Yes
Finished: Yes
Enclosed: Yes
Contiguous: Yes
Permitted: Yes
Wet space: Yes
Addition: No
Conversion: No

2520 Towne View Court, Flower Mound, Denton County, Texas,
United States, 75028

15 Floor 1 - Kitchen



Dimensions: 19'0" x 26'0"
Area: 285 sq. ft
Counted as living area: Yes

Heated: Yes
Finished: Yes
Enclosed: Yes
Contiguous: Yes
Permitted: Yes
Wet space: No
Addition: No
Conversion: No

16 Floor 1 - Bath



Dimensions: 4'7" x 5'11"
Area: 19 sq. ft
Counted as living area: Yes

Heated: Yes
Finished: Yes
Enclosed: Yes
Contiguous: Yes
Permitted: Yes
Wet space: Yes
Addition: No
Conversion: No

17 Floor 1 - W.I.C.



Dimensions: 8'0" x 18'6"
Area: 104 sq. ft
Counted as living area: Yes

Heated: Yes
Finished: Yes
Enclosed: Yes
Contiguous: Yes
Permitted: Yes
Wet space: No
Addition: No
Conversion: No

2520 Towne View Court, Flower Mound, Denton County, Texas,
United States, 75028

18 Floor 1 - Living Room



Dimensions: 17'9" x 15'4"
Area: 240 sq. ft
Counted as living area: Yes

Heated: Yes
Finished: Yes
Enclosed: Yes
Contiguous: Yes
Permitted: Yes
Wet space: No
Addition: No
Conversion: No

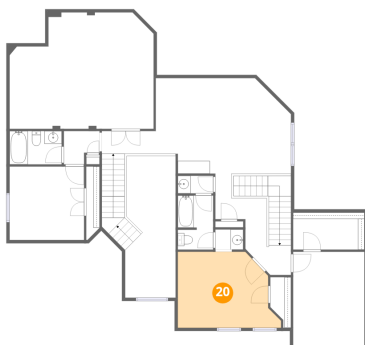
19 Floor 1 - Entry



Dimensions: 5'0" x 6'3"
Area: 32 sq. ft
Counted as living area: Yes

Heated: Yes
Finished: Yes
Enclosed: Yes
Contiguous: Yes
Permitted: Yes
Wet space: No
Addition: No
Conversion: No

20 Floor 2 - Bedroom

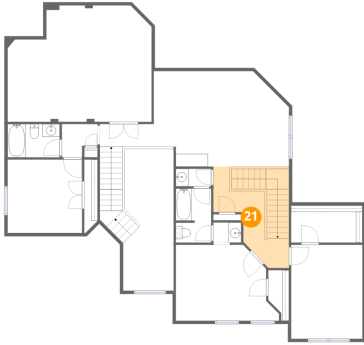


Dimensions: 16'2" x 11'10"
Area: 165 sq. ft
Counted as living area: Yes

Heated: Yes
Finished: Yes
Enclosed: Yes
Contiguous: Yes
Permitted: Yes
Wet space: No
Addition: No
Conversion: No

2520 Towne View Court, Flower Mound, Denton County, Texas,
United States, 75028

21 Floor 2 - Hall



Dimensions: 7'2" x 10'8"
Area: 138 sq. ft
Counted as living area: Yes

Heated: Yes
Finished: Yes
Enclosed: Yes
Contiguous: Yes
Permitted: Yes
Wet space: No
Addition: No
Conversion: No

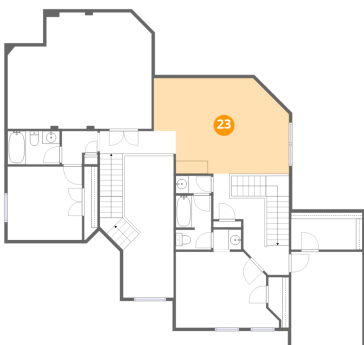
22 Floor 2 - Bath



Dimensions: 4'4" x 3'2"
Area: 14 sq. ft
Counted as living area: Yes

Heated: Yes
Finished: Yes
Enclosed: Yes
Contiguous: Yes
Permitted: Yes
Wet space: Yes
Addition: No
Conversion: No

23 Floor 2 - Sitting Room

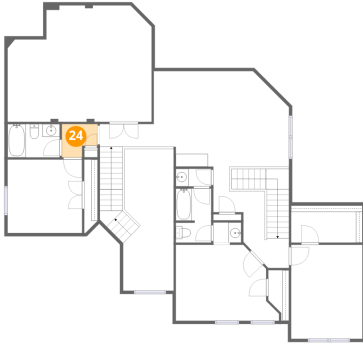


Dimensions: 21'2" x 14'11"
Area: 277 sq. ft
Counted as living area: Yes

Heated: Yes
Finished: Yes
Enclosed: Yes
Contiguous: Yes
Permitted: Yes
Wet space: No
Addition: No
Conversion: No

2520 Towne View Court, Flower Mound, Denton County, Texas,
United States, 75028

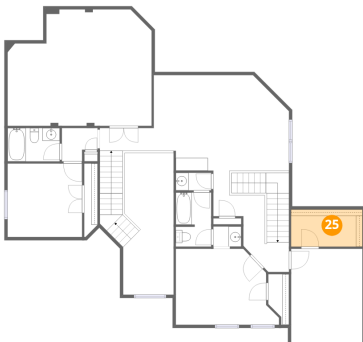
24 Floor 2 - Hall



Dimensions: 5'7" x 5'3"
Area: 25 sq. ft
Counted as living area: Yes

Heated: Yes
Finished: Yes
Enclosed: Yes
Contiguous: Yes
Permitted: Yes
Wet space: No
Addition: No
Conversion: No

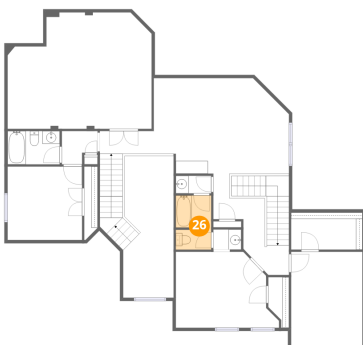
25 Floor 2 - W.I.C.



Dimensions: 11'2" x 5'10"
Area: 65 sq. ft
Counted as living area: Yes

Heated: Yes
Finished: Yes
Enclosed: Yes
Contiguous: Yes
Permitted: Yes
Wet space: No
Addition: No
Conversion: No

26 Floor 2 - Bath

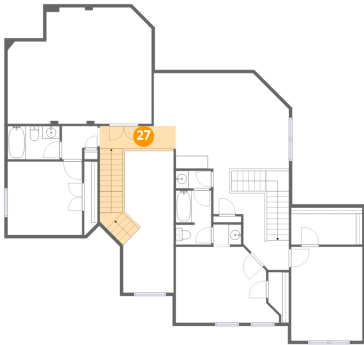


Dimensions: 5'6" x 8'6"
Area: 46 sq. ft
Counted as living area: Yes

Heated: Yes
Finished: Yes
Enclosed: Yes
Contiguous: Yes
Permitted: Yes
Wet space: Yes
Addition: No
Conversion: No

2520 Towne View Court, Flower Mound, Denton County, Texas,
United States, 75028

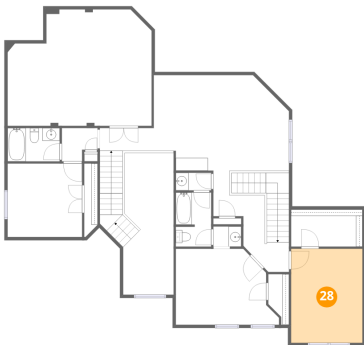
27 Floor 2 - Hall



Dimensions: 11'10" x 3'6"
Area: 103 sq. ft
Counted as living area: Yes

Heated: Yes
Finished: Yes
Enclosed: Yes
Contiguous: Yes
Permitted: Yes
Wet space: No
Addition: No
Conversion: No

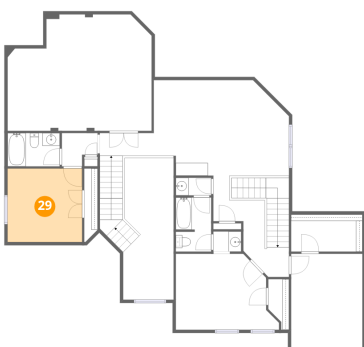
28 Floor 2 - Bedroom



Dimensions: 11'2" x 14'8"
Area: 164 sq. ft
Counted as living area: Yes

Heated: Yes
Finished: Yes
Enclosed: Yes
Contiguous: Yes
Permitted: Yes
Wet space: No
Addition: No
Conversion: No

29 Floor 2 - Bedroom



Dimensions: 11'8" x 11'6"
Area: 134 sq. ft
Counted as living area: Yes

Heated: Yes
Finished: Yes
Enclosed: Yes
Contiguous: Yes
Permitted: Yes
Wet space: No
Addition: No
Conversion: No

2520 Towne View Court, Flower Mound, Denton County, Texas,
United States, 75028

30 Floor 2 - Bath



Dimensions: 8'2" x 5'3"
Area: 42 sq. ft
Counted as living area: Yes

Heated: Yes
Finished: Yes
Enclosed: Yes
Contiguous: Yes
Permitted: Yes
Wet space: Yes
Addition: No
Conversion: No

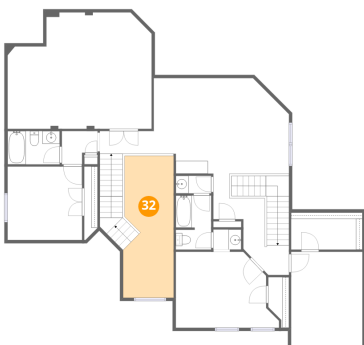
31 Floor 2 - Bath



Dimensions: 5'6" x 2'9"
Area: 15 sq. ft
Counted as living area: Yes

Heated: Yes
Finished: Yes
Enclosed: Yes
Contiguous: Yes
Permitted: Yes
Wet space: Yes
Addition: No
Conversion: No

32 Floor 2 - Open To Below

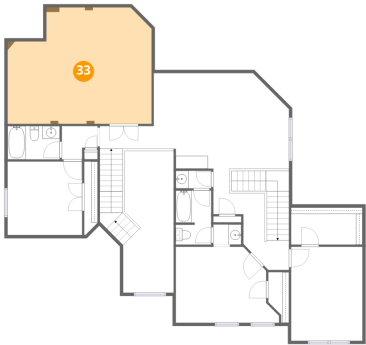


Dimensions: 7'10" x 22'2"
Area: 165 sq. ft
Counted as living area: No

Heated: No
Finished: No
Enclosed: No
Contiguous: Yes
Permitted: No
Wet space: No
Addition: No
Conversion: No

2520 Towne View Court, Flower Mound, Denton County, Texas,
United States, 75028

33 Floor 2 - Theatre Room



Dimensions: 22'6" x 18'2"
Area: 372 sq. ft
Counted as living area: Yes

Heated: Yes
Finished: Yes
Enclosed: Yes
Contiguous: Yes
Permitted: Yes
Wet space: No
Addition: No
Conversion: No