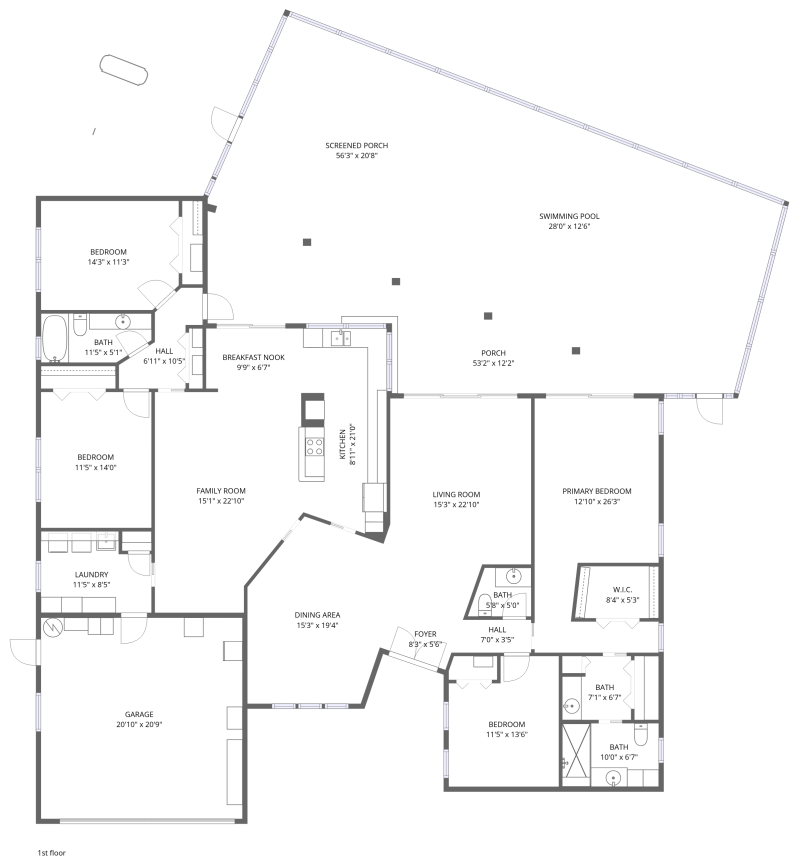


Home data report

7574 Cumberland Court, Bardmoor North, Bardmoor, Seminole,
Pinellas County, Florida, United States, 33777



Total Area: 2434 sq. ft

1st Floor: 2434 sq. ft

Excluded: Garage 432 sq. ft, Porch 395 sq. ft, Screened porch 806 sq. ft, Walls: 207 sq. ft

Property summary

 **1** Floors

 **4** Bedrooms

 **2** Bathrooms

Home data report

**7574 Cumberland Court, Bardmoor North, Bardmoor, Seminole,
Pinellas County, Florida, United States, 33777**



1
Half baths



1
Garages

Home data report

7574 Cumberland Court, Bardmoor North, Bardmoor, Seminole,
Pinellas County, Florida, United States, 33777



Room dimensions

Floor 1

Total:2434sqft

Excluded: 1633sqft

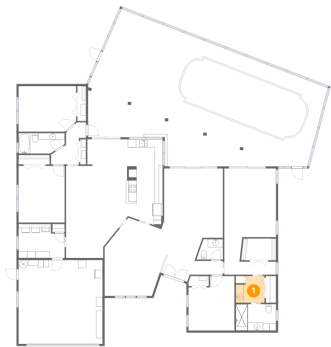
#		Dimensions	sqft	Counted as living area
1	Bath	7'1" x 6'7"	42 sq. ft	Yes
2	Swimming Pool	28'0" x 12'6"	350 sq. ft	No
3	Living Room	15'3" x 22'10"	294 sq. ft	Yes
4	Breakfast Nook	9'9" x 6'7"	64 sq. ft	Yes
5	Bedroom	14'3" x 11'3"	157 sq. ft	Yes
6	Bath	5'8" x 5'0"	29 sq. ft	Yes
7	Bedroom	11'5" x 14'0"	160 sq. ft	Yes
8	Primary Bedroom	12'10" x 26'3"	284 sq. ft	Yes
9	Bath	11'5" x 5'1"	54 sq. ft	Yes
10	Kitchen	8'11" x 21'0"	181 sq. ft	Yes
11	Garage	20'10" x 20'9"	432 sq. ft	No

Home data report

**7574 Cumberland Court, Bardmoor North, Bardmoor, Seminole,
Pinellas County, Florida, United States, 33777**

#		Dimensions	sqft	Counted as living area
12	Bath	10'0" x 6'7"	65 sq. ft	Yes
13	Foyer	8'3" x 5'6"	38 sq. ft	Yes
14	Hall	6'11" x 10'5"	50 sq. ft	Yes
15	Family Room	15'1" x 22'10"	306 sq. ft	Yes
16	Bedroom	11'5" x 13'6"	139 sq. ft	Yes
17	Screened Porch	56'3" x 20'8"	1156 sq. ft	No
18	Hall	7'0" x 3'5"	24 sq. ft	Yes
19	Laundry	11'5" x 8'5"	88 sq. ft	Yes
20	Porch	53'2" x 12'2"	395 sq. ft	No
21	W.I.C.	8'4" x 5'3"	45 sq. ft	Yes
22	Dining Area	15'3" x 19'4"	236 sq. ft	Yes

1 Floor 1 - Bath



Dimensions: 7'1" x 6'7"
Area: 42 sq. ft
Counted as living area: Yes

Heated: Yes
Finished: Yes
Enclosed: Yes
Contiguous: Yes
Permitted: Yes
Wet space: Yes
Addition: No
Conversion: No

2 Floor 1 - Swimming Pool



Dimensions: 28'0" x 12'6"
Area: 350 sq. ft
Counted as living area: No

Heated: No
Finished: No
Enclosed: No
Contiguous: Yes
Permitted: No
Wet space: No
Addition: No
Conversion: No

3 Floor 1 - Living Room



Dimensions: 15'3" x 22'10"
Area: 294 sq. ft
Counted as living area: Yes

Heated: Yes
Finished: Yes
Enclosed: Yes
Contiguous: Yes
Permitted: Yes
Wet space: No
Addition: No
Conversion: No

4 Floor 1 - Breakfast Nook



Dimensions: 9'9" x 6'7"
Area: 64 sq. ft
Counted as living area: Yes

Heated: Yes
Finished: Yes
Enclosed: Yes
Contiguous: Yes
Permitted: Yes
Wet space: No
Addition: No
Conversion: No

5 Floor 1 - Bedroom



Dimensions: 14'3" x 11'3"
Area: 157 sq. ft
Counted as living area: Yes

Heated: Yes
Finished: Yes
Enclosed: Yes
Contiguous: Yes
Permitted: Yes
Wet space: No
Addition: No
Conversion: No

7574 Cumberland Court, Bardmoor North, Bardmoor, Seminole,
Pinellas County, Florida, United States, 33777

6 Floor 1 - Bath



Dimensions: 5'8" x 5'0"
Area: 29 sq. ft
Counted as living area: Yes

Heated: Yes
Finished: Yes
Enclosed: Yes
Contiguous: Yes
Permitted: Yes
Wet space: Yes
Addition: No
Conversion: No

7 Floor 1 - Bedroom



Dimensions: 11'5" x 14'0"
Area: 160 sq. ft
Counted as living area: Yes

Heated: Yes
Finished: Yes
Enclosed: Yes
Contiguous: Yes
Permitted: Yes
Wet space: No
Addition: No
Conversion: No

8 Floor 1 - Primary Bedroom



Dimensions: 12'10" x 26'3"
Area: 284 sq. ft
Counted as living area: Yes

Heated: Yes
Finished: Yes
Enclosed: Yes
Contiguous: Yes
Permitted: Yes
Wet space: No
Addition: No
Conversion: No

7574 Cumberland Court, Bardmoor North, Bardmoor, Seminole,
Pinellas County, Florida, United States, 33777

9 Floor 1 - Bath



Dimensions: 11'5" x 5'1"
Area: 54 sq. ft
Counted as living area: Yes

Heated: Yes
Finished: Yes
Enclosed: Yes
Contiguous: Yes
Permitted: Yes
Wet space: Yes
Addition: No
Conversion: No

10 Floor 1 - Kitchen



Dimensions: 8'11" x 21'0"
Area: 181 sq. ft
Counted as living area: Yes

Heated: Yes
Finished: Yes
Enclosed: Yes
Contiguous: Yes
Permitted: Yes
Wet space: No
Addition: No
Conversion: No

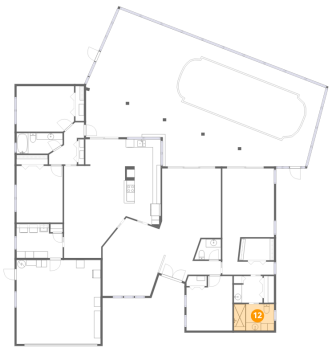
11 Floor 1 - Garage



Dimensions: 20'10" x 20'9"
Area: 432 sq. ft
Counted as living area: No

Heated: No
Finished: No
Enclosed: Yes
Contiguous: Yes
Permitted: Yes
Wet space: No
Addition: No
Conversion: No

12 Floor 1 - Bath



Dimensions: 10'0" x 6'7"
Area: 65 sq. ft
Counted as living area: Yes

Heated: Yes
Finished: Yes
Enclosed: Yes
Contiguous: Yes
Permitted: Yes
Wet space: Yes
Addition: No
Conversion: No

13 Floor 1 - Foyer



Dimensions: 8'3" x 5'6"
Area: 38 sq. ft
Counted as living area: Yes

Heated: Yes
Finished: Yes
Enclosed: Yes
Contiguous: Yes
Permitted: Yes
Wet space: No
Addition: No
Conversion: No

14 Floor 1 - Hall



Dimensions: 6'11" x 10'5"
Area: 50 sq. ft
Counted as living area: Yes

Heated: Yes
Finished: Yes
Enclosed: Yes
Contiguous: Yes
Permitted: Yes
Wet space: No
Addition: No
Conversion: No

7574 Cumberland Court, Bardmoor North, Bardmoor, Seminole,
Pinellas County, Florida, United States, 33777

15 Floor 1 - Family Room



Dimensions: 15'1" x 22'10"
Area: 306 sq. ft
Counted as living area: Yes

Heated: Yes
Finished: Yes
Enclosed: Yes
Contiguous: Yes
Permitted: Yes
Wet space: No
Addition: No
Conversion: No

16 Floor 1 - Bedroom



Dimensions: 11'5" x 13'6"
Area: 139 sq. ft
Counted as living area: Yes

Heated: Yes
Finished: Yes
Enclosed: Yes
Contiguous: Yes
Permitted: Yes
Wet space: No
Addition: No
Conversion: No

17 Floor 1 - Screened Porch



Dimensions: 56'3" x 20'8"
Area: 1156 sq. ft
Counted as living area: No

Heated: No
Finished: No
Enclosed: No
Contiguous: Yes
Permitted: Yes
Wet space: No
Addition: No
Conversion: No

7574 Cumberland Court, Bardmoor North, Bardmoor, Seminole,
Pinellas County, Florida, United States, 33777

18 Floor 1 - Hall



Dimensions: 7'0" x 3'5"
Area: 24 sq. ft
Counted as living area: Yes

Heated: Yes
Finished: Yes
Enclosed: Yes
Contiguous: Yes
Permitted: Yes
Wet space: No
Addition: No
Conversion: No

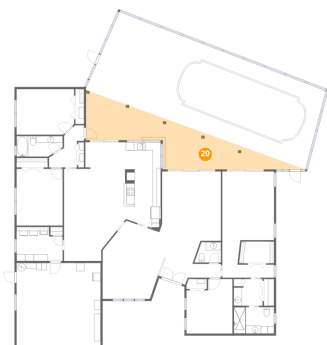
19 Floor 1 - Laundry



Dimensions: 11'5" x 8'5"
Area: 88 sq. ft
Counted as living area: Yes

Heated: Yes
Finished: Yes
Enclosed: Yes
Contiguous: Yes
Permitted: Yes
Wet space: No
Addition: No
Conversion: No

20 Floor 1 - Porch



Dimensions: 53'2" x 12'2"
Area: 395 sq. ft
Counted as living area: No

Heated: No
Finished: No
Enclosed: No
Contiguous: Yes
Permitted: Yes
Wet space: No
Addition: No
Conversion: No

21 Floor 1 - W.I.C.



Dimensions: 8'4" x 5'3"
Area: 45 sq. ft
Counted as living area: Yes

Heated: Yes
Finished: Yes
Enclosed: Yes
Contiguous: Yes
Permitted: Yes
Wet space: No
Addition: No
Conversion: No

22 Floor 1 - Dining Area



Dimensions: 15'3" x 19'4"
Area: 236 sq. ft
Counted as living area: Yes

Heated: Yes
Finished: Yes
Enclosed: Yes
Contiguous: Yes
Permitted: Yes
Wet space: No
Addition: No
Conversion: No