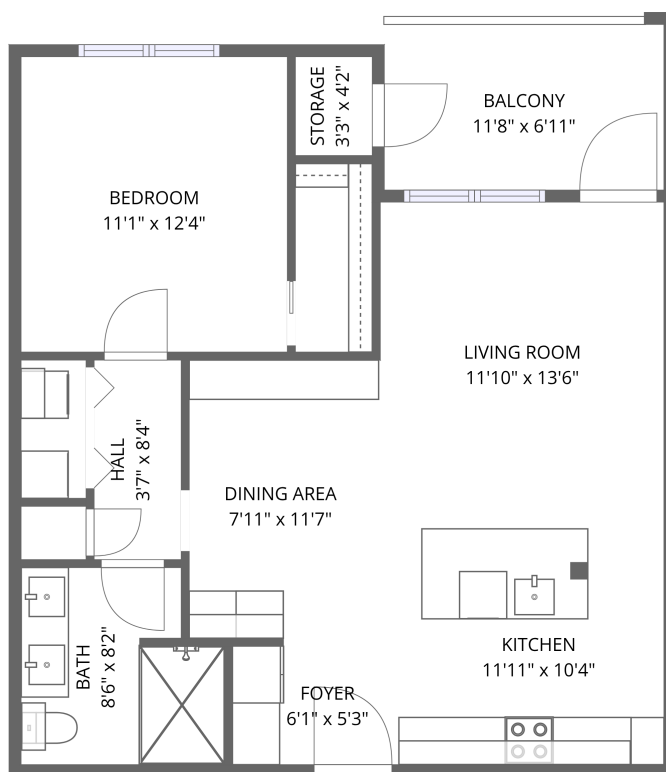


Home data report

**5000 Culbreath Key Way, Bayside West, Tampa, Hillsborough County, Florida, United States, 33611, unit 9216**



1st floor

**Total Area: 705 sq. ft**

1st Floor: 705 sq. ft

Excluded: Storage 13 sq. ft, Balcony 81 sq. ft, Walls: 0 sq. ft

## Property summary

 **1** Floors

 **1** Bedrooms

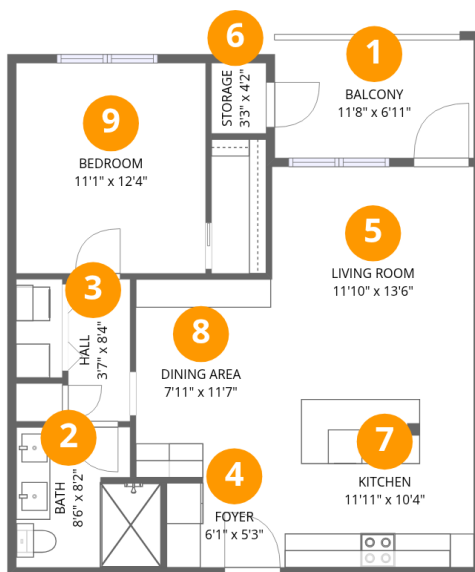
 **1** Bathrooms

Scan captured on Wed, 29 Apr 2026 17:02:35 GMT

MEASUREMENTS ARE APPROXIMATE. DEEMED HIGHLY RELIABLE BUT NOT GUARANTEED.

## Home data report

5000 Culbreath Key Way, Bayside West, Tampa, Hillsborough County, Florida, United States, 33611, unit 9216



## Room dimensions

Floor 1

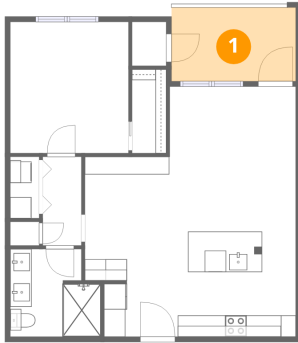
Total:705sqft Excluded: 94sqft

#		Dimensions	sqft	Counted as living area
1	Balcony	11'8" x 6'11"	81 sq. ft	No
2	Bath	8'6" x 8'2"	63 sq. ft	Yes
3	Hall	3'7" x 8'4"	30 sq. ft	Yes
4	Foyer	6'1" x 5'3"	31 sq. ft	Yes
5	Living Room	11'10" x 13'6"	155 sq. ft	Yes
6	Storage	3'3" x 4'2"	13 sq. ft	No
7	Kitchen	11'11" x 10'4"	124 sq. ft	Yes
8	Dining Area	7'11" x 11'7"	92 sq. ft	Yes
9	Bedroom	11'1" x 12'4"	137 sq. ft	Yes

5000 Culbreath Key Way, Bayside West, Tampa, Hillsborough County, Florida, United States, 33611, unit 9216

**1** Floor 1 - Balcony

---

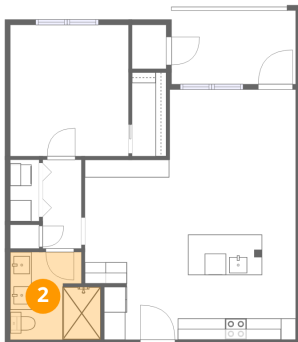


Dimensions: 11'8" x 6'11"  
Area: 81 sq. ft  
Counted as living area: No

Heated: No  
Finished: No  
Enclosed: No  
Contiguous: Yes  
Permitted: Yes  
Wet space: No  
Addition: No  
Conversion: No

**2** Floor 1 - Bath

---

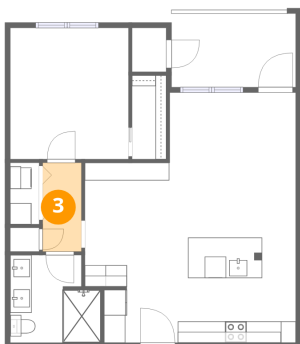


Dimensions: 8'6" x 8'2"  
Area: 63 sq. ft  
Counted as living area: Yes

Heated: Yes  
Finished: Yes  
Enclosed: Yes  
Contiguous: Yes  
Permitted: Yes  
Wet space: Yes  
Addition: No  
Conversion: No

5000 Culbreath Key Way, Bayside West, Tampa, Hillsborough County, Florida, United States, 33611, unit 9216

**3** Floor 1 - Hall



Dimensions: 3'7" x 8'4"  
Area: 30 sq. ft  
Counted as living area: Yes

Heated: Yes  
Finished: Yes  
Enclosed: Yes  
Contiguous: Yes  
Permitted: Yes  
Wet space: No  
Addition: No  
Conversion: No

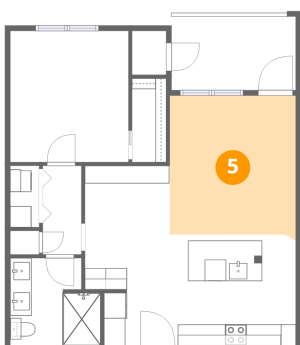
**4** Floor 1 - Foyer



Dimensions: 6'1" x 5'3"  
Area: 31 sq. ft  
Counted as living area: Yes

Heated: Yes  
Finished: Yes  
Enclosed: Yes  
Contiguous: Yes  
Permitted: Yes  
Wet space: No  
Addition: No  
Conversion: No

**5** Floor 1 - Living Room

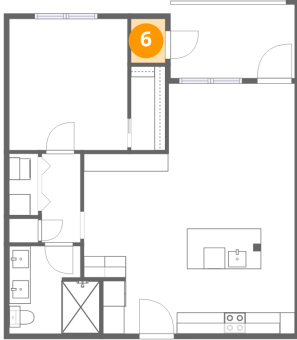


Dimensions: 11'10" x 13'6"  
Area: 155 sq. ft  
Counted as living area: Yes

Heated: Yes  
Finished: Yes  
Enclosed: Yes  
Contiguous: Yes  
Permitted: Yes  
Wet space: No  
Addition: No  
Conversion: No

5000 Culbreath Key Way, Bayside West, Tampa, Hillsborough County, Florida, United States, 33611, unit 9216

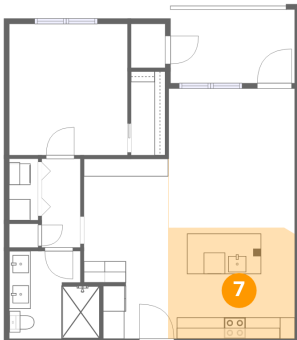
**6** Floor 1 - Storage



Dimensions: 3'3" x 4'2"  
Area: 13 sq. ft  
Counted as living area: No

Heated: No  
Finished: No  
Enclosed: No  
Contiguous: Yes  
Permitted: Yes  
Wet space: No  
Addition: No  
Conversion: No

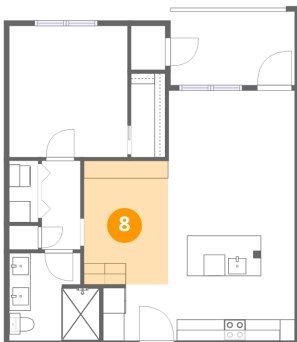
**7** Floor 1 - Kitchen



Dimensions: 11'11" x 10'4"  
Area: 124 sq. ft  
Counted as living area: Yes

Heated: Yes  
Finished: Yes  
Enclosed: Yes  
Contiguous: Yes  
Permitted: Yes  
Wet space: No  
Addition: No  
Conversion: No

**8** Floor 1 - Dining Area

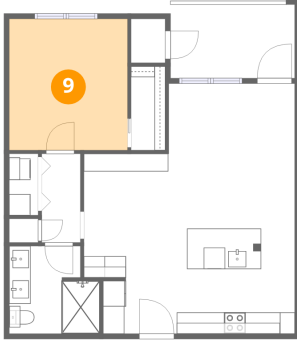


Dimensions: 7'11" x 11'7"  
Area: 92 sq. ft  
Counted as living area: Yes

Heated: Yes  
Finished: Yes  
Enclosed: Yes  
Contiguous: Yes  
Permitted: Yes  
Wet space: No  
Addition: No  
Conversion: No

**5000 Culbreath Key Way, Bayside West, Tampa, Hillsborough County, Florida, United States, 33611, unit 9216**

**9 Floor 1 - Bedroom**



**Dimensions: 11'1" x 12'4"**  
**Area: 137 sq. ft**  
**Counted as living area: Yes**

**Heated: Yes**  
**Finished: Yes**  
**Enclosed: Yes**  
**Contiguous: Yes**  
**Permitted: Yes**  
**Wet space: No**  
**Addition: No**  
**Conversion: No**