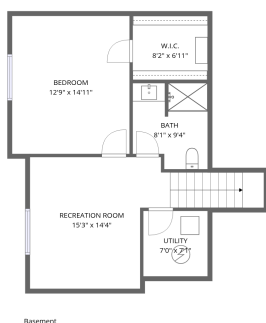
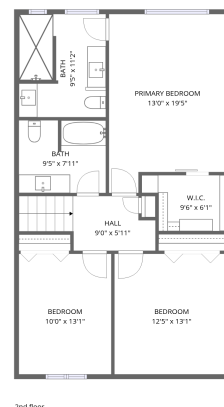
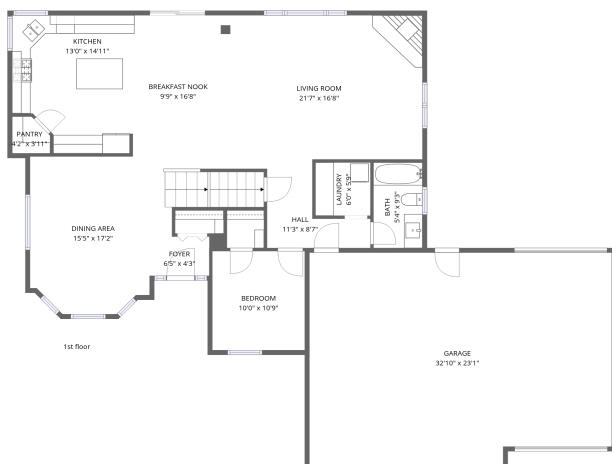


Home data report

4816 Dovetail Avenue, Shiloh, Billings, Yellowstone County, Montana, United States, 59106



Total Area: 2774 sq. ft

Basement: 565 sq. ft, 1st Floor: 1318 sq. ft, 2nd Floor: 891 sq. ft

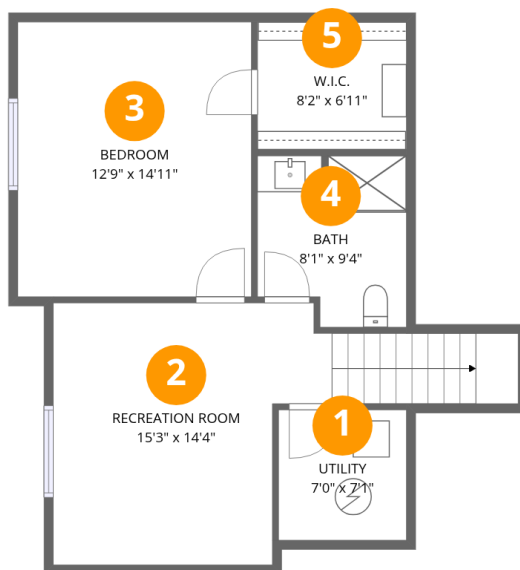
Excluded: Utility 50 sq. ft, Garage 733 sq. ft, Walls: 250 sq. ft

Property summary



Home data report

4816 Dovetail Avenue, Shiloh, Billings, Yellowstone County, Montana, United States, 59106



Room dimensions

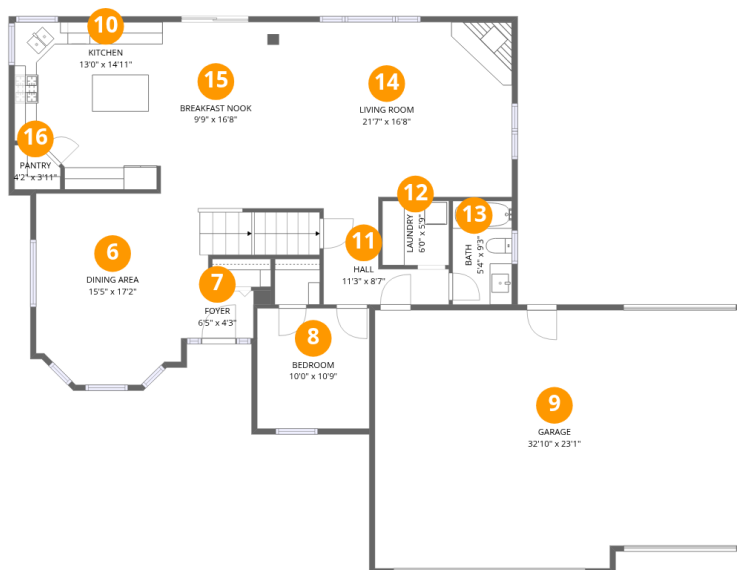
Floor 1 Below grade

Total:565sqft Excluded: 50sqft

#		Dimensions	sqft	Counted as living area
1	Utility	7'0" x 7'1"	50 sq. ft	No
2	Recreation Room	15'3" x 14'4"	218 sq. ft	Yes
3	Bedroom	12'9" x 14'11"	191 sq. ft	Yes
4	Bath	8'1" x 9'4"	76 sq. ft	Yes
5	W.I.C.	8'2" x 6'11"	56 sq. ft	Yes

Home data report

4816 Dovetail Avenue, Shiloh, Billings, Yellowstone County, Montana, United States, 59106



Room dimensions

Floor 2

Total:1318sqft Excluded: 733sqft

#		Dimensions	sqft	Counted as living area
6	Dining Area	15'5" x 17'2"	264 sq. ft	Yes
7	Foyer	6'5" x 4'3"	27 sq. ft	Yes
8	Bedroom	10'0" x 10'9"	108 sq. ft	Yes
9	Garage	32'10" x 23'1"	757 sq. ft	No
10	Kitchen	13'0" x 14'11"	194 sq. ft	Yes
11	Hall	11'3" x 8'7"	96 sq. ft	Yes
12	Laundry	6'0" x 5'9"	34 sq. ft	Yes
13	Bath	5'4" x 9'3"	49 sq. ft	Yes
14	Living Room	21'7" x 16'8"	359 sq. ft	Yes
15	Breakfast Nook	9'9" x 16'8"	163 sq. ft	Yes
16	Pantry	4'2" x 3'11"	16 sq. ft	Yes

Home data report

4816 Dovetail Avenue, Shiloh, Billings, Yellowstone County, Montana, United States, 59106



Room dimensions

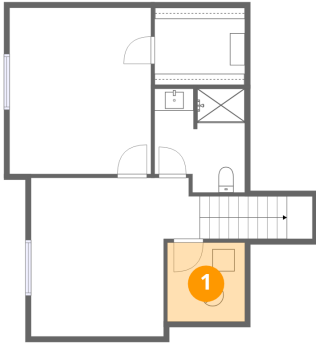
Floor 3

Total:891sqft Excluded: 0sqft

#		Dimensions	sqft	Counted as living area
17	Bath	9'5" x 7'11"	74 sq. ft	Yes
18	Bedroom	12'5" x 13'1"	163 sq. ft	Yes
19	Bedroom	10'0" x 13'1"	131 sq. ft	Yes
20	Primary Bedroom	13'0" x 19'5"	253 sq. ft	Yes
21	Hall	9'0" x 5'11"	53 sq. ft	Yes
22	Bath	9'5" x 11'2"	106 sq. ft	Yes
23	W.I.C.	9'6" x 6'1"	57 sq. ft	Yes

4816 Dovetail Avenue, Shiloh, Billings, Yellowstone County,
Montana, United States, 59106

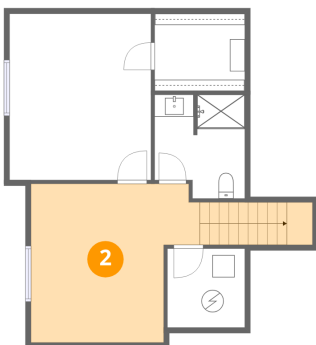
1 Floor 1 - Utility



Dimensions: 7'0" x 7'1"
Area: 50 sq. ft
Counted as living area: No

Heated: Yes
Finished: No
Enclosed: Yes
Contiguous: Yes
Permitted: Yes
Wet space: No
Addition: No
Conversion: No

2 Floor 1 - Recreation Room

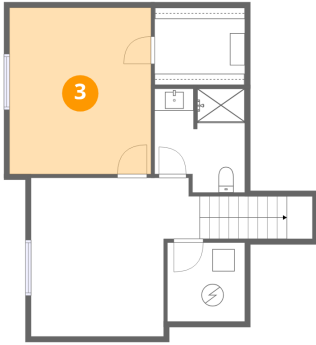


Dimensions: 15'3" x 14'4"
Area: 218 sq. ft
Counted as living area: Yes

Heated: Yes
Finished: Yes
Enclosed: Yes
Contiguous: Yes
Permitted: Yes
Wet space: No
Addition: No
Conversion: No

4816 Dovetail Avenue, Shiloh, Billings, Yellowstone County,
Montana, United States, 59106

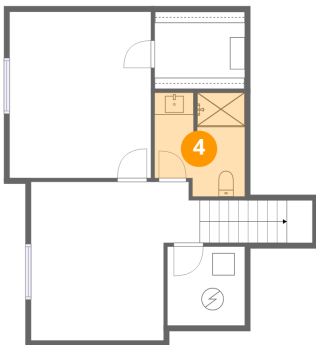
3 Floor 1 - Bedroom



Dimensions: 12'9" x 14'11"
Area: 191 sq. ft
Counted as living area: Yes

Heated: Yes
Finished: Yes
Enclosed: Yes
Contiguous: Yes
Permitted: Yes
Wet space: No
Addition: No
Conversion: No

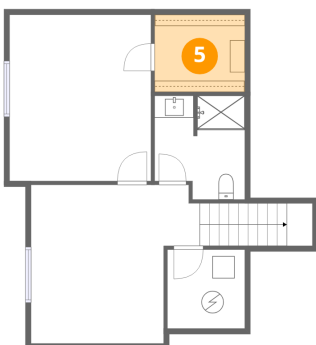
4 Floor 1 - Bath



Dimensions: 8'1" x 9'4"
Area: 76 sq. ft
Counted as living area: Yes

Heated: Yes
Finished: Yes
Enclosed: Yes
Contiguous: Yes
Permitted: Yes
Wet space: Yes
Addition: No
Conversion: No

5 Floor 1 - W.I.C.

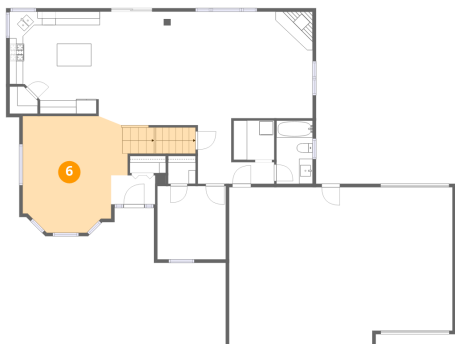


Dimensions: 8'2" x 6'11"
Area: 56 sq. ft
Counted as living area: Yes

Heated: Yes
Finished: Yes
Enclosed: Yes
Contiguous: Yes
Permitted: Yes
Wet space: No
Addition: No
Conversion: No

4816 Dovetail Avenue, Shiloh, Billings, Yellowstone County, Montana, United States, 59106

6 Floor 2 - Dining Area



Dimensions: 15'5" x 17'2"
Area: 264 sq. ft
Counted as living area: Yes

Heated: Yes
Finished: Yes
Enclosed: Yes
Contiguous: Yes
Permitted: Yes
Wet space: No
Addition: No
Conversion: No

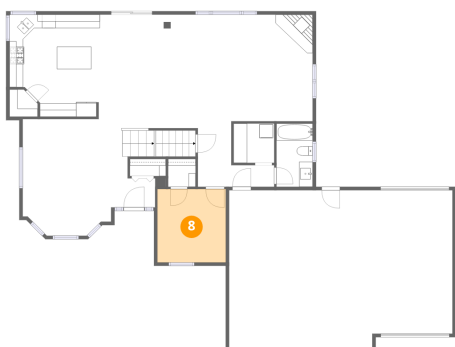
7 Floor 2 - Foyer



Dimensions: 6'5" x 4'3"
Area: 27 sq. ft
Counted as living area: Yes

Heated: Yes
Finished: Yes
Enclosed: Yes
Contiguous: Yes
Permitted: Yes
Wet space: No
Addition: No
Conversion: No

8 Floor 2 - Bedroom



Dimensions: 10'0" x 10'9"
Area: 108 sq. ft
Counted as living area: Yes

Heated: Yes
Finished: Yes
Enclosed: Yes
Contiguous: Yes
Permitted: Yes
Wet space: No
Addition: No
Conversion: No

4816 Dovetail Avenue, Shiloh, Billings, Yellowstone County, Montana, United States, 59106

9 Floor 2 - Garage



Dimensions: 32'10" x 23'1"

Area: 757 sq. ft

Counted as living area: No

Heated: No

Finished: No

Enclosed: Yes

Contiguous: Yes

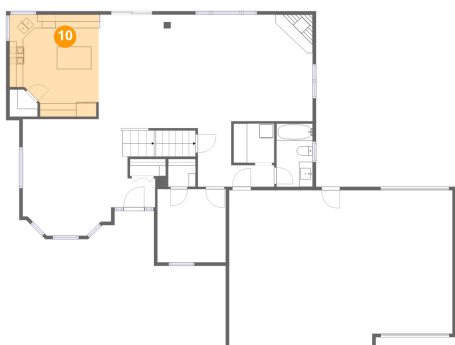
Permitted: Yes

Wet space: No

Addition: No

Conversion: No

10 Floor 2 - Kitchen



Dimensions: 13'0" x 14'11"

Area: 194 sq. ft

Counted as living area: Yes

Heated: Yes

Finished: Yes

Enclosed: Yes

Contiguous: Yes

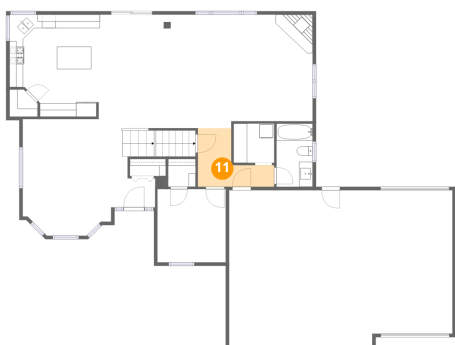
Permitted: Yes

Wet space: No

Addition: No

Conversion: No

11 Floor 2 - Hall



Dimensions: 11'3" x 8'7"

Area: 96 sq. ft

Counted as living area: Yes

Heated: Yes

Finished: Yes

Enclosed: Yes

Contiguous: Yes

Permitted: Yes

Wet space: No

Addition: No

Conversion: No

4816 Dovetail Avenue, Shiloh, Billings, Yellowstone County, Montana, United States, 59106

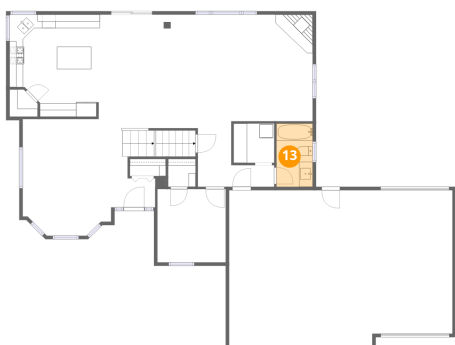
12 Floor 2 - Laundry



Dimensions: 6'0" x 5'9"
Area: 34 sq. ft
Counted as living area: Yes

Heated: Yes
Finished: Yes
Enclosed: Yes
Contiguous: Yes
Permitted: Yes
Wet space: No
Addition: No
Conversion: No

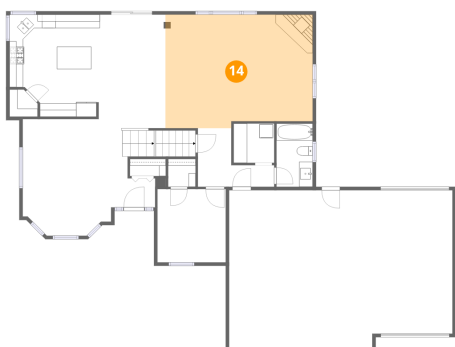
13 Floor 2 - Bath



Dimensions: 5'4" x 9'3"
Area: 49 sq. ft
Counted as living area: Yes

Heated: Yes
Finished: Yes
Enclosed: Yes
Contiguous: Yes
Permitted: Yes
Wet space: Yes
Addition: No
Conversion: No

14 Floor 2 - Living Room

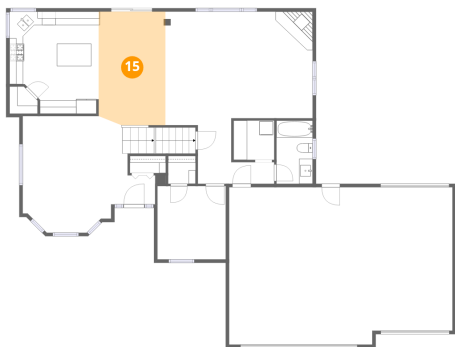


Dimensions: 21'7" x 16'8"
Area: 359 sq. ft
Counted as living area: Yes

Heated: Yes
Finished: Yes
Enclosed: Yes
Contiguous: Yes
Permitted: Yes
Wet space: No
Addition: No
Conversion: No

4816 Dovetail Avenue, Shiloh, Billings, Yellowstone County, Montana, United States, 59106

15 Floor 2 - Breakfast Nook



Dimensions: 9'9" x 16'8"
Area: 163 sq. ft
Counted as living area: Yes

Heated: Yes
Finished: Yes
Enclosed: Yes
Contiguous: Yes
Permitted: Yes
Wet space: No
Addition: No
Conversion: No

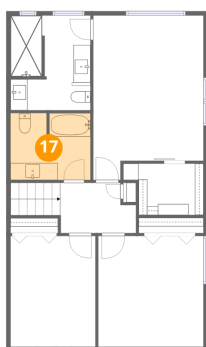
16 Floor 2 - Pantry



Dimensions: 4'2" x 3'11"
Area: 16 sq. ft
Counted as living area: Yes

Heated: Yes
Finished: Yes
Enclosed: Yes
Contiguous: Yes
Permitted: Yes
Wet space: No
Addition: No
Conversion: No

17 Floor 3 - Bath

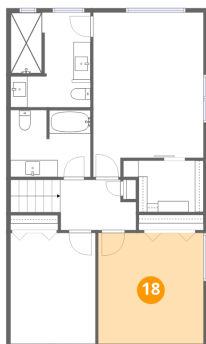


Dimensions: 9'5" x 7'11"
Area: 74 sq. ft
Counted as living area: Yes

Heated: Yes
Finished: Yes
Enclosed: Yes
Contiguous: Yes
Permitted: Yes
Wet space: Yes
Addition: No
Conversion: No

4816 Dovetail Avenue, Shiloh, Billings, Yellowstone County, Montana, United States, 59106

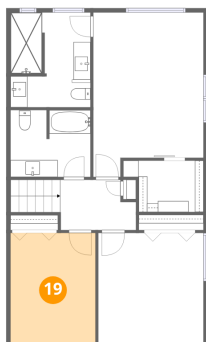
18 Floor 3 - Bedroom



Dimensions: 12'5" x 13'1"
Area: 163 sq. ft
Counted as living area: Yes

Heated: Yes
Finished: Yes
Enclosed: Yes
Contiguous: Yes
Permitted: Yes
Wet space: No
Addition: No
Conversion: No

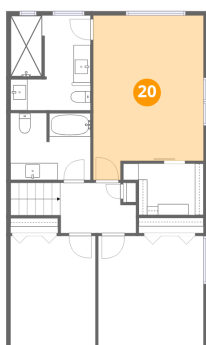
19 Floor 3 - Bedroom



Dimensions: 10'0" x 13'1"
Area: 131 sq. ft
Counted as living area: Yes

Heated: Yes
Finished: Yes
Enclosed: Yes
Contiguous: Yes
Permitted: Yes
Wet space: No
Addition: No
Conversion: No

20 Floor 3 - Primary Bedroom

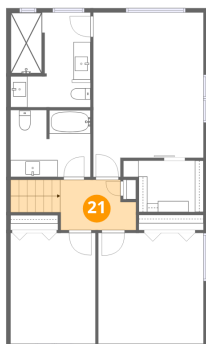


Dimensions: 13'0" x 19'5"
Area: 253 sq. ft
Counted as living area: Yes

Heated: Yes
Finished: Yes
Enclosed: Yes
Contiguous: Yes
Permitted: Yes
Wet space: No
Addition: No
Conversion: No

4816 Dovetail Avenue, Shiloh, Billings, Yellowstone County, Montana, United States, 59106

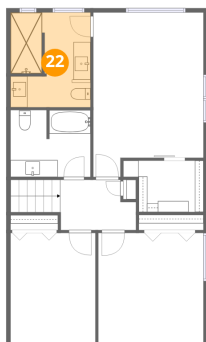
21 Floor 3 - Hall



Dimensions: 9'0" x 5'11"
Area: 53 sq. ft
Counted as living area: Yes

Heated: Yes
Finished: Yes
Enclosed: Yes
Contiguous: Yes
Permitted: Yes
Wet space: No
Addition: No
Conversion: No

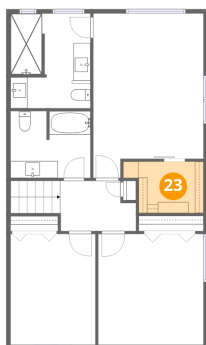
22 Floor 3 - Bath



Dimensions: 9'5" x 11'2"
Area: 106 sq. ft
Counted as living area: Yes

Heated: Yes
Finished: Yes
Enclosed: Yes
Contiguous: Yes
Permitted: Yes
Wet space: Yes
Addition: No
Conversion: No

23 Floor 3 - W.I.C.



Dimensions: 9'6" x 6'1"
Area: 57 sq. ft
Counted as living area: Yes

Heated: Yes
Finished: Yes
Enclosed: Yes
Contiguous: Yes
Permitted: Yes
Wet space: No
Addition: No
Conversion: No