



Total Area: 2534 sq. ft

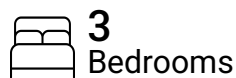
1st Floor: 1310 sq. ft, 2nd Floor: 1224 sq. ft

Excluded: Walls: 169 sq. ft

Property summary



2 Floors



3 Bedrooms



2 Bathrooms

Home data report

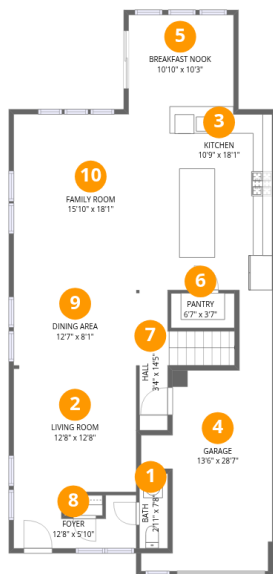
28057 Sea Dock Ln, Selbyville, DE, US



1
Half baths



1
Garages

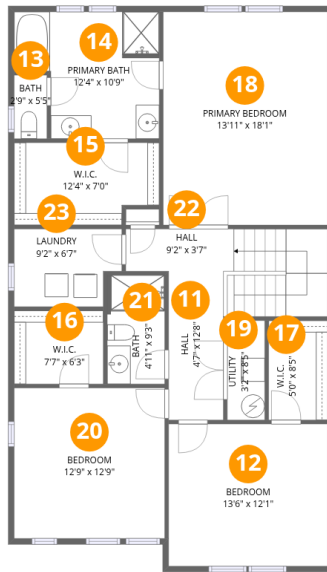


Room dimensions

Floor 1

Total: 1310 sqft Excluded: 0 sqft

#		Dimensions	sqft	Counted as living area
1	Bath	2'11" x 7'8"	22 sq. ft	Yes
2	Living Room	12'8" x 12'8"	160 sq. ft	Yes
3	Kitchen	10'9" x 18'1"	194 sq. ft	Yes
4	Garage	13'6" x 28'7"	386 sq. ft	Yes
5	Breakfast Nook	10'10" x 10'3"	111 sq. ft	Yes
6	Pantry	6'7" x 3'7"	24 sq. ft	Yes
7	Hall	3'4" x 14'5"	49 sq. ft	Yes
8	Foyer	12'8" x 5'10"	73 sq. ft	Yes
9	Dining Area	12'7" x 8'1"	102 sq. ft	Yes
10	Family Room	15'10" x 18'1"	287 sq. ft	Yes



Room dimensions

Floor 2

Total: 1224 sqft

Excluded: 0 sqft

#		Dimensions	sqft	Counted as living area
11	Hall	4'7" x 12'8"	58 sq. ft	Yes
12	Bedroom	13'6" x 12'1"	163 sq. ft	Yes
13	Bath	2'9" x 5'5"	15 sq. ft	Yes
14	Primary Bath	12'4" x 10'9"	133 sq. ft	Yes
15	W.I.C.	12'4" x 7'0"	86 sq. ft	Yes
16	W.I.C.	7'7" x 6'3"	47 sq. ft	Yes
17	W.I.C.	5'0" x 8'5"	42 sq. ft	Yes
18	Primary Bedroom	13'11" x 18'1"	252 sq. ft	Yes
19	Utility	3'2" x 8'5"	27 sq. ft	Yes
20	Bedroom	12'9" x 12'9"	163 sq. ft	Yes
21	Bath	4'11" x 9'3"	45 sq. ft	Yes

Home data report

28057 Sea Dock Ln,Selbyville,DE,US

#		Dimensions	sqft	Counted as living area
22	Hall	9'2" x 3'7"	33 sq. ft	Yes
23	Laundry	9'2" x 6'7"	60 sq. ft	Yes

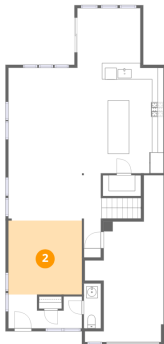
1 Floor 1 - Bath



Dimensions: 2'11" x 7'8"
Area: 22 sq. ft
Counted as living area: Yes

Heated: Yes
Finished: Yes
Enclosed: Yes
Contiguous: Yes
Permitted: Yes
Wet space: Yes
Addition: No
Conversion: No

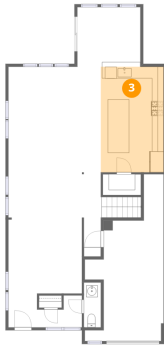
2 Floor 1 - Living Room



Dimensions: 12'8" x 12'8"
Area: 160 sq. ft
Counted as living area: Yes

Heated: Yes
Finished: Yes
Enclosed: Yes
Contiguous: Yes
Permitted: Yes
Wet space: No
Addition: No
Conversion: No

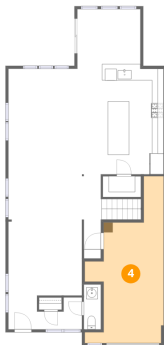
3 Floor 1 - Kitchen



Dimensions: 10'9" x 18'1"
Area: 194 sq. ft
Counted as living area: Yes

Heated: Yes
Finished: Yes
Enclosed: Yes
Contiguous: Yes
Permitted: Yes
Wet space: No
Addition: No
Conversion: No

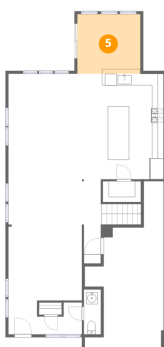
4 Floor 1 - Garage



Dimensions: 13'6" x 28'7"
Area: 386 sq. ft
Counted as living area: No

Heated: No
Finished: Yes
Enclosed: Yes
Contiguous: Yes
Permitted: Yes
Wet space: No
Addition: No
Conversion: No

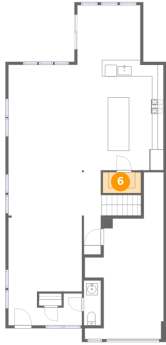
5 Floor 1 - Breakfast Nook



Dimensions: 10'10" x 10'3"
Area: 111 sq. ft
Counted as living area: Yes

Heated: Yes
Finished: Yes
Enclosed: Yes
Contiguous: Yes
Permitted: Yes
Wet space: No
Addition: No
Conversion: No

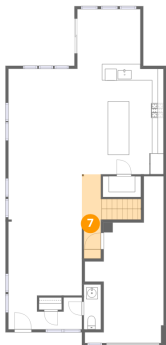
6 Floor 1 - Pantry



Dimensions: 6'7" x 3'7"
Area: 24 sq. ft
Counted as living area: Yes

Heated: Yes
Finished: Yes
Enclosed: Yes
Contiguous: Yes
Permitted: Yes
Wet space: No
Addition: No
Conversion: No

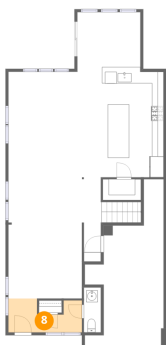
7 Floor 1 - Hall



Dimensions: 3'4" x 14'5"
Area: 49 sq. ft
Counted as living area: Yes

Heated: Yes
Finished: Yes
Enclosed: Yes
Contiguous: Yes
Permitted: Yes
Wet space: No
Addition: No
Conversion: No

8 Floor 1 - Foyer



Dimensions: 12'8" x 5'10"
Area: 73 sq. ft
Counted as living area: Yes

Heated: Yes
Finished: Yes
Enclosed: Yes
Contiguous: Yes
Permitted: Yes
Wet space: No
Addition: No
Conversion: No

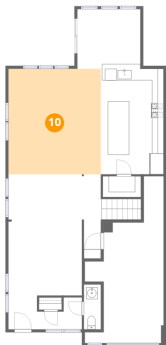
9 Floor 1 - Dining Area



Dimensions: 12'7" x 8'1"
Area: 102 sq. ft
Counted as living area: Yes

Heated: Yes
Finished: Yes
Enclosed: Yes
Contiguous: Yes
Permitted: Yes
Wet space: No
Addition: No
Conversion: No

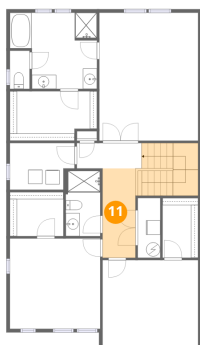
10 Floor 1 - Family Room



Dimensions: 15'10" x 18'1"
Area: 287 sq. ft
Counted as living area: Yes

Heated: Yes
Finished: Yes
Enclosed: Yes
Contiguous: Yes
Permitted: Yes
Wet space: No
Addition: No
Conversion: No

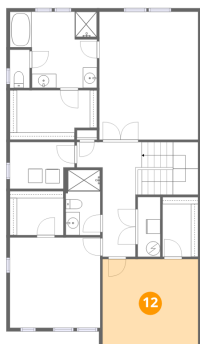
11 Floor 2 - Hall



Dimensions: 4'7" x 12'8"
Area: 58 sq. ft
Counted as living area: Yes

Heated: Yes
Finished: Yes
Enclosed: Yes
Contiguous: Yes
Permitted: Yes
Wet space: No
Addition: No
Conversion: No

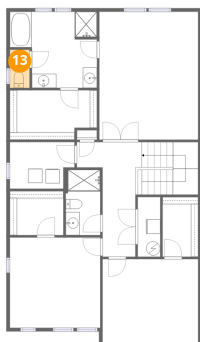
12 Floor 2 - Bedroom



Dimensions: 13'6" x 12'1"
Area: 163 sq. ft
Counted as living area: Yes

Heated: Yes
Finished: Yes
Enclosed: Yes
Contiguous: Yes
Permitted: Yes
Wet space: No
Addition: No
Conversion: No

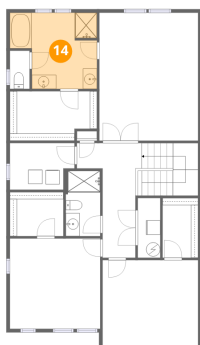
13 Floor 2 - Bath



Dimensions: 2'9" x 5'5"
Area: 15 sq. ft
Counted as living area: Yes

Heated: Yes
Finished: Yes
Enclosed: Yes
Contiguous: Yes
Permitted: Yes
Wet space: Yes
Addition: No
Conversion: No

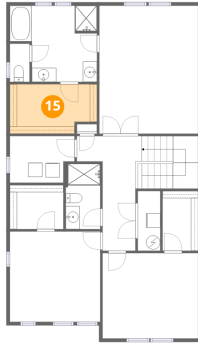
14 Floor 2 - Primary Bath



Dimensions: 12'4" x 10'9"
Area: 133 sq. ft
Counted as living area: Yes

Heated: Yes
Finished: Yes
Enclosed: Yes
Contiguous: Yes
Permitted: Yes
Wet space: Yes
Addition: No
Conversion: No

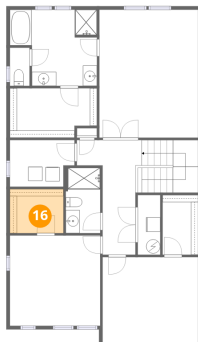
15 Floor 2 - W.I.C.



Dimensions: 12'4" x 7'0"
Area: 86 sq. ft
Counted as living area: Yes

Heated: Yes
Finished: Yes
Enclosed: Yes
Contiguous: Yes
Permitted: Yes
Wet space: No
Addition: No
Conversion: No

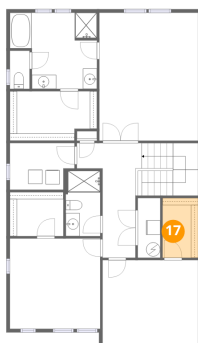
16 Floor 2 - W.I.C.



Dimensions: 7'7" x 6'3"
Area: 47 sq. ft
Counted as living area: Yes

Heated: Yes
Finished: Yes
Enclosed: Yes
Contiguous: Yes
Permitted: Yes
Wet space: No
Addition: No
Conversion: No

17 Floor 2 - W.I.C.



Dimensions: 5'0" x 8'5"
Area: 42 sq. ft
Counted as living area: Yes

Heated: Yes
Finished: Yes
Enclosed: Yes
Contiguous: Yes
Permitted: Yes
Wet space: No
Addition: No
Conversion: No

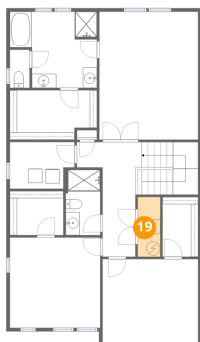
18 Floor 2 - Primary Bedroom



Dimensions: 13'11" x 18'1"
Area: 252 sq. ft
Counted as living area: Yes

Heated: Yes
Finished: Yes
Enclosed: Yes
Contiguous: Yes
Permitted: Yes
Wet space: No
Addition: No
Conversion: No

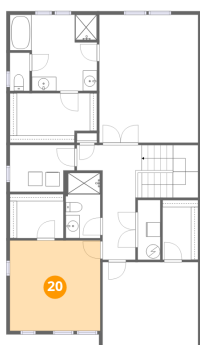
19 Floor 2 - Utility



Dimensions: 3'2" x 8'5"
Area: 27 sq. ft
Counted as living area: Yes

Heated: Yes
Finished: Yes
Enclosed: Yes
Contiguous: Yes
Permitted: Yes
Wet space: No
Addition: No
Conversion: No

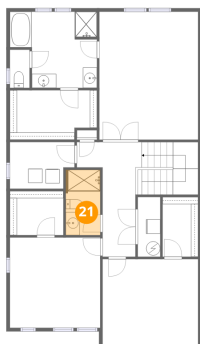
20 Floor 2 - Bedroom



Dimensions: 12'9" x 12'9"
Area: 163 sq. ft
Counted as living area: Yes

Heated: Yes
Finished: Yes
Enclosed: Yes
Contiguous: Yes
Permitted: Yes
Wet space: No
Addition: No
Conversion: No

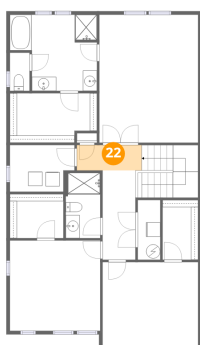
21 Floor 2 - Bath



Dimensions: 4'11" x 9'3"
Area: 45 sq. ft
Counted as living area: Yes

Heated: Yes
Finished: Yes
Enclosed: Yes
Contiguous: Yes
Permitted: Yes
Wet space: Yes
Addition: No
Conversion: No

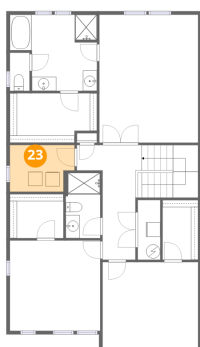
22 Floor 2 - Hall



Dimensions: 9'2" x 3'7"
Area: 33 sq. ft
Counted as living area: Yes

Heated: Yes
Finished: Yes
Enclosed: Yes
Contiguous: Yes
Permitted: Yes
Wet space: No
Addition: No
Conversion: No

23 Floor 2 - Laundry



Dimensions: 9'2" x 6'7"
Area: 60 sq. ft
Counted as living area: Yes

Heated: Yes
Finished: Yes
Enclosed: Yes
Contiguous: Yes
Permitted: Yes
Wet space: No
Addition: No
Conversion: No