

214 Lockhard Cir, Troutman, NC, US

Gross Living Area: 2330 sq. ft

Level 1

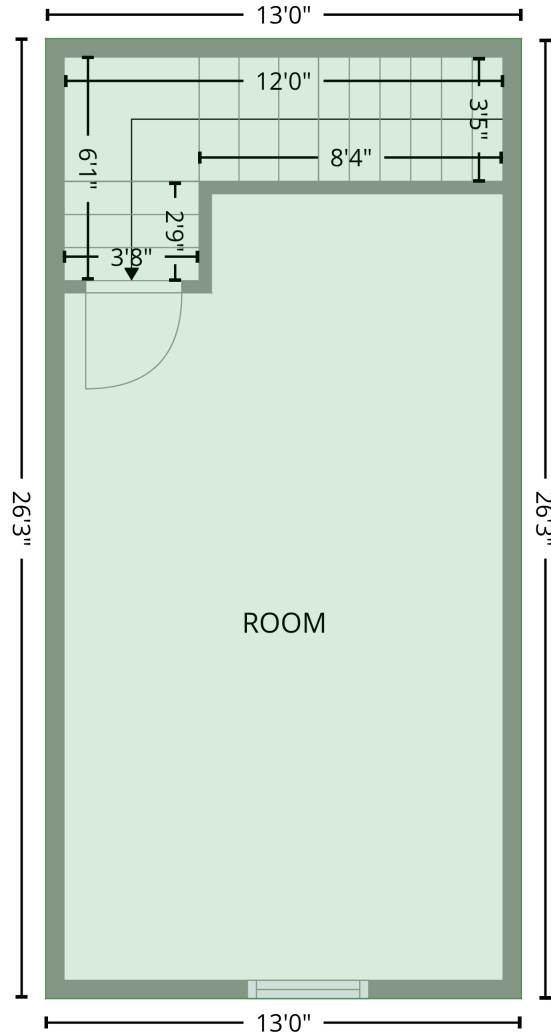
Space	Area (sq. ft)	Calculation <small>Coordinate Polygon Area Algorithm using inches</small>
PORCH (Non-living area)	175	$-\left((546 + 546) * (434.6 - 535) + (546 + 294.5) * (535 - 535) + (294.5 + 294.5) * (535 - 434.6) + (294.5 + 546) * (434.6 - 434.6)\right) * 0.5 * 0.00694$
COVERED DECK (Non-living area)	142	$-\left((510.1 + 510.1) * (-18.9 - 73.2) + (510.1 + 557.6) * (73.2 - 73.2) + (557.6 + 557.6) * (73.2 - 113.7) + (557.6 + 369.9) * (113.7 - 113.7) + (369.9 + 369.9) * (113.7 - -18.9) + (369.9 + 510.1) * (-18.9 - -18.9)\right) * 0.5 * 0.00694$

214 Lockhard Cir, Troutman, NC, US

Gross Living Area: 2330 sq. ft

Level 2

2nd floor
[AREA: 341]



Space	Area (sq. ft)	Calculation <small>Coordinate Polygon Area Algorithm using inches</small>
2nd floor (Living area)	341	$-\left(\left(221.2 + 221.2\right) * \left(411.7 - 726.8\right) + \left(221.2 + 65.2\right) * \left(726.8 - 726.8\right) + \left(65.2 + 65.2\right) * \left(726.8 - 411.7\right) + \left(65.2 + 221.2\right) * \left(411.7 - 411.7\right)\right) * 0.5 * 0.00694$