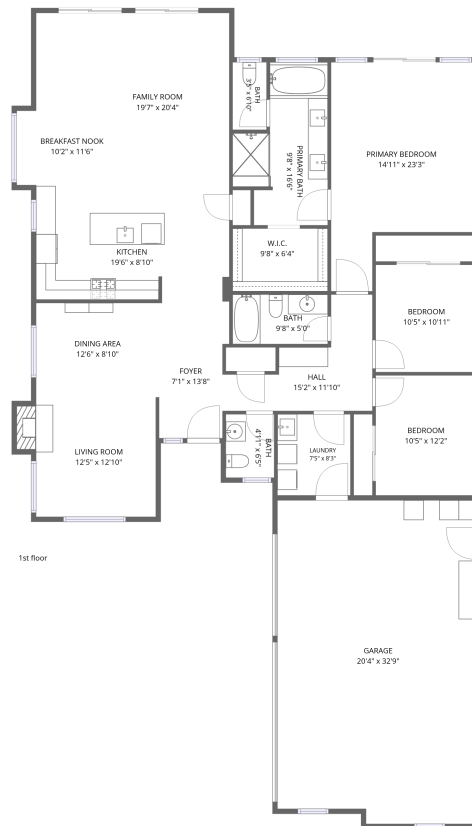


Home data report

1179 Grand Meadow Way, Orcutt, CA, US



Total Area: 2059 sq. ft

1st Floor: 2059 sq. ft

Excluded: Garage 654 sq. ft, Fireplace 11 sq. ft, Walls: 144 sq. ft

Property summary

 **1** Floors

 **3** Bedrooms

 **2** Bathrooms

Home data report

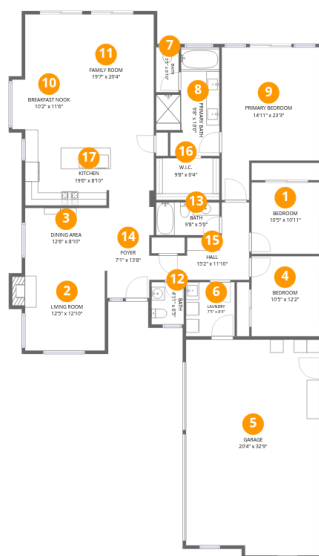
1179 Grand Meadow Way, Orcutt, CA, US

 **1**
Half baths

 **1**
Garages

Home data report

1179 Grand Meadow Way, Orcutt, CA, US



Room dimensions

Floor 1

Total: 2059 sqft Excluded: 665 sqft

#		Dimensions	sqft	Counted as living area
1	Bedroom	10'5" x 10'11"	113 sq. ft	Yes
2	Living Room	12'5" x 12'10"	165 sq. ft	Yes
3	Dining Area	12'6" x 8'10"	110 sq. ft	Yes
4	Bedroom	10'5" x 12'2"	127 sq. ft	Yes
5	Garage	20'4" x 32'9"	654 sq. ft	No
6	Laundry	7'5" x 8'3"	61 sq. ft	Yes
7	Bath	3'5" x 6'10"	24 sq. ft	Yes
8	Primary Bath	9'8" x 16'6"	123 sq. ft	Yes
9	Primary Bedroom	14'11" x 23'3"	282 sq. ft	Yes
10	Breakfast Nook	10'2" x 11'6"	104 sq. ft	Yes
11	Family Room	19'7" x 20'4"	303 sq. ft	Yes

Home data report

1179 Grand Meadow Way,Orcutt,CA,US

#		Dimensions	sqft	Counted as living area
12	Bath	4'11" x 6'5"	32 sq. ft	Yes
13	Bath	9'8" x 5'0"	48 sq. ft	Yes
14	Foyer	7'1" x 13'8"	91 sq. ft	Yes
15	Hall	15'2" x 11'10"	105 sq. ft	Yes
16	W.I.C.	9'8" x 6'4"	61 sq. ft	Yes
17	Kitchen	19'6" x 8'10"	179 sq. ft	Yes

1 Floor 1 - Bedroom



Dimensions: 10'5" x 10'11"
Area: 113 sq. ft
Counted as living area: Yes

Heated: Yes
Finished: Yes
Enclosed: Yes
Contiguous: Yes
Permitted: Yes
Wet space: No
Addition: No
Conversion: No

2 Floor 1 - Living Room



Dimensions: 12'5" x 12'10"
Area: 165 sq. ft
Counted as living area: Yes

Heated: Yes
Finished: Yes
Enclosed: Yes
Contiguous: Yes
Permitted: Yes
Wet space: No
Addition: No
Conversion: No

3 Floor 1 - Dining Area



Dimensions: 12'6" x 8'10"
Area: 110 sq. ft
Counted as living area: Yes

Heated: Yes
Finished: Yes
Enclosed: Yes
Contiguous: Yes
Permitted: Yes
Wet space: No
Addition: No
Conversion: No

4 Floor 1 - Bedroom



Dimensions: 10'5" x 12'2"
Area: 127 sq. ft
Counted as living area: Yes

Heated: Yes
Finished: Yes
Enclosed: Yes
Contiguous: Yes
Permitted: Yes
Wet space: No
Addition: No
Conversion: No

5 Floor 1 - Garage



Dimensions: 20'4" x 32'9"
Area: 654 sq. ft
Counted as living area: No

Heated: No
Finished: No
Enclosed: Yes
Contiguous: Yes
Permitted: Yes
Wet space: No
Addition: No
Conversion: No

6 Floor 1 - Laundry



Dimensions: 7'5" x 8'3"
Area: 61 sq. ft
Counted as living area: Yes

Heated: Yes
Finished: Yes
Enclosed: Yes
Contiguous: Yes
Permitted: Yes
Wet space: No
Addition: No
Conversion: No

7 Floor 1 - Bath



Dimensions: 3'5" x 6'10"
Area: 24 sq. ft
Counted as living area: Yes

Heated: Yes
Finished: Yes
Enclosed: Yes
Contiguous: Yes
Permitted: Yes
Wet space: Yes
Addition: No
Conversion: No

8 Floor 1 - Primary Bath



Dimensions: 9'8" x 16'6"
Area: 123 sq. ft
Counted as living area: Yes

Heated: Yes
Finished: Yes
Enclosed: Yes
Contiguous: Yes
Permitted: Yes
Wet space: Yes
Addition: No
Conversion: No

9 Floor 1 - Primary Bedroom



Dimensions: 14'11" x 23'3"
Area: 282 sq. ft
Counted as living area: Yes

Heated: Yes
Finished: Yes
Enclosed: Yes
Contiguous: Yes
Permitted: Yes
Wet space: No
Addition: No
Conversion: No

10 Floor 1 - Breakfast Nook



Dimensions: 10'2" x 11'6"
Area: 104 sq. ft
Counted as living area: Yes

Heated: Yes
Finished: Yes
Enclosed: Yes
Contiguous: Yes
Permitted: Yes
Wet space: No
Addition: No
Conversion: No

11 Floor 1 - Family Room



Dimensions: 19'7" x 20'4"
Area: 303 sq. ft
Counted as living area: Yes

Heated: Yes
Finished: Yes
Enclosed: Yes
Contiguous: Yes
Permitted: Yes
Wet space: No
Addition: No
Conversion: No

12 Floor 1 - Bath



Dimensions: 4'11" x 6'5"
Area: 32 sq. ft
Counted as living area: Yes

Heated: Yes
Finished: Yes
Enclosed: Yes
Contiguous: Yes
Permitted: Yes
Wet space: Yes
Addition: No
Conversion: No

13 Floor 1 - Bath



Dimensions: 9'8" x 5'0"
Area: 48 sq. ft
Counted as living area: Yes

Heated: Yes
Finished: Yes
Enclosed: Yes
Contiguous: Yes
Permitted: Yes
Wet space: Yes
Addition: No
Conversion: No

14 Floor 1 - Foyer



Dimensions: 7'1" x 13'8"
Area: 91 sq. ft
Counted as living area: Yes

Heated: Yes
Finished: Yes
Enclosed: Yes
Contiguous: Yes
Permitted: Yes
Wet space: No
Addition: No
Conversion: No

15 Floor 1 - Hall



Dimensions: 15'2" x 11'10"
Area: 105 sq. ft
Counted as living area: Yes

Heated: Yes
Finished: Yes
Enclosed: Yes
Contiguous: Yes
Permitted: Yes
Wet space: No
Addition: No
Conversion: No

16 Floor 1 - W.I.C.



Dimensions: 9'8" x 6'4"
Area: 61 sq. ft
Counted as living area: Yes

Heated: Yes
Finished: Yes
Enclosed: Yes
Contiguous: Yes
Permitted: Yes
Wet space: No
Addition: No
Conversion: No

17 Floor 1 - Kitchen



Dimensions: 19'6" x 8'10"
Area: 179 sq. ft
Counted as living area: Yes

Heated: Yes
Finished: Yes
Enclosed: Yes
Contiguous: Yes
Permitted: Yes
Wet space: No
Addition: No
Conversion: No