

Home data report

16694 Miners Way, Broomfield, CO, US



Total Area: 2836 sq. ft

Basement: 672 sq. ft, 1st Floor: 1069 sq. ft, 2nd Floor: 1095 sq. ft

Excluded: Utility 40 sq. ft, Storage 294 sq. ft, Garage 432 sq. ft, Walls: 263 sq. ft

Property summary

 **3** Floors

 **4** Bedrooms

 **3** Bathrooms

Home data report

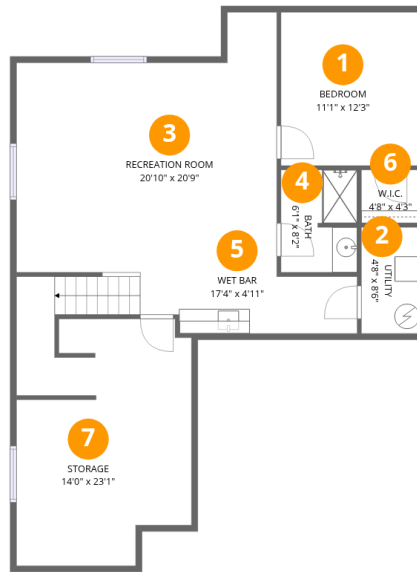
16694 Miners Way, Broomfield, CO, US



1
Half baths



1
Garages



Room dimensions

Floor 1 Below grade

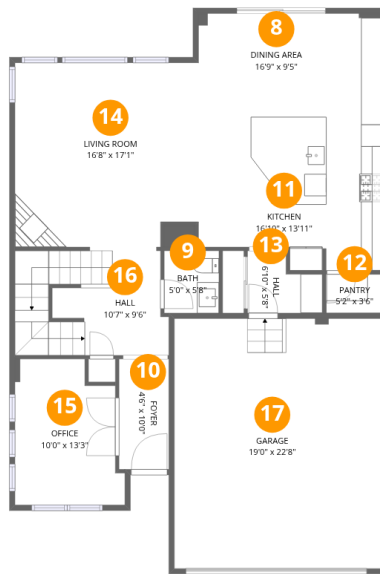
Total:672sqft

Excluded: 334sqft

| # | | Dimensions | sqft | Counted as living area |
|---|-----------------|----------------|------------|------------------------|
| 1 | Bedroom | 11'1" x 12'3" | 136 sq. ft | Yes |
| 2 | Utility | 4'8" x 8'6" | 40 sq. ft | No |
| 3 | Recreation Room | 20'10" x 20'9" | 432 sq. ft | Yes |
| 4 | Bath | 6'1" x 8'2" | 50 sq. ft | Yes |
| 5 | Wet Bar | 17'4" x 4'11" | 85 sq. ft | Yes |
| 6 | W.I.C. | 4'8" x 4'3" | 20 sq. ft | Yes |
| 7 | Storage | 14'0" x 23'1" | 323 sq. ft | No |

Home data report

16694 Miners Way, Broomfield, CO, US



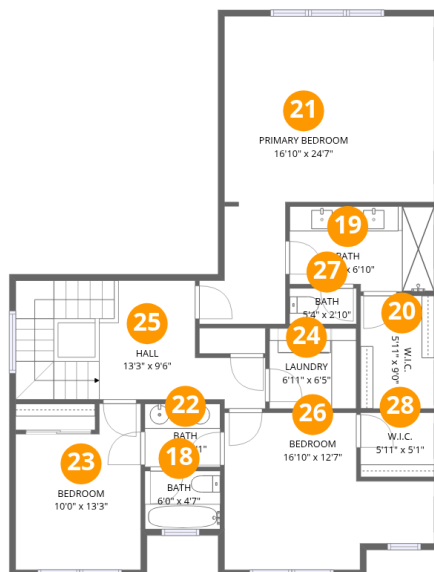
Room dimensions

Floor 2

Total: 1069 sqft

Excluded: 432 sqft

| # | | Dimensions | sqft | Counted as living area |
|----|-------------|-----------------|------------|------------------------|
| 8 | Dining Area | 16'9" x 9'5" | 158 sq. ft | Yes |
| 9 | Bath | 5'0" x 5'8" | 28 sq. ft | Yes |
| 10 | Foyer | 4'6" x 10'0" | 45 sq. ft | Yes |
| 11 | Kitchen | 16'10" x 13'11" | 234 sq. ft | Yes |
| 12 | Pantry | 5'2" x 3'6" | 18 sq. ft | Yes |
| 13 | Hall | 6'10" x 5'8" | 39 sq. ft | Yes |
| 14 | Living Room | 16'8" x 17'1" | 284 sq. ft | Yes |
| 15 | Office | 10'0" x 13'3" | 133 sq. ft | Yes |
| 16 | Hall | 10'7" x 9'6" | 101 sq. ft | Yes |
| 17 | Garage | 19'0" x 22'8" | 431 sq. ft | No |



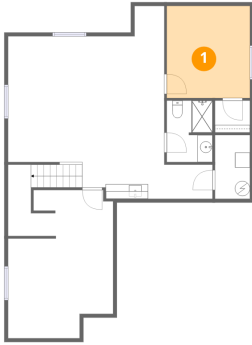
Room dimensions

Floor 3

Total: 1095 sqft Excluded: 0 sqft

| # | | Dimensions | sqft | Counted as living area |
|----|-----------------|----------------|------------|------------------------|
| 18 | Bath | 6'0" x 4'7" | 28 sq. ft | Yes |
| 19 | Bath | 11'7" x 6'10" | 79 sq. ft | Yes |
| 20 | W.I.C. | 5'11" x 9'0" | 53 sq. ft | Yes |
| 21 | Primary Bedroom | 16'10" x 24'7" | 413 sq. ft | Yes |
| 22 | Bath | 6'0" x 5'1" | 30 sq. ft | Yes |
| 23 | Bedroom | 10'0" x 13'3" | 132 sq. ft | Yes |
| 24 | Laundry | 6'11" x 6'5" | 44 sq. ft | Yes |
| 25 | Hall | 13'3" x 9'6" | 126 sq. ft | Yes |
| 26 | Bedroom | 16'10" x 12'7" | 211 sq. ft | Yes |
| 27 | Bath | 5'4" x 2'10" | 15 sq. ft | Yes |
| 28 | W.I.C. | 5'11" x 5'1" | 30 sq. ft | Yes |

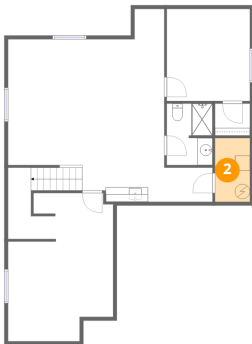
1 Floor 1 - Bedroom



Dimensions: 11'1" x 12'3"
Area: 136 sq. ft
Counted as living area: Yes

Heated: Yes
Finished: Yes
Enclosed: Yes
Contiguous: Yes
Permitted: Yes
Wet space: No
Addition: No
Conversion: No

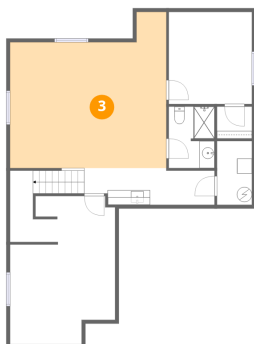
2 Floor 1 - Utility



Dimensions: 4'8" x 8'6"
Area: 40 sq. ft
Counted as living area: No

Heated: Yes
Finished: No
Enclosed: Yes
Contiguous: Yes
Permitted: Yes
Wet space: No
Addition: No
Conversion: No

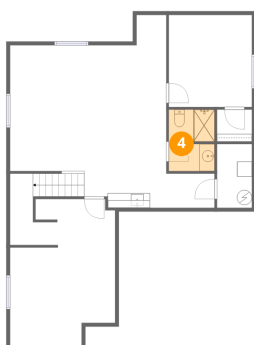
3 Floor 1 - Recreation Room



Dimensions: 20'10" x 20'9"
Area: 432 sq. ft
Counted as living area: Yes

Heated: Yes
Finished: Yes
Enclosed: Yes
Contiguous: Yes
Permitted: Yes
Wet space: No
Addition: No
Conversion: No

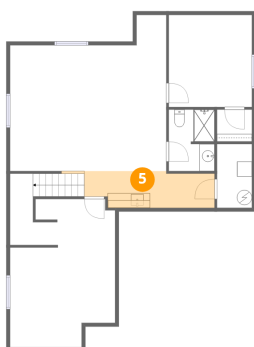
4 Floor 1 - Bath



Dimensions: 6'1" x 8'2"
Area: 50 sq. ft
Counted as living area: Yes

Heated: Yes
Finished: Yes
Enclosed: Yes
Contiguous: Yes
Permitted: Yes
Wet space: Yes
Addition: No
Conversion: No

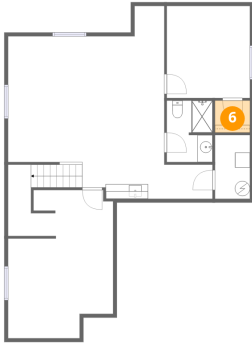
5 Floor 1 - Wet Bar



Dimensions: 17'4" x 4'11"
Area: 85 sq. ft
Counted as living area: Yes

Heated: Yes
Finished: Yes
Enclosed: Yes
Contiguous: Yes
Permitted: Yes
Wet space: No
Addition: No
Conversion: No

6 Floor 1 - W.I.C.



Dimensions: 4'8" x 4'3"
Area: 20 sq. ft
Counted as living area: Yes

Heated: Yes
Finished: Yes
Enclosed: Yes
Contiguous: Yes
Permitted: Yes
Wet space: No
Addition: No
Conversion: No

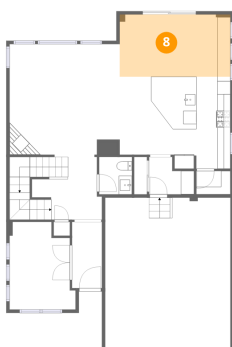
7 Floor 1 - Storage



Dimensions: 14'0" x 23'1"
Area: 323 sq. ft
Counted as living area: No

Heated: No
Finished: No
Enclosed: No
Contiguous: Yes
Permitted: Yes
Wet space: No
Addition: No
Conversion: No

8 Floor 2 - Dining Area



Dimensions: 16'9" x 9'5"
Area: 158 sq. ft
Counted as living area: Yes

Heated: Yes
Finished: Yes
Enclosed: Yes
Contiguous: Yes
Permitted: Yes
Wet space: No
Addition: No
Conversion: No

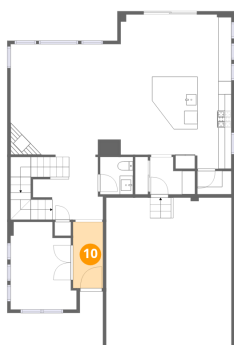
9 Floor 2 - Bath



Dimensions: 5'0" x 5'8"
Area: 28 sq. ft
Counted as living area: Yes

Heated: Yes
Finished: Yes
Enclosed: Yes
Contiguous: Yes
Permitted: Yes
Wet space: Yes
Addition: No
Conversion: No

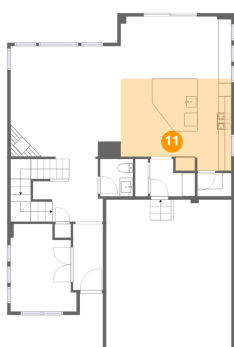
10 Floor 2 - Foyer



Dimensions: 4'6" x 10'0"
Area: 45 sq. ft
Counted as living area: Yes

Heated: Yes
Finished: Yes
Enclosed: Yes
Contiguous: Yes
Permitted: Yes
Wet space: No
Addition: No
Conversion: No

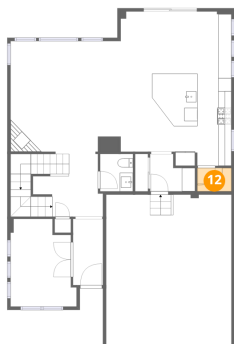
11 Floor 2 - Kitchen



Dimensions: 16'10" x 13'11"
Area: 234 sq. ft
Counted as living area: Yes

Heated: Yes
Finished: Yes
Enclosed: Yes
Contiguous: Yes
Permitted: Yes
Wet space: No
Addition: No
Conversion: No

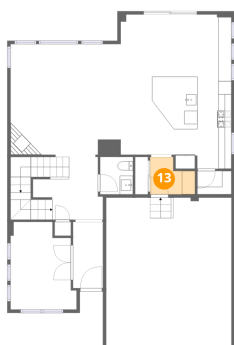
12 Floor 2 - Pantry



Dimensions: 5'2" x 3'6"
Area: 18 sq. ft
Counted as living area: Yes

Heated: Yes
Finished: Yes
Enclosed: Yes
Contiguous: Yes
Permitted: Yes
Wet space: No
Addition: No
Conversion: No

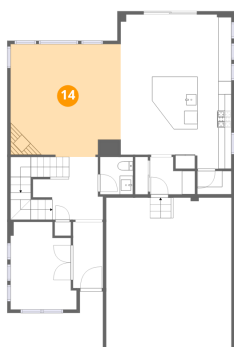
13 Floor 2 - Hall



Dimensions: 6'10" x 5'8"
Area: 39 sq. ft
Counted as living area: Yes

Heated: Yes
Finished: Yes
Enclosed: Yes
Contiguous: Yes
Permitted: Yes
Wet space: No
Addition: No
Conversion: No

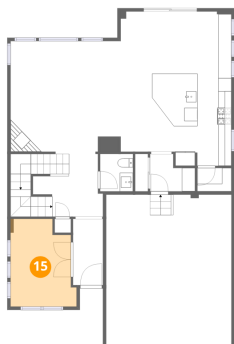
14 Floor 2 - Living Room



Dimensions: 16'8" x 17'1"
Area: 284 sq. ft
Counted as living area: Yes

Heated: Yes
Finished: Yes
Enclosed: Yes
Contiguous: Yes
Permitted: Yes
Wet space: No
Addition: No
Conversion: No

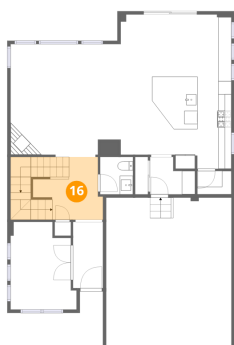
15 Floor 2 - Office



Dimensions: 10'0" x 13'3"
Area: 133 sq. ft
Counted as living area: Yes

Heated: Yes
Finished: Yes
Enclosed: Yes
Contiguous: Yes
Permitted: Yes
Wet space: No
Addition: No
Conversion: No

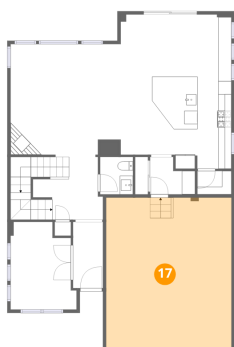
16 Floor 2 - Hall



Dimensions: 10'7" x 9'6"
Area: 101 sq. ft
Counted as living area: Yes

Heated: Yes
Finished: Yes
Enclosed: Yes
Contiguous: Yes
Permitted: Yes
Wet space: No
Addition: No
Conversion: No

17 Floor 2 - Garage



Dimensions: 19'0" x 22'8"
Area: 431 sq. ft
Counted as living area: No

Heated: No
Finished: No
Enclosed: Yes
Contiguous: Yes
Permitted: Yes
Wet space: No
Addition: No
Conversion: No

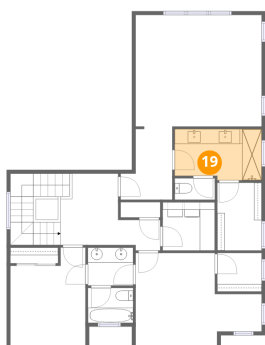
18 Floor 3 - Bath



Dimensions: 6'0" x 4'7"
Area: 28 sq. ft
Counted as living area: Yes

Heated: Yes
Finished: Yes
Enclosed: Yes
Contiguous: Yes
Permitted: Yes
Wet space: Yes
Addition: No
Conversion: No

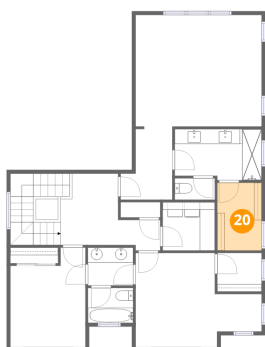
19 Floor 3 - Bath



Dimensions: 11'7" x 6'10"
Area: 79 sq. ft
Counted as living area: Yes

Heated: Yes
Finished: Yes
Enclosed: Yes
Contiguous: Yes
Permitted: Yes
Wet space: Yes
Addition: No
Conversion: No

20 Floor 3 - W.I.C.



Dimensions: 5'11" x 9'0"
Area: 53 sq. ft
Counted as living area: Yes

Heated: Yes
Finished: Yes
Enclosed: Yes
Contiguous: Yes
Permitted: Yes
Wet space: No
Addition: No
Conversion: No

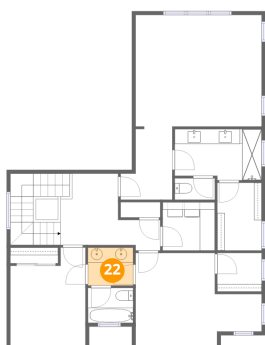
21 Floor 3 - Primary Bedroom



Dimensions: 16'10" x 24'7"
Area: 413 sq. ft
Counted as living area: Yes

Heated: Yes
Finished: Yes
Enclosed: Yes
Contiguous: Yes
Permitted: Yes
Wet space: No
Addition: No
Conversion: No

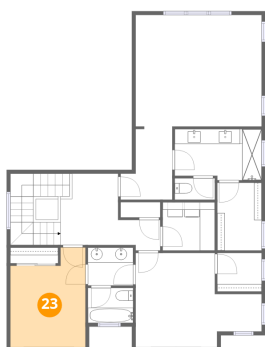
22 Floor 3 - Bath



Dimensions: 6'0" x 5'1"
Area: 30 sq. ft
Counted as living area: Yes

Heated: Yes
Finished: Yes
Enclosed: Yes
Contiguous: Yes
Permitted: Yes
Wet space: Yes
Addition: No
Conversion: No

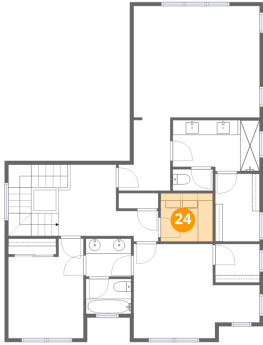
23 Floor 3 - Bedroom



Dimensions: 10'0" x 13'3"
Area: 132 sq. ft
Counted as living area: Yes

Heated: Yes
Finished: Yes
Enclosed: Yes
Contiguous: Yes
Permitted: Yes
Wet space: No
Addition: No
Conversion: No

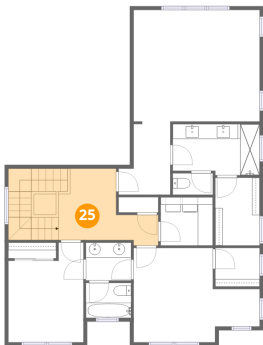
24 Floor 3 - Laundry



Dimensions: 6'11" x 6'5"
Area: 44 sq. ft
Counted as living area: Yes

Heated: Yes
Finished: Yes
Enclosed: Yes
Contiguous: Yes
Permitted: Yes
Wet space: No
Addition: No
Conversion: No

25 Floor 3 - Hall



Dimensions: 13'3" x 9'6"
Area: 126 sq. ft
Counted as living area: Yes

Heated: Yes
Finished: Yes
Enclosed: Yes
Contiguous: Yes
Permitted: Yes
Wet space: No
Addition: No
Conversion: No

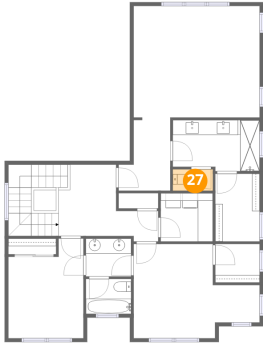
26 Floor 3 - Bedroom



Dimensions: 16'10" x 12'7"
Area: 211 sq. ft
Counted as living area: Yes

Heated: Yes
Finished: Yes
Enclosed: Yes
Contiguous: Yes
Permitted: Yes
Wet space: No
Addition: No
Conversion: No

27 Floor 3 - Bath



Dimensions: 5'4" x 2'10"
Area: 15 sq. ft
Counted as living area: Yes

Heated: Yes
Finished: Yes
Enclosed: Yes
Contiguous: Yes
Permitted: Yes
Wet space: Yes
Addition: No
Conversion: No

28 Floor 3 - W.I.C.



Dimensions: 5'11" x 5'1"
Area: 30 sq. ft
Counted as living area: Yes

Heated: Yes
Finished: Yes
Enclosed: Yes
Contiguous: Yes
Permitted: Yes
Wet space: No
Addition: No
Conversion: No