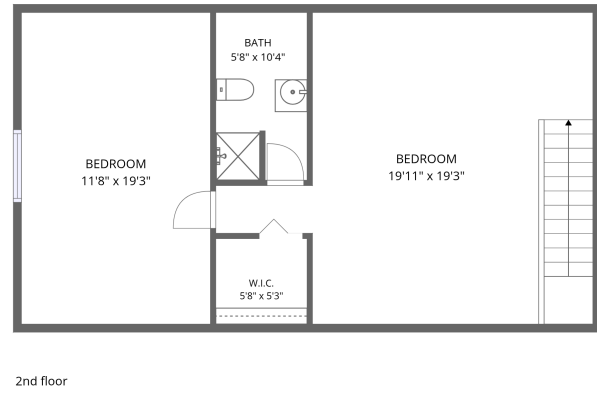
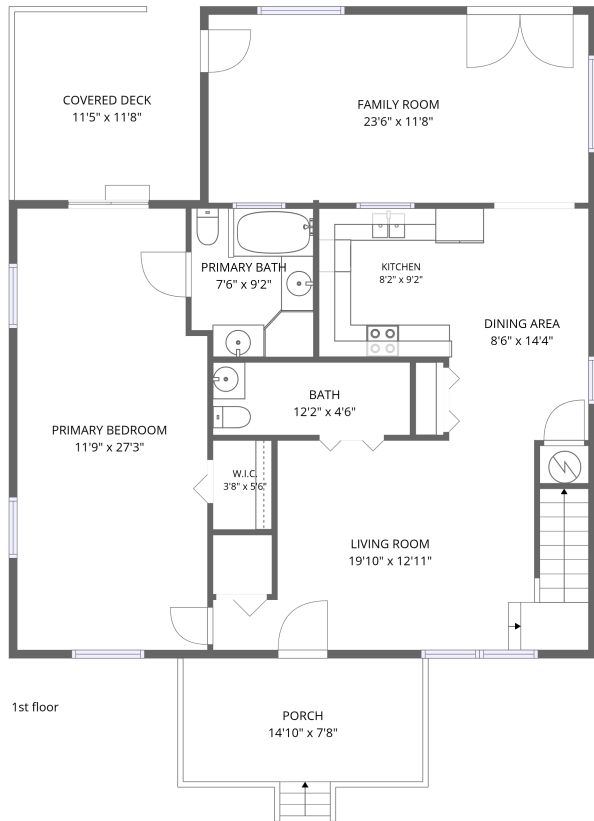


Home data report

144 Greenhaven Circle, Dickson, Tennessee, United States




Total Area: 1923 sq. ft

1st Floor: 1244 sq. ft, 2nd Floor: 679 sq. ft

Excluded: Porch 120 sq. ft, Covered deck 134 sq. ft, Walls: 132 sq. ft

Property summary

 **2** Floors

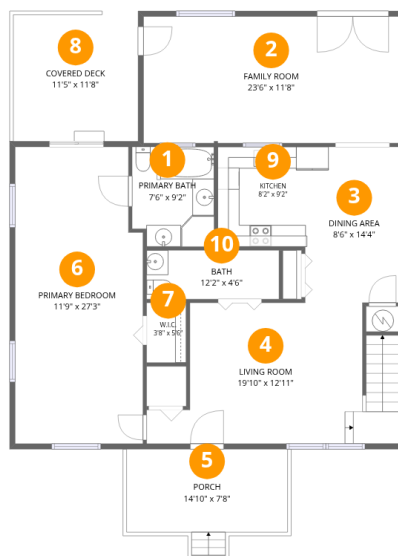
 **3** Bedrooms

 **2** Bathrooms

 **1** Half baths

Home data report

144 Greenhaven Circle, Dickson, Tennessee, United States



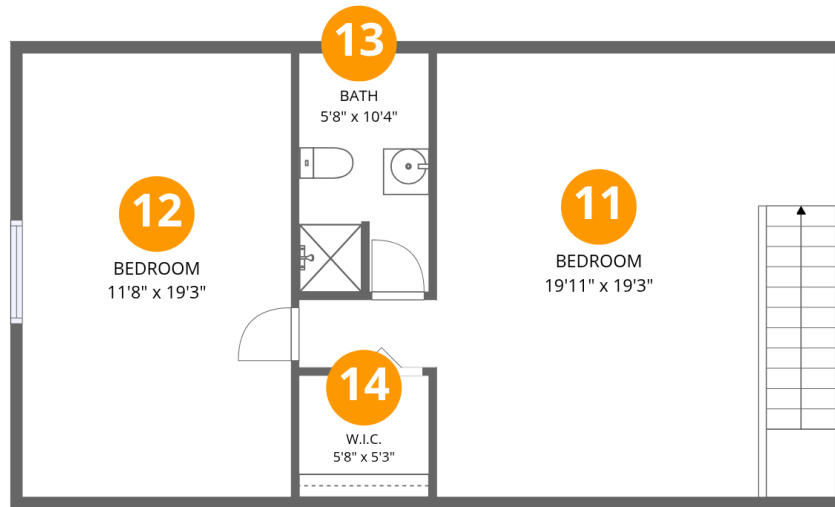
Room dimensions

Floor 1

Total:1244sqft Excluded: 254sqft

#		Dimensions	sqft	Counted as living area
1	Primary Bath	7'6" x 9'2"	67 sq. ft	Yes
2	Family Room	23'6" x 11'8"	273 sq. ft	Yes
3	Dining Area	8'6" x 14'4"	121 sq. ft	Yes
4	Living Room	19'10" x 12'11"	250 sq. ft	Yes
5	Porch	14'10" x 7'8"	120 sq. ft	No
6	Primary Bedroom	11'9" x 27'3"	310 sq. ft	Yes
7	W.I.C.	3'8" x 5'6"	20 sq. ft	Yes
8	Covered Deck	11'5" x 11'8"	134 sq. ft	No
9	Kitchen	8'2" x 9'2"	76 sq. ft	Yes
10	Bath	12'2" x 4'6"	55 sq. ft	Yes

144 Greenhaven Circle, Dickson, Tennessee, United States



Room dimensions

Floor 2

Total: 679 sqft Excluded: 0 sqft

#		Dimensions	sqft	Counted as living area
11	Bedroom	19'11" x 19'3"	351 sq. ft	Yes
12	Bedroom	11'8" x 19'3"	225 sq. ft	Yes
13	Bath	5'8" x 10'4"	57 sq. ft	Yes
14	W.I.C.	5'8" x 5'3"	30 sq. ft	Yes

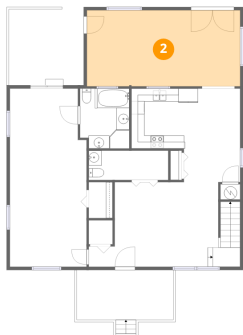
1 Floor 1 - Primary Bath



Dimensions: 7'6" x 9'2"
Area: 67 sq. ft
Counted as living area: Yes

Heated: Yes
Finished: Yes
Enclosed: Yes
Contiguous: Yes
Permitted: Yes
Wet space: Yes
Addition: No
Conversion: No

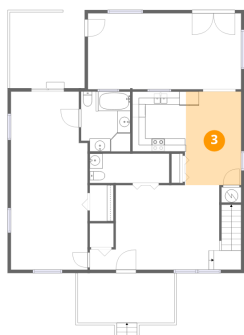
2 Floor 1 - Family Room



Dimensions: 23'6" x 11'8"
Area: 273 sq. ft
Counted as living area: Yes

Heated: Yes
Finished: Yes
Enclosed: Yes
Contiguous: Yes
Permitted: Yes
Wet space: No
Addition: No
Conversion: No

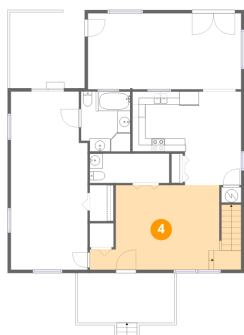
3 Floor 1 - Dining Area



Dimensions: 8'6" x 14'4"
Area: 121 sq. ft
Counted as living area: Yes

Heated: Yes
Finished: Yes
Enclosed: Yes
Contiguous: Yes
Permitted: Yes
Wet space: No
Addition: No
Conversion: No

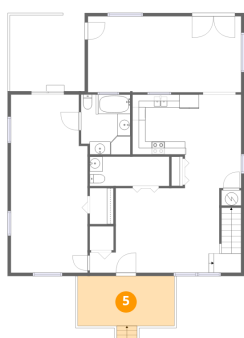
4 Floor 1 - Living Room



Dimensions: 19'10" x 12'11"
Area: 250 sq. ft
Counted as living area: Yes

Heated: Yes
Finished: Yes
Enclosed: Yes
Contiguous: Yes
Permitted: Yes
Wet space: No
Addition: No
Conversion: No

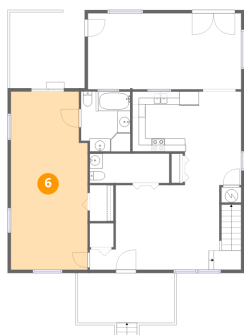
5 Floor 1 - Porch



Dimensions: 14'10" x 7'8"
Area: 120 sq. ft
Counted as living area: No

Heated: No
Finished: No
Enclosed: No
Contiguous: Yes
Permitted: Yes
Wet space: No
Addition: No
Conversion: No

6 Floor 1 - Primary Bedroom



Dimensions: 11'9" x 27'3"
Area: 310 sq. ft
Counted as living area: Yes

Heated: Yes
Finished: Yes
Enclosed: Yes
Contiguous: Yes
Permitted: Yes
Wet space: No
Addition: No
Conversion: No

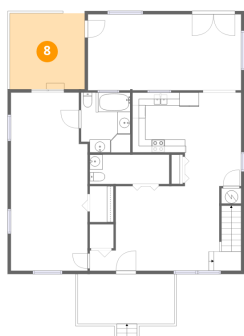
7 Floor 1 - W.I.C.



Dimensions: 3'8" x 5'6"
Area: 20 sq. ft
Counted as living area: Yes

Heated: Yes
Finished: Yes
Enclosed: Yes
Contiguous: Yes
Permitted: Yes
Wet space: No
Addition: No
Conversion: No

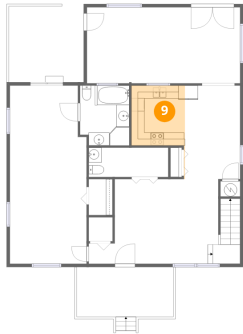
8 Floor 1 - Covered Deck



Dimensions: 11'5" x 11'8"
Area: 134 sq. ft
Counted as living area: No

Heated: No
Finished: No
Enclosed: No
Contiguous: Yes
Permitted: Yes
Wet space: No
Addition: No
Conversion: No

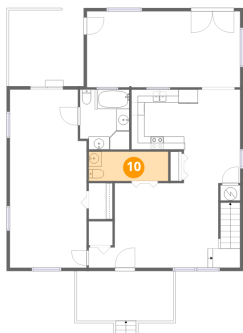
9 Floor 1 - Kitchen



Dimensions: 8'2" x 9'2"
Area: 76 sq. ft
Counted as living area: Yes

Heated: Yes
Finished: Yes
Enclosed: Yes
Contiguous: Yes
Permitted: Yes
Wet space: No
Addition: No
Conversion: No

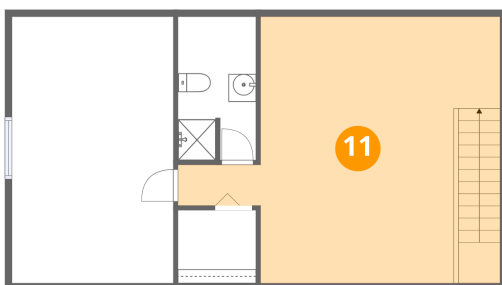
10 Floor 1 - Bath



Dimensions: 12'2" x 4'6"
Area: 55 sq. ft
Counted as living area: Yes

Heated: Yes
Finished: Yes
Enclosed: Yes
Contiguous: Yes
Permitted: Yes
Wet space: Yes
Addition: No
Conversion: No

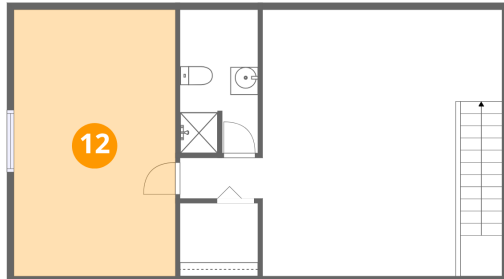
11 Floor 2 - Bedroom



Dimensions: 19'11" x 19'3"
Area: 351 sq. ft
Counted as living area: Yes

Heated: Yes
Finished: Yes
Enclosed: Yes
Contiguous: Yes
Permitted: Yes
Wet space: No
Addition: No
Conversion: No

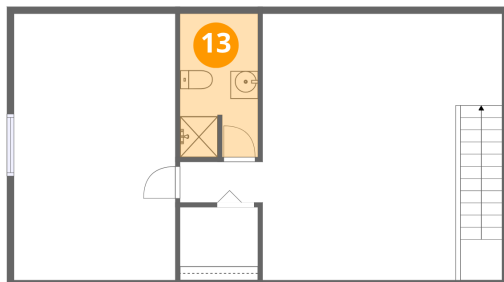
12 Floor 2 - Bedroom



Dimensions: 11'8" x 19'3"
Area: 225 sq. ft
Counted as living area: Yes

Heated: Yes
Finished: Yes
Enclosed: Yes
Contiguous: Yes
Permitted: Yes
Wet space: No
Addition: No
Conversion: No

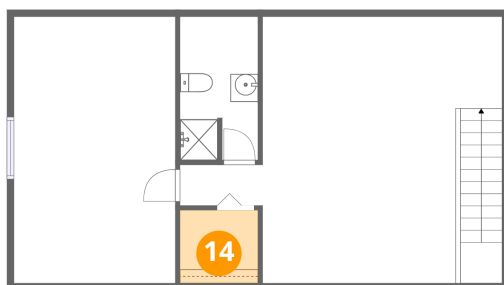
13 Floor 2 - Bath



Dimensions: 5'8" x 10'4"
Area: 57 sq. ft
Counted as living area: Yes

Heated: Yes
Finished: Yes
Enclosed: Yes
Contiguous: Yes
Permitted: Yes
Wet space: Yes
Addition: No
Conversion: No

14 Floor 2 - W.I.C.



Dimensions: 5'8" x 5'3"
Area: 30 sq. ft
Counted as living area: Yes

Heated: Yes
Finished: Yes
Enclosed: Yes
Contiguous: Yes
Permitted: Yes
Wet space: No
Addition: No
Conversion: No