

Home data report

3621 Pheasant Lane, Endwell, Endicott, Broome County, New York, United States, 13760



Total Area: 2938 sq. ft

1st Floor: 1216 sq. ft, 2nd Floor: 1722 sq. ft

Excluded: Room 37 sq. ft, Garage 447 sq. ft, Fireplace 30 sq. ft, Walls: 198 sq. ft

Property summary

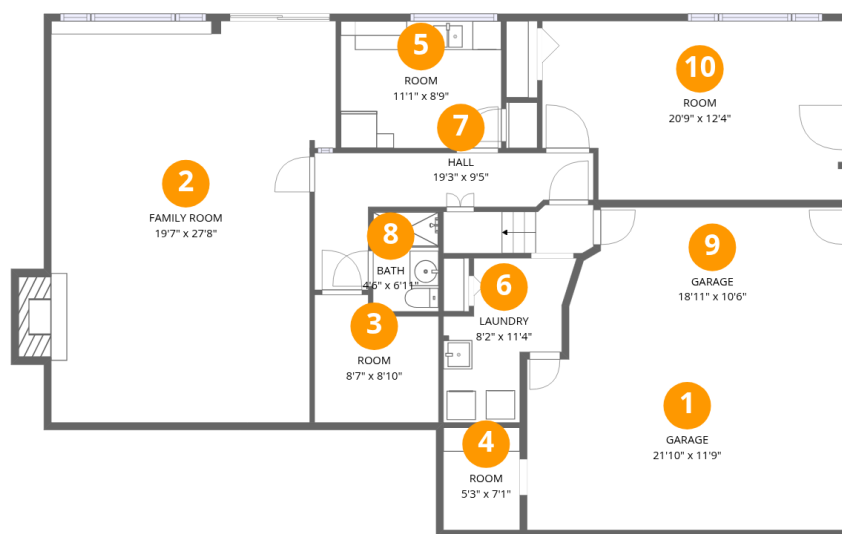


Scan captured on Fri, 17 Apr 2026 22:32:26 GMT

FLOOR PLANS CREATED BY LENS TO LISTINGS MEDIA. MEASUREMENTS DEEMED HIGHLY RELIABLE BUT NOT GUARANTEED.

Home data report

3621 Pheasant Lane, Endwell, Endicott, Broome County, New York, United States, 13760



Room dimensions

Floor 1

Total:1216sqft Excluded: 499sqft

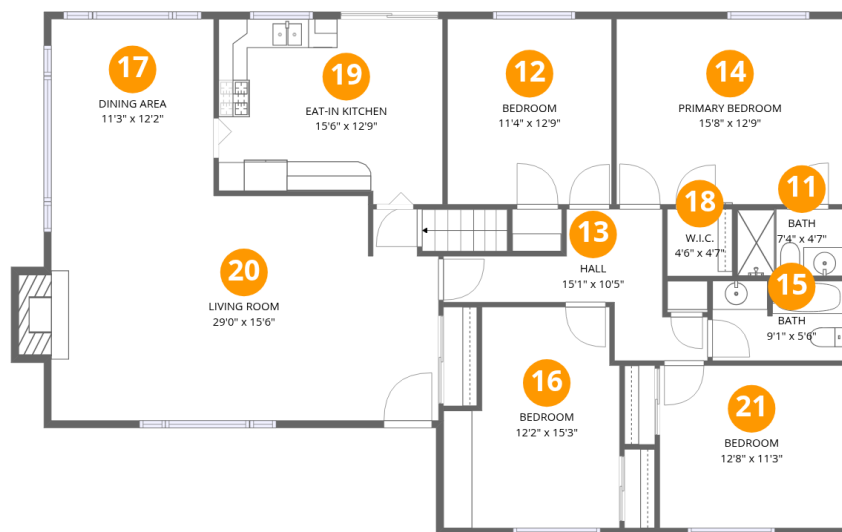
#		Dimensions	sqft	Counted as living area
1	Garage	21'10" x 11'9"	257 sq. ft	No
2	Family Room	19'7" x 27'8"	542 sq. ft	Yes
3	Room	8'7" x 8'10"	75 sq. ft	Yes
4	Room	5'3" x 7'1"	37 sq. ft	No
5	Room	11'1" x 8'9"	97 sq. ft	Yes
6	Laundry	8'2" x 11'4"	93 sq. ft	Yes
7	Hall	19'3" x 9'5"	182 sq. ft	Yes
8	Bath	4'6" x 6'11"	31 sq. ft	Yes
9	Garage	18'11" x 10'6"	199 sq. ft	No
10	Room	20'9" x 12'4"	256 sq. ft	Yes

Scan captured on Fri, 17 Apr 2026 22:32:26 GMT

FLOOR PLANS CREATED BY LENS TO LISTINGS MEDIA. MEASUREMENTS DEEMED HIGHLY RELIABLE BUT NOT GUARANTEED.

Home data report

3621 Pheasant Lane, Endwell, Endicott, Broome County, New York, United States, 13760



Room dimensions

Floor 2

Total:1722sqft Excluded: 15sqft

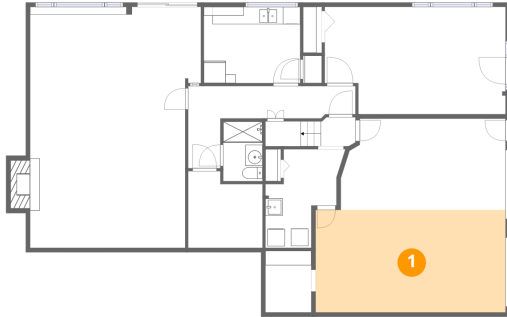
#		Dimensions	sqft	Counted as living area
11	Bath	7'4" x 4'7"	34 sq. ft	Yes
12	Bedroom	11'4" x 12'9"	145 sq. ft	Yes
13	Hall	15'1" x 10'5"	158 sq. ft	Yes
14	Primary Bedroom	15'8" x 12'9"	200 sq. ft	Yes
15	Bath	9'1" x 5'6"	50 sq. ft	Yes
16	Bedroom	12'2" x 15'3"	185 sq. ft	Yes
17	Dining Area	11'3" x 12'2"	137 sq. ft	Yes
18	W.I.C.	4'6" x 4'7"	21 sq. ft	Yes
19	Eat-in Kitchen	15'6" x 12'9"	197 sq. ft	Yes
20	Living Room	29'0" x 15'6"	449 sq. ft	Yes
21	Bedroom	12'8" x 11'3"	142 sq. ft	Yes

Scan captured on Fri, 17 Apr 2026 22:32:26 GMT

FLOOR PLANS CREATED BY LENS TO LISTINGS MEDIA. MEASUREMENTS DEEMED HIGHLY RELIABLE BUT NOT GUARANTEED.

3621 Pheasant Lane, Endwell, Endicott, Broome County, New York, United States, 13760

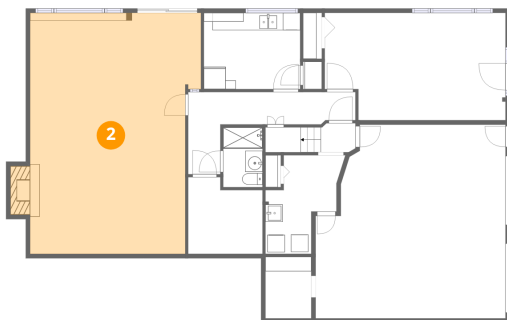
1 Floor 1 - Garage



Dimensions: 21'10" x 11'9"
Area: 257 sq. ft
Counted as living area: No

Heated: No
Finished: No
Enclosed: Yes
Contiguous: Yes
Permitted: Yes
Wet space: No
Addition: No
Conversion: No

2 Floor 1 - Family Room

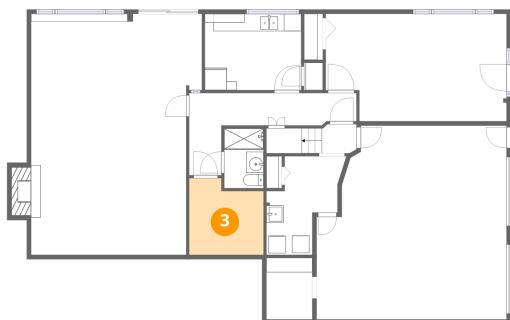


Dimensions: 19'7" x 27'8"
Area: 542 sq. ft
Counted as living area: Yes

Heated: Yes
Finished: Yes
Enclosed: Yes
Contiguous: Yes
Permitted: Yes
Wet space: No
Addition: No
Conversion: No

3621 Pheasant Lane, Endwell, Endicott, Broome County, New York, United States, 13760

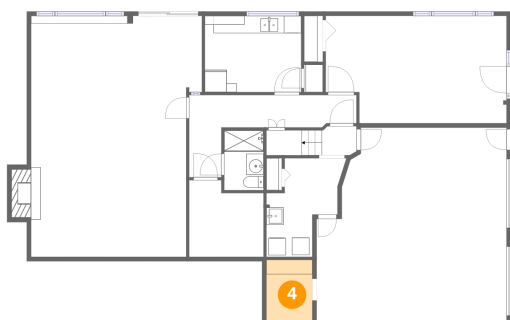
3 Floor 1 - Room



Dimensions: 8'7" x 8'10"
Area: 75 sq. ft
Counted as living area: Yes

Heated: Yes
Finished: Yes
Enclosed: Yes
Contiguous: Yes
Permitted: Yes
Wet space: No
Addition: No
Conversion: No

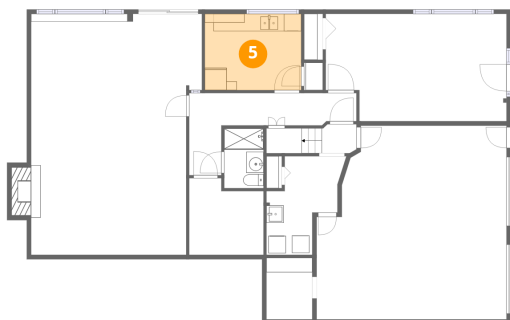
4 Floor 1 - Room



Dimensions: 5'3" x 7'1"
Area: 37 sq. ft
Counted as living area: No

Heated: Yes
Finished: No
Enclosed: Yes
Contiguous: Yes
Permitted: Yes
Wet space: No
Addition: No
Conversion: No

5 Floor 1 - Room

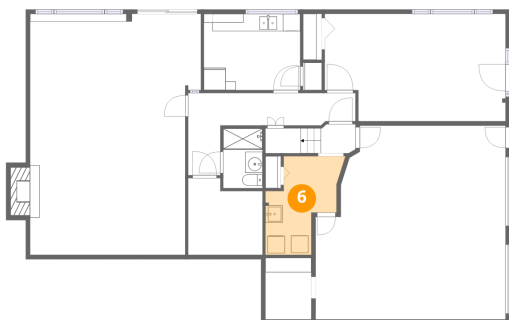


Dimensions: 11'1" x 8'9"
Area: 97 sq. ft
Counted as living area: Yes

Heated: Yes
Finished: Yes
Enclosed: Yes
Contiguous: Yes
Permitted: Yes
Wet space: No
Addition: No
Conversion: No

3621 Pheasant Lane, Endwell, Endicott, Broome County, New York, United States, 13760

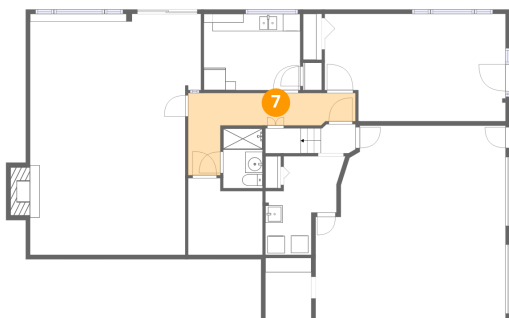
6 Floor 1 - Laundry



Dimensions: 8'2" x 11'4"
Area: 93 sq. ft
Counted as living area: Yes

Heated: Yes
Finished: Yes
Enclosed: Yes
Contiguous: Yes
Permitted: Yes
Wet space: No
Addition: No
Conversion: No

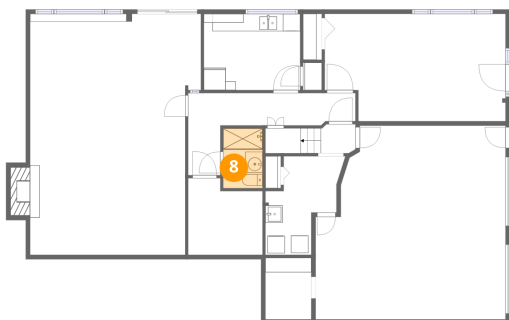
7 Floor 1 - Hall



Dimensions: 19'3" x 9'5"
Area: 182 sq. ft
Counted as living area: Yes

Heated: Yes
Finished: Yes
Enclosed: Yes
Contiguous: Yes
Permitted: Yes
Wet space: No
Addition: No
Conversion: No

8 Floor 1 - Bath

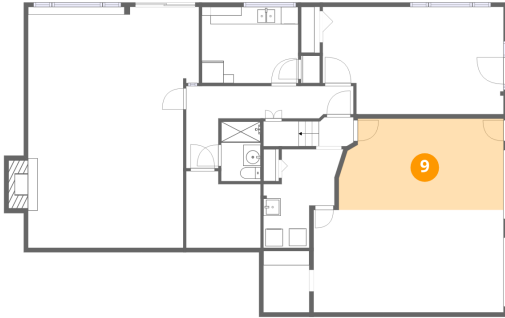


Dimensions: 4'6" x 6'11"
Area: 31 sq. ft
Counted as living area: Yes

Heated: Yes
Finished: Yes
Enclosed: Yes
Contiguous: Yes
Permitted: Yes
Wet space: Yes
Addition: No
Conversion: No

3621 Pheasant Lane, Endwell, Endicott, Broome County, New York, United States, 13760

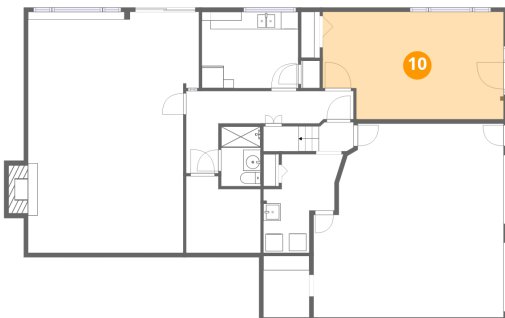
9 Floor 1 - Garage



Dimensions: 18'11" x 10'6"
Area: 199 sq. ft
Counted as living area: No

Heated: No
Finished: No
Enclosed: Yes
Contiguous: Yes
Permitted: Yes
Wet space: No
Addition: No
Conversion: No

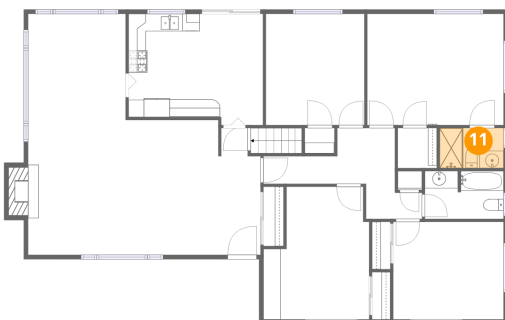
10 Floor 1 - Room



Dimensions: 20'9" x 12'4"
Area: 256 sq. ft
Counted as living area: Yes

Heated: Yes
Finished: Yes
Enclosed: Yes
Contiguous: Yes
Permitted: Yes
Wet space: No
Addition: No
Conversion: No

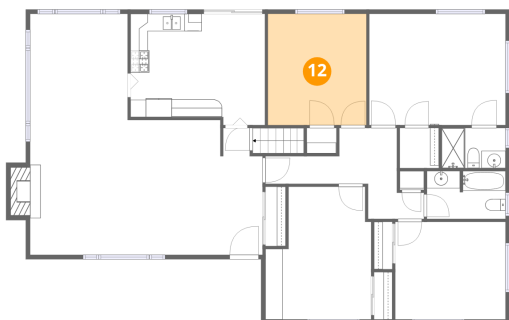
11 Floor 2 - Bath



Dimensions: 7'4" x 4'7"
Area: 34 sq. ft
Counted as living area: No

Heated: Yes
Finished: Yes
Enclosed: Yes
Contiguous: Yes
Permitted: Yes
Wet space: Yes
Addition: No
Conversion: No

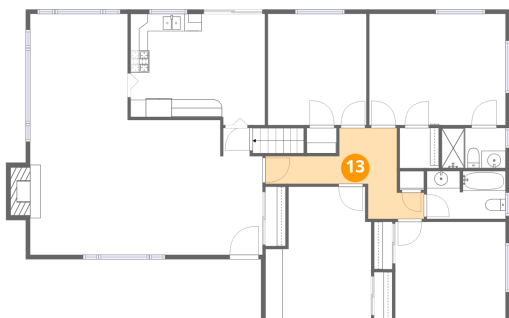
12 Floor 2 - Bedroom



Dimensions: 11'4" x 12'9"
Area: 145 sq. ft
Counted as living area: Yes

Heated: Yes
Finished: Yes
Enclosed: Yes
Contiguous: Yes
Permitted: Yes
Wet space: No
Addition: No
Conversion: No

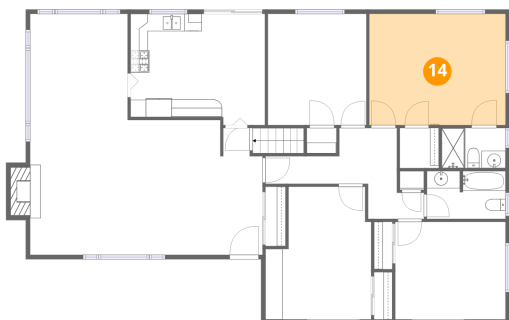
13 Floor 2 - Hall



Dimensions: 15'1" x 10'5"
Area: 158 sq. ft
Counted as living area: Yes

Heated: Yes
Finished: Yes
Enclosed: Yes
Contiguous: Yes
Permitted: Yes
Wet space: No
Addition: No
Conversion: No

14 Floor 2 - Primary Bedroom

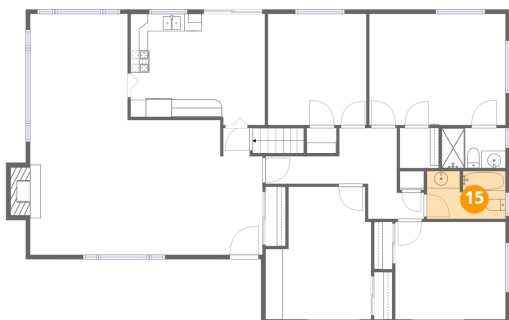


Dimensions: 15'8" x 12'9"
Area: 200 sq. ft
Counted as living area: Yes

Heated: Yes
Finished: Yes
Enclosed: Yes
Contiguous: Yes
Permitted: Yes
Wet space: No
Addition: No
Conversion: No

3621 Pheasant Lane, Endwell, Endicott, Broome County, New York, United States, 13760

15 Floor 2 - Bath



Dimensions: 9'1" x 5'6"
Area: 50 sq. ft
Counted as living area: Yes

Heated: Yes
Finished: Yes
Enclosed: Yes
Contiguous: Yes
Permitted: Yes
Wet space: Yes
Addition: No
Conversion: No

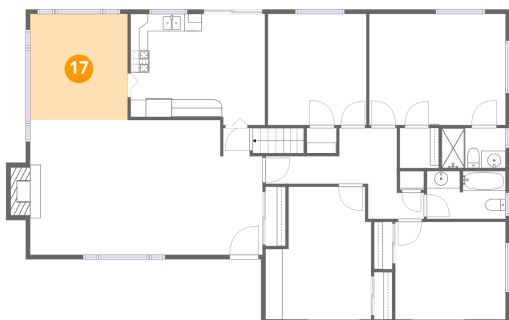
16 Floor 2 - Bedroom



Dimensions: 12'2" x 15'3"
Area: 185 sq. ft
Counted as living area: Yes

Heated: Yes
Finished: Yes
Enclosed: Yes
Contiguous: Yes
Permitted: Yes
Wet space: No
Addition: No
Conversion: No

17 Floor 2 - Dining Area



Dimensions: 11'3" x 12'2"
Area: 137 sq. ft
Counted as living area: Yes

Heated: Yes
Finished: Yes
Enclosed: Yes
Contiguous: Yes
Permitted: Yes
Wet space: No
Addition: No
Conversion: No

3621 Pheasant Lane, Endwell, Endicott, Broome County, New York, United States, 13760

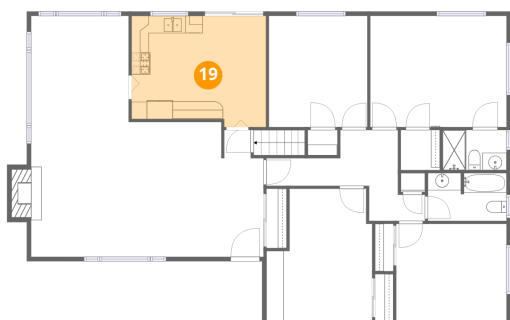
18 Floor 2 - W.I.C.



Dimensions: 4'6" x 4'7"
Area: 21 sq. ft
Counted as living area: Yes

Heated: Yes
Finished: Yes
Enclosed: Yes
Contiguous: Yes
Permitted: Yes
Wet space: No
Addition: No
Conversion: No

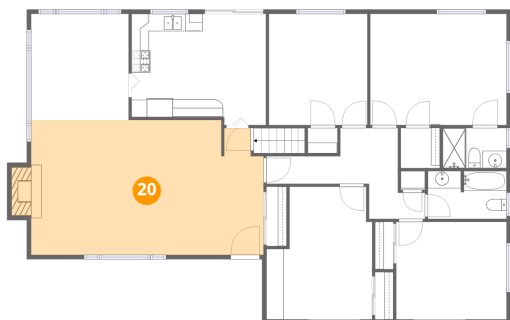
19 Floor 2 - Eat-in Kitchen



Dimensions: 15'6" x 12'9"
Area: 197 sq. ft
Counted as living area: Yes

Heated: Yes
Finished: Yes
Enclosed: Yes
Contiguous: Yes
Permitted: Yes
Wet space: No
Addition: No
Conversion: No

20 Floor 2 - Living Room



Dimensions: 29'0" x 15'6"
Area: 449 sq. ft
Counted as living area: Yes

Heated: Yes
Finished: Yes
Enclosed: Yes
Contiguous: Yes
Permitted: Yes
Wet space: No
Addition: No
Conversion: No

Home data report

3621 Pheasant Lane, Endwell, Endicott, Broome County, New York, United States, 13760

21 Floor 2 - Bedroom



Dimensions: 12'8" x 11'3"
Area: 142 sq. ft
Counted as living area: Yes

Heated: Yes
Finished: Yes
Enclosed: Yes
Contiguous: Yes
Permitted: Yes
Wet space: No
Addition: No
Conversion: No