

Home data report

3144 Country Club Road, Troutville, Virginia 24175, United States



Total Area: 2955 sq. ft

1st Floor: 2399 sq. ft, 2nd Floor: 556 sq. ft

Excluded: Screened porch 172 sq. ft, Porch 236 sq. ft, Deck 663 sq. ft, Patio 695 sq. ft, Room 260 sq. ft, Walls: 197 sq. ft

Property summary

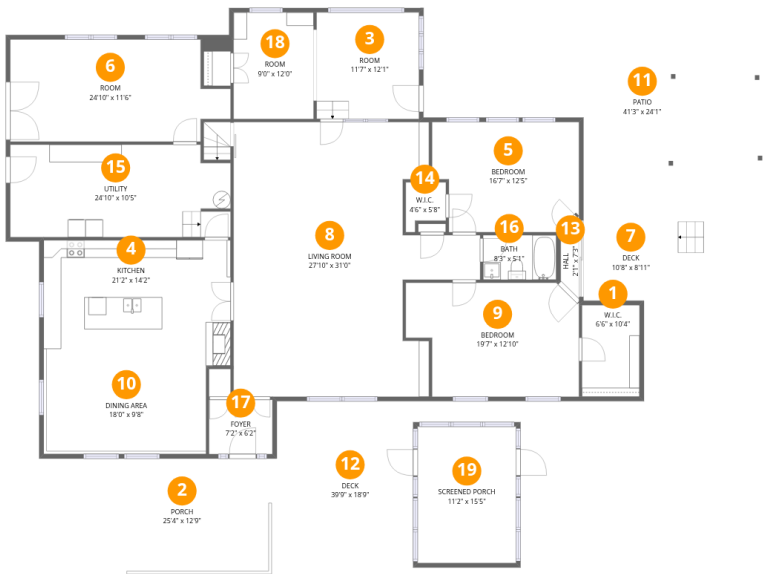
 **2** Floors

 **3** Bedrooms

 **2** Bathrooms

Home data report

3144 Country Club Road, Troutville, Virginia 24175, United States



Room dimensions

Floor 1

Total:2399sqft Excluded: 2026sqft

#		Dimensions	sqft	Counted as living area
1	W.I.C.	6'6" x 10'4"	67 sq. ft	Yes
2	Porch	25'4" x 12'9"	237 sq. ft	No
3	Room	11'7" x 12'1"	139 sq. ft	Yes
4	Kitchen	21'2" x 14'2"	300 sq. ft	Yes
5	Bedroom	16'7" x 12'5"	192 sq. ft	Yes
6	Room	24'10" x 11'6"	260 sq. ft	No
7	Deck	10'8" x 8'11"	106 sq. ft	No
8	Living Room	27'10" x 31'0"	675 sq. ft	Yes
9	Bedroom	19'7" x 12'10"	229 sq. ft	Yes
10	Dining Area	18'0" x 9'8"	183 sq. ft	Yes
11	Patio	41'3" x 24'1"	695 sq. ft	No

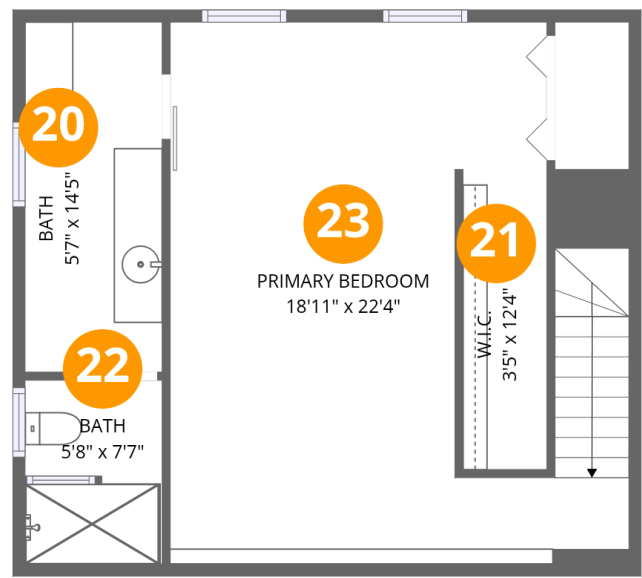
Home data report

3144 Country Club Road, Troutville, Virginia 24175, United States

#		Dimensions	sqft	Counted as living area
12	Deck	39'9" x 18'9"	557 sq. ft	No
13	Hall	2'1" x 7'3"	15 sq. ft	Yes
14	W.I.C.	4'6" x 5'8"	21 sq. ft	Yes
15	Utility	24'10" x 10'5"	265 sq. ft	Yes
16	Bath	8'3" x 5'1"	42 sq. ft	Yes
17	Foyer	7'2" x 6'2"	44 sq. ft	Yes
18	Room	9'0" x 12'0"	109 sq. ft	Yes
19	Screened Porch	11'2" x 15'5"	172 sq. ft	No

Home data report

3144 Country Club Road, Troutville, Virginia 24175, United States



Room dimensions

Floor 2 Total:556sqft Excluded: 0sqft

#		Dimensions	sqft	Counted as living area
20	Bath	5'7" x 14'5"	82 sq. ft	Yes
21	W.I.C.	3'5" x 12'4"	43 sq. ft	Yes
22	Bath	5'8" x 7'7"	42 sq. ft	Yes
23	Primary Bedroom	18'11" x 22'4"	340 sq. ft	Yes

3144 Country Club Road, Troutville, Virginia 24175, United States

1 Floor 1 - W.I.C.



Dimensions: 6'6" x 10'4"
Area: 67 sq. ft
Counted as living area: Yes

Heated: Yes
Finished: Yes
Enclosed: Yes
Contiguous: Yes
Permitted: Yes
Wet space: No
Addition: No
Conversion: No

2 Floor 1 - Porch



Dimensions: 25'4" x 12'9"
Area: 237 sq. ft
Counted as living area: No

Heated: No
Finished: No
Enclosed: No
Contiguous: Yes
Permitted: Yes
Wet space: No
Addition: No
Conversion: No

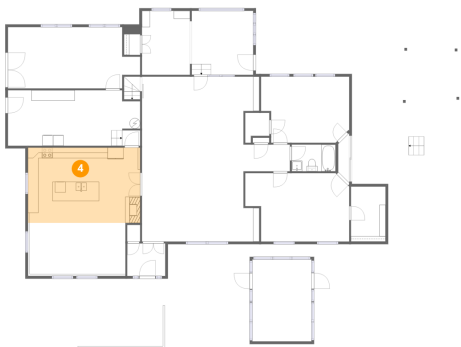
3 Floor 1 - Room



Dimensions: 11'7" x 12'1"
Area: 139 sq. ft
Counted as living area: Yes

Heated: Yes
Finished: Yes
Enclosed: Yes
Contiguous: Yes
Permitted: Yes
Wet space: No
Addition: No
Conversion: No

4 Floor 1 - Kitchen



Dimensions: 21'2" x 14'2"
Area: 300 sq. ft
Counted as living area: Yes

Heated: Yes
Finished: Yes
Enclosed: Yes
Contiguous: Yes
Permitted: Yes
Wet space: No
Addition: No
Conversion: No

5 Floor 1 - Bedroom



Dimensions: 16'7" x 12'5"
Area: 192 sq. ft
Counted as living area: Yes

Heated: Yes
Finished: Yes
Enclosed: Yes
Contiguous: Yes
Permitted: Yes
Wet space: No
Addition: No
Conversion: No

6 Floor 1 - Room



Dimensions: 24'10" x 11'6"
Area: 260 sq. ft
Counted as living area: No

Heated: Yes
Finished: No
Enclosed: Yes
Contiguous: Yes
Permitted: Yes
Wet space: No
Addition: No
Conversion: No

7 Floor 1 - Deck



Dimensions: 10'8" x 8'11"
Area: 106 sq. ft
Counted as living area: No

Heated: No
Finished: No
Enclosed: No
Contiguous: Yes
Permitted: Yes
Wet space: No
Addition: No
Conversion: No

8 Floor 1 - Living Room



Dimensions: 27'10" x 31'0"
Area: 675 sq. ft
Counted as living area: Yes

Heated: Yes
Finished: Yes
Enclosed: Yes
Contiguous: Yes
Permitted: Yes
Wet space: No
Addition: No
Conversion: No

Home data report

3144 Country Club Road, Troutville, Virginia 24175, United States

9 Floor 1 - Bedroom



Dimensions: 19'7" x 12'10"
Area: 229 sq. ft
Counted as living area: Yes

Heated: Yes
Finished: Yes
Enclosed: Yes
Contiguous: Yes
Permitted: Yes
Wet space: No
Addition: No
Conversion: No

10 Floor 1 - Dining Area



Dimensions: 18'0" x 9'8"
Area: 183 sq. ft
Counted as living area: Yes

Heated: Yes
Finished: Yes
Enclosed: Yes
Contiguous: Yes
Permitted: Yes
Wet space: No
Addition: No
Conversion: No

11 Floor 1 - Patio

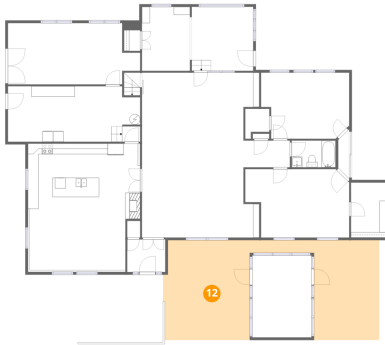


Dimensions: 41'3" x 24'1"
Area: 695 sq. ft
Counted as living area: No

Heated: No
Finished: No
Enclosed: No
Contiguous: Yes
Permitted: Yes
Wet space: No
Addition: No
Conversion: No

3144 Country Club Road, Troutville, Virginia 24175, United States

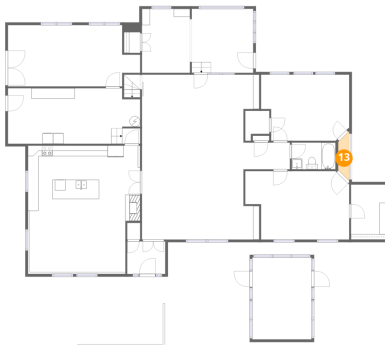
12 Floor 1 - Deck



Dimensions: 39'9" x 18'9"
Area: 557 sq. ft
Counted as living area: No

Heated: No
Finished: No
Enclosed: No
Contiguous: Yes
Permitted: Yes
Wet space: No
Addition: No
Conversion: No

13 Floor 1 - Hall



Dimensions: 2'1" x 7'3"
Area: 15 sq. ft
Counted as living area: Yes

Heated: Yes
Finished: Yes
Enclosed: Yes
Contiguous: Yes
Permitted: Yes
Wet space: No
Addition: No
Conversion: No

14 Floor 1 - W.I.C.



Dimensions: 4'6" x 5'8"
Area: 21 sq. ft
Counted as living area: Yes

Heated: Yes
Finished: Yes
Enclosed: Yes
Contiguous: Yes
Permitted: Yes
Wet space: No
Addition: No
Conversion: No

15 Floor 1 - Utility



Dimensions: 24'10" x 10'5"
Area: 265 sq. ft
Counted as living area: Yes

Heated: Yes
Finished: Yes
Enclosed: Yes
Contiguous: Yes
Permitted: Yes
Wet space: No
Addition: No
Conversion: No

16 Floor 1 - Bath



Dimensions: 8'3" x 5'1"
Area: 42 sq. ft
Counted as living area: Yes

Heated: Yes
Finished: Yes
Enclosed: Yes
Contiguous: Yes
Permitted: Yes
Wet space: Yes
Addition: No
Conversion: No

17 Floor 1 - Foyer



Dimensions: 7'2" x 6'2"
Area: 44 sq. ft
Counted as living area: Yes

Heated: Yes
Finished: Yes
Enclosed: Yes
Contiguous: Yes
Permitted: Yes
Wet space: No
Addition: No
Conversion: No

18 Floor 1 - Room



Dimensions: 9'0" x 12'0"
Area: 109 sq. ft
Counted as living area: Yes

Heated: Yes
Finished: Yes
Enclosed: Yes
Contiguous: Yes
Permitted: Yes
Wet space: No
Addition: No
Conversion: No

19 Floor 1 - Screened Porch



Dimensions: 11'2" x 15'5"
Area: 172 sq. ft
Counted as living area: No

Heated: No
Finished: No
Enclosed: No
Contiguous: Yes
Permitted: Yes
Wet space: No
Addition: No
Conversion: No

20 Floor 2 - Bath

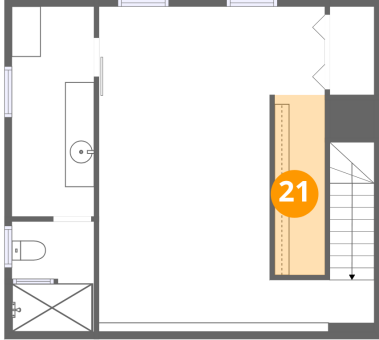


Dimensions: 5'7" x 14'5"
Area: 82 sq. ft
Counted as living area: Yes

Heated: Yes
Finished: Yes
Enclosed: Yes
Contiguous: Yes
Permitted: Yes
Wet space: Yes
Addition: No
Conversion: No

3144 Country Club Road, Troutville, Virginia 24175, United States

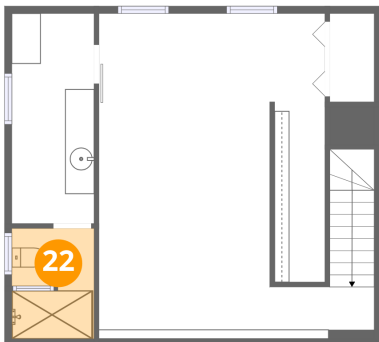
21 Floor 2 - W.I.C.



Dimensions: 3'5" x 12'4"
Area: 43 sq. ft
Counted as living area: Yes

Heated: Yes
Finished: Yes
Enclosed: Yes
Contiguous: Yes
Permitted: Yes
Wet space: No
Addition: No
Conversion: No

22 Floor 2 - Bath



Dimensions: 5'8" x 7'7"
Area: 42 sq. ft
Counted as living area: Yes

Heated: Yes
Finished: Yes
Enclosed: Yes
Contiguous: Yes
Permitted: Yes
Wet space: Yes
Addition: No
Conversion: No

23 Floor 2 - Primary Bedroom



Dimensions: 18'11" x 22'4"
Area: 340 sq. ft
Counted as living area: Yes

Heated: Yes
Finished: Yes
Enclosed: Yes
Contiguous: Yes
Permitted: Yes
Wet space: No
Addition: No
Conversion: No