

Home data report

193 Shelbourne St, Peterborough, ON, CA



Total Area: 1807 sq. ft

Basement: 843 sq. ft, 1st Floor: 964 sq. ft

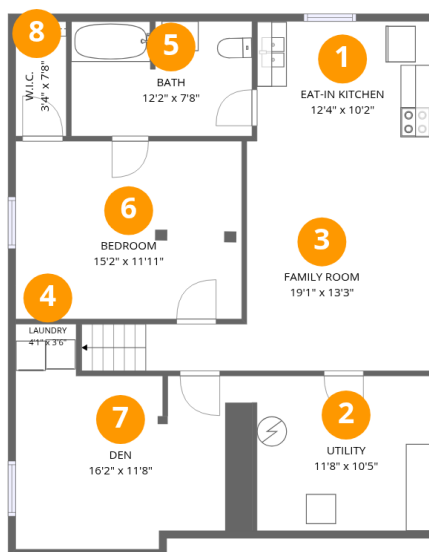
Excluded: Utility 121 sq. ft, Deck 190 sq. ft, Walls: 128 sq. ft

Property summary

 **2** Floors

 **4** Bedrooms

 **2** Bathrooms



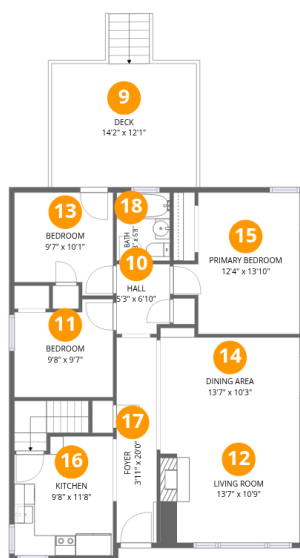
Room dimensions

Floor 1 Below grade

Total: 843 sqft

Excluded: 121 sqft

#		Dimensions	sqft	Counted as living area
1	Eat-in Kitchen	12'4" x 10'2"	120 sq. ft	Yes
2	Utility	11'8" x 10'5"	121 sq. ft	No
3	Family Room	19'1" x 13'3"	198 sq. ft	Yes
4	Laundry	4'1" x 3'6"	14 sq. ft	Yes
5	Bath	12'2" x 7'8"	92 sq. ft	Yes
6	Bedroom	15'2" x 11'11"	181 sq. ft	Yes
7	Den	16'2" x 11'8"	177 sq. ft	Yes
8	W.I.C.	3'4" x 7'8"	26 sq. ft	Yes



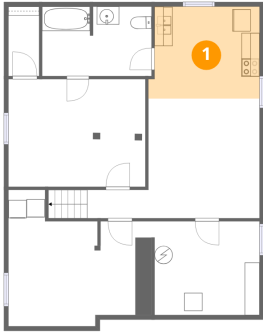
Room dimensions

Floor 2

Total: 964sqft Excluded: 190sqft

#		Dimensions	sqft	Counted as living area
9	Deck	14'2" x 12'1"	190 sq. ft	No
10	Hall	5'3" x 6'10"	34 sq. ft	Yes
11	Bedroom	9'8" x 9'7"	84 sq. ft	Yes
12	Living Room	13'7" x 10'9"	146 sq. ft	Yes
13	Bedroom	9'7" x 10'1"	88 sq. ft	Yes
14	Dining Area	13'7" x 10'3"	129 sq. ft	Yes
15	Primary Bedroom	12'4" x 13'10"	144 sq. ft	Yes
16	Kitchen	9'8" x 11'8"	106 sq. ft	Yes
17	Foyer	3'11" x 20'0"	79 sq. ft	Yes
18	Bath	5'3" x 6'8"	35 sq. ft	Yes

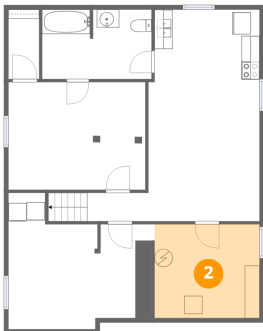
1 Floor 1 - Eat-in Kitchen



Dimensions: 12'4" x 10'2"
Area: 120 sq. ft
Counted as living area: No

Heated: Yes
Finished: Yes
Enclosed: Yes
Contiguous: Yes
Permitted: Yes
Wet space: No
Addition: No
Conversion: No

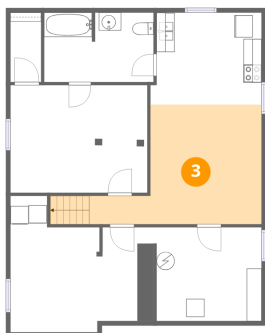
2 Floor 1 - Utility



Dimensions: 11'8" x 10'5"
Area: 121 sq. ft
Counted as living area: No

Heated: Yes
Finished: No
Enclosed: Yes
Contiguous: Yes
Permitted: Yes
Wet space: No
Addition: No
Conversion: No

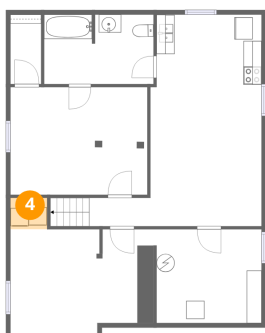
3 Floor 1 - Family Room



Dimensions: 19'1" x 13'3"
Area: 198 sq. ft
Counted as living area: No

Heated: Yes
Finished: Yes
Enclosed: Yes
Contiguous: Yes
Permitted: Yes
Wet space: No
Addition: No
Conversion: No

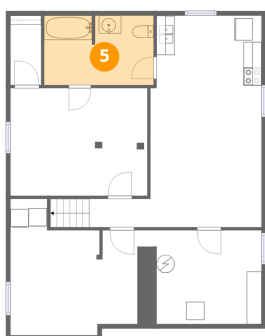
4 Floor 1 - Laundry



Dimensions: 4'1" x 3'6"
Area: 14 sq. ft
Counted as living area: Yes

Heated: Yes
Finished: Yes
Enclosed: Yes
Contiguous: Yes
Permitted: Yes
Wet space: No
Addition: No
Conversion: No

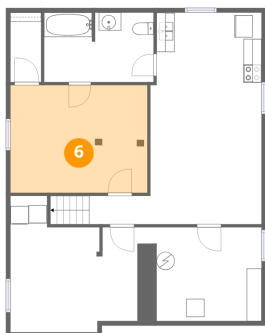
5 Floor 1 - Bath



Dimensions: 12'2" x 7'8"
Area: 92 sq. ft
Counted as living area: Yes

Heated: Yes
Finished: Yes
Enclosed: Yes
Contiguous: Yes
Permitted: Yes
Wet space: Yes
Addition: No
Conversion: No

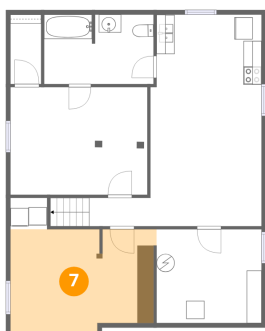
6 Floor 1 - Bedroom



Dimensions: 15'2" x 11'11"
Area: 181 sq. ft
Counted as living area: No

Heated: Yes
Finished: Yes
Enclosed: Yes
Contiguous: Yes
Permitted: Yes
Wet space: No
Addition: No
Conversion: No

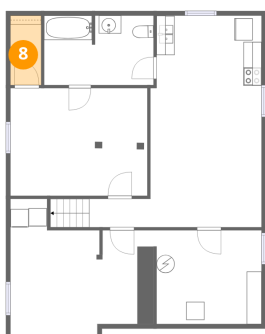
7 Floor 1 - Den



Dimensions: 16'2" x 11'8"
Area: 177 sq. ft
Counted as living area: No

Heated: Yes
Finished: Yes
Enclosed: Yes
Contiguous: Yes
Permitted: Yes
Wet space: No
Addition: No
Conversion: No

8 Floor 1 - W.I.C.



Dimensions: 3'4" x 7'8"
Area: 26 sq. ft
Counted as living area: No

Heated: Yes
Finished: Yes
Enclosed: Yes
Contiguous: Yes
Permitted: Yes
Wet space: No
Addition: No
Conversion: No

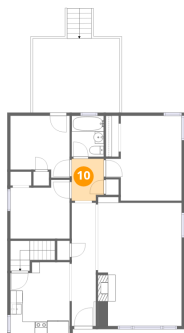
9 Floor 2 - Deck



Dimensions: 14'2" x 12'1"
Area: 190 sq. ft
Counted as living area: No

Heated: No
Finished: No
Enclosed: No
Contiguous: Yes
Permitted: Yes
Wet space: No
Addition: No
Conversion: No

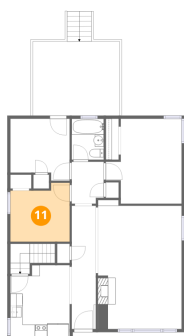
10 Floor 2 - Hall



Dimensions: 5'3" x 6'10"
Area: 34 sq. ft
Counted as living area: Yes

Heated: Yes
Finished: Yes
Enclosed: Yes
Contiguous: Yes
Permitted: Yes
Wet space: No
Addition: No
Conversion: No

11 Floor 2 - Bedroom



Dimensions: 9'8" x 9'7"
Area: 84 sq. ft
Counted as living area: Yes

Heated: Yes
Finished: Yes
Enclosed: Yes
Contiguous: Yes
Permitted: Yes
Wet space: No
Addition: No
Conversion: No

12 Floor 2 - Living Room



Dimensions: 13'7" x 10'9"
Area: 146 sq. ft
Counted as living area: Yes

Heated: Yes
Finished: Yes
Enclosed: Yes
Contiguous: Yes
Permitted: Yes
Wet space: No
Addition: No
Conversion: No

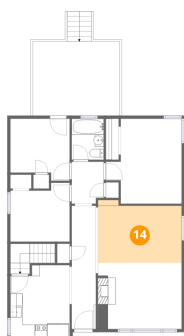
13 Floor 2 - Bedroom



Dimensions: 9'7" x 10'1"
Area: 88 sq. ft
Counted as living area: Yes

Heated: Yes
Finished: Yes
Enclosed: Yes
Contiguous: Yes
Permitted: Yes
Wet space: No
Addition: No
Conversion: No

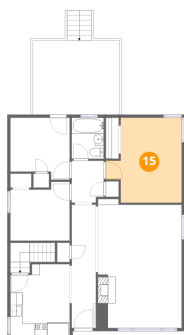
14 Floor 2 - Dining Area



Dimensions: 13'7" x 10'3"
Area: 129 sq. ft
Counted as living area: Yes

Heated: Yes
Finished: Yes
Enclosed: Yes
Contiguous: Yes
Permitted: Yes
Wet space: No
Addition: No
Conversion: No

15 Floor 2 - Primary Bedroom



Dimensions: 12'4" x 13'10"
Area: 144 sq. ft
Counted as living area: Yes

Heated: Yes
Finished: Yes
Enclosed: Yes
Contiguous: Yes
Permitted: Yes
Wet space: No
Addition: No
Conversion: No

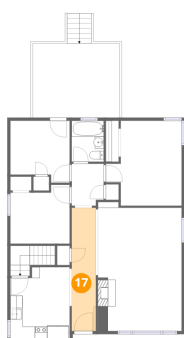
16 Floor 2 - Kitchen



Dimensions: 9'8" x 11'8"
Area: 106 sq. ft
Counted as living area: Yes

Heated: Yes
Finished: Yes
Enclosed: Yes
Contiguous: Yes
Permitted: Yes
Wet space: No
Addition: No
Conversion: No

17 Floor 2 - Foyer



Dimensions: 3'11" x 20'0"
Area: 79 sq. ft
Counted as living area: Yes

Heated: Yes
Finished: Yes
Enclosed: Yes
Contiguous: Yes
Permitted: Yes
Wet space: No
Addition: No
Conversion: No

18 Floor 2 - Bath



Dimensions: 5'3" x 6'8"
Area: 35 sq. ft
Counted as living area: Yes

Heated: Yes
Finished: Yes
Enclosed: Yes
Contiguous: Yes
Permitted: Yes
Wet space: Yes
Addition: No
Conversion: No