

# 905 Pennington Drive, Lancaster, Lancaster County, South Carolina, United States, 29720

Gross Living Area: 2504 sq. ft

## Level 1



Space	Area (sq. ft)	Calculation
1st floor (Living area)	1113	Coordinate Polygon Area Algorithm using inches $  \begin{aligned}  & -((450.9 + 450.9) * (-216.7 - -157.3) + (450.9 + 552.5) * (-157.3 - -157.3) + (552.5 + 552.5) * \\  & (-157.3 - 375.9) + (552.5 + 468.2) * (375.9 - 375.9) + (468.2 + 468.2) * (375.9 - 369.9) + (468.2 + \\  & 462.2) * (369.9 - 369.9) + (462.2 + 462.2) * (369.9 - 325.1) + (462.2 + 284.2) * (325.1 - 325.1) + \\  & (284.2 + 284.2) * (325.1 - 276.7) + (284.2 + 240) * (276.7 - 276.7) + (240 + 240) * (276.7 - -175.8) \\  & + (240 + 371.6) * (-175.8 - -175.8) + (371.6 + 371.6) * (-175.8 - -216.7) + (371.6 + 450.9) * (-216.7 \\  & - -216.7)) * 0.5 * 0.00694  \end{aligned}  $

# 905 Pennington Drive, Lancaster, Lancaster County, South Carolina, United States, 29720

Gross Living Area: 2504 sq. ft

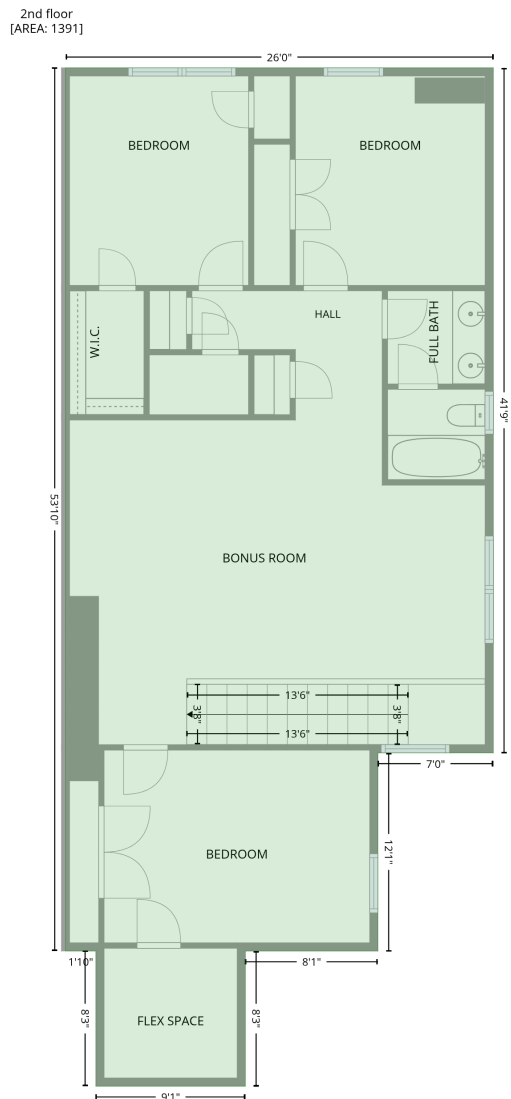
## Level 1

Space	Area (sq. ft)	Calculation <small>Coordinate Polygon Area Algorithm using inches</small>
GARAGE (Non-living area)	399	$-\left((284.2 + 284.2) * (276.7 - 325.1) + (284.2 + 462.2) * (325.1 - 325.1) + (462.2 + 462.2) * (325.1 - 369.9) + (462.2 + 468.2) * (369.9 - 369.9) + (468.2 + 468.2) * (369.9 - 568.8) + (468.2 + 240) * (568.8 - 568.8) + (240 + 240) * (568.8 - 276.7) + (240 + 284.2) * (276.7 - 276.7)\right) * 0.5 * 0.00694$

# 905 Pennington Drive, Lancaster, Lancaster County, South Carolina, United States, 29720

Gross Living Area: 2504 sq. ft

## Level 2



Space	Area (sq. ft)	Calculation <small>Coordinate Polygon Area Algorithm using inches</small>
2nd floor (Living area)	1391	$-\left((552.5 + 552.5) * (-175.8 - 325.1) + (552.5 + 468.2) * (325.1 - 325.1) + (468.2 + 468.2) * (325.1 - 470) + (468.2 + 371.4) * (470 - 470) + (371.4 + 371.4) * (470 - 568.8) + (371.4 + 262.2) * (568.8 - 568.8) + (262.2 + 262.2) * (568.8 - 470) + (262.2 + 240) * (470 - 470) + (240 + 240) * (470 - 175.8) + (240 + 552.5) * (-175.8 - -175.8)\right) * 0.5 * 0.00694$