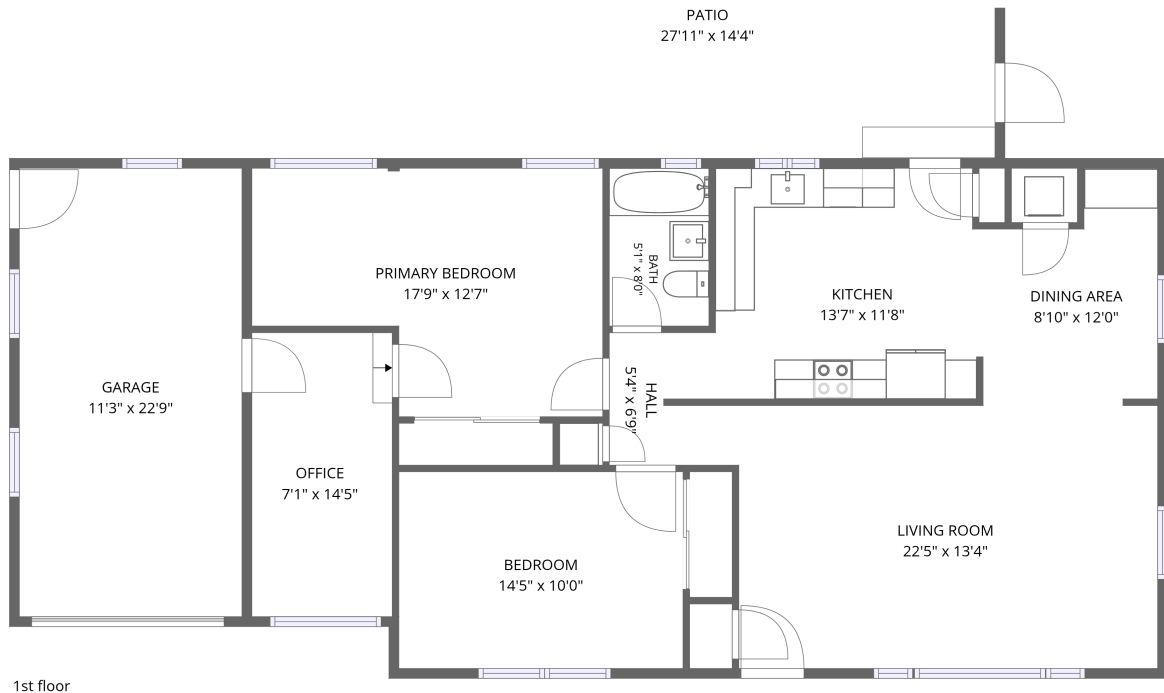


Home data report

900 Isabella Street, Wilmette, Cook County, Illinois, United States, 60091

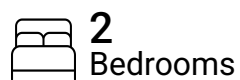


Total Area: 1144 sq. ft

1st Floor: 1144 sq. ft

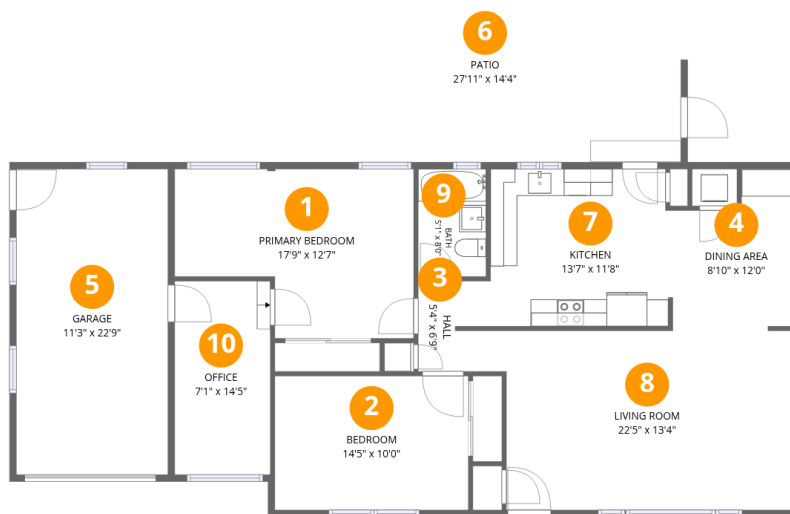
Excluded: Garage 256 sq. ft, Patio 384 sq. ft, Walls: 98 sq. ft

Property summary



Home data report

900 Isabella Street, Wilmette, Cook County, Illinois, United States, 60091



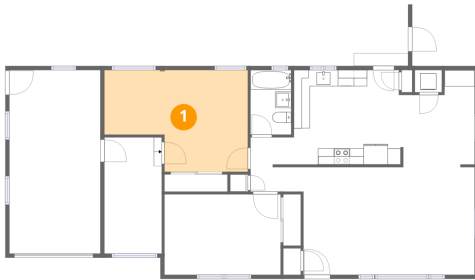
Room dimensions

Floor 1

Total:1144sqft Excluded: 640sqft

#		Dimensions	sqft	Counted as living area
1	Primary Bedroom	17'9" x 12'7"	190 sq. ft	Yes
2	Bedroom	14'5" x 10'0"	144 sq. ft	Yes
3	Hall	5'4" x 6'9"	35 sq. ft	Yes
4	Dining Area	8'10" x 12'0"	90 sq. ft	Yes
5	Garage	11'3" x 22'9"	256 sq. ft	No
6	Patio	27'11" x 14'4"	384 sq. ft	No
7	Kitchen	13'7" x 11'8"	156 sq. ft	Yes
8	Living Room	22'5" x 13'4"	286 sq. ft	Yes
9	Bath	5'1" x 8'0"	40 sq. ft	Yes
10	Office	7'1" x 14'5"	102 sq. ft	Yes

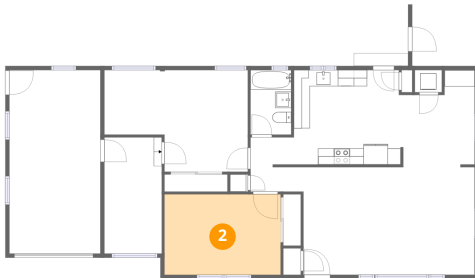
1 Floor 1 - Primary Bedroom



Dimensions: 17'9" x 12'7"
Area: 190 sq. ft
Counted as living area: Yes

Heated: Yes
Finished: Yes
Enclosed: Yes
Contiguous: Yes
Permitted: Yes
Wet space: No
Addition: No
Conversion: No

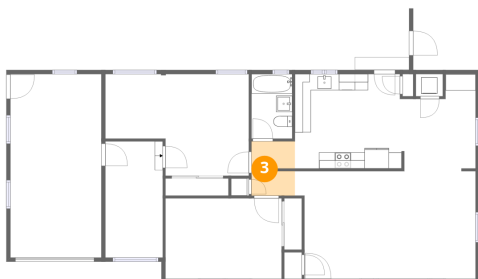
2 Floor 1 - Bedroom



Dimensions: 14'5" x 10'0"
Area: 144 sq. ft
Counted as living area: Yes

Heated: Yes
Finished: Yes
Enclosed: Yes
Contiguous: Yes
Permitted: Yes
Wet space: No
Addition: No
Conversion: No

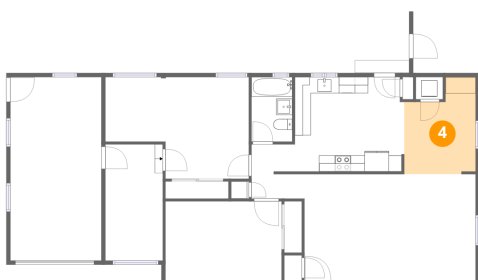
3 Floor 1 - Hall



Dimensions: 5'4" x 6'9"
Area: 35 sq. ft
Counted as living area: Yes

Heated: Yes
Finished: Yes
Enclosed: Yes
Contiguous: Yes
Permitted: Yes
Wet space: No
Addition: No
Conversion: No

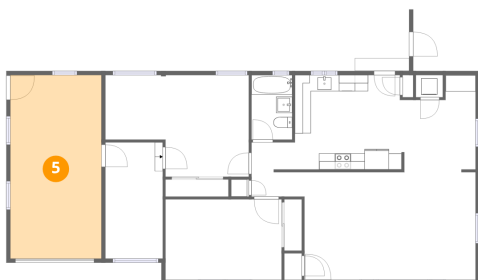
4 Floor 1 - Dining Area



Dimensions: 8'10" x 12'0"
Area: 90 sq. ft
Counted as living area: Yes

Heated: Yes
Finished: Yes
Enclosed: Yes
Contiguous: Yes
Permitted: Yes
Wet space: No
Addition: No
Conversion: No

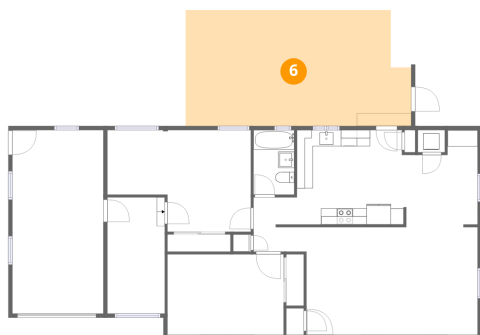
5 Floor 1 - Garage



Dimensions: 11'3" x 22'9"
Area: 256 sq. ft
Counted as living area: No

Heated: No
Finished: No
Enclosed: Yes
Contiguous: Yes
Permitted: Yes
Wet space: No
Addition: No
Conversion: No

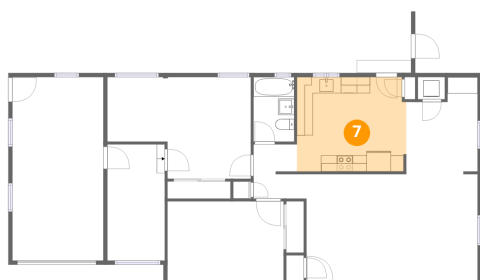
6 Floor 1 - Patio



Dimensions: 27'11" x 14'4"
Area: 384 sq. ft
Counted as living area: No

Heated: No
Finished: No
Enclosed: No
Contiguous: Yes
Permitted: Yes
Wet space: No
Addition: No
Conversion: No

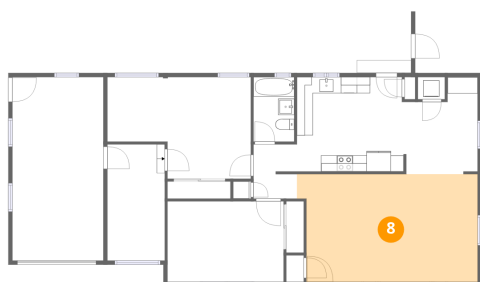
7 Floor 1 - Kitchen



Dimensions: 13'7" x 11'8"
Area: 156 sq. ft
Counted as living area: Yes

Heated: Yes
Finished: Yes
Enclosed: Yes
Contiguous: Yes
Permitted: Yes
Wet space: No
Addition: No
Conversion: No

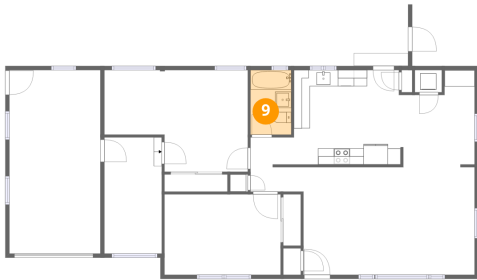
8 Floor 1 - Living Room



Dimensions: 22'5" x 13'4"
Area: 286 sq. ft
Counted as living area: Yes

Heated: Yes
Finished: Yes
Enclosed: Yes
Contiguous: Yes
Permitted: Yes
Wet space: No
Addition: No
Conversion: No

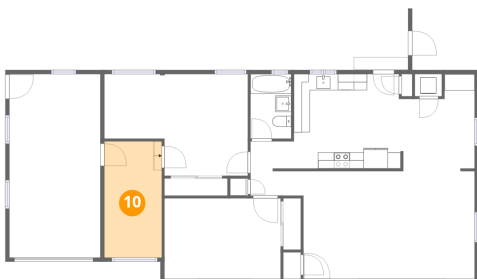
9 Floor 1 - Bath



Dimensions: 5'1" x 8'0"
Area: 40 sq. ft
Counted as living area: Yes

Heated: Yes
Finished: Yes
Enclosed: Yes
Contiguous: Yes
Permitted: Yes
Wet space: Yes
Addition: No
Conversion: No

10 Floor 1 - Office



Dimensions: 7'1" x 14'5"
Area: 102 sq. ft
Counted as living area: Yes

Heated: Yes
Finished: Yes
Enclosed: Yes
Contiguous: Yes
Permitted: Yes
Wet space: No
Addition: No
Conversion: No