

Home data report

3808 Derby Drive, Roanoke, Roanoke County, Virginia, United States, 24012



Total Area: 2797 sq. ft

1st Floor: 766 sq. ft, 2nd Floor: 1019 sq. ft, 3rd Floor: 1012 sq. ft

Excluded: Storage 89 sq. ft, Electrical room 72 sq. ft, Garage 397 sq. ft, Screened porch 149 sq. ft, Porch 119 sq. ft, Embedded window 6 sq. ft, Fireplace 10 sq. ft, Walls: 256 sq. ft

Property summary


 **3** Floors

 **4** Bedrooms

 **2** Bathrooms

Home data report

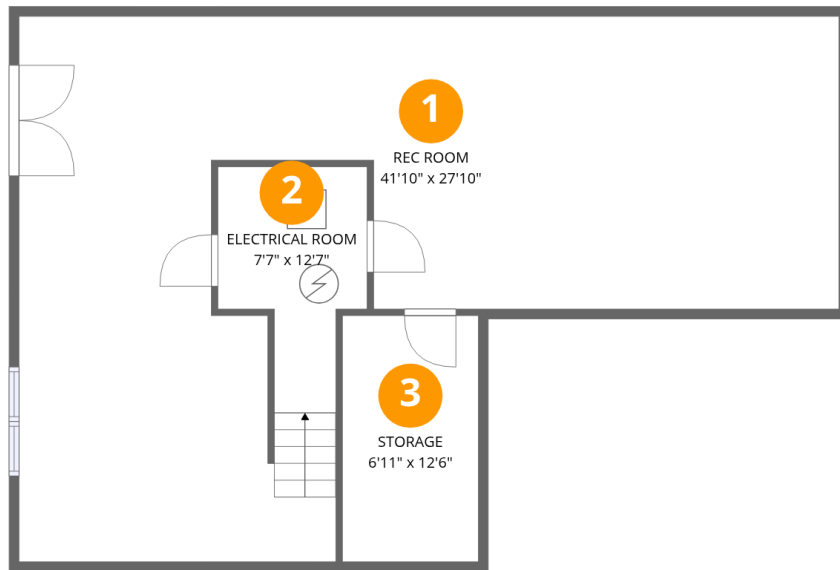
3808 Derby Drive, Roanoke, Roanoke County, Virginia, United States, 24012

 **1**
Half baths

 **1**
Garages

Home data report

3808 Derby Drive, Roanoke, Roanoke County, Virginia, United States, 24012



Room dimensions

Floor 1

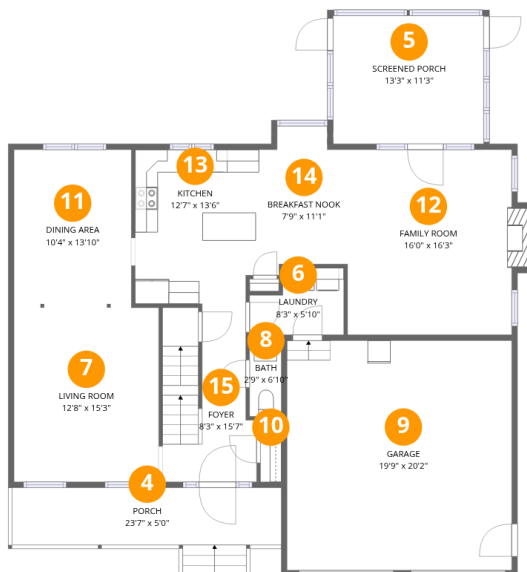
Total:766sqft

Excluded: 161sqft

| # | | Dimensions | sqft | Counted as living area |
|---|-----------------|-----------------|------------|------------------------|
| 1 | Rec Room | 41'10" x 27'10" | 750 sq. ft | Yes |
| 2 | Electrical Room | 7'7" x 12'7" | 72 sq. ft | No |
| 3 | Storage | 6'11" x 12'6" | 87 sq. ft | No |

Home data report

3808 Derby Drive, Roanoke, Roanoke County, Virginia, United States, 24012



Room dimensions

Floor 2

Total:1019sqft Excluded: 681sqft

| # | | Dimensions | sqft | Counted as living area |
|----|----------------|----------------|------------|------------------------|
| 4 | Porch | 23'7" x 5'0" | 119 sq. ft | No |
| 5 | Screened Porch | 13'3" x 11'3" | 149 sq. ft | No |
| 6 | Laundry | 8'3" x 5'10" | 41 sq. ft | Yes |
| 7 | Living Room | 12'8" x 15'3" | 194 sq. ft | Yes |
| 8 | Bath | 2'9" x 6'10" | 19 sq. ft | Yes |
| 9 | Garage | 19'9" x 20'2" | 397 sq. ft | No |
| 10 | Closet | 1'10" x 5'5" | 10 sq. ft | Yes |
| 11 | Dining Area | 10'4" x 13'10" | 143 sq. ft | Yes |
| 12 | Family Room | 16'0" x 16'3" | 242 sq. ft | Yes |
| 13 | Kitchen | 12'7" x 13'6" | 146 sq. ft | Yes |
| 14 | Breakfast Nook | 7'9" x 11'1" | 83 sq. ft | Yes |

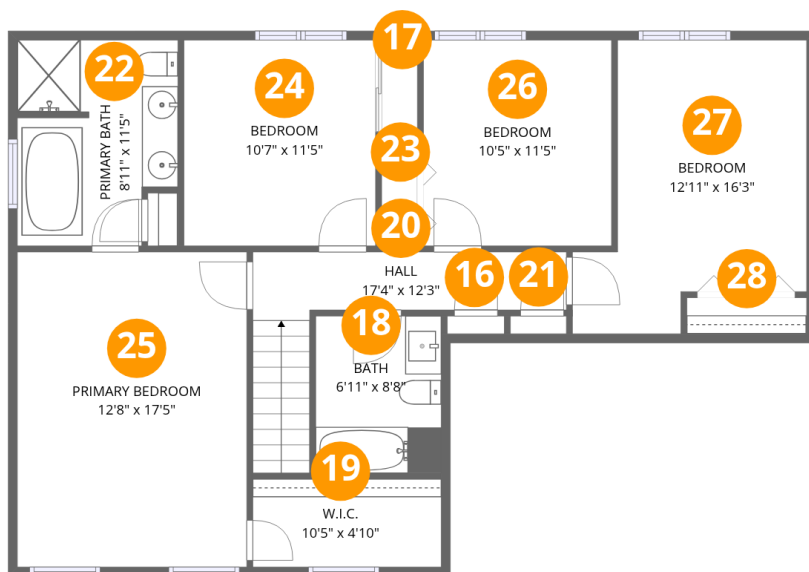
Home data report

3808 Derby Drive, Roanoke, Roanoke County, Virginia, United States, 24012

| # | | Dimensions | sqft | Counted as living area |
|----|-------|--------------|------------|------------------------|
| 15 | Foyer | 8'3" x 15'7" | 115 sq. ft | Yes |

Home data report

3808 Derby Drive, Roanoke, Roanoke County, Virginia, United States, 24012



Room dimensions

Floor 3

Total:1012sqft Excluded: 0sqft

| # | | Dimensions | sqft | Counted as living area |
|----|-----------------|---------------|------------|------------------------|
| 16 | Closet | 3'2" x 1'0" | 3 sq. ft | Yes |
| 17 | Closet | 2'0" x 5'7" | 11 sq. ft | Yes |
| 18 | Bath | 6'11" x 8'8" | 60 sq. ft | Yes |
| 19 | W.I.C. | 10'5" x 4'10" | 51 sq. ft | Yes |
| 20 | Hall | 17'4" x 12'3" | 84 sq. ft | Yes |
| 21 | Closet | 3'1" x 1'0" | 3 sq. ft | Yes |
| 22 | Primary Bath | 8'11" x 11'5" | 93 sq. ft | Yes |
| 23 | Closet | 2'0" x 5'5" | 11 sq. ft | Yes |
| 24 | Bedroom | 10'7" x 11'5" | 121 sq. ft | Yes |
| 25 | Primary Bedroom | 12'8" x 17'5" | 221 sq. ft | Yes |
| 26 | Bedroom | 10'5" x 11'5" | 118 sq. ft | Yes |

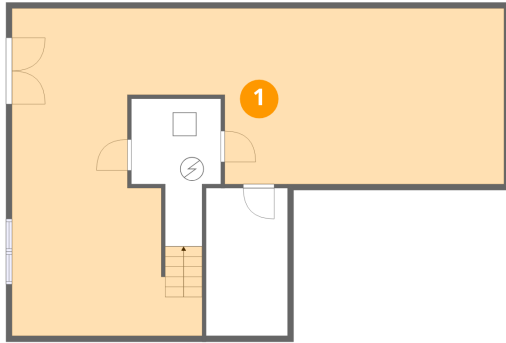
Home data report

3808 Derby Drive, Roanoke, Roanoke County, Virginia, United States, 24012

| # | | Dimensions | sqft | Counted as living area |
|----|---------|----------------|------------|------------------------|
| 27 | Bedroom | 12'11" x 16'3" | 165 sq. ft | Yes |
| 28 | Closet | 6'7" x 2'0" | 13 sq. ft | Yes |

3808 Derby Drive, Roanoke, Roanoke County, Virginia, United States, 24012

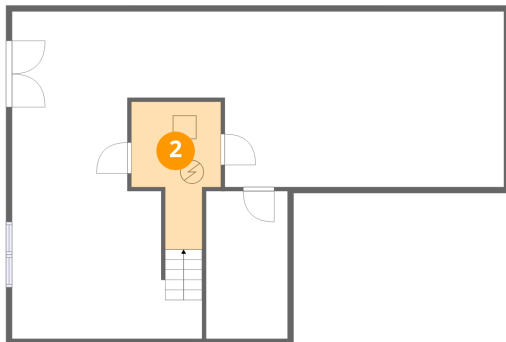
1 Floor 1 - Rec Room



Dimensions: 41'10" x 27'10"
Area: 750 sq. ft
Counted as living area: Yes

Heated: Yes
Finished: Yes
Enclosed: Yes
Contiguous: Yes
Permitted: Yes
Wet space: No
Addition: No
Conversion: No

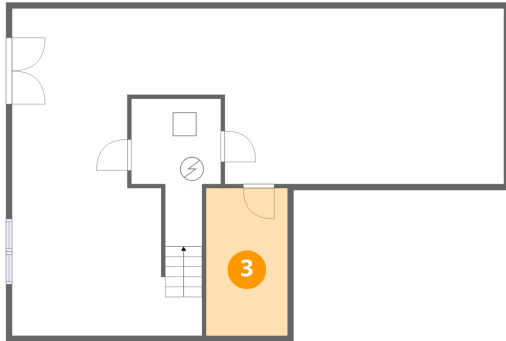
2 Floor 1 - Electrical Room



Dimensions: 7'7" x 12'7"
Area: 72 sq. ft
Counted as living area: No

Heated: No
Finished: No
Enclosed: Yes
Contiguous: Yes
Permitted: Yes
Wet space: No
Addition: No
Conversion: No

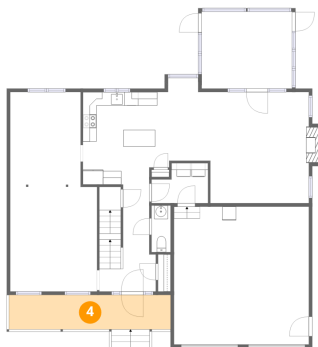
3 Floor 1 - Storage



Dimensions: 6'11" x 12'6"
Area: 87 sq. ft
Counted as living area: No

Heated: No
Finished: No
Enclosed: No
Contiguous: Yes
Permitted: Yes
Wet space: No
Addition: No
Conversion: No

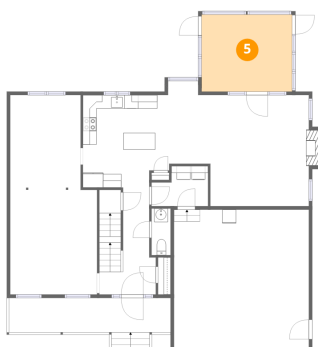
4 Floor 2 - Porch



Dimensions: 23'7" x 5'0"
Area: 119 sq. ft
Counted as living area: No

Heated: No
Finished: Yes
Enclosed: No
Contiguous: Yes
Permitted: Yes
Wet space: No
Addition: No
Conversion: No

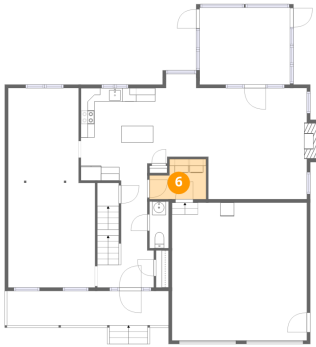
5 Floor 2 - Screened Porch



Dimensions: 13'3" x 11'3"
Area: 149 sq. ft
Counted as living area: No

Heated: No
Finished: Yes
Enclosed: No
Contiguous: Yes
Permitted: Yes
Wet space: No
Addition: No
Conversion: No

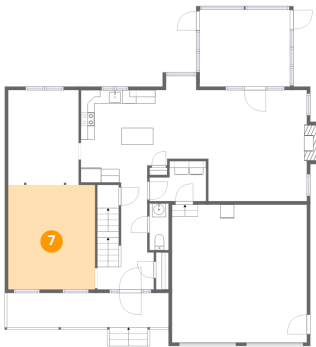
6 Floor 2 - Laundry



Dimensions: 8'3" x 5'10"
Area: 41 sq. ft
Counted as living area: Yes

Heated: Yes
Finished: Yes
Enclosed: Yes
Contiguous: Yes
Permitted: Yes
Wet space: No
Addition: No
Conversion: No

7 Floor 2 - Living Room



Dimensions: 12'8" x 15'3"
Area: 194 sq. ft
Counted as living area: Yes

Heated: Yes
Finished: Yes
Enclosed: Yes
Contiguous: Yes
Permitted: Yes
Wet space: No
Addition: No
Conversion: No

8 Floor 2 - Bath

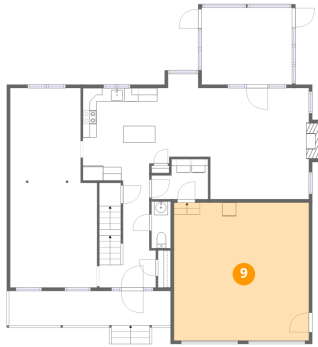


Dimensions: 2'9" x 6'10"
Area: 19 sq. ft
Counted as living area: Yes

Heated: Yes
Finished: Yes
Enclosed: Yes
Contiguous: Yes
Permitted: Yes
Wet space: Yes
Addition: No
Conversion: No

3808 Derby Drive, Roanoke, Roanoke County, Virginia, United States, 24012

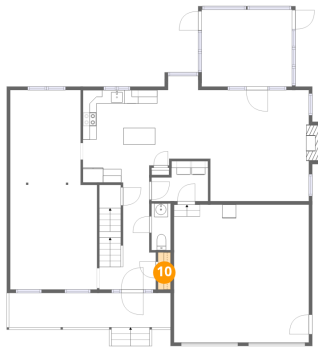
9 Floor 2 - Garage



Dimensions: 19'9" x 20'2"
Area: 397 sq. ft
Counted as living area: No

Heated: No
Finished: No
Enclosed: Yes
Contiguous: Yes
Permitted: Yes
Wet space: No
Addition: No
Conversion: No

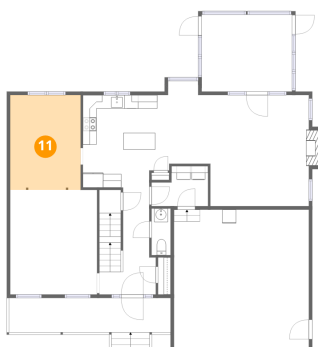
10 Floor 2 - Closet



Dimensions: 1'10" x 5'5"
Area: 10 sq. ft
Counted as living area: Yes

Heated: Yes
Finished: Yes
Enclosed: Yes
Contiguous: Yes
Permitted: Yes
Wet space: No
Addition: No
Conversion: No

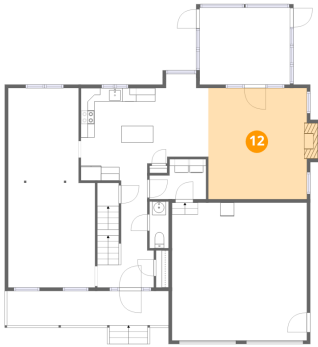
11 Floor 2 - Dining Area



Dimensions: 10'4" x 13'10"
Area: 143 sq. ft
Counted as living area: Yes

Heated: Yes
Finished: Yes
Enclosed: Yes
Contiguous: Yes
Permitted: Yes
Wet space: No
Addition: No
Conversion: No

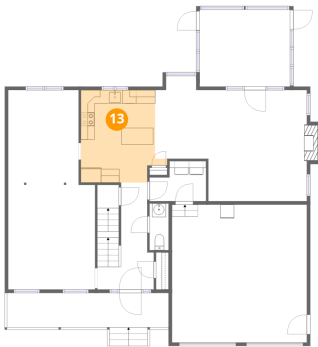
12 Floor 2 - Family Room



Dimensions: 16'0" x 16'3"
Area: 242 sq. ft
Counted as living area: Yes

Heated: Yes
Finished: Yes
Enclosed: Yes
Contiguous: Yes
Permitted: Yes
Wet space: No
Addition: No
Conversion: No

13 Floor 2 - Kitchen



Dimensions: 12'7" x 13'6"
Area: 146 sq. ft
Counted as living area: Yes

Heated: Yes
Finished: Yes
Enclosed: Yes
Contiguous: Yes
Permitted: Yes
Wet space: No
Addition: No
Conversion: No

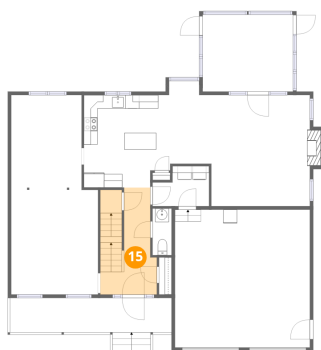
14 Floor 2 - Breakfast Nook



Dimensions: 7'9" x 11'1"
Area: 83 sq. ft
Counted as living area: Yes

Heated: Yes
Finished: Yes
Enclosed: Yes
Contiguous: Yes
Permitted: Yes
Wet space: No
Addition: No
Conversion: No

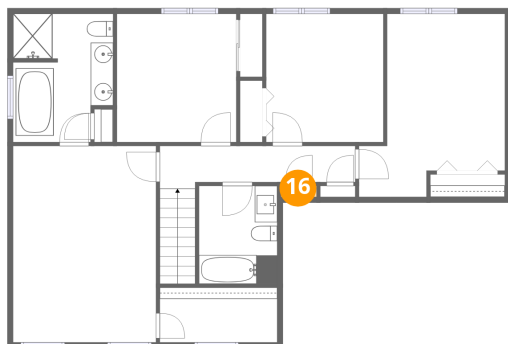
15 Floor 2 - Foyer



Dimensions: 8'3" x 15'7"
Area: 115 sq. ft
Counted as living area: Yes

Heated: Yes
Finished: Yes
Enclosed: Yes
Contiguous: Yes
Permitted: Yes
Wet space: No
Addition: No
Conversion: No

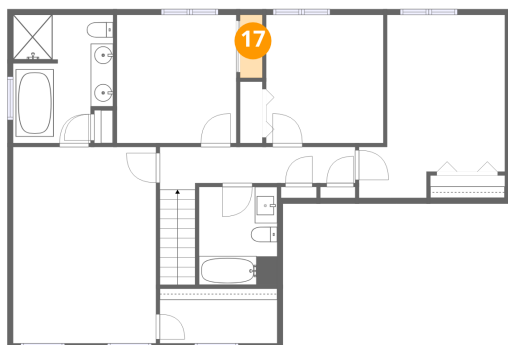
16 Floor 3 - Closet



Dimensions: 3'2" x 1'0"
Area: 3 sq. ft
Counted as living area: Yes

Heated: Yes
Finished: Yes
Enclosed: Yes
Contiguous: Yes
Permitted: Yes
Wet space: No
Addition: No
Conversion: No

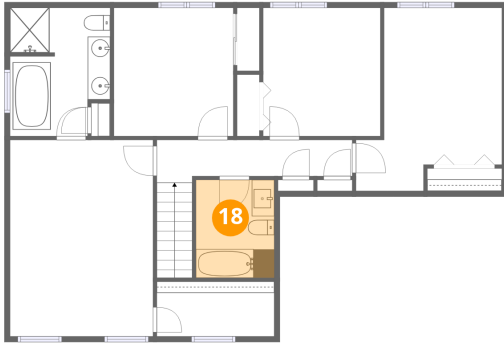
17 Floor 3 - Closet



Dimensions: 2'0" x 5'7"
Area: 11 sq. ft
Counted as living area: Yes

Heated: Yes
Finished: Yes
Enclosed: Yes
Contiguous: Yes
Permitted: Yes
Wet space: No
Addition: No
Conversion: No

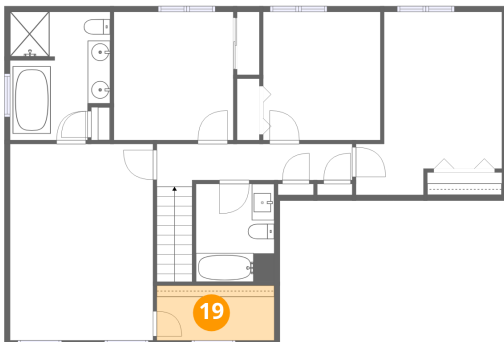
18 Floor 3 - Bath



Dimensions: 6'11" x 8'8"
Area: 60 sq. ft
Counted as living area: Yes

Heated: Yes
Finished: Yes
Enclosed: Yes
Contiguous: Yes
Permitted: Yes
Wet space: Yes
Addition: No
Conversion: No

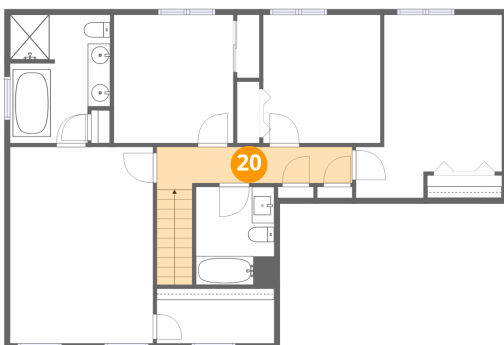
19 Floor 3 - W.I.C.



Dimensions: 10'5" x 4'10"
Area: 51 sq. ft
Counted as living area: Yes

Heated: Yes
Finished: Yes
Enclosed: Yes
Contiguous: Yes
Permitted: Yes
Wet space: No
Addition: No
Conversion: No

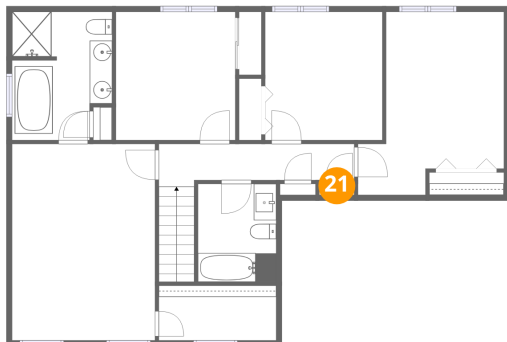
20 Floor 3 - Hall



Dimensions: 17'4" x 12'3"
Area: 84 sq. ft
Counted as living area: Yes

Heated: Yes
Finished: Yes
Enclosed: Yes
Contiguous: Yes
Permitted: Yes
Wet space: No
Addition: No
Conversion: No

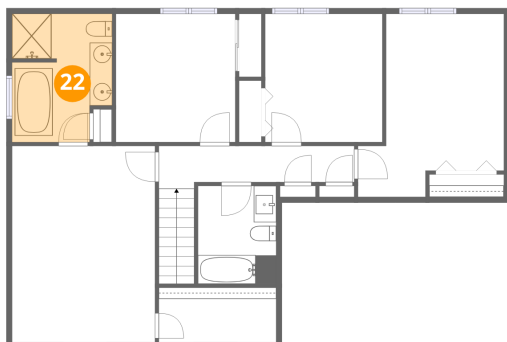
21 Floor 3 - Closet



Dimensions: 3'1" x 1'0"
Area: 3 sq. ft
Counted as living area: Yes

Heated: Yes
Finished: Yes
Enclosed: Yes
Contiguous: Yes
Permitted: Yes
Wet space: No
Addition: No
Conversion: No

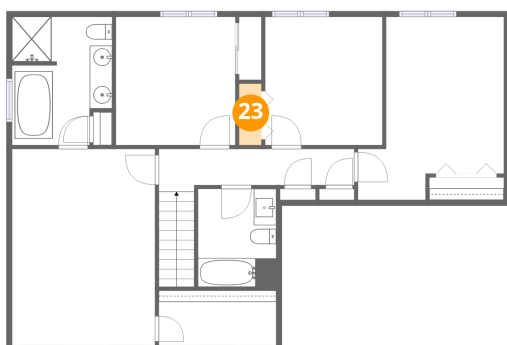
22 Floor 3 - Primary Bath



Dimensions: 8'11" x 11'5"
Area: 93 sq. ft
Counted as living area: Yes

Heated: Yes
Finished: Yes
Enclosed: Yes
Contiguous: Yes
Permitted: Yes
Wet space: Yes
Addition: No
Conversion: No

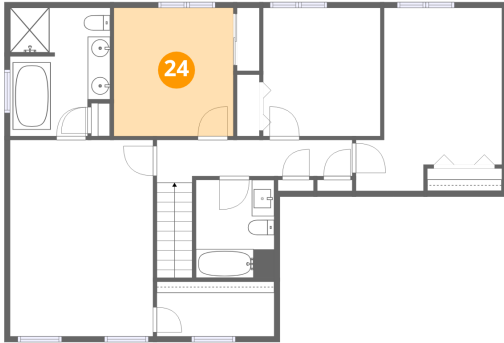
23 Floor 3 - Closet



Dimensions: 2'0" x 5'5"
Area: 11 sq. ft
Counted as living area: Yes

Heated: Yes
Finished: Yes
Enclosed: Yes
Contiguous: Yes
Permitted: Yes
Wet space: No
Addition: No
Conversion: No

24 Floor 3 - Bedroom



Dimensions: 10'7" x 11'5"
Area: 121 sq. ft
Counted as living area: Yes

Heated: Yes
Finished: Yes
Enclosed: Yes
Contiguous: Yes
Permitted: Yes
Wet space: No
Addition: No
Conversion: No

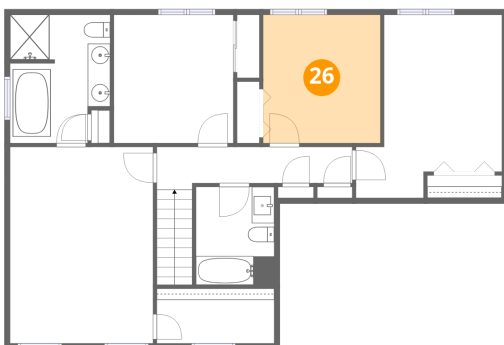
25 Floor 3 - Primary Bedroom



Dimensions: 12'8" x 17'5"
Area: 221 sq. ft
Counted as living area: Yes

Heated: Yes
Finished: Yes
Enclosed: Yes
Contiguous: Yes
Permitted: Yes
Wet space: No
Addition: No
Conversion: No

26 Floor 3 - Bedroom



Dimensions: 10'5" x 11'5"
Area: 118 sq. ft
Counted as living area: Yes

Heated: Yes
Finished: Yes
Enclosed: Yes
Contiguous: Yes
Permitted: Yes
Wet space: No
Addition: No
Conversion: No

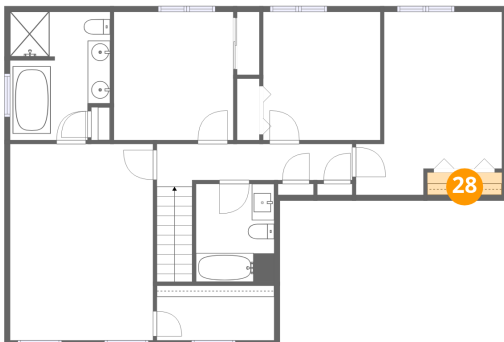
27 Floor 3 - Bedroom



Dimensions: 12'11" x 16'3"
Area: 165 sq. ft
Counted as living area: Yes

Heated: Yes
Finished: Yes
Enclosed: Yes
Contiguous: Yes
Permitted: Yes
Wet space: No
Addition: No
Conversion: No

28 Floor 3 - Closet



Dimensions: 6'7" x 2'0"
Area: 13 sq. ft
Counted as living area: Yes

Heated: Yes
Finished: Yes
Enclosed: Yes
Contiguous: Yes
Permitted: Yes
Wet space: No
Addition: No
Conversion: No