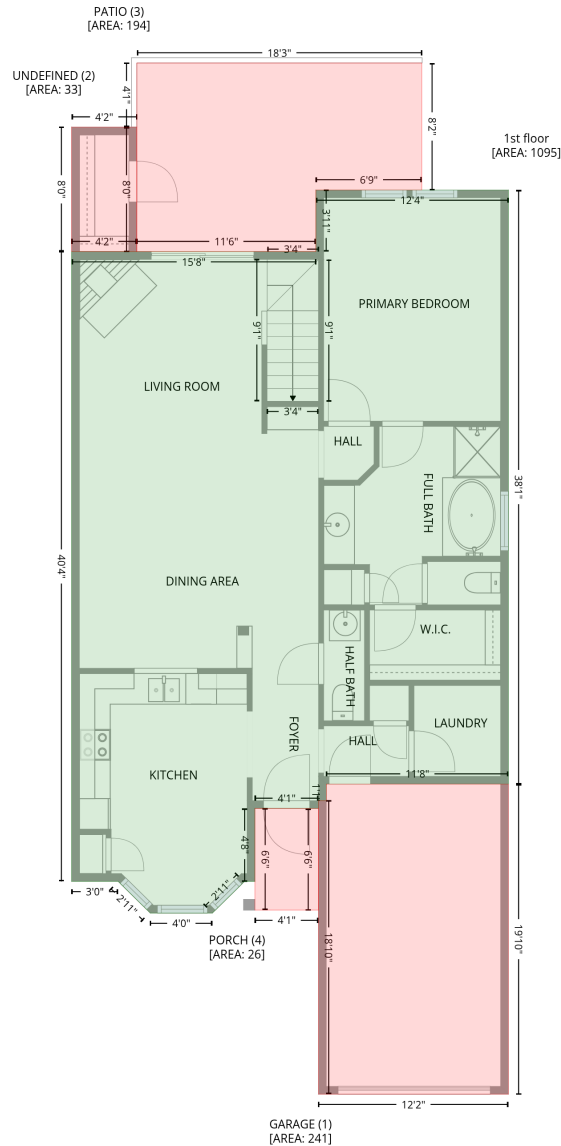


# 303 Nostalgia Lane, Zebulon, Wake County, North Carolina, United States, 27597

Gross Living Area: 1764 sq. ft

## Level 1



Space	Area (sq. ft)	Calculation
1st floor (Living area)	1095	Coordinate Polygon Area Algorithm using inches $-((379.8 + 379.8) * (79.8 - 536.6) + (379.8 + 239.9) * (536.6 - 536.6) + (239.9 + 239.9) * (536.6 - 549.3) + (239.9 + 233.9) * (549.3 - 549.3) + (233.9 + 233.9) * (549.3 - 555.3) + (233.9 + 185.1) * (555.3 - 555.3) + (185.1 + 185.1) * (555.3 - 611.4) + (185.1 + 177.1) * (611.4 - 611.4) + (177.1 + 152.4) * (611.4 - 635.8) + (152.4 + 104.8) * (635.8 - 635.8) + (104.8 + 80) * (635.8 - 611.4) + (80 + 44.3) * (611.4 - 611.4) + (44.3 + 44.3) * (611.4 - 127.2) + (44.3 + 232) * (127.2 - 127.2) + (232 + 232) * (127.2 - 79.8) + (232 + 379.8) * (79.8 - 79.8)) * 0.5 * 0.00694$

# 303 Nostalgia Lane, Zebulon, Wake County, North Carolina, United States, 27597

Gross Living Area: 1764 sq. ft

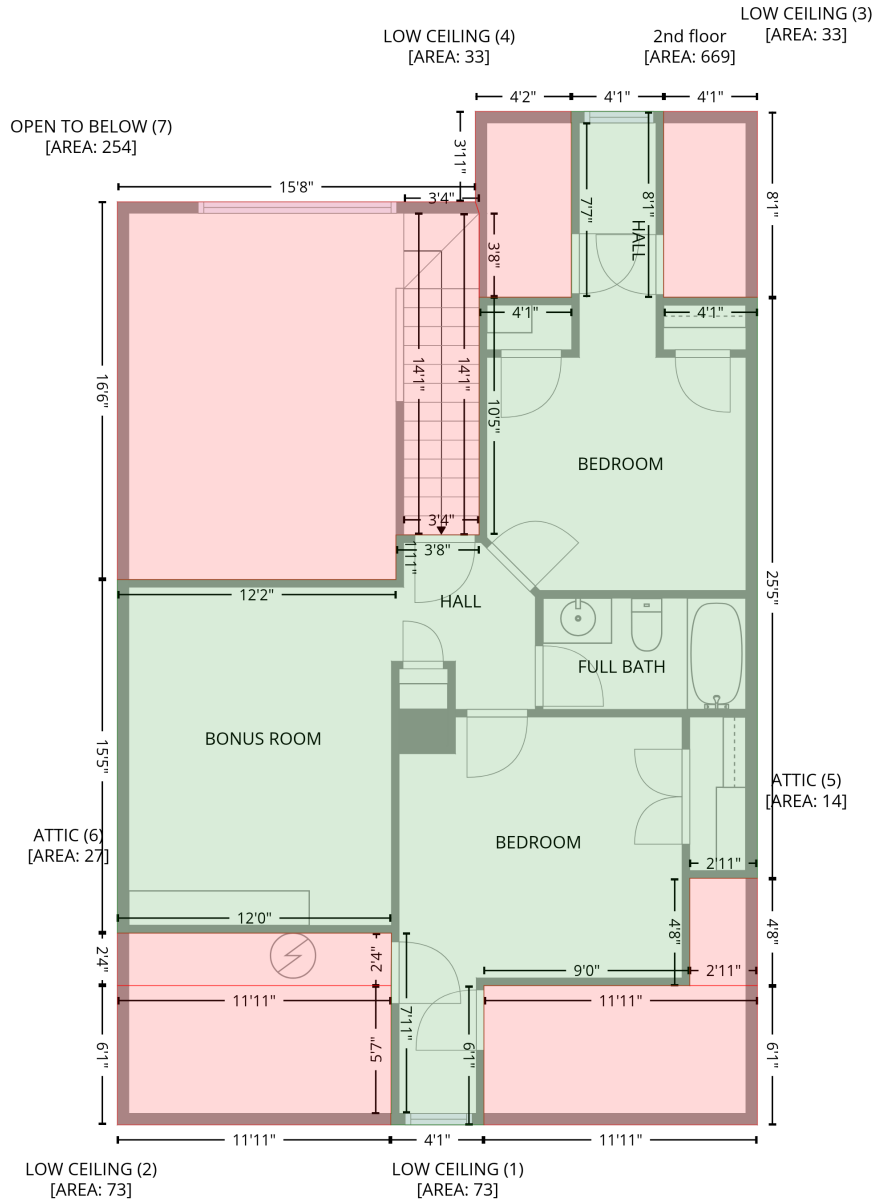
## Level 1

Space	Area (sq. ft)	Calculation <small>Coordinate Polygon Area Algorithm using inches</small>
GARAGE (Non-living area)	241	$-\left((379.8 + 379.8) * (536.6 - 775) + (379.8 + 233.9) * (775 - 775) + (233.9 + 233.9) * (775 - 549.3) + (233.9 + 239.9) * (549.3 - 549.3) + (239.9 + 239.9) * (549.3 - 536.6) + (239.9 + 379.8) * (536.6 - 536.6)\right) * 0.5 * 0.00694$
UNDEFINED (Non-living area)	33	$-\left((94.4 + 94.4) * (31.4 - 127.2) + (94.4 + 44.3) * (127.2 - 127.2) + (44.3 + 44.3) * (127.2 - 31.4) + (44.3 + 94.4) * (31.4 - 31.4)\right) * 0.5 * 0.00694$
PATIO (Non-living area)	194	$-\left((313.3 + 313.3) * (-17.8 - 79.7) + (313.3 + 232) * (79.7 - 79.8) + (232 + 232) * (79.8 - 127.2) + (232 + 94.3) * (127.2 - 127.2) + (94.3 + 94.4) * (127.2 - 31.4) + (94.4 + 94.4) * (31.4 - -17.8) + (94.4 + 313.3) * (-17.8 - -17.8)\right) * 0.5 * 0.00694$
PORCH (Non-living area)	26	$-\left((185.1 + 233.9) * (555.3 - 555.4) + (233.9 + 233.9) * (555.4 - 633.4) + (233.9 + 185.1) * (633.4 - 633.4) + (185.1 + 185.1) * (633.4 - 555.3)\right) * 0.5 * 0.00694$

# 303 Nostalgia Lane, Zebulon, Wake County, North Carolina, United States, 27597

Gross Living Area: 1764 sq. ft

## Level 2



Space	Area (sq. ft)	Calculation
2nd floor (Living area)	669	Coordinate Polygon Area Algorithm using inches $-((330.7 + 330.7) * (79.8 - 177.3) + (330.7 + 379.8) * (177.3 - 177.3) + (379.8 + 379.8) * (177.3 - 482) + (379.8 + 344.4) * (482 - 482) + (344.4 + 344.4) * (482 - 538.3) + (344.4 + 236.5) * (538.3 - 538.3) + (236.5 + 236.5) * (538.3 - 611.4) + (236.5 + 187.6) * (611.4 - 611.4) + (187.6 + 187.6) * (611.4 - 605.4) + (187.6 + 188) * (605.4 - 605.4) + (188 + 188) * (605.4 - 510.8) + (188 + 44.3) * (510.8 - 510.8) + (44.3 + 44.3) * (510.8 - 325.4) + (44.3 + 190.4) * (325.4 - 325.4) + (190.4 + 190.4) * (325.4 - 302) + (190.4 + 234) * (302 - 302) + (234 + 234) * (302 - 177.3) + (234 + 282.5) * (177.3 - 177.3) + (282.5 + 282.5) * (177.3 - 85.8) + (282.5 + 282.1) * (85.8 - 85.8) + (282.1 + 282.1) * (85.8 - 79.8) + (282.1 + 330.7) * (79.8 - 79.8) * 0.5 * 0.00694$

# 303 Nostalgia Lane, Zebulon, Wake County, North Carolina, United States, 27597

Gross Living Area: 1764 sq. ft

## Level 2

Space	Area (sq. ft)	Calculation <small>Coordinate Polygon Area Algorithm using inches</small>
LOW CEILING (Non-living area)	73	$-((379.8 + 379.8) * (538.3 - 611.4) + (379.8 + 236.5) * (611.4 - 611.4) + (236.5 + 236.5) * (611.4 - 538.3) + (236.5 + 379.8) * (538.3 - 538.3)) * 0.5 * 0.00694$
LOW CEILING (Non-living area)	73	$-((187.7 + 187.6) * (538.3 - 605.4) + (187.6 + 187.6) * (605.4 - 611.4) + (187.6 + 44.3) * (611.4 - 611.4) + (44.3 + 44.3) * (611.4 - 538.3) + (44.3 + 187.7) * (538.3 - 538.3)) * 0.5 * 0.00694$
LOW CEILING (Non-living area)	33	$-((379.8 + 379.8) * (79.8 - 177.3) + (379.8 + 330.7) * (177.3 - 177.3) + (330.7 + 330.7) * (177.3 - 79.8) + (330.7 + 379.8) * (79.8 - 79.8)) * 0.5 * 0.00694$
LOW CEILING (Non-living area)	33	$-((282.1 + 282.1) * (79.8 - 177.3) + (282.1 + 234) * (177.3 - 177.3) + (234 + 234) * (177.3 - 133.2) + (234 + 232) * (133.2 - 127.2) + (232 + 232) * (127.2 - 79.8) + (232 + 282.1) * (79.8 - 79.8)) * 0.5 * 0.00694$
ATTIC (Non-living area)	14	$-((379.8 + 379.8) * (482 - 538.3) + (379.8 + 344.4) * (538.3 - 538.3) + (344.4 + 344.4) * (538.3 - 482) + (344.4 + 379.8) * (482 - 482)) * 0.5 * 0.00694$
ATTIC (Non-living area)	27	$-((188 + 187.7) * (510.8 - 538.3) + (187.7 + 44.3) * (538.3 - 538.3) + (44.3 + 44.3) * (538.3 - 510.8) + (44.3 + 188) * (510.8 - 510.8)) * 0.5 * 0.00694$
OPEN TO BELOW (Non-living area)	254	$-((232 + 234) * (127.2 - 133.2) + (234 + 234) * (133.2 - 302) + (234 + 190.4) * (302 - 302) + (190.4 + 190.4) * (302 - 325.4) + (190.4 + 44.3) * (325.4 - 325.4) + (44.3 + 44.3) * (325.4 - 127.2) + (44.3 + 232) * (127.2 - 127.2)) * 0.5 * 0.00694$