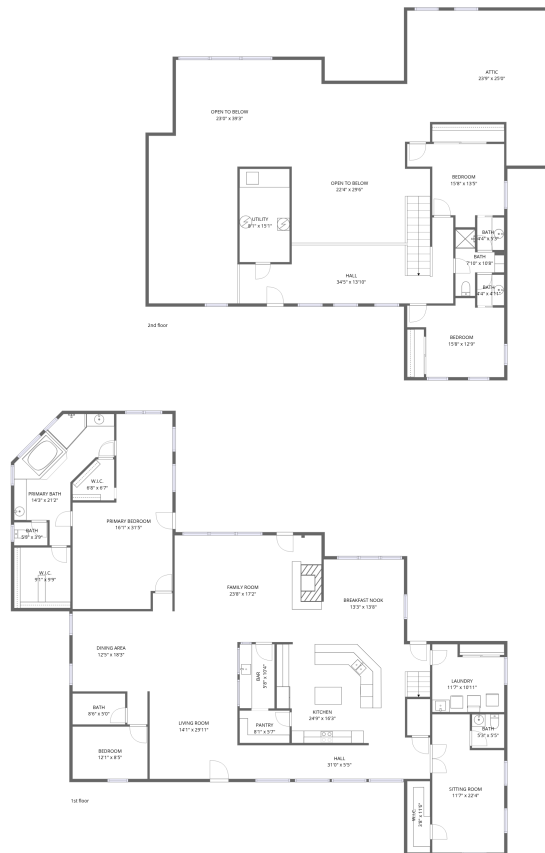


Home data report

602 Mills Pl, Corsicana, TX, US



Total Area: 3990 sq. ft

1st Floor: 3159 sq. ft, 2nd Floor: 831 sq. ft

Excluded: Utility 133 sq. ft, Open to below 1194 sq. ft, Attic 490 sq. ft, Walls: 276 sq. ft

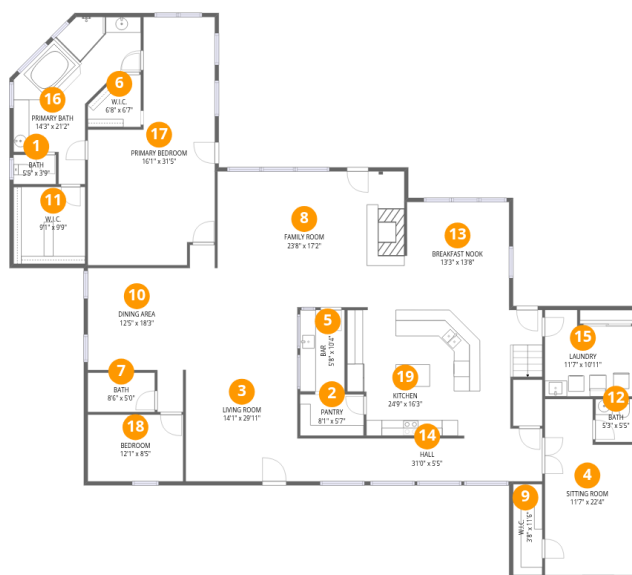
Property summary

 **2** Floors

 **4** Bedrooms

 **2** Bathrooms

 **1** Half baths



Room dimensions

Floor 1

Total:3159sqft Excluded: 0sqft

#		Dimensions	sqft	Counted as living area
1	Bath	5'5" x 3'9"	20 sq. ft	Yes
2	Pantry	8'1" x 5'7"	45 sq. ft	Yes
3	Living Room	14'1" x 29'11"	423 sq. ft	Yes
4	Sitting Room	11'7" x 22'4"	259 sq. ft	Yes
5	Bar	5'8" x 10'4"	58 sq. ft	Yes
6	W.I.C.	6'8" x 6'7"	44 sq. ft	Yes
7	Bath	8'6" x 5'0"	42 sq. ft	Yes
8	Family Room	23'8" x 17'2"	406 sq. ft	Yes
9	W.I.C.	3'8" x 11'6"	43 sq. ft	Yes
10	Dining Area	12'5" x 18'3"	227 sq. ft	Yes
11	W.I.C.	9'1" x 9'9"	88 sq. ft	Yes

Home data report

602 Mills Pl,Corsicana,TX,US

#		Dimensions	sqft	Counted as living area
12	Bath	5'3" x 5'5"	28 sq. ft	Yes
13	Breakfast Nook	13'3" x 13'8"	181 sq. ft	Yes
14	Hall	31'0" x 5'5"	169 sq. ft	Yes
15	Laundry	11'7" x 10'11"	127 sq. ft	Yes
16	Primary Bath	14'3" x 21'2"	302 sq. ft	Yes
17	Primary Bedroom	16'1" x 31'5"	507 sq. ft	Yes
18	Bedroom	12'1" x 8'5"	102 sq. ft	Yes
19	Kitchen	24'9" x 16'3"	402 sq. ft	Yes



Room dimensions

Floor 2

Total: 831 sqft

Excluded: 1817 sqft

#		Dimensions	sqft	Counted as living area
20	Hall	34'5" x 13'10"	478 sq. ft	Yes
21	Bedroom	15'8" x 13'5"	210 sq. ft	Yes
22	Bedroom	15'8" x 12'9"	199 sq. ft	Yes
23	Utility	8'1" x 15'1"	121 sq. ft	No
24	Attic	23'9" x 25'0"	594 sq. ft	No
25	Bath	4'4" x 5'3"	23 sq. ft	Yes
26	Open To Below	22'4" x 29'6"	658 sq. ft	No
27	Bath	7'10" x 10'8"	84 sq. ft	Yes
28	Open To Below	23'0" x 39'3"	904 sq. ft	No
29	Bath	4'4" x 4'11"	22 sq. ft	Yes

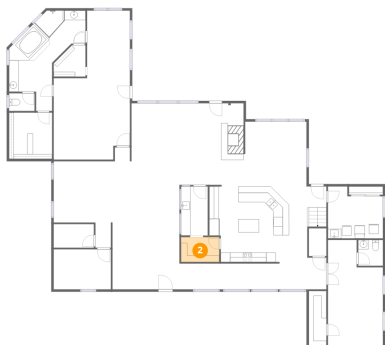
1 Floor 1 - Bath



Dimensions: 5'5" x 3'9"
Area: 20 sq. ft
Counted as living area: Yes

Heated: Yes
Finished: Yes
Enclosed: Yes
Contiguous: Yes
Permitted: Yes
Wet space: Yes
Addition: No
Conversion: No

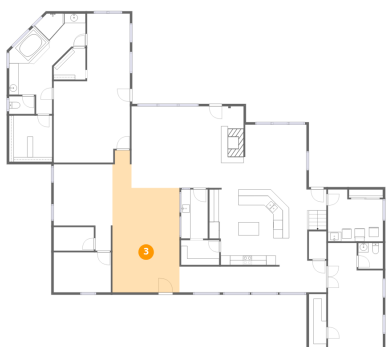
2 Floor 1 - Pantry



Dimensions: 8'1" x 5'7"
Area: 45 sq. ft
Counted as living area: Yes

Heated: Yes
Finished: Yes
Enclosed: Yes
Contiguous: Yes
Permitted: Yes
Wet space: No
Addition: No
Conversion: No

3 Floor 1 - Living Room



Dimensions: 14'1" x 29'11"
Area: 423 sq. ft
Counted as living area: Yes

Heated: Yes
Finished: Yes
Enclosed: Yes
Contiguous: Yes
Permitted: Yes
Wet space: No
Addition: No
Conversion: No

4 Floor 1 - Sitting Room



Dimensions: 11'7" x 22'4"
Area: 259 sq. ft
Counted as living area: Yes

Heated: Yes
Finished: Yes
Enclosed: Yes
Contiguous: Yes
Permitted: Yes
Wet space: No
Addition: No
Conversion: No

5 Floor 1 - Bar



Dimensions: 5'8" x 10'4"
Area: 58 sq. ft
Counted as living area: Yes

Heated: Yes
Finished: Yes
Enclosed: Yes
Contiguous: Yes
Permitted: Yes
Wet space: No
Addition: No
Conversion: No

6 Floor 1 - W.I.C.



Dimensions: 6'8" x 6'7"
Area: 44 sq. ft
Counted as living area: Yes

Heated: Yes
Finished: Yes
Enclosed: Yes
Contiguous: Yes
Permitted: Yes
Wet space: No
Addition: No
Conversion: No

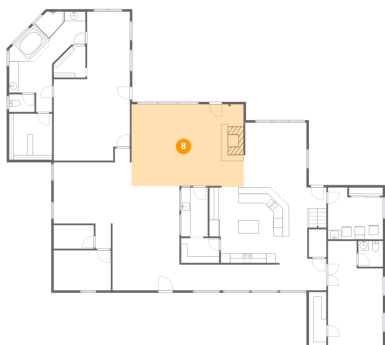
7 Floor 1 - Bath



Dimensions: 8'6" x 5'0"
Area: 42 sq. ft
Counted as living area: Yes

Heated: Yes
Finished: Yes
Enclosed: Yes
Contiguous: Yes
Permitted: Yes
Wet space: Yes
Addition: No
Conversion: No

8 Floor 1 - Family Room



Dimensions: 23'8" x 17'2"
Area: 406 sq. ft
Counted as living area: Yes

Heated: Yes
Finished: Yes
Enclosed: Yes
Contiguous: Yes
Permitted: Yes
Wet space: No
Addition: No
Conversion: No

9 Floor 1 - W.I.C.



Dimensions: 3'8" x 11'6"
Area: 43 sq. ft
Counted as living area: Yes

Heated: Yes
Finished: Yes
Enclosed: Yes
Contiguous: Yes
Permitted: Yes
Wet space: No
Addition: No
Conversion: No

10 Floor 1 - Dining Area



Dimensions: 12'5" x 18'3"
Area: 227 sq. ft
Counted as living area: Yes

Heated: Yes
Finished: Yes
Enclosed: Yes
Contiguous: Yes
Permitted: Yes
Wet space: No
Addition: No
Conversion: No

11 Floor 1 - W.I.C.



Dimensions: 9'1" x 9'9"
Area: 88 sq. ft
Counted as living area: Yes

Heated: Yes
Finished: Yes
Enclosed: Yes
Contiguous: Yes
Permitted: Yes
Wet space: No
Addition: No
Conversion: No

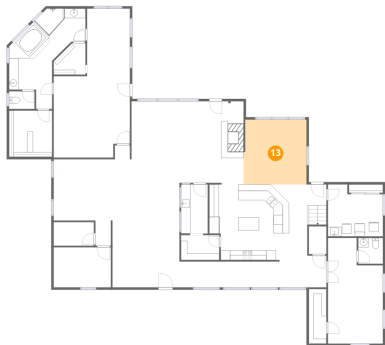
12 Floor 1 - Bath



Dimensions: 5'3" x 5'5"
Area: 28 sq. ft
Counted as living area: Yes

Heated: Yes
Finished: Yes
Enclosed: Yes
Contiguous: Yes
Permitted: Yes
Wet space: Yes
Addition: No
Conversion: No

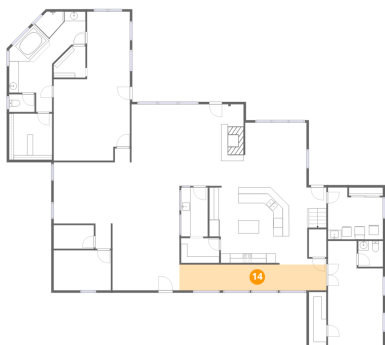
13 Floor 1 - Breakfast Nook



Dimensions: 13'3" x 13'8"
Area: 181 sq. ft
Counted as living area: Yes

Heated: Yes
Finished: Yes
Enclosed: Yes
Contiguous: Yes
Permitted: Yes
Wet space: No
Addition: No
Conversion: No

14 Floor 1 - Hall



Dimensions: 31'0" x 5'5"
Area: 169 sq. ft
Counted as living area: Yes

Heated: Yes
Finished: Yes
Enclosed: Yes
Contiguous: Yes
Permitted: Yes
Wet space: No
Addition: No
Conversion: No

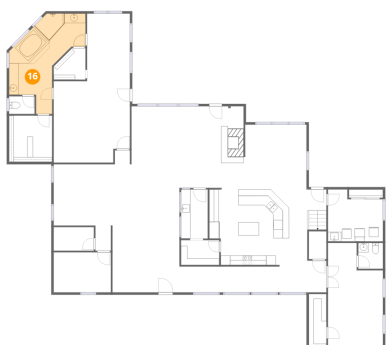
15 Floor 1 - Laundry



Dimensions: 11'7" x 10'11"
Area: 127 sq. ft
Counted as living area: Yes

Heated: Yes
Finished: Yes
Enclosed: Yes
Contiguous: Yes
Permitted: Yes
Wet space: No
Addition: No
Conversion: No

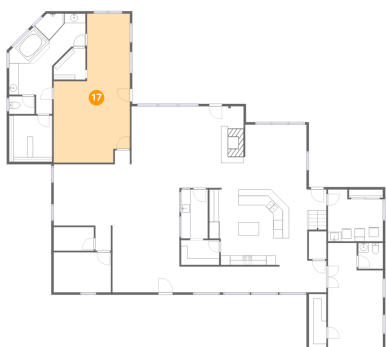
16 Floor 1 - Primary Bath



Dimensions: 14'3" x 21'2"
Area: 302 sq. ft
Counted as living area: Yes

Heated: Yes
Finished: Yes
Enclosed: Yes
Contiguous: Yes
Permitted: Yes
Wet space: Yes
Addition: No
Conversion: No

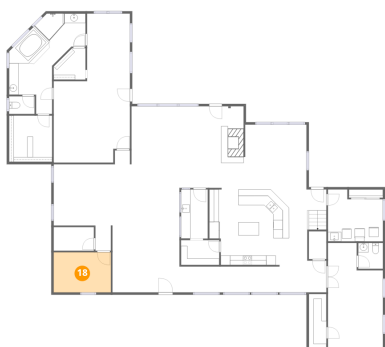
17 Floor 1 - Primary Bedroom



Dimensions: 16'1" x 31'5"
Area: 507 sq. ft
Counted as living area: Yes

Heated: Yes
Finished: Yes
Enclosed: Yes
Contiguous: Yes
Permitted: Yes
Wet space: No
Addition: No
Conversion: No

18 Floor 1 - Bedroom



Dimensions: 12'1" x 8'5"
Area: 102 sq. ft
Counted as living area: Yes

Heated: Yes
Finished: Yes
Enclosed: Yes
Contiguous: Yes
Permitted: Yes
Wet space: No
Addition: No
Conversion: No

19 Floor 1 - Kitchen



Dimensions: 24'9" x 16'3"
Area: 402 sq. ft
Counted as living area: Yes

Heated: Yes
Finished: Yes
Enclosed: Yes
Contiguous: Yes
Permitted: Yes
Wet space: No
Addition: No
Conversion: No

20 Floor 2 - Hall



Dimensions: 34'5" x 13'10"
Area: 478 sq. ft
Counted as living area: Yes

Heated: Yes
Finished: Yes
Enclosed: Yes
Contiguous: Yes
Permitted: Yes
Wet space: No
Addition: No
Conversion: No

21 Floor 2 - Bedroom



Dimensions: 15'8" x 13'5"
Area: 210 sq. ft
Counted as living area: Yes

Heated: Yes
Finished: Yes
Enclosed: Yes
Contiguous: Yes
Permitted: Yes
Wet space: No
Addition: No
Conversion: No

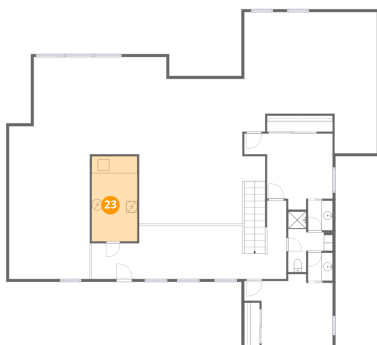
22 Floor 2 - Bedroom



Dimensions: 15'8" x 12'9"
Area: 199 sq. ft
Counted as living area: Yes

Heated: Yes
Finished: Yes
Enclosed: Yes
Contiguous: Yes
Permitted: Yes
Wet space: No
Addition: No
Conversion: No

23 Floor 2 - Utility



Dimensions: 8'1" x 15'1"
Area: 121 sq. ft
Counted as living area: No

Heated: Yes
Finished: No
Enclosed: Yes
Contiguous: Yes
Permitted: Yes
Wet space: No
Addition: No
Conversion: No

24 Floor 2 - Attic



Dimensions: 23'9" x 25'0"
Area: 594 sq. ft
Counted as living area: No

Heated: No
Finished: No
Enclosed: Yes
Contiguous: Yes
Permitted: Yes
Wet space: No
Addition: No
Conversion: No

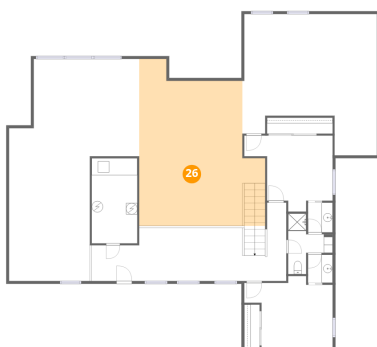
25 Floor 2 - Bath



Dimensions: 4'4" x 5'3"
Area: 23 sq. ft
Counted as living area: Yes

Heated: Yes
Finished: Yes
Enclosed: Yes
Contiguous: Yes
Permitted: Yes
Wet space: Yes
Addition: No
Conversion: No

26 Floor 2 - Open To Below



Dimensions: 22'4" x 29'6"
Area: 658 sq. ft
Counted as living area: No

Heated: No
Finished: No
Enclosed: No
Contiguous: Yes
Permitted: No
Wet space: No
Addition: No
Conversion: No

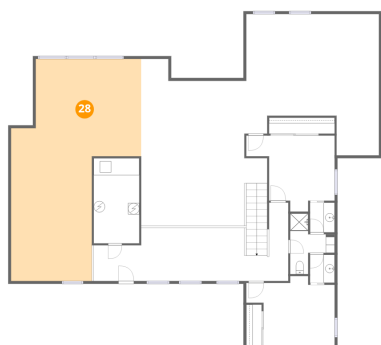
27 Floor 2 - Bath



Dimensions: 7'10" x 10'8"
Area: 84 sq. ft
Counted as living area: Yes

Heated: Yes
Finished: Yes
Enclosed: Yes
Contiguous: Yes
Permitted: Yes
Wet space: Yes
Addition: No
Conversion: No

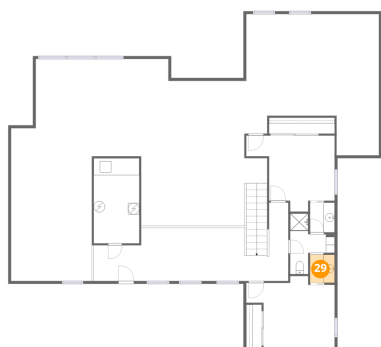
28 Floor 2 - Open To Below



Dimensions: 23'0" x 39'3"
Area: 904 sq. ft
Counted as living area: No

Heated: No
Finished: No
Enclosed: No
Contiguous: Yes
Permitted: No
Wet space: No
Addition: No
Conversion: No

29 Floor 2 - Bath



Dimensions: 4'4" x 4'11"
Area: 22 sq. ft
Counted as living area: Yes

Heated: Yes
Finished: Yes
Enclosed: Yes
Contiguous: Yes
Permitted: Yes
Wet space: Yes
Addition: No
Conversion: No