

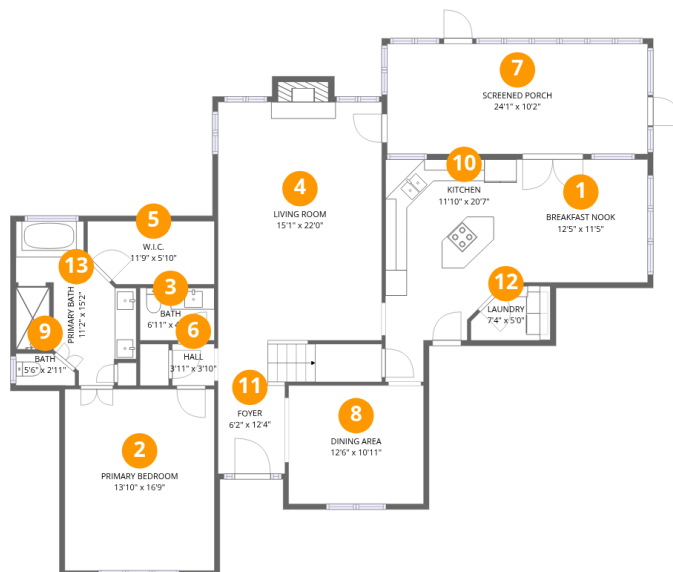
**Total Area: 2278 sq. ft**

1st Floor: 1493 sq. ft, 2nd Floor: 785 sq. ft

Excluded: Screened porch 246 sq. ft, Fireplace 11 sq. ft, Open to below 392 sq. ft, Walls: 206 sq. ft

**Property summary**





## Room dimensions

Floor 1

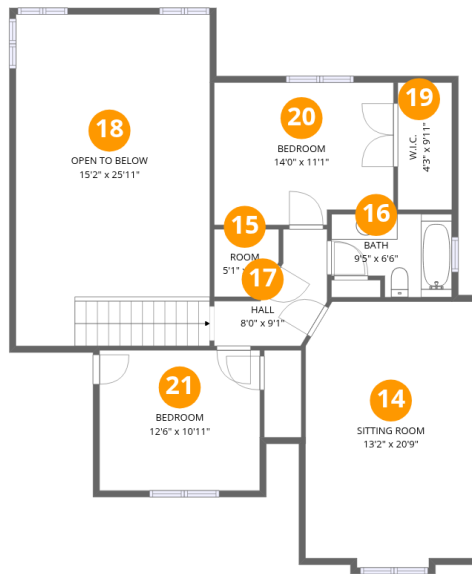
Total: 1493sqft Excluded: 257sqft

#		Dimensions	sqft	Counted as living area
1	Breakfast Nook	12'5" x 11'5"	141 sq. ft	Yes
2	Primary Bedroom	13'10" x 16'9"	232 sq. ft	Yes
3	Bath	6'11" x 4'10"	33 sq. ft	Yes
4	Living Room	15'1" x 22'0"	333 sq. ft	Yes
5	W.I.C.	11'9" x 5'10"	68 sq. ft	Yes
6	Hall	3'11" x 3'10"	15 sq. ft	Yes
7	Screened Porch	24'1" x 10'2"	246 sq. ft	No
8	Dining Area	12'6" x 10'11"	137 sq. ft	Yes
9	Bath	5'6" x 2'11"	16 sq. ft	Yes
10	Kitchen	11'10" x 20'7"	244 sq. ft	Yes
11	Foyer	6'2" x 12'4"	76 sq. ft	Yes

Home data report

**8399 Walnut Trace Cove, Cordova, TN, US**

#		Dimensions	sqft	Counted as living area
12	Laundry	7'4" x 5'0"	37 sq. ft	Yes
13	Primary Bath	11'2" x 15'2"	169 sq. ft	Yes



## Room dimensions

Floor 2

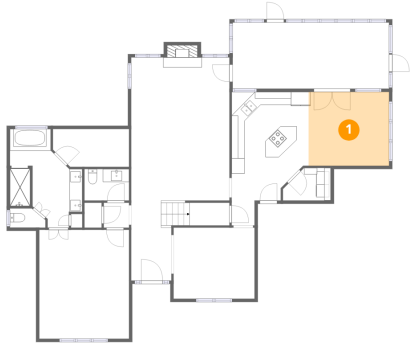
Total:785sqft

Excluded: 392sqft

#		Dimensions	sqft	Counted as living area
14	Sitting Room	13'2" x 20'9"	273 sq. ft	Yes
15	Room	5'1" x 5'3"	27 sq. ft	Yes
16	Bath	9'5" x 6'6"	61 sq. ft	Yes
17	Hall	8'0" x 9'1"	73 sq. ft	Yes
18	Open To Below	15'2" x 25'11"	392 sq. ft	No
19	W.I.C.	4'3" x 9'11"	42 sq. ft	Yes
20	Bedroom	14'0" x 11'1"	156 sq. ft	Yes
21	Bedroom	12'6" x 10'11"	137 sq. ft	Yes

## 1 Floor 1 - Breakfast Nook

---

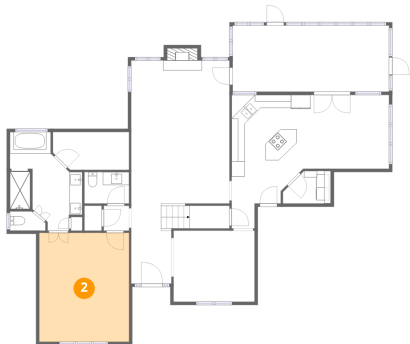


Dimensions: 12'5" x 11'5"  
Area: 141 sq. ft  
Counted as living area: Yes

Heated: Yes  
Finished: Yes  
Enclosed: Yes  
Contiguous: Yes  
Permitted: Yes  
Wet space: No  
Addition: No  
Conversion: No

## 2 Floor 1 - Primary Bedroom

---



Dimensions: 13'10" x 16'9"  
Area: 232 sq. ft  
Counted as living area: Yes

Heated: Yes  
Finished: Yes  
Enclosed: Yes  
Contiguous: Yes  
Permitted: Yes  
Wet space: No  
Addition: No  
Conversion: No

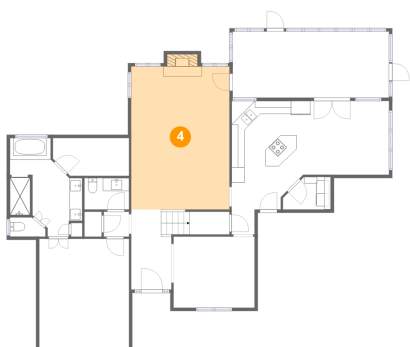
### 3 Floor 1 - Bath



Dimensions: 6'11" x 4'10"  
Area: 33 sq. ft  
Counted as living area: Yes

Heated: Yes  
Finished: Yes  
Enclosed: Yes  
Contiguous: Yes  
Permitted: Yes  
Wet space: Yes  
Addition: No  
Conversion: No

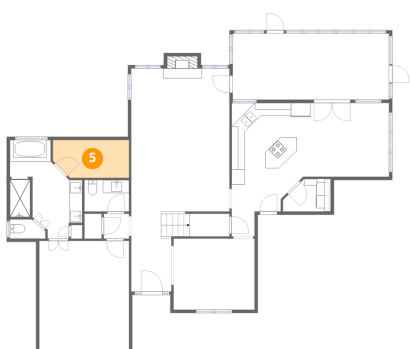
### 4 Floor 1 - Living Room



Dimensions: 15'1" x 22'0"  
Area: 333 sq. ft  
Counted as living area: Yes

Heated: Yes  
Finished: Yes  
Enclosed: Yes  
Contiguous: Yes  
Permitted: Yes  
Wet space: No  
Addition: No  
Conversion: No

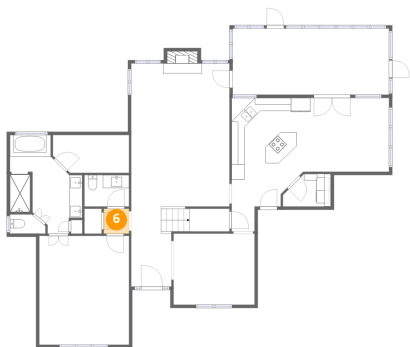
### 5 Floor 1 - W.I.C.



Dimensions: 11'9" x 5'10"  
Area: 68 sq. ft  
Counted as living area: Yes

Heated: Yes  
Finished: Yes  
Enclosed: Yes  
Contiguous: Yes  
Permitted: Yes  
Wet space: No  
Addition: No  
Conversion: No

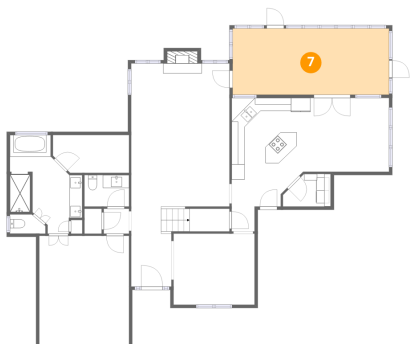
### 6 Floor 1 - Hall



Dimensions: 3'11" x 3'10"  
Area: 15 sq. ft  
Counted as living area: Yes

Heated: Yes  
Finished: Yes  
Enclosed: Yes  
Contiguous: Yes  
Permitted: Yes  
Wet space: No  
Addition: No  
Conversion: No

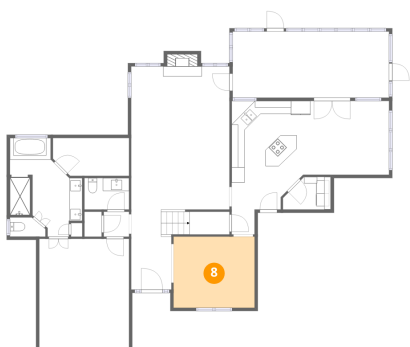
### 7 Floor 1 - Screened Porch



Dimensions: 24'1" x 10'2"  
Area: 246 sq. ft  
Counted as living area: No

Heated: No  
Finished: No  
Enclosed: No  
Contiguous: Yes  
Permitted: Yes  
Wet space: No  
Addition: No  
Conversion: No

### 8 Floor 1 - Dining Area



Dimensions: 12'6" x 10'11"  
Area: 137 sq. ft  
Counted as living area: Yes

Heated: Yes  
Finished: Yes  
Enclosed: Yes  
Contiguous: Yes  
Permitted: Yes  
Wet space: No  
Addition: No  
Conversion: No

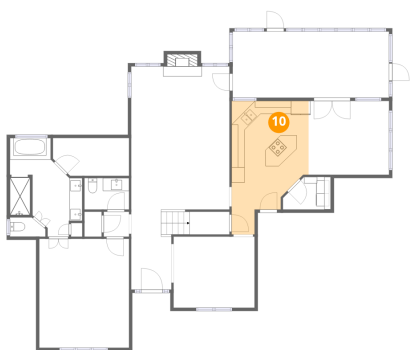
**9** Floor 1 - Bath



Dimensions: 5'6" x 2'11"  
Area: 16 sq. ft  
Counted as living area: Yes

Heated: Yes  
Finished: Yes  
Enclosed: Yes  
Contiguous: Yes  
Permitted: Yes  
Wet space: Yes  
Addition: No  
Conversion: No

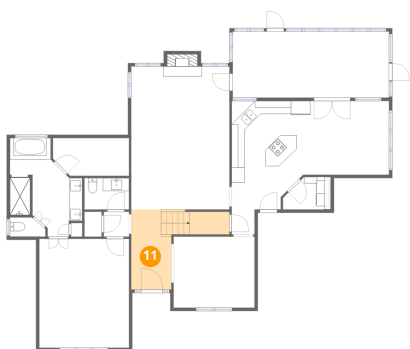
**10** Floor 1 - Kitchen



Dimensions: 11'10" x 20'7"  
Area: 244 sq. ft  
Counted as living area: Yes

Heated: Yes  
Finished: Yes  
Enclosed: Yes  
Contiguous: Yes  
Permitted: Yes  
Wet space: No  
Addition: No  
Conversion: No

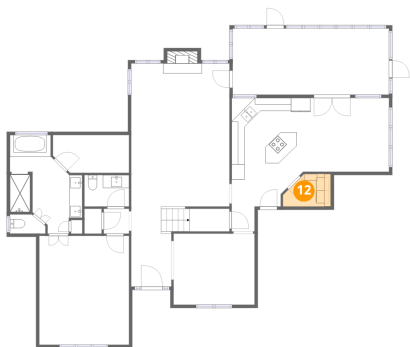
**11** Floor 1 - Foyer



Dimensions: 6'2" x 12'4"  
Area: 76 sq. ft  
Counted as living area: Yes

Heated: Yes  
Finished: Yes  
Enclosed: Yes  
Contiguous: Yes  
Permitted: Yes  
Wet space: No  
Addition: No  
Conversion: No

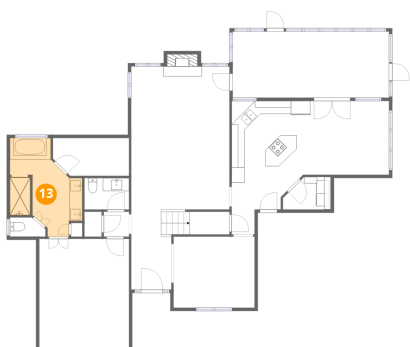
### 12 Floor 1 - Laundry



Dimensions: 7'4" x 5'0"  
Area: 37 sq. ft  
Counted as living area: Yes

Heated: Yes  
Finished: Yes  
Enclosed: Yes  
Contiguous: Yes  
Permitted: Yes  
Wet space: No  
Addition: No  
Conversion: No

### 13 Floor 1 - Primary Bath



Dimensions: 11'2" x 15'2"  
Area: 169 sq. ft  
Counted as living area: Yes

Heated: Yes  
Finished: Yes  
Enclosed: Yes  
Contiguous: Yes  
Permitted: Yes  
Wet space: Yes  
Addition: No  
Conversion: No

### 14 Floor 2 - Sitting Room



Dimensions: 13'2" x 20'9"  
Area: 273 sq. ft  
Counted as living area: Yes

Heated: Yes  
Finished: Yes  
Enclosed: Yes  
Contiguous: Yes  
Permitted: Yes  
Wet space: No  
Addition: No  
Conversion: No

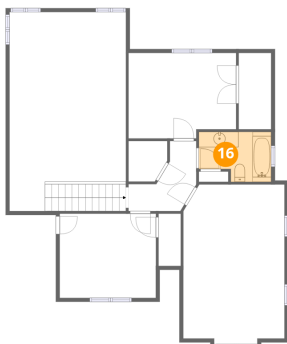
**15** Floor 2 - Room



Dimensions: 5'1" x 5'3"  
Area: 27 sq. ft  
Counted as living area: Yes

Heated: Yes  
Finished: Yes  
Enclosed: Yes  
Contiguous: Yes  
Permitted: Yes  
Wet space: No  
Addition: No  
Conversion: No

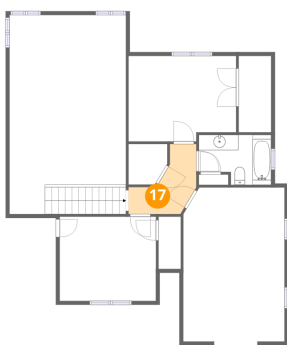
**16** Floor 2 - Bath



Dimensions: 9'5" x 6'6"  
Area: 61 sq. ft  
Counted as living area: Yes

Heated: Yes  
Finished: Yes  
Enclosed: Yes  
Contiguous: Yes  
Permitted: Yes  
Wet space: Yes  
Addition: No  
Conversion: No

**17** Floor 2 - Hall



Dimensions: 8'0" x 9'1"  
Area: 73 sq. ft  
Counted as living area: Yes

Heated: Yes  
Finished: Yes  
Enclosed: Yes  
Contiguous: Yes  
Permitted: Yes  
Wet space: No  
Addition: No  
Conversion: No

**18** Floor 2 - Open To Below

---



Dimensions: 15'2" x 25'11"  
Area: 392 sq. ft  
Counted as living area: No

Heated: No  
Finished: No  
Enclosed: No  
Contiguous: Yes  
Permitted: No  
Wet space: No  
Addition: No  
Conversion: No

**19** Floor 2 - W.I.C.

---



Dimensions: 4'3" x 9'11"  
Area: 42 sq. ft  
Counted as living area: Yes

Heated: Yes  
Finished: Yes  
Enclosed: Yes  
Contiguous: Yes  
Permitted: Yes  
Wet space: No  
Addition: No  
Conversion: No

**20** Floor 2 - Bedroom

---



Dimensions: 14'0" x 11'1"  
Area: 156 sq. ft  
Counted as living area: Yes

Heated: Yes  
Finished: Yes  
Enclosed: Yes  
Contiguous: Yes  
Permitted: Yes  
Wet space: No  
Addition: No  
Conversion: No

**21** Floor 2 - Bedroom

---



**Dimensions:** 12'6" x 10'11"  
**Area:** 137 sq. ft  
**Counted as living area:** Yes

**Heated:** Yes  
**Finished:** Yes  
**Enclosed:** Yes  
**Contiguous:** Yes  
**Permitted:** Yes  
**Wet space:** No  
**Addition:** No  
**Conversion:** No