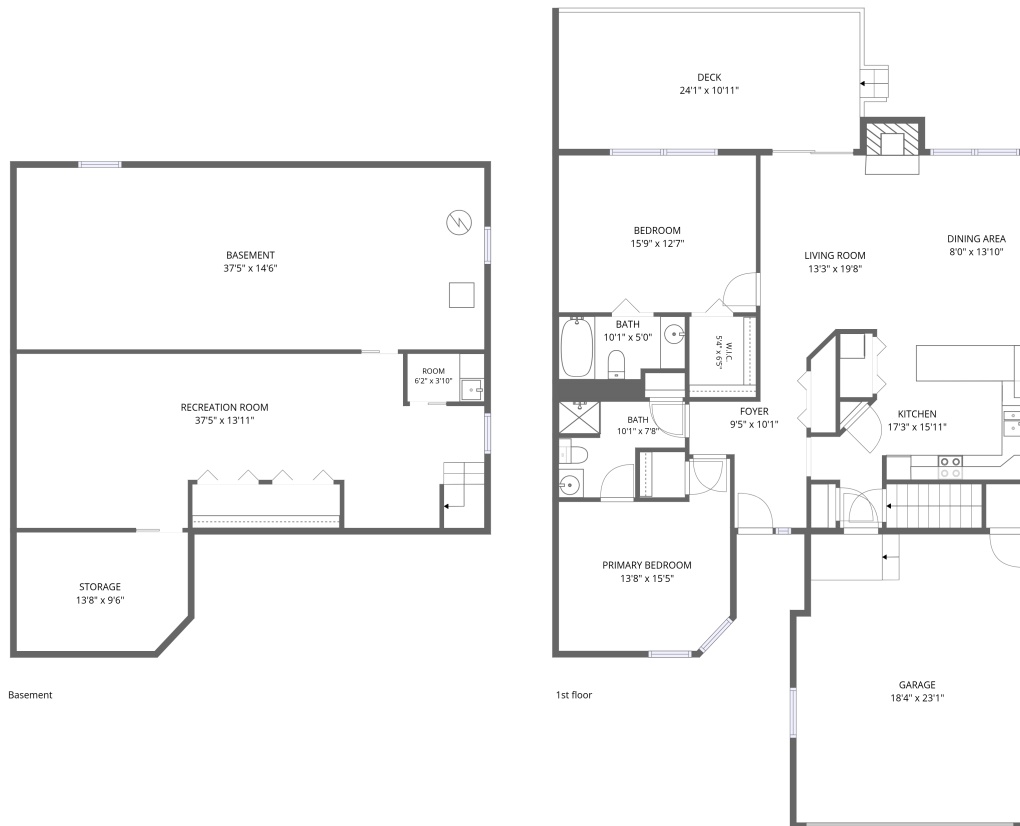


Home data report

2443 Shoreham Highlands St, St Joseph, MI, US



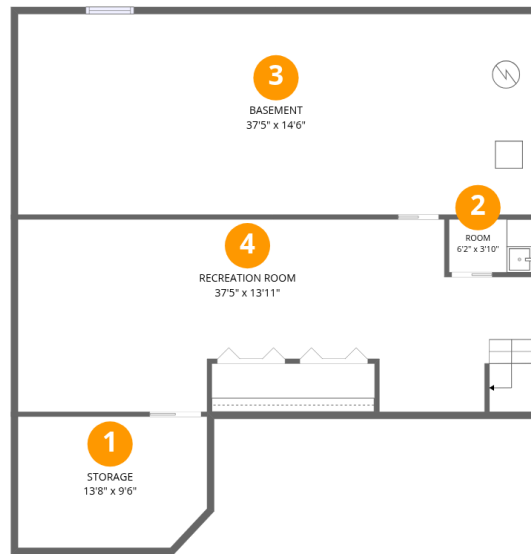
Total Area: 1772 sq. ft

Basement: 538 sq. ft, 1st Floor: 1234 sq. ft

Excluded: Storage 127 sq. ft, Basement 544 sq. ft, Undefined 11 sq. ft, Deck 268 sq. ft, Garage 417 sq. ft, Fireplace 13 sq. ft, Walls: 169 sq. ft

Property summary





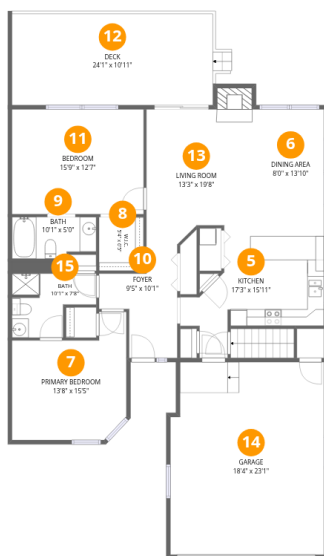
Room dimensions

Floor 1 Below grade

Total: 538 sqft

Excluded: 671 sqft

#		Dimensions	sqft	Counted as living area
1	Storage	13'8" x 9'6"	127 sq. ft	No
2	Room	6'2" x 3'10"	24 sq. ft	Yes
3	Basement	37'5" x 14'6"	544 sq. ft	No
4	Recreation Room	37'5" x 13'11"	445 sq. ft	Yes



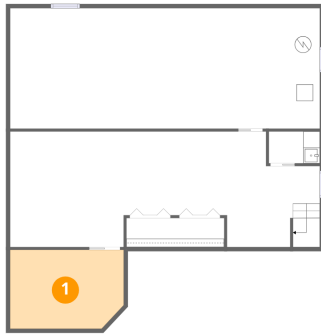
Room dimensions

Floor 2

Total: 1234sqft Excluded: 709sqft

#		Dimensions	sqft	Counted as living area
5	Kitchen	17'3" x 15'11"	179 sq. ft	Yes
6	Dining Area	8'0" x 13'10"	111 sq. ft	Yes
7	Primary Bedroom	13'8" x 15'5"	171 sq. ft	Yes
8	W.I.C.	5'4" x 6'5"	34 sq. ft	Yes
9	Bath	10'1" x 5'0"	48 sq. ft	Yes
10	Foyer	9'5" x 10'1"	74 sq. ft	Yes
11	Bedroom	15'9" x 12'7"	198 sq. ft	Yes
12	Deck	24'1" x 10'11"	268 sq. ft	No
13	Living Room	13'3" x 19'8"	219 sq. ft	Yes
14	Garage	18'4" x 23'1"	417 sq. ft	No
15	Bath	10'1" x 7'8"	61 sq. ft	Yes

1 Floor 1 - Storage



Dimensions: 13'8" x 9'6"
Area: 127 sq. ft
Counted as living area: No

Heated: No
Finished: No
Enclosed: No
Contiguous: Yes
Permitted: Yes
Wet space: No
Addition: No
Conversion: No

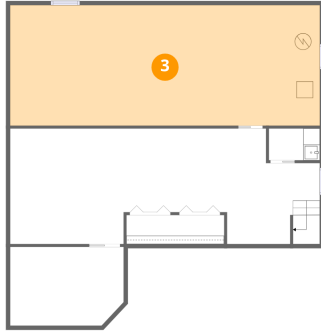
2 Floor 1 - Room



Dimensions: 6'2" x 3'10"
Area: 24 sq. ft
Counted as living area: Yes

Heated: Yes
Finished: Yes
Enclosed: Yes
Contiguous: Yes
Permitted: Yes
Wet space: No
Addition: No
Conversion: No

3 Floor 1 - Basement



Dimensions: 37'5" x 14'6"
Area: 544 sq. ft
Counted as living area: No

Heated: Yes
Finished: No
Enclosed: Yes
Contiguous: Yes
Permitted: Yes
Wet space: No
Addition: No
Conversion: No

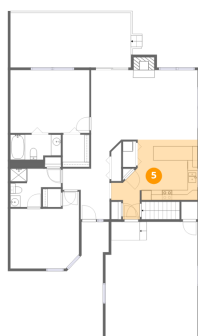
4 Floor 1 - Recreation Room



Dimensions: 37'5" x 13'11"
Area: 445 sq. ft
Counted as living area: Yes

Heated: Yes
Finished: Yes
Enclosed: Yes
Contiguous: Yes
Permitted: Yes
Wet space: No
Addition: No
Conversion: No

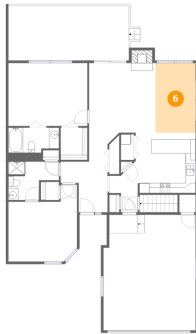
5 Floor 2 - Kitchen



Dimensions: 17'3" x 15'11"
Area: 179 sq. ft
Counted as living area: Yes

Heated: Yes
Finished: Yes
Enclosed: Yes
Contiguous: Yes
Permitted: Yes
Wet space: No
Addition: No
Conversion: No

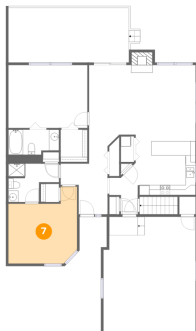
6 Floor 2 - Dining Area



Dimensions: 8'0" x 13'10"
Area: 111 sq. ft
Counted as living area: Yes

Heated: Yes
Finished: Yes
Enclosed: Yes
Contiguous: Yes
Permitted: Yes
Wet space: No
Addition: No
Conversion: No

7 Floor 2 - Primary Bedroom



Dimensions: 13'8" x 15'5"
Area: 171 sq. ft
Counted as living area: Yes

Heated: Yes
Finished: Yes
Enclosed: Yes
Contiguous: Yes
Permitted: Yes
Wet space: No
Addition: No
Conversion: No

8 Floor 2 - W.I.C.



Dimensions: 5'4" x 6'5"
Area: 34 sq. ft
Counted as living area: Yes

Heated: Yes
Finished: Yes
Enclosed: Yes
Contiguous: Yes
Permitted: Yes
Wet space: No
Addition: No
Conversion: No

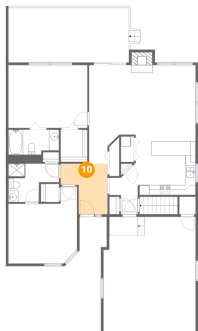
9 Floor 2 - Bath



Dimensions: 10'1" x 5'0"
Area: 48 sq. ft
Counted as living area: Yes

Heated: Yes
Finished: Yes
Enclosed: Yes
Contiguous: Yes
Permitted: Yes
Wet space: Yes
Addition: No
Conversion: No

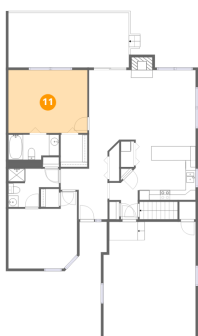
10 Floor 2 - Foyer



Dimensions: 9'5" x 10'1"
Area: 74 sq. ft
Counted as living area: Yes

Heated: Yes
Finished: Yes
Enclosed: Yes
Contiguous: Yes
Permitted: Yes
Wet space: No
Addition: No
Conversion: No

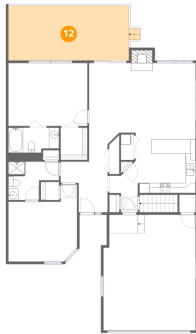
11 Floor 2 - Bedroom



Dimensions: 15'9" x 12'7"
Area: 198 sq. ft
Counted as living area: Yes

Heated: Yes
Finished: Yes
Enclosed: Yes
Contiguous: Yes
Permitted: Yes
Wet space: No
Addition: No
Conversion: No

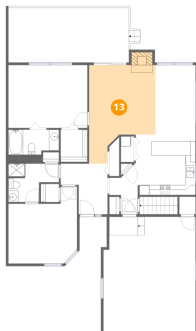
12 Floor 2 - Deck



Dimensions: 24'1" x 10'11"
Area: 268 sq. ft
Counted as living area: No

Heated: No
Finished: No
Enclosed: No
Contiguous: Yes
Permitted: Yes
Wet space: No
Addition: No
Conversion: No

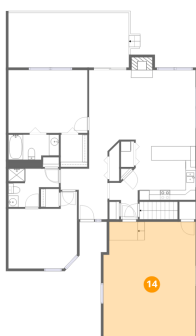
13 Floor 2 - Living Room



Dimensions: 13'3" x 19'8"
Area: 219 sq. ft
Counted as living area: Yes

Heated: Yes
Finished: Yes
Enclosed: Yes
Contiguous: Yes
Permitted: Yes
Wet space: No
Addition: No
Conversion: No

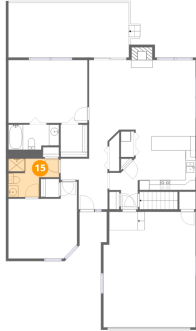
14 Floor 2 - Garage



Dimensions: 18'4" x 23'1"
Area: 417 sq. ft
Counted as living area: No

Heated: No
Finished: No
Enclosed: Yes
Contiguous: Yes
Permitted: Yes
Wet space: No
Addition: No
Conversion: No

15 Floor 2 - Bath



Dimensions: 10'1" x 7'8"
Area: 61 sq. ft
Counted as living area: Yes

Heated: Yes
Finished: Yes
Enclosed: Yes
Contiguous: Yes
Permitted: Yes
Wet space: Yes
Addition: No
Conversion: No