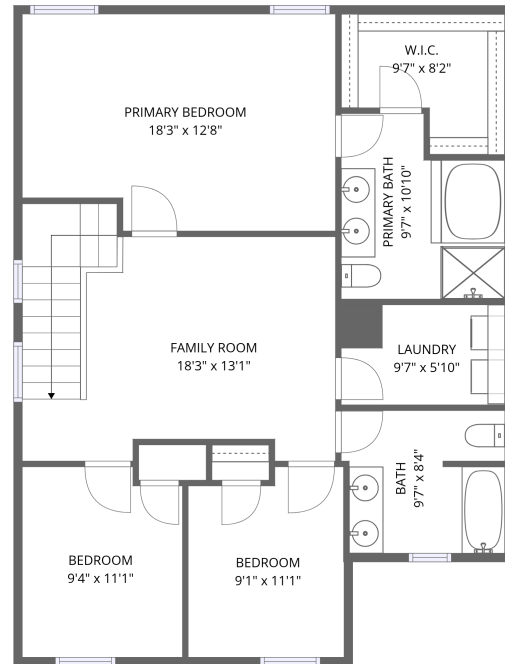
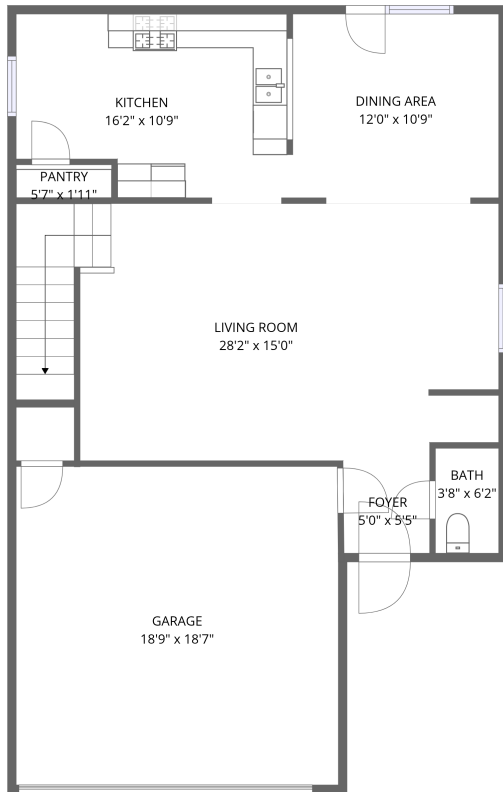


116 Dollie Mae Ln, Stephens City, VA, US

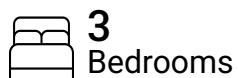


Total Area: 1789 sq. ft

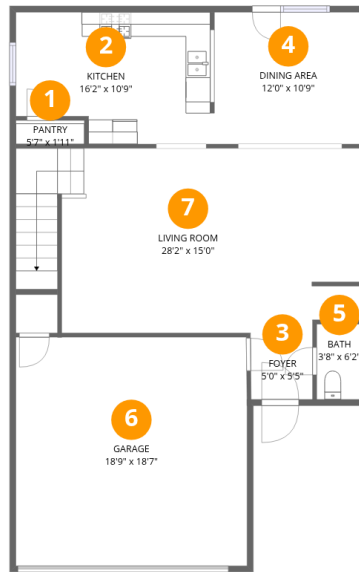
1st Floor: 790 sq. ft, 2nd Floor: 999 sq. ft

Excluded: Garage 349 sq. ft, Walls: 141 sq. ft

Property summary



116 Dollie Mae Ln, Stephens City, VA, US



Room dimensions

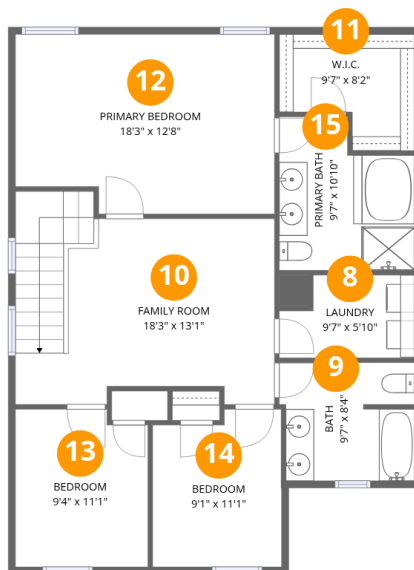
Floor 1

Total: 790 sqft

Excluded: 349 sqft

#		Dimensions	sqft	Counted as living area
1	Pantry	5'7" x 11'11"	11 sq. ft	Yes
2	Kitchen	16'2" x 10'9"	159 sq. ft	Yes
3	Foyer	5'0" x 5'5"	27 sq. ft	Yes
4	Dining Area	12'0" x 10'9"	129 sq. ft	Yes
5	Bath	3'8" x 6'2"	23 sq. ft	Yes
6	Garage	18'9" x 18'7"	349 sq. ft	No
7	Living Room	28'2" x 15'0"	401 sq. ft	Yes

116 Dollie Mae Ln, Stephens City, VA, US



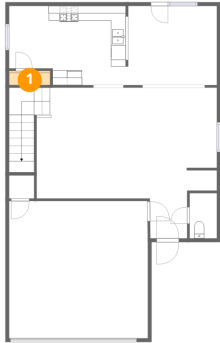
Room dimensions

Floor 2

Total:999sqft Excluded: 0sqft

#		Dimensions	sqft	Counted as living area
8	Laundry	9'7" x 5'10"	50 sq. ft	Yes
9	Bath	9'7" x 8'4"	76 sq. ft	Yes
10	Family Room	18'3" x 13'1"	239 sq. ft	Yes
11	W.I.C.	9'7" x 8'2"	64 sq. ft	Yes
12	Primary Bedroom	18'3" x 12'8"	220 sq. ft	Yes
13	Bedroom	9'4" x 11'1"	101 sq. ft	Yes
14	Bedroom	9'1" x 11'1"	95 sq. ft	Yes
15	Primary Bath	9'7" x 10'10"	90 sq. ft	Yes

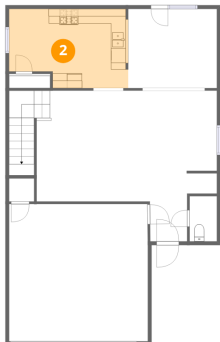
1 Floor 1 - Pantry



Dimensions: 5'7" x 1'11"
Area: 11 sq. ft
Counted as living area: Yes

Heated: Yes
Finished: Yes
Enclosed: Yes
Contiguous: Yes
Permitted: Yes
Wet space: No
Addition: No
Conversion: No

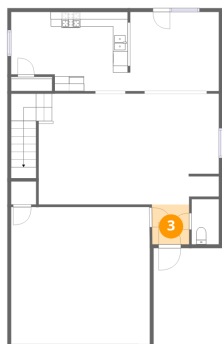
2 Floor 1 - Kitchen



Dimensions: 16'2" x 10'9"
Area: 159 sq. ft
Counted as living area: Yes

Heated: Yes
Finished: Yes
Enclosed: Yes
Contiguous: Yes
Permitted: Yes
Wet space: No
Addition: No
Conversion: No

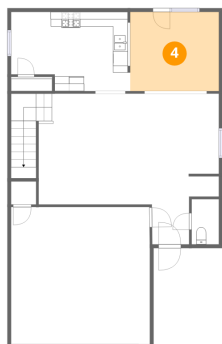
3 Floor 1 - Foyer



Dimensions: 5'0" x 5'5"
Area: 27 sq. ft
Counted as living area: Yes

Heated: Yes
Finished: Yes
Enclosed: Yes
Contiguous: Yes
Permitted: Yes
Wet space: No
Addition: No
Conversion: No

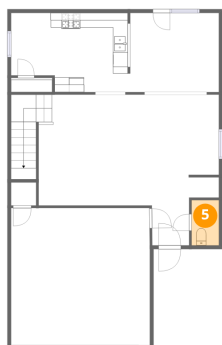
4 Floor 1 - Dining Area



Dimensions: 12'0" x 10'9"
Area: 129 sq. ft
Counted as living area: Yes

Heated: Yes
Finished: Yes
Enclosed: Yes
Contiguous: Yes
Permitted: Yes
Wet space: No
Addition: No
Conversion: No

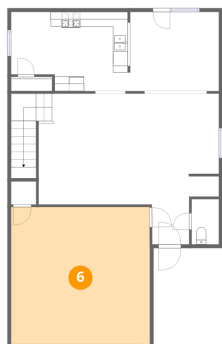
5 Floor 1 - Bath



Dimensions: 3'8" x 6'2"
Area: 23 sq. ft
Counted as living area: Yes

Heated: Yes
Finished: Yes
Enclosed: Yes
Contiguous: Yes
Permitted: Yes
Wet space: Yes
Addition: No
Conversion: No

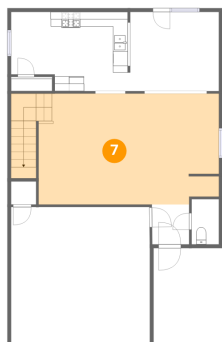
6 Floor 1 - Garage



Dimensions: 18'9" x 18'7"
Area: 349 sq. ft
Counted as living area: No

Heated: No
Finished: No
Enclosed: Yes
Contiguous: Yes
Permitted: Yes
Wet space: No
Addition: No
Conversion: No

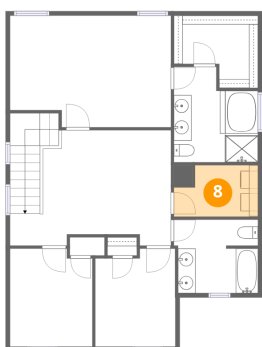
7 Floor 1 - Living Room



Dimensions: 28'2" x 15'0"
Area: 401 sq. ft
Counted as living area: Yes

Heated: Yes
Finished: Yes
Enclosed: Yes
Contiguous: Yes
Permitted: Yes
Wet space: No
Addition: No
Conversion: No

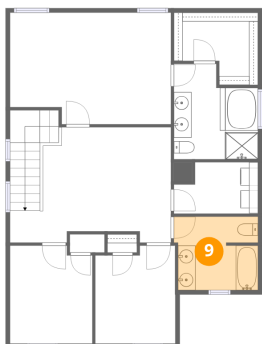
8 Floor 2 - Laundry



Dimensions: 9'7" x 5'10"
Area: 50 sq. ft
Counted as living area: Yes

Heated: Yes
Finished: Yes
Enclosed: Yes
Contiguous: Yes
Permitted: Yes
Wet space: No
Addition: No
Conversion: No

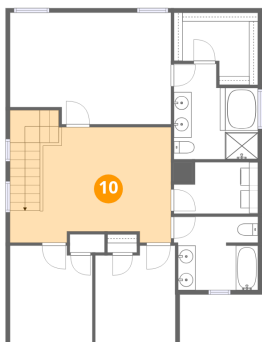
9 Floor 2 - Bath



Dimensions: 9'7" x 8'4"
Area: 76 sq. ft
Counted as living area: Yes

Heated: Yes
Finished: Yes
Enclosed: Yes
Contiguous: Yes
Permitted: Yes
Wet space: Yes
Addition: No
Conversion: No

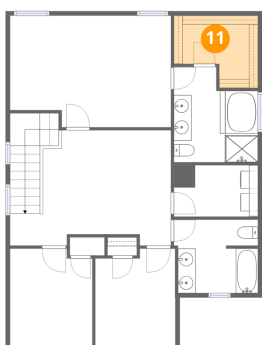
10 Floor 2 - Family Room



Dimensions: 18'3" x 13'1"
Area: 239 sq. ft
Counted as living area: Yes

Heated: Yes
Finished: Yes
Enclosed: Yes
Contiguous: Yes
Permitted: Yes
Wet space: No
Addition: No
Conversion: No

11 Floor 2 - W.I.C.



Dimensions: 9'7" x 8'2"
Area: 64 sq. ft
Counted as living area: Yes

Heated: Yes
Finished: Yes
Enclosed: Yes
Contiguous: Yes
Permitted: Yes
Wet space: No
Addition: No
Conversion: No

12 Floor 2 - Primary Bedroom



Dimensions: 18'3" x 12'8"
Area: 220 sq. ft
Counted as living area: Yes

Heated: Yes
Finished: Yes
Enclosed: Yes
Contiguous: Yes
Permitted: Yes
Wet space: No
Addition: No
Conversion: No

13 Floor 2 - Bedroom



Dimensions: 9'4" x 11'1"
Area: 101 sq. ft
Counted as living area: Yes

Heated: Yes
Finished: Yes
Enclosed: Yes
Contiguous: Yes
Permitted: Yes
Wet space: No
Addition: No
Conversion: No

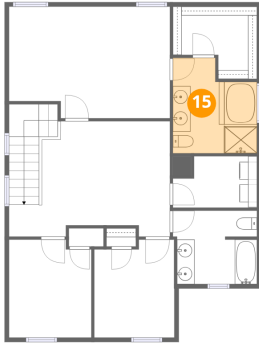
14 Floor 2 - Bedroom



Dimensions: 9'1" x 11'1"
Area: 95 sq. ft
Counted as living area: Yes

Heated: Yes
Finished: Yes
Enclosed: Yes
Contiguous: Yes
Permitted: Yes
Wet space: No
Addition: No
Conversion: No

15 Floor 2 - Primary Bath



Dimensions: 9'7" x 10'10"
Area: 90 sq. ft
Counted as living area: Yes

Heated: Yes
Finished: Yes
Enclosed: Yes
Contiguous: Yes
Permitted: Yes
Wet space: Yes
Addition: No
Conversion: No