

Home data report

3328 Long Branch Dr, Drive, New Castle, PA, US, Drive



Total Area: 3885 sq. ft

Basement: 1249 sq. ft, 1st Floor: 1283 sq. ft, 2nd Floor: 1353 sq. ft

Excluded: Utility 36 sq. ft, Garage 588 sq. ft, Porch 130 sq. ft, Deck 453 sq. ft, Patio 353 sq. ft, Open to below 83 sq. ft, Walls: 275 sq. ft

Property summary

 **3** Floors

 **4** Bedrooms

 **3** Bathrooms

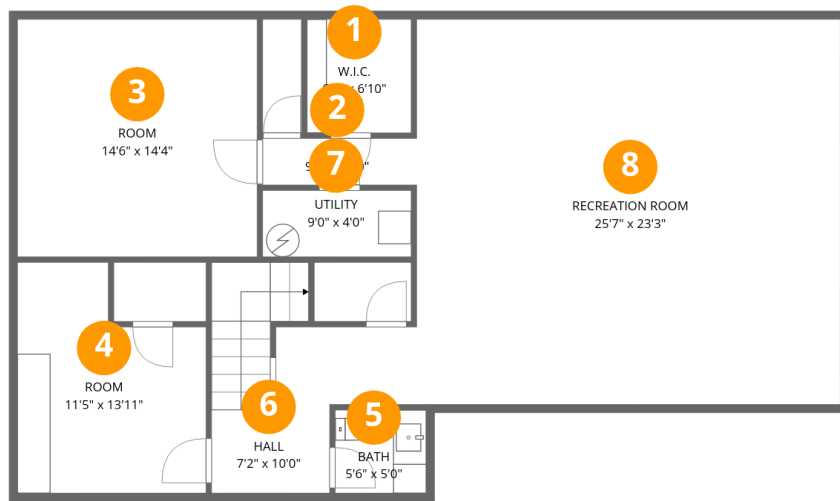
Home data report

3328 Long Branch Dr, Drive, New Castle, PA, US, Drive

 **1**
Half baths

 **1**
Garages

3328 Long Branch Dr, Drive, New Castle, PA, US, Drive



Room dimensions

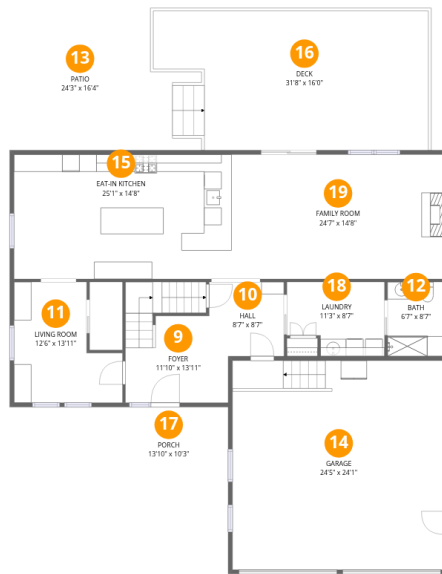
Floor 1 Below grade

Total: 1249 sqft Excluded: 36 sqft

#		Dimensions	sqft	Counted as living area
1	W.I.C.	6'3" x 6'10"	43 sq. ft	Yes
2	Hall	9'4" x 2'10"	26 sq. ft	Yes
3	Room	14'6" x 14'4"	207 sq. ft	Yes
4	Room	11'5" x 13'11"	135 sq. ft	Yes
5	Bath	5'6" x 5'0"	28 sq. ft	Yes
6	Hall	7'2" x 10'0"	117 sq. ft	Yes
7	Utility	9'0" x 4'0"	36 sq. ft	No
8	Recreation Room	25'7" x 23'3"	594 sq. ft	Yes

Home data report

3328 Long Branch Dr, Drive, New Castle, PA, US, Drive



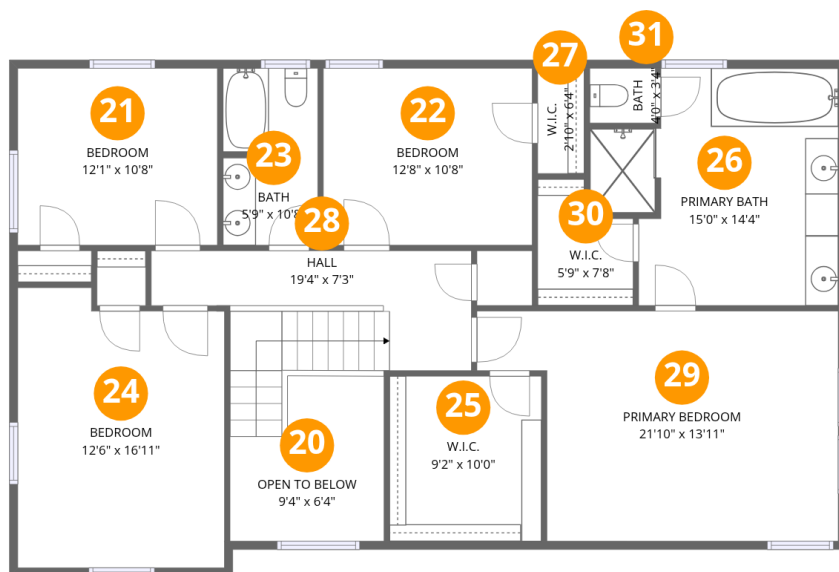
Room dimensions

Floor 2

Total: 1283 sqft

Excluded: 1524 sqft

#		Dimensions	sqft	Counted as living area
9	Foyer	11'10" x 13'11"	147 sq. ft	Yes
10	Hall	8'7" x 8'7"	69 sq. ft	Yes
11	Living Room	12'6" x 13'11"	140 sq. ft	Yes
12	Bath	6'7" x 8'7"	56 sq. ft	Yes
13	Patio	24'3" x 16'4"	353 sq. ft	No
14	Garage	24'5" x 24'1"	588 sq. ft	No
15	Eat-in Kitchen	25'1" x 14'8"	360 sq. ft	Yes
16	Deck	31'8" x 16'0"	453 sq. ft	No
17	Porch	13'10" x 10'3"	130 sq. ft	No
18	Laundry	11'3" x 8'7"	87 sq. ft	Yes
19	Family Room	24'7" x 14'8"	353 sq. ft	Yes



Room dimensions

Floor 3

Total: 1353sqft Excluded: 83sqft

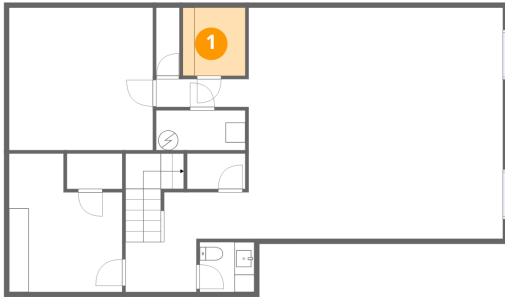
#		Dimensions	sqft	Counted as living area
20	Open To Below	9'4" x 6'4"	84 sq. ft	No
21	Bedroom	12'1" x 10'8"	129 sq. ft	Yes
22	Bedroom	12'8" x 10'8"	135 sq. ft	Yes
23	Bath	5'9" x 10'8"	60 sq. ft	Yes
24	Bedroom	12'6" x 16'11"	200 sq. ft	Yes
25	W.I.C.	9'2" x 10'0"	91 sq. ft	Yes
26	Primary Bath	15'0" x 14'4"	182 sq. ft	Yes
27	W.I.C.	2'10" x 6'4"	18 sq. ft	Yes
28	Hall	19'4" x 7'3"	134 sq. ft	Yes
29	Primary Bedroom	21'10" x 13'11"	260 sq. ft	Yes
30	W.I.C.	5'9" x 7'8"	37 sq. ft	Yes

Home data report

3328 Long Branch Dr, Drive, New Castle, PA, US, Drive

#		Dimensions	sqft	Counted as living area
31	Bath	4'0" x 3'4"	13 sq. ft	Yes

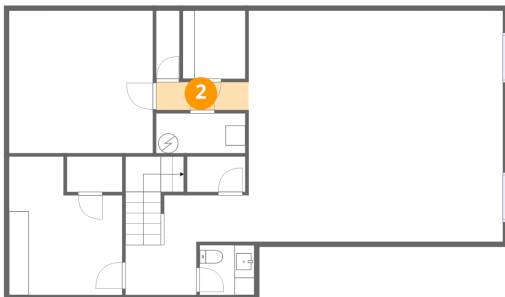
1 Floor 1 - W.I.C.



Dimensions: 6'3" x 6'10"
Area: 43 sq. ft
Counted as living area: Yes

Heated: Yes
Finished: Yes
Enclosed: Yes
Contiguous: Yes
Permitted: Yes
Wet space: No
Addition: No
Conversion: No

2 Floor 1 - Hall



Dimensions: 9'4" x 2'10"
Area: 26 sq. ft
Counted as living area: Yes

Heated: Yes
Finished: Yes
Enclosed: Yes
Contiguous: Yes
Permitted: Yes
Wet space: No
Addition: No
Conversion: No

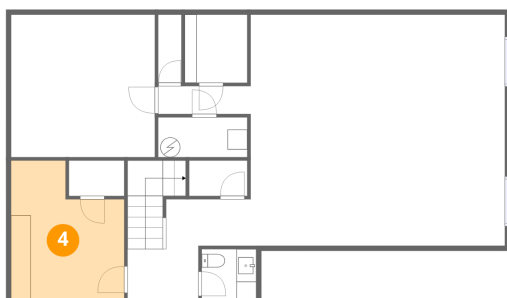
3 Floor 1 - Room



Dimensions: 14'6" x 14'4"
Area: 207 sq. ft
Counted as living area: Yes

Heated: Yes
Finished: Yes
Enclosed: Yes
Contiguous: Yes
Permitted: Yes
Wet space: No
Addition: No
Conversion: No

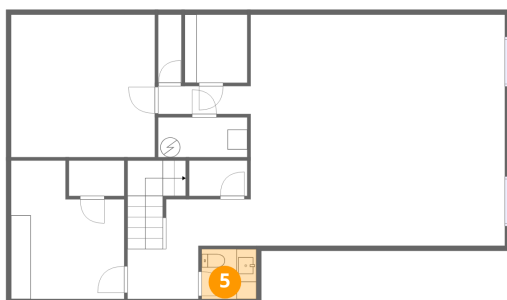
4 Floor 1 - Room



Dimensions: 11'5" x 13'11"
Area: 135 sq. ft
Counted as living area: Yes

Heated: Yes
Finished: Yes
Enclosed: Yes
Contiguous: Yes
Permitted: Yes
Wet space: No
Addition: No
Conversion: No

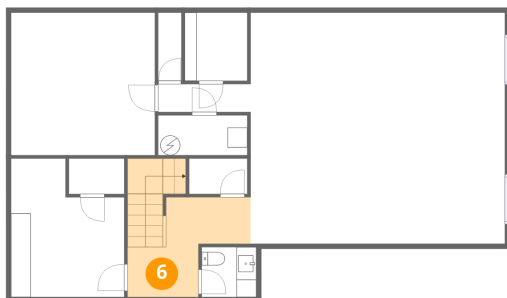
5 Floor 1 - Bath



Dimensions: 5'6" x 5'0"
Area: 28 sq. ft
Counted as living area: Yes

Heated: Yes
Finished: Yes
Enclosed: Yes
Contiguous: Yes
Permitted: Yes
Wet space: Yes
Addition: No
Conversion: No

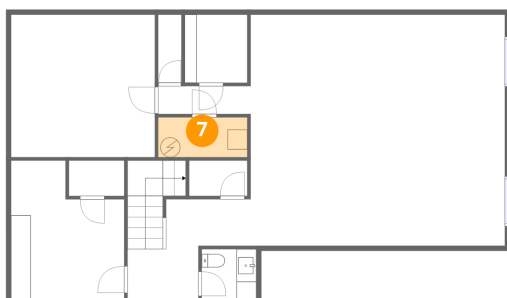
6 Floor 1 - Hall



Dimensions: 7'2" x 10'0"
Area: 117 sq. ft
Counted as living area: Yes

Heated: Yes
Finished: Yes
Enclosed: Yes
Contiguous: Yes
Permitted: Yes
Wet space: No
Addition: No
Conversion: No

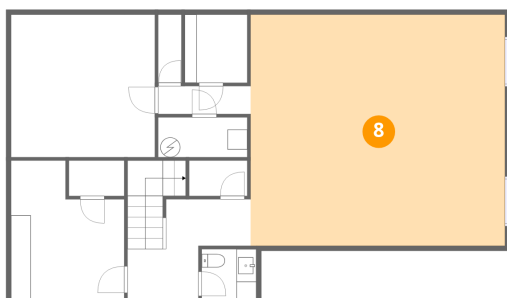
7 Floor 1 - Utility



Dimensions: 9'0" x 4'0"
Area: 36 sq. ft
Counted as living area: No

Heated: Yes
Finished: No
Enclosed: Yes
Contiguous: Yes
Permitted: Yes
Wet space: No
Addition: No
Conversion: No

8 Floor 1 - Recreation Room



Dimensions: 25'7" x 23'3"
Area: 594 sq. ft
Counted as living area: Yes

Heated: Yes
Finished: Yes
Enclosed: Yes
Contiguous: Yes
Permitted: Yes
Wet space: No
Addition: No
Conversion: No

9 Floor 2 - Foyer



Dimensions: 11'10" x 13'11"
Area: 147 sq. ft
Counted as living area: Yes

Heated: Yes
Finished: Yes
Enclosed: Yes
Contiguous: Yes
Permitted: Yes
Wet space: No
Addition: No
Conversion: No

10 Floor 2 - Hall



Dimensions: 8'7" x 8'7"
Area: 69 sq. ft
Counted as living area: Yes

Heated: Yes
Finished: Yes
Enclosed: Yes
Contiguous: Yes
Permitted: Yes
Wet space: No
Addition: No
Conversion: No

11 Floor 2 - Living Room



Dimensions: 12'6" x 13'11"
Area: 140 sq. ft
Counted as living area: Yes

Heated: Yes
Finished: Yes
Enclosed: Yes
Contiguous: Yes
Permitted: Yes
Wet space: No
Addition: No
Conversion: No

12 Floor 2 - Bath



Dimensions: 6'7" x 8'7"
Area: 56 sq. ft
Counted as living area: Yes

Heated: Yes
Finished: Yes
Enclosed: Yes
Contiguous: Yes
Permitted: Yes
Wet space: Yes
Addition: No
Conversion: No

13 Floor 2 - Patio



Dimensions: 24'3" x 16'4"
Area: 353 sq. ft
Counted as living area: No

Heated: No
Finished: No
Enclosed: No
Contiguous: Yes
Permitted: Yes
Wet space: No
Addition: No
Conversion: No

14 Floor 2 - Garage



Dimensions: 24'5" x 24'1"
Area: 588 sq. ft
Counted as living area: No

Heated: No
Finished: No
Enclosed: Yes
Contiguous: Yes
Permitted: Yes
Wet space: No
Addition: No
Conversion: No

15 Floor 2 - Eat-in Kitchen



Dimensions: 25'1" x 14'8"
Area: 360 sq. ft
Counted as living area: Yes

Heated: Yes
Finished: Yes
Enclosed: Yes
Contiguous: Yes
Permitted: Yes
Wet space: No
Addition: No
Conversion: No

16 Floor 2 - Deck



Dimensions: 31'8" x 16'0"
Area: 453 sq. ft
Counted as living area: No

Heated: No
Finished: No
Enclosed: No
Contiguous: Yes
Permitted: Yes
Wet space: No
Addition: No
Conversion: No

17 Floor 2 - Porch



Dimensions: 13'10" x 10'3"
Area: 130 sq. ft
Counted as living area: No

Heated: No
Finished: No
Enclosed: No
Contiguous: Yes
Permitted: Yes
Wet space: No
Addition: No
Conversion: No

18 Floor 2 - Laundry



Dimensions: 11'3" x 8'7"
Area: 87 sq. ft
Counted as living area: Yes

Heated: Yes
Finished: Yes
Enclosed: Yes
Contiguous: Yes
Permitted: Yes
Wet space: No
Addition: No
Conversion: No

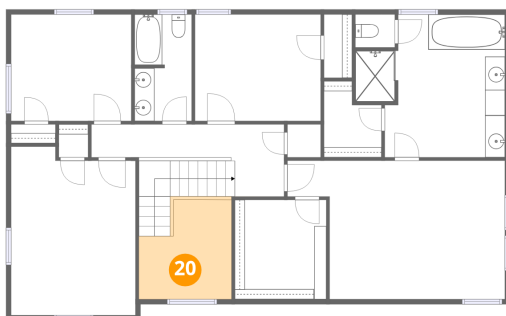
19 Floor 2 - Family Room



Dimensions: 24'7" x 14'8"
Area: 353 sq. ft
Counted as living area: Yes

Heated: Yes
Finished: Yes
Enclosed: Yes
Contiguous: Yes
Permitted: Yes
Wet space: No
Addition: No
Conversion: No

20 Floor 3 - Open To Below



Dimensions: 9'4" x 6'4"
Area: 84 sq. ft
Counted as living area: No

Heated: No
Finished: No
Enclosed: No
Contiguous: Yes
Permitted: No
Wet space: No
Addition: No
Conversion: No

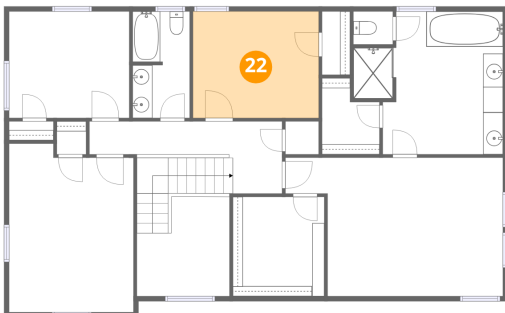
21 Floor 3 - Bedroom



Dimensions: 12'1" x 10'8"
Area: 129 sq. ft
Counted as living area: Yes

Heated: Yes
Finished: Yes
Enclosed: Yes
Contiguous: Yes
Permitted: Yes
Wet space: No
Addition: No
Conversion: No

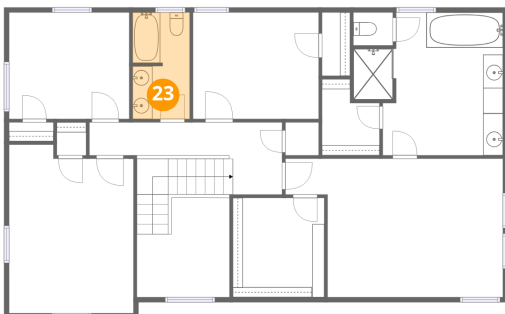
22 Floor 3 - Bedroom



Dimensions: 12'8" x 10'8"
Area: 135 sq. ft
Counted as living area: Yes

Heated: Yes
Finished: Yes
Enclosed: Yes
Contiguous: Yes
Permitted: Yes
Wet space: No
Addition: No
Conversion: No

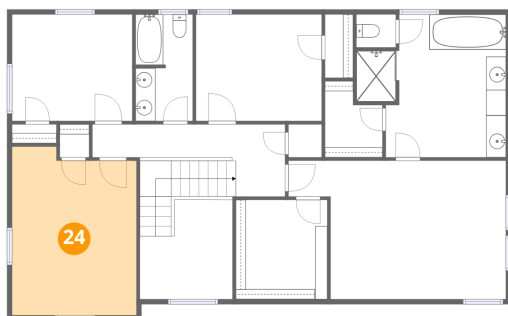
23 Floor 3 - Bath



Dimensions: 5'9" x 10'8"
Area: 60 sq. ft
Counted as living area: Yes

Heated: Yes
Finished: Yes
Enclosed: Yes
Contiguous: Yes
Permitted: Yes
Wet space: Yes
Addition: No
Conversion: No

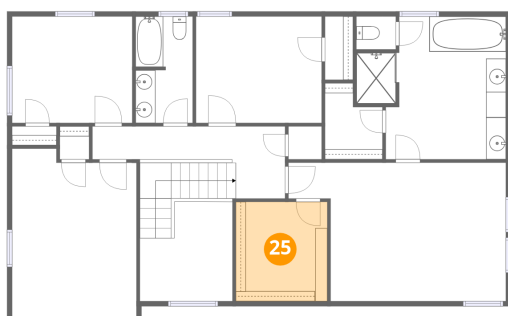
24 Floor 3 - Bedroom



Dimensions: 12'6" x 16'11"
Area: 200 sq. ft
Counted as living area: Yes

Heated: Yes
Finished: Yes
Enclosed: Yes
Contiguous: Yes
Permitted: Yes
Wet space: No
Addition: No
Conversion: No

25 Floor 3 - W.I.C.



Dimensions: 9'2" x 10'0"
Area: 91 sq. ft
Counted as living area: Yes

Heated: Yes
Finished: Yes
Enclosed: Yes
Contiguous: Yes
Permitted: Yes
Wet space: No
Addition: No
Conversion: No

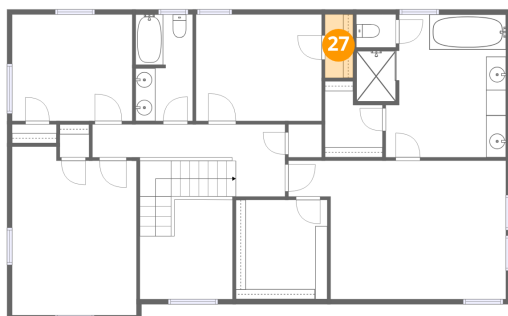
26 Floor 3 - Primary Bath



Dimensions: 15'0" x 14'4"
Area: 182 sq. ft
Counted as living area: Yes

Heated: Yes
Finished: Yes
Enclosed: Yes
Contiguous: Yes
Permitted: Yes
Wet space: Yes
Addition: No
Conversion: No

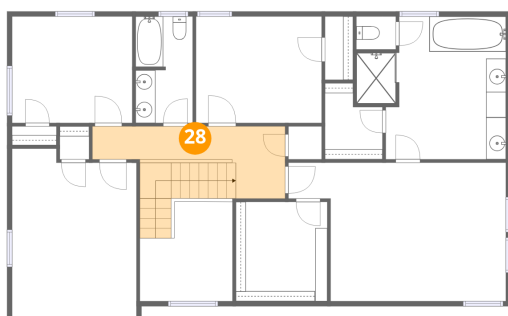
27 Floor 3 - W.I.C.



Dimensions: 2'10" x 6'4"
Area: 18 sq. ft
Counted as living area: Yes

Heated: Yes
Finished: Yes
Enclosed: Yes
Contiguous: Yes
Permitted: Yes
Wet space: No
Addition: No
Conversion: No

28 Floor 3 - Hall



Dimensions: 19'4" x 7'3"
Area: 134 sq. ft
Counted as living area: Yes

Heated: Yes
Finished: Yes
Enclosed: Yes
Contiguous: Yes
Permitted: Yes
Wet space: No
Addition: No
Conversion: No

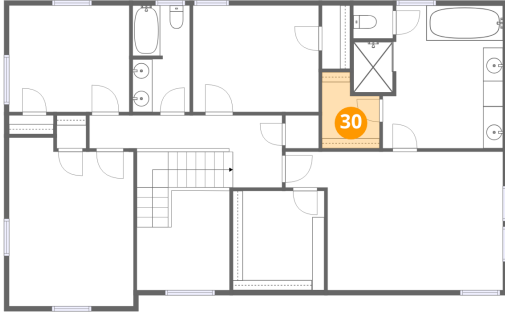
29 Floor 3 - Primary Bedroom



Dimensions: 21'10" x 13'11"
Area: 260 sq. ft
Counted as living area: Yes

Heated: Yes
Finished: Yes
Enclosed: Yes
Contiguous: Yes
Permitted: Yes
Wet space: No
Addition: No
Conversion: No

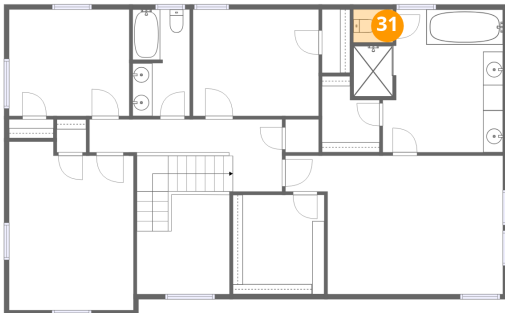
30 Floor 3 - W.I.C.



Dimensions: 5'9" x 7'8"
Area: 37 sq. ft
Counted as living area: Yes

Heated: Yes
Finished: Yes
Enclosed: Yes
Contiguous: Yes
Permitted: Yes
Wet space: No
Addition: No
Conversion: No

31 Floor 3 - Bath



Dimensions: 4'0" x 3'4"
Area: 13 sq. ft
Counted as living area: Yes

Heated: Yes
Finished: Yes
Enclosed: Yes
Contiguous: Yes
Permitted: Yes
Wet space: Yes
Addition: No
Conversion: No