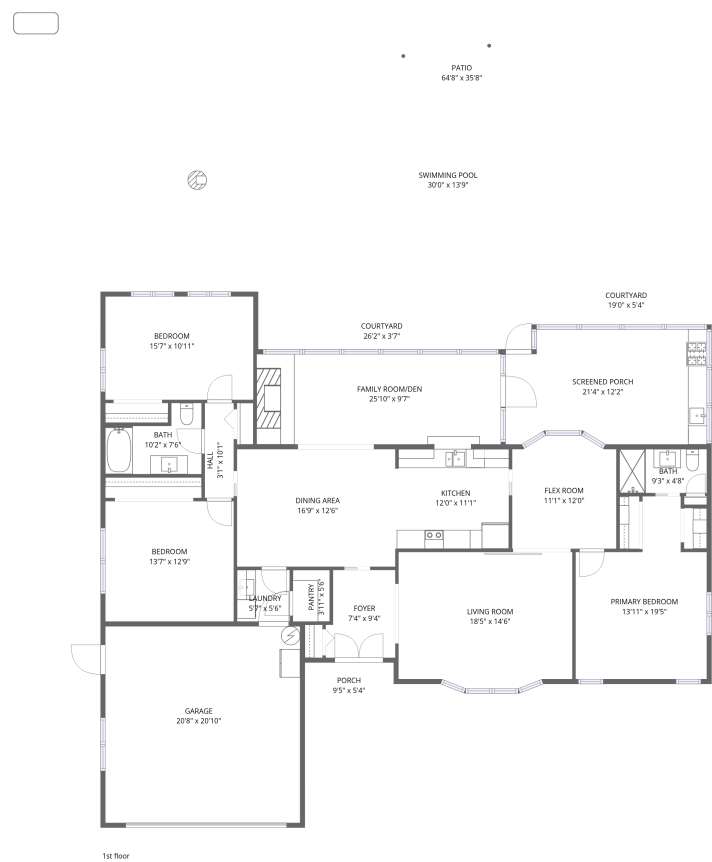


Home data report

1090 McFarland Street, Hammock Park, Dunedin, Pinellas
County, Florida, United States, 34698



Total Area: 1936 sq. ft

1st Floor: 1936 sq. ft

Excluded: Garage 430 sq. ft, Screened porch 242 sq. ft, Porch 50 sq. ft, Courtyard 184 sq. ft, Patio 1419 sq. ft, Walls: 153 sq. ft

Property summary

 **1** Floors

 **3** Bedrooms

 **2** Bathrooms

 **1** Garages

Home data report

1090 McFarland Street, Hammock Park, Dunedin, Pinellas
County, Florida, United States, 34698



Room dimensions

Floor 1 Total:1936sqft Excluded: 2325sqft

#		Dimensions	sqft	Counted as living area
1	Hall	3'1" x 10'1"	31 sq. ft	Yes
2	Pantry	3'11" x 5'6"	21 sq. ft	Yes
3	Swimming Pool	30'0" x 13'9"	418 sq. ft	No
4	Garage	20'8" x 20'10"	430 sq. ft	No
5	Porch	9'5" x 5'4"	50 sq. ft	No
6	Kitchen	12'0" x 11'1"	128 sq. ft	Yes
7	Screened Porch	21'4" x 12'2"	242 sq. ft	No
8	Bath	9'3" x 4'8"	43 sq. ft	Yes
9	Flex Room	11'1" x 12'0"	126 sq. ft	Yes
10	Bedroom	15'7" x 10'11"	172 sq. ft	Yes
11	Bedroom	13'7" x 12'9"	174 sq. ft	Yes

Home data report

**1090 McFarland Street, Hammock Park, Dunedin, Pinellas
County, Florida, United States, 34698**

#		Dimensions	sqft	Counted as living area
12	Family ROOM/DEN	25'10" x 9'7"	248 sq. ft	Yes
13	Patio	64'8" x 35'8"	1836 sq. ft	No
14	Living Room	18'5" x 14'6"	256 sq. ft	Yes
15	Dining Area	16'9" x 12'6"	209 sq. ft	Yes
16	Primary Bedroom	13'11" x 19'5"	211 sq. ft	Yes
17	Laundry	5'7" x 5'6"	31 sq. ft	Yes
18	Bath	10'2" x 7'6"	60 sq. ft	Yes
19	Courtyard	19'0" x 5'4"	91 sq. ft	No
20	Foyer	7'4" x 9'4"	64 sq. ft	Yes
21	Courtyard	26'2" x 3'7"	93 sq. ft	No

1 Floor 1 - Hall



Dimensions: 3'1" x 10'1"
Area: 31 sq. ft
Counted as living area: Yes

Heated: Yes
Finished: Yes
Enclosed: Yes
Contiguous: Yes
Permitted: Yes
Wet space: No
Addition: No
Conversion: No

2 Floor 1 - Pantry



Dimensions: 3'11" x 5'6"
Area: 21 sq. ft
Counted as living area: Yes

Heated: Yes
Finished: Yes
Enclosed: Yes
Contiguous: Yes
Permitted: Yes
Wet space: No
Addition: No
Conversion: No

3 Floor 1 - Swimming Pool



Dimensions: 30'0" x 13'9"
Area: 418 sq. ft
Counted as living area: No

Heated: No
Finished: No
Enclosed: No
Contiguous: Yes
Permitted: No
Wet space: No
Addition: No
Conversion: No

4 Floor 1 - Garage



Dimensions: 20'8" x 20'10"
Area: 430 sq. ft
Counted as living area: No

Heated: No
Finished: No
Enclosed: Yes
Contiguous: Yes
Permitted: Yes
Wet space: No
Addition: No
Conversion: No

5 Floor 1 - Porch



Dimensions: 9'5" x 5'4"
Area: 50 sq. ft
Counted as living area: No

Heated: No
Finished: No
Enclosed: No
Contiguous: Yes
Permitted: Yes
Wet space: No
Addition: No
Conversion: No

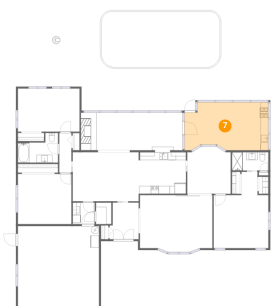
6 Floor 1 - Kitchen



Dimensions: 12'0" x 11'1"
Area: 128 sq. ft
Counted as living area: Yes

Heated: Yes
Finished: Yes
Enclosed: Yes
Contiguous: Yes
Permitted: Yes
Wet space: No
Addition: No
Conversion: No

7 Floor 1 - Screened Porch



Dimensions: 21'4" x 12'2"
Area: 242 sq. ft
Counted as living area: No

Heated: No
Finished: No
Enclosed: No
Contiguous: Yes
Permitted: Yes
Wet space: No
Addition: No
Conversion: No

8 Floor 1 - Bath



Dimensions: 9'3" x 4'8"
Area: 43 sq. ft
Counted as living area: Yes

Heated: Yes
Finished: Yes
Enclosed: Yes
Contiguous: Yes
Permitted: Yes
Wet space: Yes
Addition: No
Conversion: No

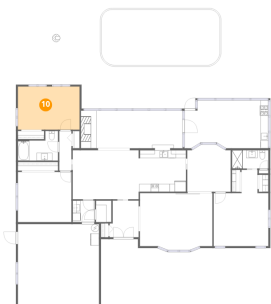
9 Floor 1 - Flex Room



Dimensions: 11'1" x 12'0"
Area: 126 sq. ft
Counted as living area: Yes

Heated: Yes
Finished: Yes
Enclosed: Yes
Contiguous: Yes
Permitted: Yes
Wet space: No
Addition: No
Conversion: No

10 Floor 1 - Bedroom



Dimensions: 15'7" x 10'11"
Area: 172 sq. ft
Counted as living area: Yes

Heated: Yes
Finished: Yes
Enclosed: Yes
Contiguous: Yes
Permitted: Yes
Wet space: No
Addition: No
Conversion: No

11 Floor 1 - Bedroom



Dimensions: 13'7" x 12'9"
Area: 174 sq. ft
Counted as living area: Yes

Heated: Yes
Finished: Yes
Enclosed: Yes
Contiguous: Yes
Permitted: Yes
Wet space: No
Addition: No
Conversion: No

12 Floor 1 - Family ROOM/DEN



Dimensions: 25'10" x 9'7"
Area: 248 sq. ft
Counted as living area: Yes

Heated: Yes
Finished: Yes
Enclosed: Yes
Contiguous: Yes
Permitted: Yes
Wet space: No
Addition: No
Conversion: No

13 Floor 1 - Patio



Dimensions: 64'8" x 35'8"
Area: 1836 sq. ft
Counted as living area: No

Heated: No
Finished: No
Enclosed: No
Contiguous: Yes
Permitted: Yes
Wet space: No
Addition: No
Conversion: No

14 Floor 1 - Living Room



Dimensions: 18'5" x 14'6"
Area: 256 sq. ft
Counted as living area: Yes

Heated: Yes
Finished: Yes
Enclosed: Yes
Contiguous: Yes
Permitted: Yes
Wet space: No
Addition: No
Conversion: No

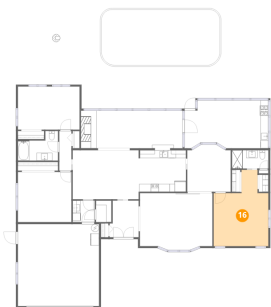
15 Floor 1 - Dining Area



Dimensions: 16'9" x 12'6"
Area: 209 sq. ft
Counted as living area: Yes

Heated: Yes
Finished: Yes
Enclosed: Yes
Contiguous: Yes
Permitted: Yes
Wet space: No
Addition: No
Conversion: No

16 Floor 1 - Primary Bedroom



Dimensions: 13'11" x 19'5"
Area: 211 sq. ft
Counted as living area: Yes

Heated: Yes
Finished: Yes
Enclosed: Yes
Contiguous: Yes
Permitted: Yes
Wet space: No
Addition: No
Conversion: No

17 Floor 1 - Laundry



Dimensions: 5'7" x 5'6"
Area: 31 sq. ft
Counted as living area: Yes

Heated: Yes
Finished: Yes
Enclosed: Yes
Contiguous: Yes
Permitted: Yes
Wet space: No
Addition: No
Conversion: No

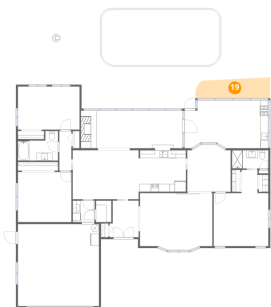
18 Floor 1 - Bath



Dimensions: 10'2" x 7'6"
Area: 60 sq. ft
Counted as living area: Yes

Heated: Yes
Finished: Yes
Enclosed: Yes
Contiguous: Yes
Permitted: Yes
Wet space: Yes
Addition: No
Conversion: No

19 Floor 1 - Courtyard



Dimensions: 19'0" x 5'4"
Area: 91 sq. ft
Counted as living area: No

Heated: No
Finished: No
Enclosed: No
Contiguous: Yes
Permitted: No
Wet space: No
Addition: No
Conversion: No

20 Floor 1 - Foyer

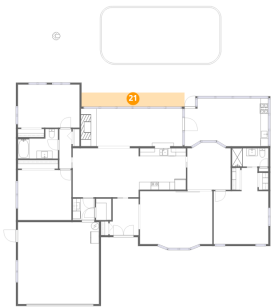


Dimensions: 7'4" x 9'4"
Area: 64 sq. ft
Counted as living area: Yes

Heated: Yes
Finished: Yes
Enclosed: Yes
Contiguous: Yes
Permitted: Yes
Wet space: No
Addition: No
Conversion: No

1090 McFarland Street, Hammock Park, Dunedin, Pinellas
County, Florida, United States, 34698

21 Floor 1 - Courtyard



Dimensions: 26'2" x 3'7"
Area: 93 sq. ft
Counted as living area: No

Heated: No
Finished: No
Enclosed: No
Contiguous: Yes
Permitted: No
Wet space: No
Addition: No
Conversion: No