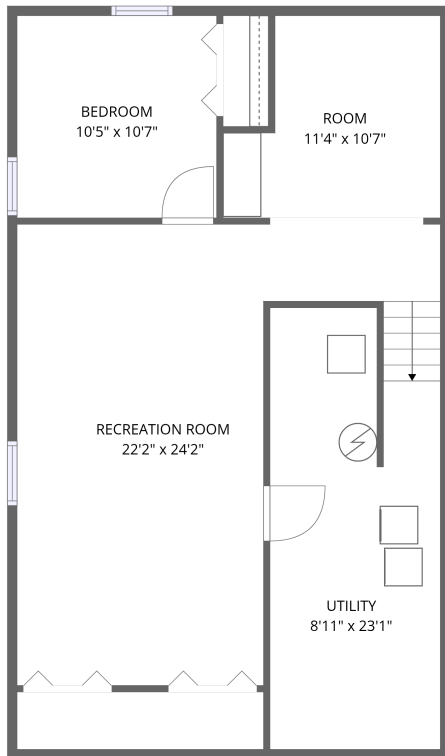
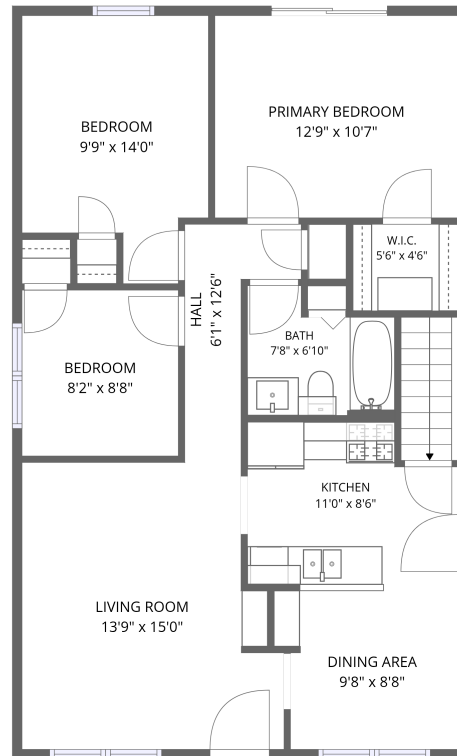


Home data report

881 Manchester Course, Geneva, Kane County, Illinois, United States, 60134



Basement



1st floor

Total Area: 1533 sq. ft

Basement: 657 sq. ft, 1st Floor: 876 sq. ft

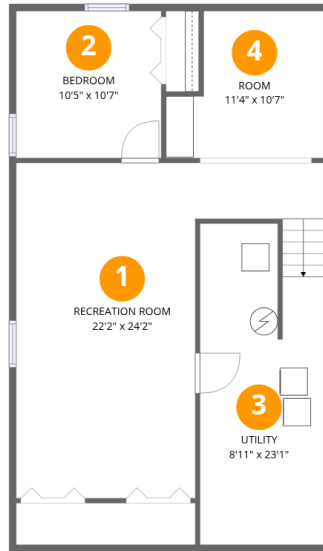
Excluded: Utility 193 sq. ft, Walls: 126 sq. ft

Property summary



Home data report

881 Manchester Course, Geneva, Kane County, Illinois, United States, 60134



Room dimensions

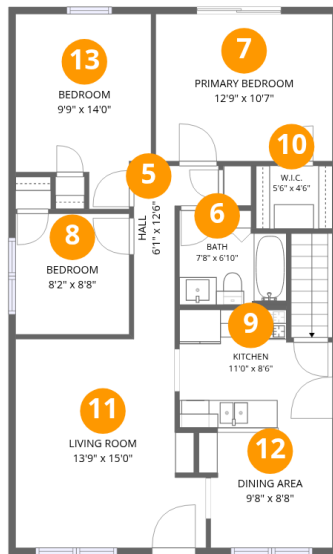
Floor 1 Below grade

Total:657sqft

Excluded: 193sqft

#		Dimensions	sqft	Counted as living area
1	Recreation Room	22'2" x 24'2"	361 sq. ft	Yes
2	Bedroom	10'5" x 10'7"	111 sq. ft	Yes
3	Utility	8'11" x 23'1"	192 sq. ft	No
4	Room	11'4" x 10'7"	104 sq. ft	Yes

881 Manchester Course, Geneva, Kane County, Illinois, United States, 60134



Room dimensions

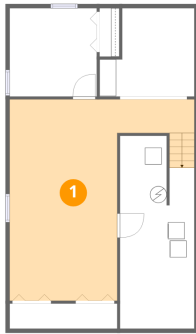
Floor 2

Total:876sqft Excluded: 0sqft

#		Dimensions	sqft	Counted as living area
5	Hall	6'1" x 12'6"	46 sq. ft	Yes
6	Bath	7'8" x 6'10"	44 sq. ft	Yes
7	Primary Bedroom	12'9" x 10'7"	135 sq. ft	Yes
8	Bedroom	8'2" x 8'8"	71 sq. ft	Yes
9	Kitchen	11'0" x 8'6"	86 sq. ft	Yes
10	W.I.C.	5'6" x 4'6"	25 sq. ft	Yes
11	Living Room	13'9" x 15'0"	188 sq. ft	Yes
12	Dining Area	9'8" x 8'8"	78 sq. ft	Yes
13	Bedroom	9'9" x 14'0"	117 sq. ft	Yes

881 Manchester Course, Geneva, Kane County, Illinois, United States, 60134

1 Floor 1 - Recreation Room



Dimensions: 22'2" x 24'2"
Area: 361 sq. ft
Counted as living area: Yes

Heated: Yes
Finished: Yes
Enclosed: Yes
Contiguous: Yes
Permitted: Yes
Wet space: No
Addition: No
Conversion: No

2 Floor 1 - Bedroom

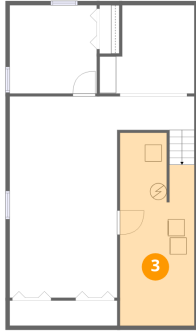


Dimensions: 10'5" x 10'7"
Area: 111 sq. ft
Counted as living area: Yes

Heated: Yes
Finished: Yes
Enclosed: Yes
Contiguous: Yes
Permitted: Yes
Wet space: No
Addition: No
Conversion: No

881 Manchester Course, Geneva, Kane County, Illinois, United States, 60134

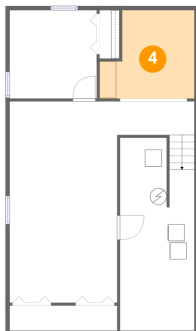
3 Floor 1 - Utility



Dimensions: 8'11" x 23'1"
Area: 192 sq. ft
Counted as living area: No

Heated: Yes
Finished: No
Enclosed: Yes
Contiguous: Yes
Permitted: Yes
Wet space: No
Addition: No
Conversion: No

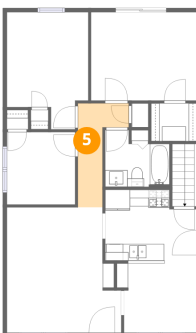
4 Floor 1 - Room



Dimensions: 11'4" x 10'7"
Area: 104 sq. ft
Counted as living area: Yes

Heated: Yes
Finished: Yes
Enclosed: Yes
Contiguous: Yes
Permitted: Yes
Wet space: No
Addition: No
Conversion: No

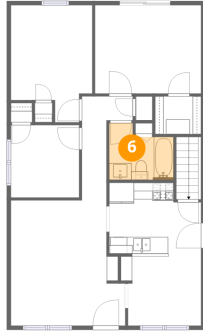
5 Floor 2 - Hall



Dimensions: 6'1" x 12'6"
Area: 46 sq. ft
Counted as living area: Yes

Heated: Yes
Finished: Yes
Enclosed: Yes
Contiguous: Yes
Permitted: Yes
Wet space: No
Addition: No
Conversion: No

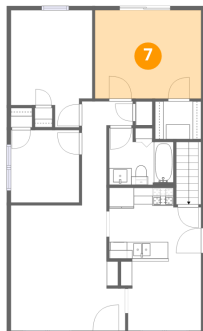
6 Floor 2 - Bath



Dimensions: 7'8" x 6'10"
Area: 44 sq. ft
Counted as living area: Yes

Heated: Yes
Finished: Yes
Enclosed: Yes
Contiguous: Yes
Permitted: Yes
Wet space: Yes
Addition: No
Conversion: No

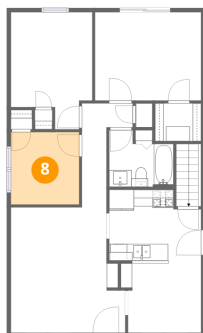
7 Floor 2 - Primary Bedroom



Dimensions: 12'9" x 10'7"
Area: 135 sq. ft
Counted as living area: Yes

Heated: Yes
Finished: Yes
Enclosed: Yes
Contiguous: Yes
Permitted: Yes
Wet space: No
Addition: No
Conversion: No

8 Floor 2 - Bedroom

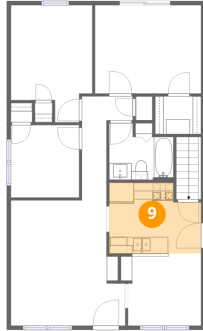


Dimensions: 8'2" x 8'8"
Area: 71 sq. ft
Counted as living area: Yes

Heated: Yes
Finished: Yes
Enclosed: Yes
Contiguous: Yes
Permitted: Yes
Wet space: No
Addition: No
Conversion: No

881 Manchester Course, Geneva, Kane County, Illinois, United States, 60134

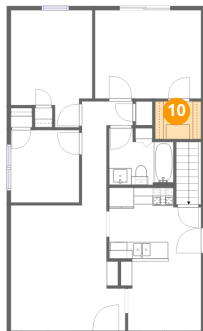
9 Floor 2 - Kitchen



Dimensions: 11'0" x 8'6"
Area: 86 sq. ft
Counted as living area: Yes

Heated: Yes
Finished: Yes
Enclosed: Yes
Contiguous: Yes
Permitted: Yes
Wet space: No
Addition: No
Conversion: No

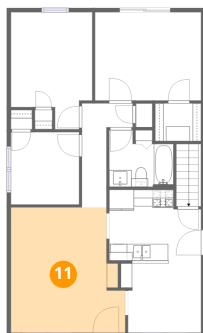
10 Floor 2 - W.I.C.



Dimensions: 5'6" x 4'6"
Area: 25 sq. ft
Counted as living area: Yes

Heated: Yes
Finished: Yes
Enclosed: Yes
Contiguous: Yes
Permitted: Yes
Wet space: No
Addition: No
Conversion: No

11 Floor 2 - Living Room

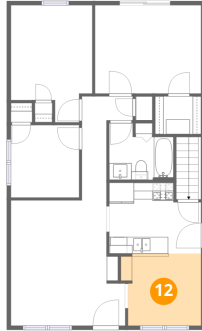


Dimensions: 13'9" x 15'0"
Area: 188 sq. ft
Counted as living area: Yes

Heated: Yes
Finished: Yes
Enclosed: Yes
Contiguous: Yes
Permitted: Yes
Wet space: No
Addition: No
Conversion: No

881 Manchester Course, Geneva, Kane County, Illinois, United States, 60134

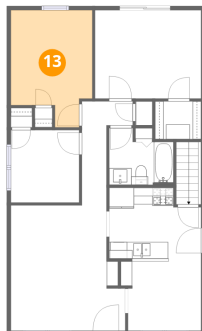
12 Floor 2 - Dining Area



Dimensions: 9'8" x 8'8"
Area: 78 sq. ft
Counted as living area: Yes

Heated: Yes
Finished: Yes
Enclosed: Yes
Contiguous: Yes
Permitted: Yes
Wet space: No
Addition: No
Conversion: No

13 Floor 2 - Bedroom



Dimensions: 9'9" x 14'0"
Area: 117 sq. ft
Counted as living area: Yes

Heated: Yes
Finished: Yes
Enclosed: Yes
Contiguous: Yes
Permitted: Yes
Wet space: No
Addition: No
Conversion: No