

Home data report

3634 Larson Lane, Roanoke, Virginia 24018, United States



**Total Area: 1621 sq. ft**

Basement 1: 0 sq. ft, 1st Floor: 1621 sq. ft

Excluded: Undefined 98 sq. ft, Room 218 sq. ft, Basement 725 sq. ft, Utility 350 sq. ft, Screened porch 105 sq. ft, Patio 285 sq. ft, Carport 199 sq. ft, Fireplace 10 sq. ft, Walls: 193 sq. ft

Property summary

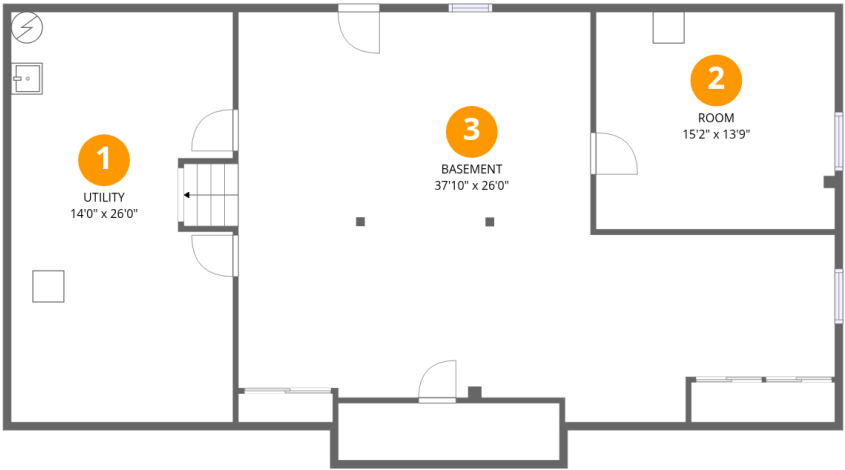
**2** Floors

**3** Bedrooms

**3** Bathrooms

Home data report

3634 Larson Lane, Roanoke, Virginia 24018, United States



Room dimensions

Floor 1 Below grade

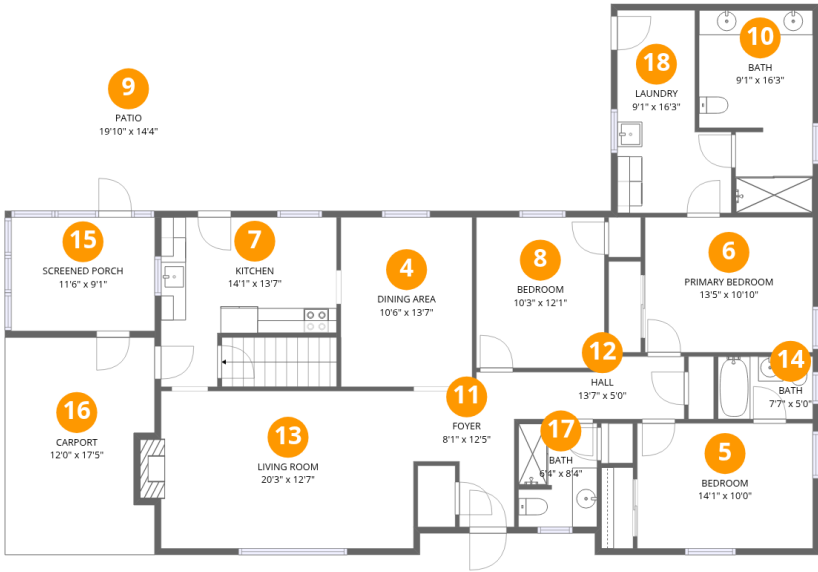
Total:0sqft

Excluded: 1391sqft

#		Dimensions	sqft	Counted as living area
1	Utility	14'0" x 26'0"	365 sq. ft	No
2	Room	15'2" x 13'9"	208 sq. ft	No
3	Basement	37'10" x 26'0"	983 sq. ft	No

Home data report

3634 Larson Lane, Roanoke, Virginia 24018, United States



Room dimensions

Floor 2

Total:1621sqft   Excluded: 599sqft

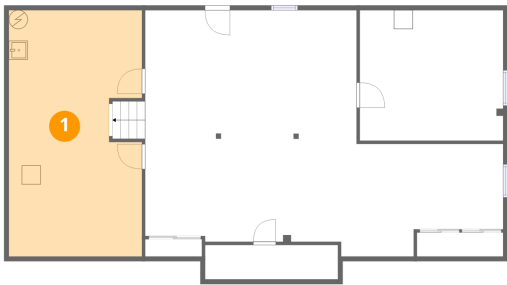
#		Dimensions	sqft	Counted as living area
4	Dining Area	10'6" x 13'7"	143 sq. ft	Yes
5	Bedroom	14'1" x 10'0"	141 sq. ft	Yes
6	Primary Bedroom	13'5" x 10'10"	145 sq. ft	Yes
7	Kitchen	14'1" x 13'7"	191 sq. ft	Yes
8	Bedroom	10'3" x 12'1"	124 sq. ft	Yes
9	Patio	19'10" x 14'4"	284 sq. ft	No
10	Bath	9'1" x 16'3"	148 sq. ft	Yes
11	Foyer	8'1" x 12'5"	100 sq. ft	Yes
12	Hall	13'7" x 5'0"	68 sq. ft	Yes
13	Living Room	20'3" x 12'7"	255 sq. ft	Yes
14	Bath	7'7" x 5'0"	38 sq. ft	Yes

## Home data report

**3634 Larson Lane, Roanoke, Virginia 24018, United States**

#		Dimensions	sqft	Counted as living area
15	Screened Porch	11'6" x 9'1"	105 sq. ft	No
16	Carport	12'0" x 17'5"	209 sq. ft	No
17	Bath	6'4" x 8'4"	52 sq. ft	Yes
18	Laundry	9'1" x 16'3"	148 sq. ft	Yes

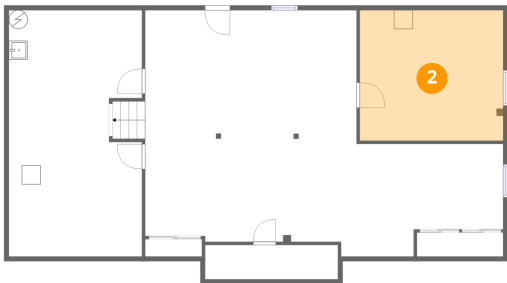
1 Floor 1 - Utility



Dimensions: 14'0" x 26'0"  
Area: 365 sq. ft  
Counted as living area: No

Heated: Yes  
Finished: No  
Enclosed: Yes  
Contiguous: Yes  
Permitted: Yes  
Wet space: No  
Addition: No  
Conversion: No

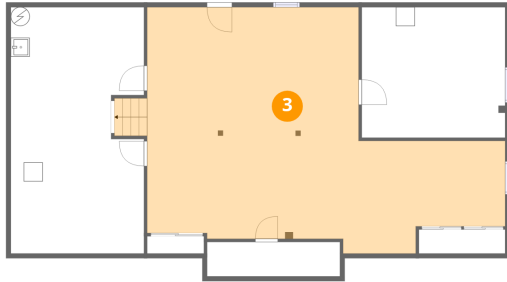
2 Floor 1 - Room



Dimensions: 15'2" x 13'9"  
Area: 208 sq. ft  
Counted as living area: No

Heated: Yes  
Finished: No  
Enclosed: Yes  
Contiguous: Yes  
Permitted: Yes  
Wet space: No  
Addition: No  
Conversion: No

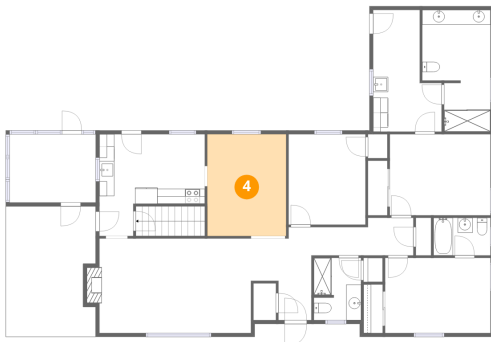
### 3 Floor 1 - Basement



Dimensions: 37'10" x 26'0"  
Area: 983 sq. ft  
Counted as living area: No

Heated: Yes  
Finished: No  
Enclosed: Yes  
Contiguous: Yes  
Permitted: Yes  
Wet space: No  
Addition: No  
Conversion: No

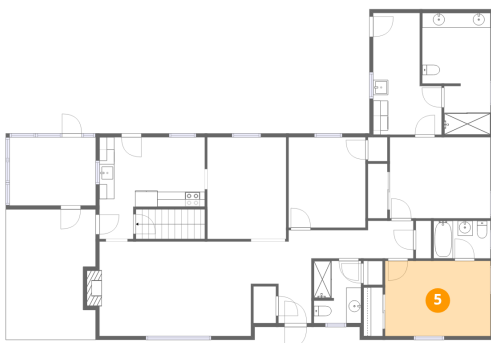
### 4 Floor 2 - Dining Area



Dimensions: 10'6" x 13'7"  
Area: 143 sq. ft  
Counted as living area: Yes

Heated: Yes  
Finished: Yes  
Enclosed: Yes  
Contiguous: Yes  
Permitted: Yes  
Wet space: No  
Addition: No  
Conversion: No

### 5 Floor 2 - Bedroom



Dimensions: 14'1" x 10'0"  
Area: 141 sq. ft  
Counted as living area: Yes

Heated: Yes  
Finished: Yes  
Enclosed: Yes  
Contiguous: Yes  
Permitted: Yes  
Wet space: No  
Addition: No  
Conversion: No

## 6 Floor 2 - Primary Bedroom



Dimensions: 13'5" x 10'10"  
Area: 145 sq. ft  
Counted as living area: Yes

Heated: Yes  
Finished: Yes  
Enclosed: Yes  
Contiguous: Yes  
Permitted: Yes  
Wet space: No  
Addition: No  
Conversion: No

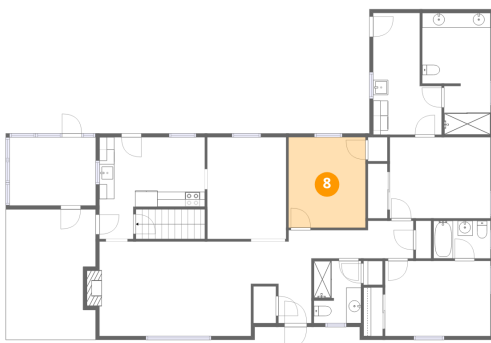
## 7 Floor 2 - Kitchen



Dimensions: 14'1" x 13'7"  
Area: 191 sq. ft  
Counted as living area: Yes

Heated: Yes  
Finished: Yes  
Enclosed: Yes  
Contiguous: Yes  
Permitted: Yes  
Wet space: No  
Addition: No  
Conversion: No

## 8 Floor 2 - Bedroom



Dimensions: 10'3" x 12'1"  
Area: 124 sq. ft  
Counted as living area: Yes

Heated: Yes  
Finished: Yes  
Enclosed: Yes  
Contiguous: Yes  
Permitted: Yes  
Wet space: No  
Addition: No  
Conversion: No

## 9 Floor 2 - Patio



Dimensions: 19'10" x 14'4"  
Area: 284 sq. ft  
Counted as living area: No

Heated: No  
Finished: No  
Enclosed: No  
Contiguous: Yes  
Permitted: Yes  
Wet space: No  
Addition: No  
Conversion: No

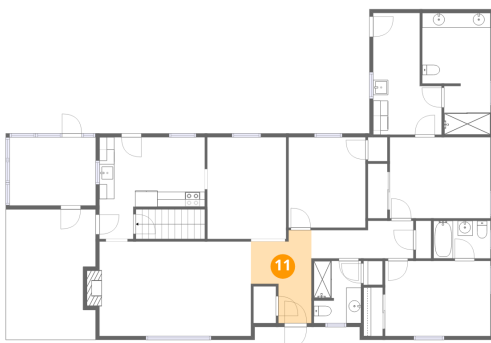
## 10 Floor 2 - Bath



Dimensions: 9'1" x 16'3"  
Area: 148 sq. ft  
Counted as living area: Yes

Heated: Yes  
Finished: Yes  
Enclosed: Yes  
Contiguous: Yes  
Permitted: Yes  
Wet space: Yes  
Addition: No  
Conversion: No

## 11 Floor 2 - Foyer



Dimensions: 8'1" x 12'5"  
Area: 100 sq. ft  
Counted as living area: Yes

Heated: Yes  
Finished: Yes  
Enclosed: Yes  
Contiguous: Yes  
Permitted: Yes  
Wet space: No  
Addition: No  
Conversion: No



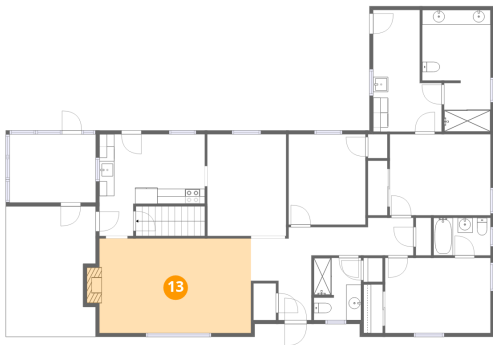
12 Floor 2 - Hall



Dimensions: 13'7" x 5'0"  
Area: 68 sq. ft  
Counted as living area: Yes

Heated: Yes  
Finished: Yes  
Enclosed: Yes  
Contiguous: Yes  
Permitted: Yes  
Wet space: No  
Addition: No  
Conversion: No

13 Floor 2 - Living Room



Dimensions: 20'3" x 12'7"  
Area: 255 sq. ft  
Counted as living area: Yes

Heated: Yes  
Finished: Yes  
Enclosed: Yes  
Contiguous: Yes  
Permitted: Yes  
Wet space: No  
Addition: No  
Conversion: No

14 Floor 2 - Bath



Dimensions: 7'7" x 5'0"  
Area: 38 sq. ft  
Counted as living area: Yes

Heated: Yes  
Finished: Yes  
Enclosed: Yes  
Contiguous: Yes  
Permitted: Yes  
Wet space: Yes  
Addition: No  
Conversion: No

## 15 Floor 2 - Screened Porch



Dimensions: 11'6" x 9'1"  
Area: 105 sq. ft  
Counted as living area: No

Heated: No  
Finished: No  
Enclosed: No  
Contiguous: Yes  
Permitted: Yes  
Wet space: No  
Addition: No  
Conversion: No

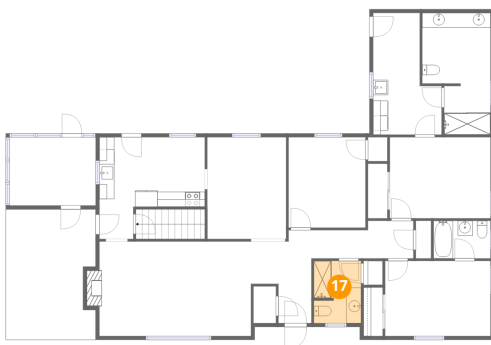
## 16 Floor 2 - Carport



Dimensions: 12'0" x 17'5"  
Area: 209 sq. ft  
Counted as living area: No

Heated: No  
Finished: Yes  
Enclosed: No  
Contiguous: Yes  
Permitted: Yes  
Wet space: No  
Addition: No  
Conversion: No

## 17 Floor 2 - Bath



Dimensions: 6'4" x 8'4"  
Area: 52 sq. ft  
Counted as living area: Yes

Heated: Yes  
Finished: Yes  
Enclosed: Yes  
Contiguous: Yes  
Permitted: Yes  
Wet space: Yes  
Addition: No  
Conversion: No

18 Floor 2 - Laundry



Dimensions: 9'1" x 16'3"  
Area: 148 sq. ft  
Counted as living area: Yes

Heated: Yes  
Finished: Yes  
Enclosed: Yes  
Contiguous: Yes  
Permitted: Yes  
Wet space: No  
Addition: No  
Conversion: No