

Home data report

50 Old Sawmill Rd, Woodstock, CT, US




Total Area: 2235 sq. ft

Basement: 630 sq. ft, 1st Floor: 941 sq. ft, 2nd Floor: 664 sq. ft

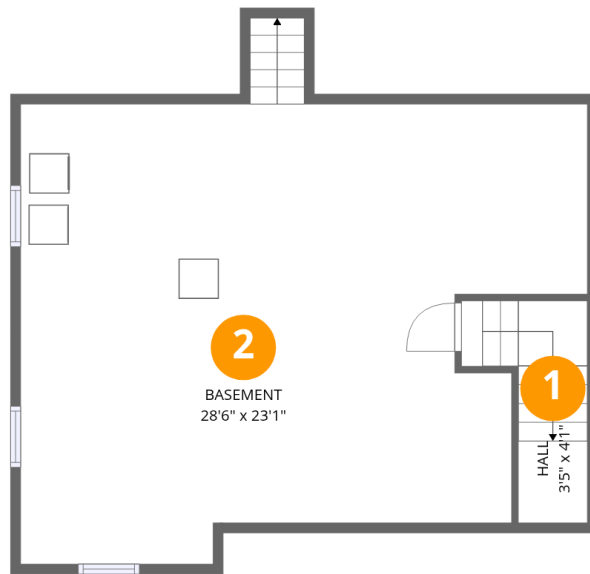
Excluded: Porch 81 sq. ft, Deck 17 sq. ft, Balcony 27 sq. ft, Walls: 179 sq. ft

Property summary

 **3** Floors

 **3** Bedrooms

 **2** Bathrooms



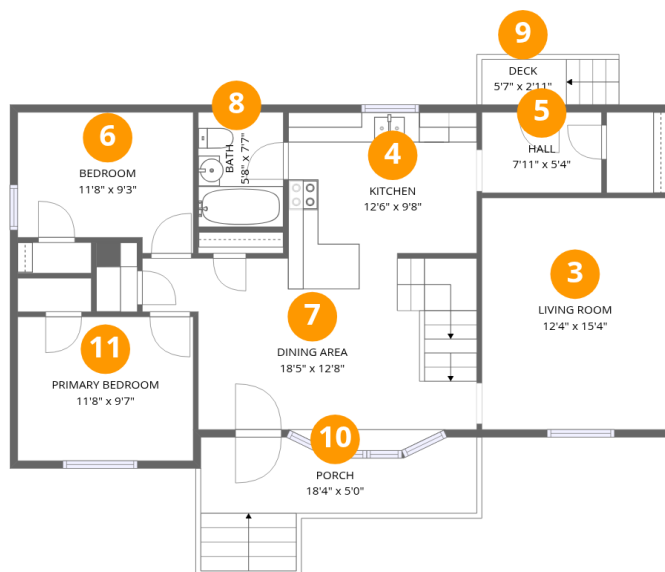
Room dimensions

Floor 1 Below grade

Total:630sqft

Excluded: 0sqft

#		Dimensions	sqft	Counted as living area
1	Hall	3'5" x 4'1"	14 sq. ft	Yes
2	Basement	28'6" x 23'1"	656 sq. ft	Yes

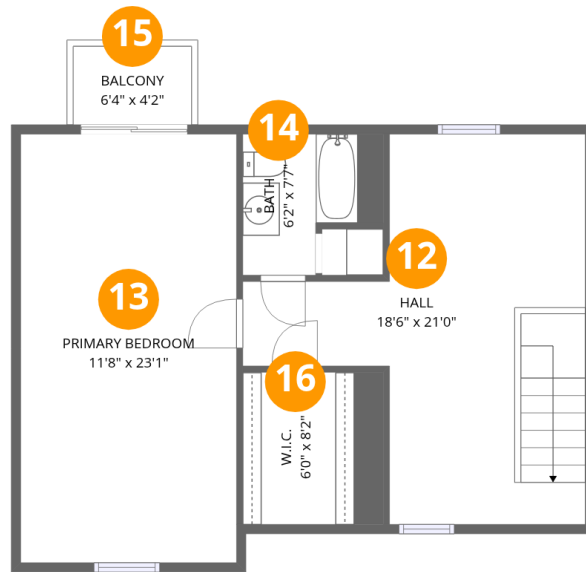


Room dimensions

Floor 2

Total: 941 sqft Excluded: 98 sqft

#		Dimensions	sqft	Counted as living area
3	Living Room	12'4" x 15'4"	189 sq. ft	Yes
4	Kitchen	12'6" x 9'8"	120 sq. ft	Yes
5	Hall	7'11" x 5'4"	42 sq. ft	Yes
6	Bedroom	11'8" x 9'3"	108 sq. ft	Yes
7	Dining Area	18'5" x 12'8"	234 sq. ft	Yes
8	Bath	5'8" x 7'7"	43 sq. ft	Yes
9	Deck	5'7" x 2'11"	16 sq. ft	No
10	Porch	18'4" x 5'0"	92 sq. ft	No
11	Primary Bedroom	11'8" x 9'7"	111 sq. ft	Yes



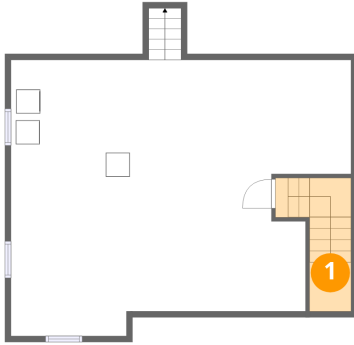
Room dimensions

Floor 3

Total: 664 sqft Excluded: 27 sqft

#		Dimensions	sqft	Counted as living area
12	Hall	18'6" x 21'0"	388 sq. ft	Yes
13	Primary Bedroom	11'8" x 23'1"	268 sq. ft	Yes
14	Bath	6'2" x 7'7"	47 sq. ft	Yes
15	Balcony	6'4" x 4'2"	27 sq. ft	No
16	W.I.C.	6'0" x 8'2"	49 sq. ft	Yes

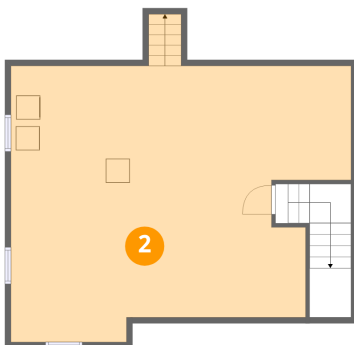
1 Floor 1 - Hall



Dimensions: 3'5" x 4'1"
Area: 14 sq. ft
Counted as living area: Yes

Heated: Yes
Finished: Yes
Enclosed: Yes
Contiguous: Yes
Permitted: Yes
Wet space: No
Addition: No
Conversion: No

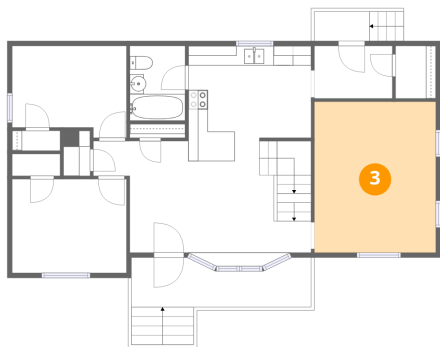
2 Floor 1 - Basement



Dimensions: 28'6" x 23'1"
Area: 656 sq. ft
Counted as living area: Yes

Heated: Yes
Finished: Yes
Enclosed: Yes
Contiguous: Yes
Permitted: Yes
Wet space: No
Addition: No
Conversion: No

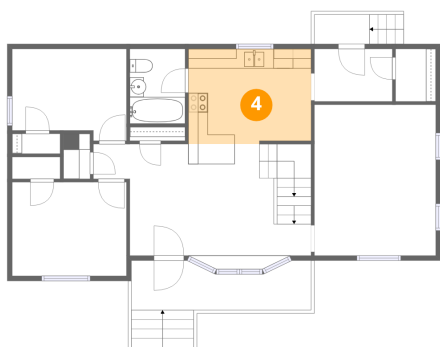
3 Floor 2 - Living Room



Dimensions: 12'4" x 15'4"
Area: 189 sq. ft
Counted as living area: Yes

Heated: Yes
Finished: Yes
Enclosed: Yes
Contiguous: Yes
Permitted: Yes
Wet space: No
Addition: No
Conversion: No

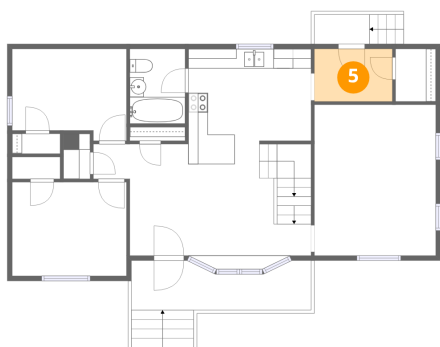
4 Floor 2 - Kitchen



Dimensions: 12'6" x 9'8"
Area: 120 sq. ft
Counted as living area: Yes

Heated: Yes
Finished: Yes
Enclosed: Yes
Contiguous: Yes
Permitted: Yes
Wet space: No
Addition: No
Conversion: No

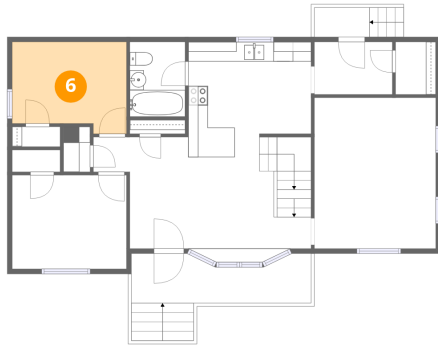
5 Floor 2 - Hall



Dimensions: 7'11" x 5'4"
Area: 42 sq. ft
Counted as living area: Yes

Heated: Yes
Finished: Yes
Enclosed: Yes
Contiguous: Yes
Permitted: Yes
Wet space: No
Addition: No
Conversion: No

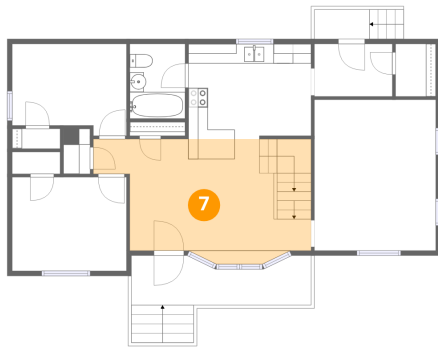
6 Floor 2 - Bedroom



Dimensions: 11'8" x 9'3"
Area: 108 sq. ft
Counted as living area: Yes

Heated: Yes
Finished: Yes
Enclosed: Yes
Contiguous: Yes
Permitted: Yes
Wet space: No
Addition: No
Conversion: No

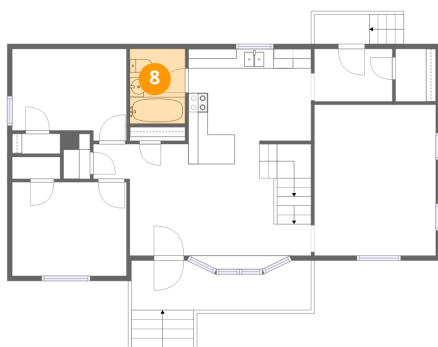
7 Floor 2 - Dining Area



Dimensions: 18'5" x 12'8"
Area: 234 sq. ft
Counted as living area: Yes

Heated: Yes
Finished: Yes
Enclosed: Yes
Contiguous: Yes
Permitted: Yes
Wet space: No
Addition: No
Conversion: No

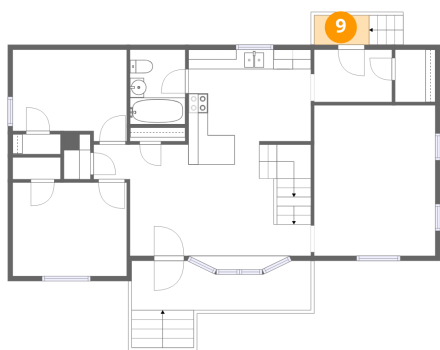
8 Floor 2 - Bath



Dimensions: 5'8" x 7'7"
Area: 43 sq. ft
Counted as living area: Yes

Heated: Yes
Finished: Yes
Enclosed: Yes
Contiguous: Yes
Permitted: Yes
Wet space: Yes
Addition: No
Conversion: No

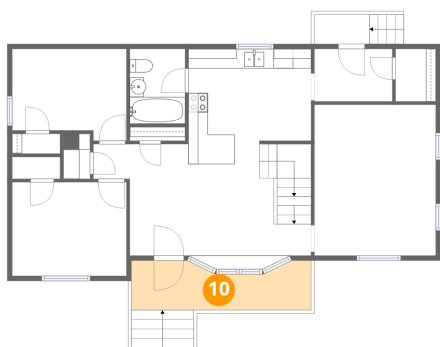
9 Floor 2 - Deck



Dimensions: 5'7" x 2'11"
Area: 16 sq. ft
Counted as living area: No

Heated: No
Finished: No
Enclosed: No
Contiguous: Yes
Permitted: Yes
Wet space: No
Addition: No
Conversion: No

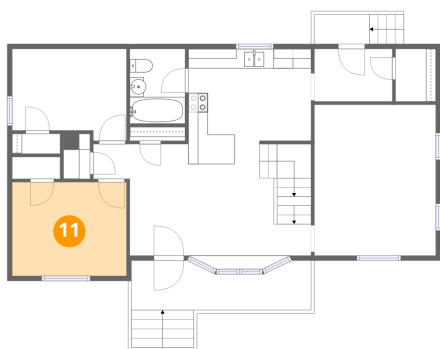
10 Floor 2 - Porch



Dimensions: 18'4" x 5'0"
Area: 92 sq. ft
Counted as living area: No

Heated: No
Finished: No
Enclosed: No
Contiguous: Yes
Permitted: Yes
Wet space: No
Addition: No
Conversion: No

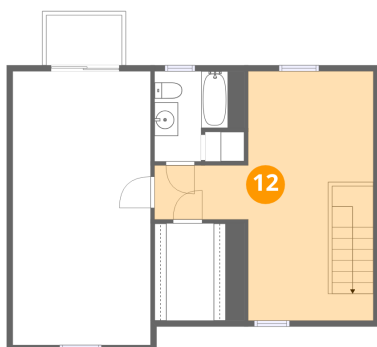
11 Floor 2 - Primary Bedroom



Dimensions: 11'8" x 9'7"
Area: 111 sq. ft
Counted as living area: Yes

Heated: Yes
Finished: Yes
Enclosed: Yes
Contiguous: Yes
Permitted: Yes
Wet space: No
Addition: No
Conversion: No

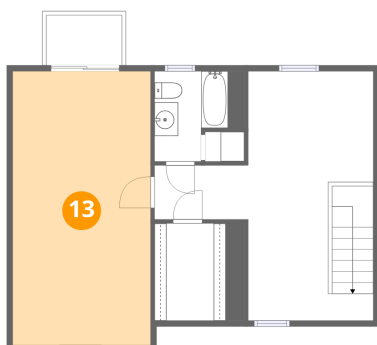
12 Floor 3 - Hall



Dimensions: 18'6" x 21'0"
Area: 388 sq. ft
Counted as living area: Yes

Heated: Yes
Finished: Yes
Enclosed: Yes
Contiguous: Yes
Permitted: Yes
Wet space: No
Addition: No
Conversion: No

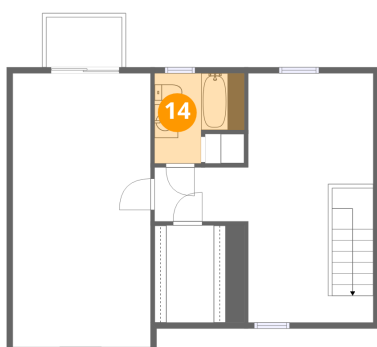
13 Floor 3 - Primary Bedroom



Dimensions: 11'8" x 23'1"
Area: 268 sq. ft
Counted as living area: Yes

Heated: Yes
Finished: Yes
Enclosed: Yes
Contiguous: Yes
Permitted: Yes
Wet space: No
Addition: No
Conversion: No

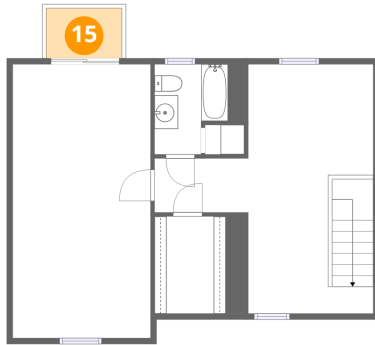
14 Floor 3 - Bath



Dimensions: 6'2" x 7'7"
Area: 47 sq. ft
Counted as living area: Yes

Heated: Yes
Finished: Yes
Enclosed: Yes
Contiguous: Yes
Permitted: Yes
Wet space: Yes
Addition: No
Conversion: No

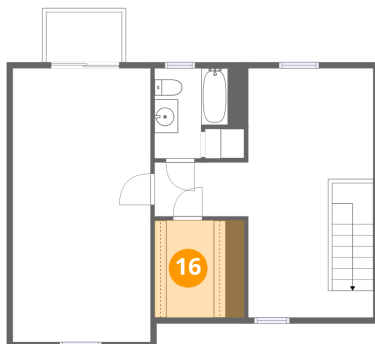
15 Floor 3 - Balcony



Dimensions: 6'4" x 4'2"
Area: 27 sq. ft
Counted as living area: No

Heated: No
Finished: No
Enclosed: No
Contiguous: Yes
Permitted: Yes
Wet space: No
Addition: No
Conversion: No

16 Floor 3 - W.I.C.



Dimensions: 6'0" x 8'2"
Area: 49 sq. ft
Counted as living area: Yes

Heated: Yes
Finished: Yes
Enclosed: Yes
Contiguous: Yes
Permitted: Yes
Wet space: No
Addition: No
Conversion: No