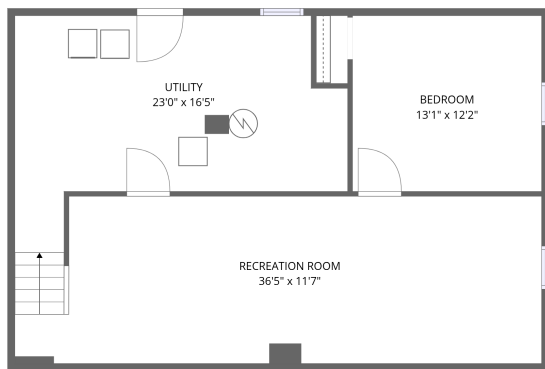
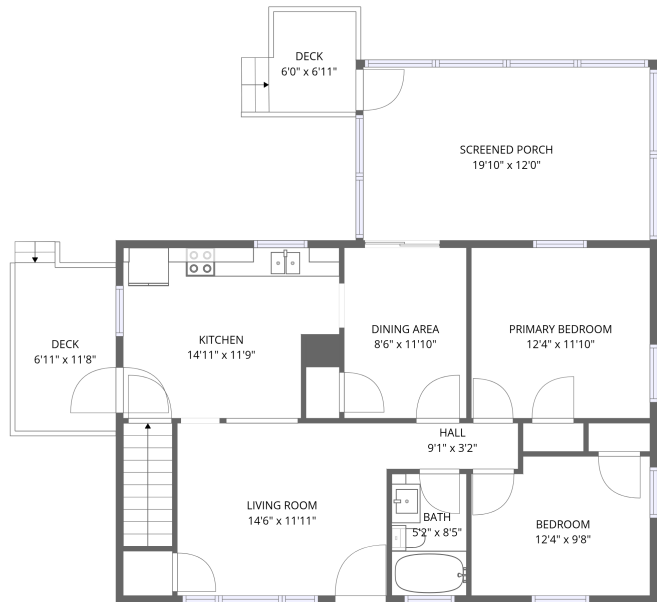


Home data report

334 Lynn Haven Circle, Vinton, Virginia 24179, United States



Basement



1st floor

Total Area: 1472 sq. ft

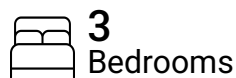
Basement: 595 sq. ft, 1st Floor: 877 sq. ft

Excluded: Utility 282 sq. ft, Screened porch 238 sq. ft, Deck 132 sq. ft, Walls: 146 sq. ft

Property summary



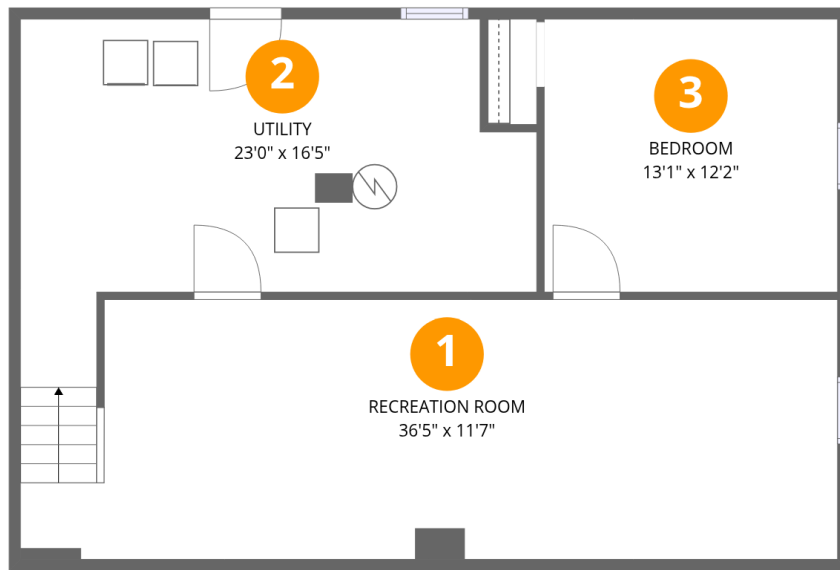
2 Floors



3 Bedrooms



1 Bathrooms



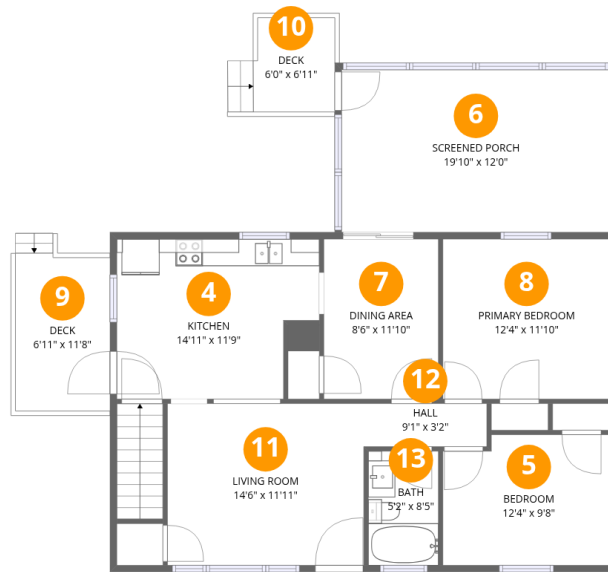
Room dimensions

Floor 1 Below grade

Total:595sqft

Excluded: 282sqft

#		Dimensions	sqft	Counted as living area
1	Recreation Room	36'5" x 11'7"	422 sq. ft	Yes
2	Utility	23'0" x 16'5"	377 sq. ft	No
3	Bedroom	13'1" x 12'2"	159 sq. ft	Yes



Room dimensions

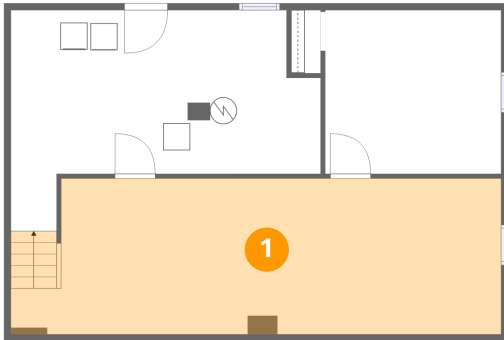
Floor 2

Total:877sqft

Excluded: 370sqft

#		Dimensions	sqft	Counted as living area
4	Kitchen	14'11" x 11'9"	176 sq. ft	Yes
5	Bedroom	12'4" x 9'8"	119 sq. ft	Yes
6	Screened Porch	19'10" x 12'0"	238 sq. ft	No
7	Dining Area	8'6" x 11'10"	100 sq. ft	Yes
8	Primary Bedroom	12'4" x 11'10"	146 sq. ft	Yes
9	Deck	6'11" x 11'8"	81 sq. ft	No
10	Deck	6'0" x 6'11"	42 sq. ft	No
11	Living Room	14'6" x 11'11"	173 sq. ft	Yes
12	Hall	9'1" x 3'2"	29 sq. ft	Yes
13	Bath	5'2" x 8'5"	44 sq. ft	Yes

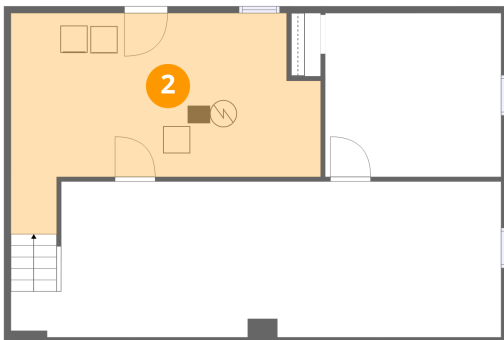
1 Floor 1 - Recreation Room



Dimensions: 36'5" x 11'7"
Area: 422 sq. ft
Counted as living area: Yes

Heated: Yes
Finished: Yes
Enclosed: Yes
Contiguous: Yes
Permitted: Yes
Wet space: No
Addition: No
Conversion: No

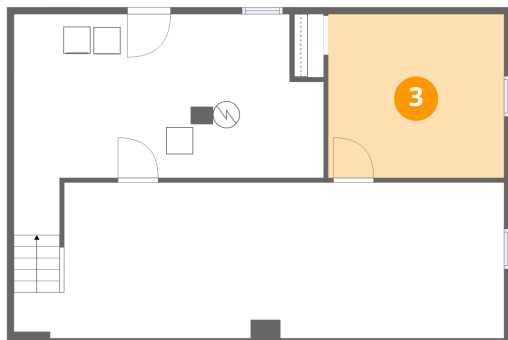
2 Floor 1 - Utility



Dimensions: 23'0" x 16'5"
Area: 377 sq. ft
Counted as living area: No

Heated: Yes
Finished: No
Enclosed: Yes
Contiguous: Yes
Permitted: Yes
Wet space: No
Addition: No
Conversion: No

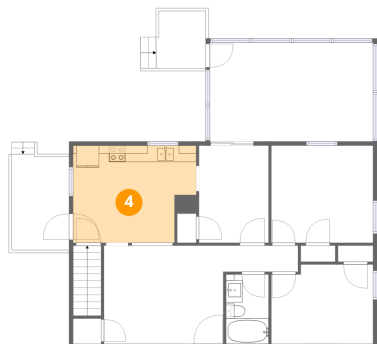
3 Floor 1 - Bedroom



Dimensions: 13'1" x 12'2"
Area: 159 sq. ft
Counted as living area: Yes

Heated: Yes
Finished: Yes
Enclosed: Yes
Contiguous: Yes
Permitted: Yes
Wet space: No
Addition: No
Conversion: No

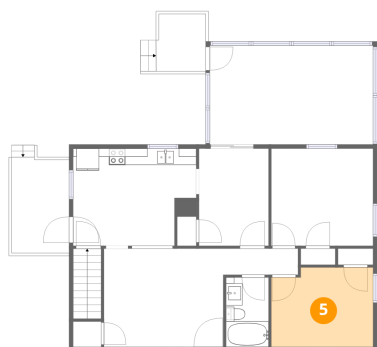
4 Floor 2 - Kitchen



Dimensions: 14'11" x 11'9"
Area: 176 sq. ft
Counted as living area: Yes

Heated: Yes
Finished: Yes
Enclosed: Yes
Contiguous: Yes
Permitted: Yes
Wet space: No
Addition: No
Conversion: No

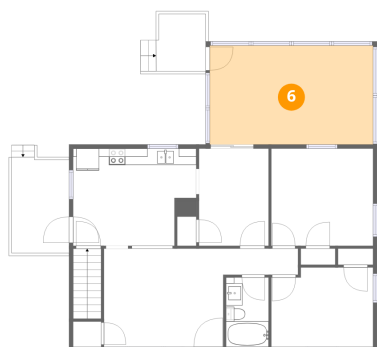
5 Floor 2 - Bedroom



Dimensions: 12'4" x 9'8"
Area: 119 sq. ft
Counted as living area: Yes

Heated: Yes
Finished: Yes
Enclosed: Yes
Contiguous: Yes
Permitted: Yes
Wet space: No
Addition: No
Conversion: No

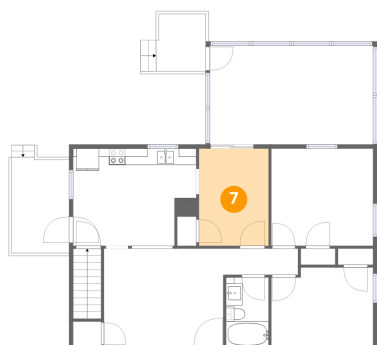
6 Floor 2 - Screened Porch



Dimensions: 19'10" x 12'0"
Area: 238 sq. ft
Counted as living area: No

Heated: No
Finished: No
Enclosed: No
Contiguous: Yes
Permitted: Yes
Wet space: No
Addition: No
Conversion: No

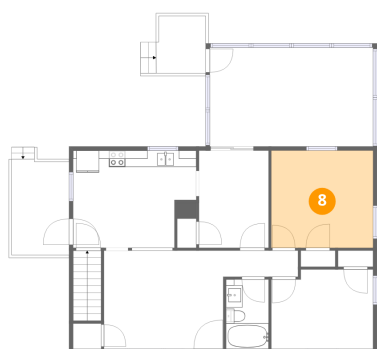
7 Floor 2 - Dining Area



Dimensions: 8'6" x 11'10"
Area: 100 sq. ft
Counted as living area: Yes

Heated: Yes
Finished: Yes
Enclosed: Yes
Contiguous: Yes
Permitted: Yes
Wet space: No
Addition: No
Conversion: No

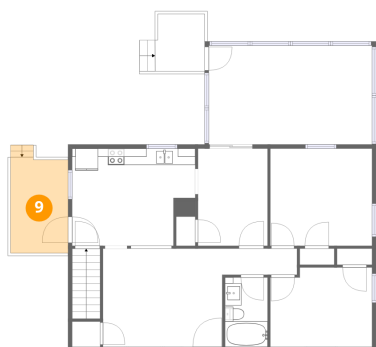
8 Floor 2 - Primary Bedroom



Dimensions: 12'4" x 11'10"
Area: 146 sq. ft
Counted as living area: Yes

Heated: Yes
Finished: Yes
Enclosed: Yes
Contiguous: Yes
Permitted: Yes
Wet space: No
Addition: No
Conversion: No

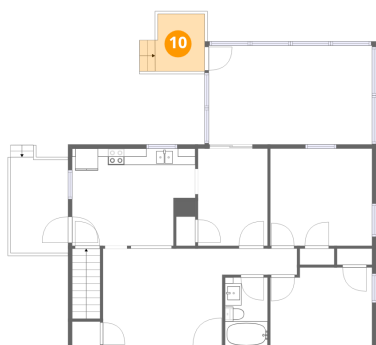
9 Floor 2 - Deck



Dimensions: 6'11" x 11'8"
Area: 81 sq. ft
Counted as living area: No

Heated: No
Finished: No
Enclosed: No
Contiguous: Yes
Permitted: Yes
Wet space: No
Addition: No
Conversion: No

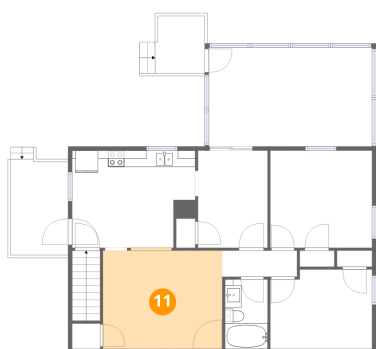
10 Floor 2 - Deck



Dimensions: 6'0" x 6'11"
Area: 42 sq. ft
Counted as living area: No

Heated: No
Finished: No
Enclosed: No
Contiguous: Yes
Permitted: Yes
Wet space: No
Addition: No
Conversion: No

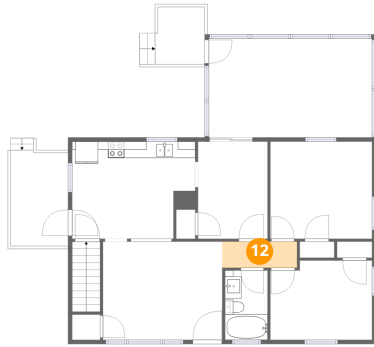
11 Floor 2 - Living Room



Dimensions: 14'6" x 11'11"
Area: 173 sq. ft
Counted as living area: Yes

Heated: Yes
Finished: Yes
Enclosed: Yes
Contiguous: Yes
Permitted: Yes
Wet space: No
Addition: No
Conversion: No

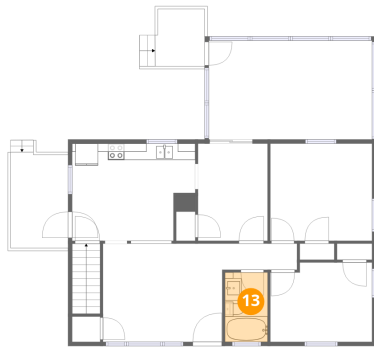
12 Floor 2 - Hall



Dimensions: 9'1" x 3'2"
Area: 29 sq. ft
Counted as living area: Yes

Heated: Yes
Finished: Yes
Enclosed: Yes
Contiguous: Yes
Permitted: Yes
Wet space: No
Addition: No
Conversion: No

13 Floor 2 - Bath



Dimensions: 5'2" x 8'5"
Area: 44 sq. ft
Counted as living area: Yes

Heated: Yes
Finished: Yes
Enclosed: Yes
Contiguous: Yes
Permitted: Yes
Wet space: Yes
Addition: No
Conversion: No