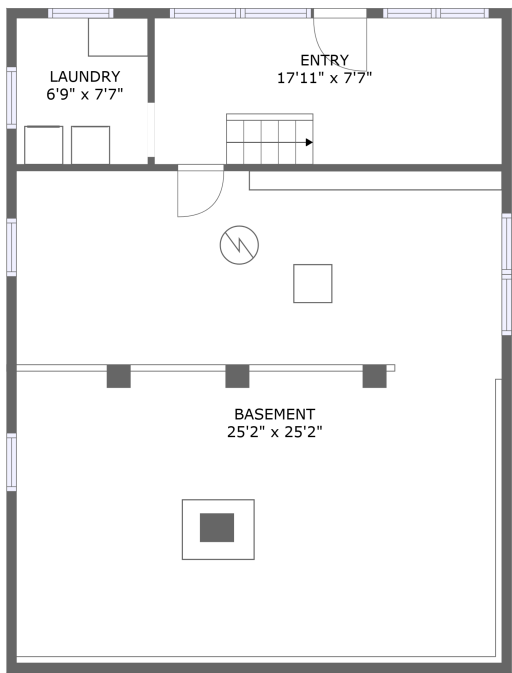
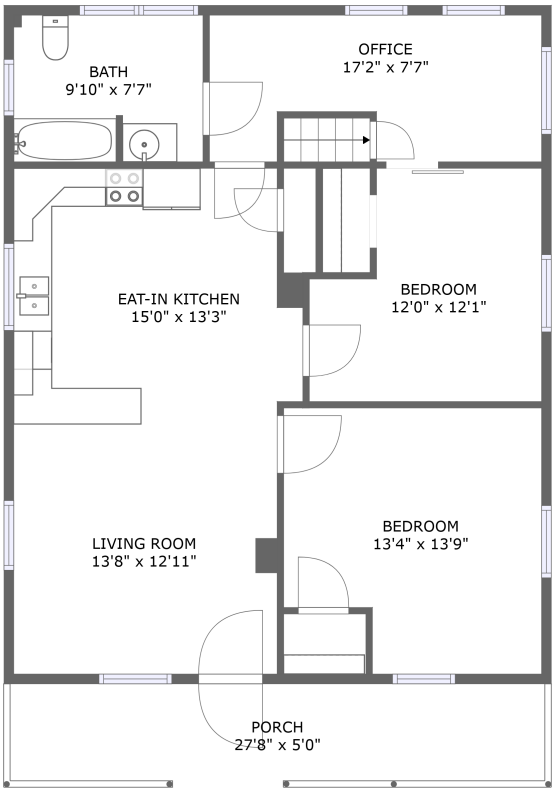


Home report

2248 Vale Avenue Northeast, Roanoke, Virginia 24012, United States



FLOOR 1



FLOOR 2


Total Area: 932 sq. ft

Below Ground: 0 sq. ft, Floor 2: 932 sq. ft

Excluded: Basement 649 sq. ft, Laundry 54 sq. ft, Entry 136 sq. ft, Porch 139 sq. ft, Walls: 123 sq. ft

Property summary

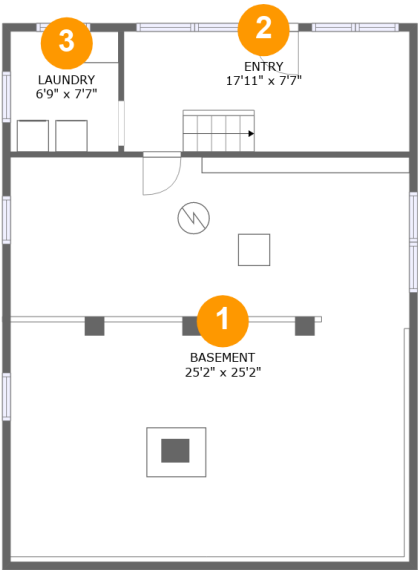
 2 Floors

 2 Bedrooms

 1 Bathrooms

Home report

2248 Vale Avenue Northeast, Roanoke, Virginia 24012, United States



Room dimensions

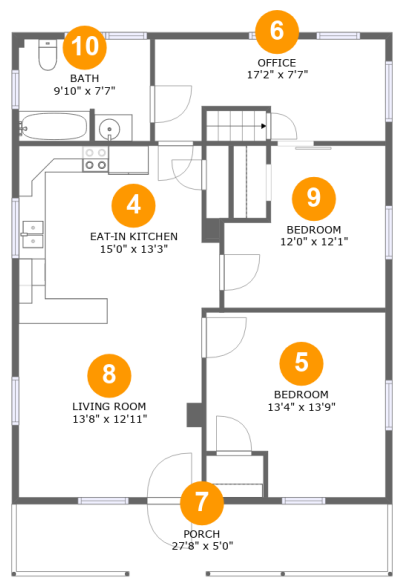
Floor 1 Below ground

Total:0sqft Excluded: 839sqft

#		Max Dimensions	sqft	Included
1	Basement	25'2" x 25'2"	640 sq. ft	No
2	Entry	17'11" x 7'7"	136 sq. ft	No
3	Laundry	6'9" x 7'7"	52 sq. ft	No

Home report

2248 Vale Avenue Northeast, Roanoke, Virginia 24012, United States



Room dimensions

Floor 2

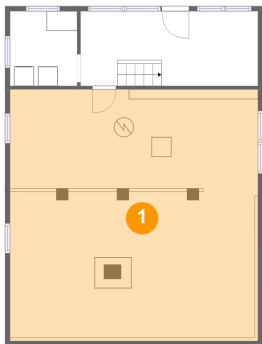
Total:932sqft

Excluded: 139sqft

#		Max Dimensions	sqft	Included
4	Eat-in Kitchen	15'0" x 13'3"	187 sq. ft	Yes
5	Bedroom	13'4" x 13'9"	168 sq. ft	Yes
6	Office	17'2" x 7'7"	117 sq. ft	Yes
7	Porch	27'8" x 5'0"	139 sq. ft	No
8	Living Room	13'8" x 12'11"	177 sq. ft	Yes
9	Bedroom	12'0" x 12'1"	125 sq. ft	Yes
10	Bath	9'10" x 7'7"	74 sq. ft	Yes

2248 Vale Avenue Northeast, Roanoke, Virginia 24012, United States

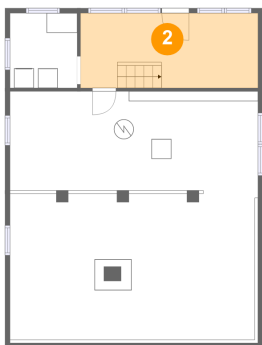
1 Floor 1 - Basement



Max Dimensions: 25'2" x 25'2"
Calculated Area: 640 sq. ft
Included: No

Heated: Yes
Finished: No
Enclosed: Yes
Contiguous: Yes
Permitted: Yes
Wet space: No
Addition: No
Conversion: No

2 Floor 1 - Entry

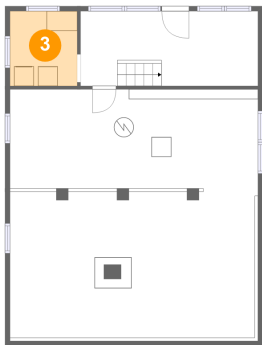


Max Dimensions: 17'11" x 7'7"
Calculated Area: 136 sq. ft
Included: No

Heated: Yes
Finished: No
Enclosed: Yes
Contiguous: Yes
Permitted: Yes
Wet space: No
Addition: No
Conversion: No

2248 Vale Avenue Northeast, Roanoke, Virginia 24012, United States

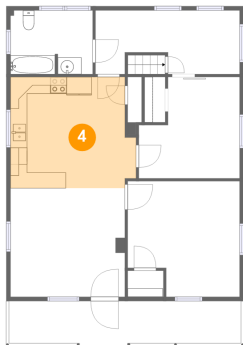
3 Floor 1 - Laundry



Max Dimensions: 6'9" x 7'7"
Calculated Area: 52 sq. ft
Included: No

Heated: Yes
Finished: No
Enclosed: Yes
Contiguous: Yes
Permitted: Yes
Wet space: No
Addition: No
Conversion: No

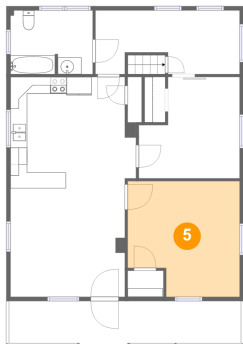
4 Floor 2 - Eat-in Kitchen



Max Dimensions: 15'0" x 13'3"
Calculated Area: 187 sq. ft
Included: Yes

Heated: Yes
Finished: Yes
Enclosed: Yes
Contiguous: Yes
Permitted: Yes
Wet space: No
Addition: No
Conversion: No

5 Floor 2 - Bedroom

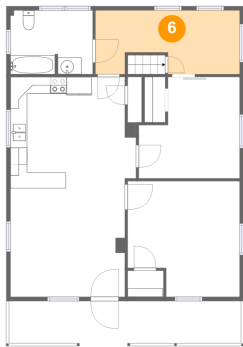


Max Dimensions: 13'4" x 13'9"
Calculated Area: 168 sq. ft
Included: Yes

Heated: Yes
Finished: Yes
Enclosed: Yes
Contiguous: Yes
Permitted: Yes
Wet space: No
Addition: No
Conversion: No

2248 Vale Avenue Northeast, Roanoke, Virginia 24012, United States

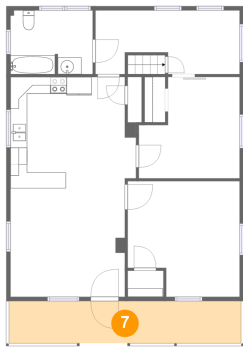
6 Floor 2 - Office



Max Dimensions: 17'2" x 7'7"
Calculated Area: 117 sq. ft
Included: Yes

Heated: Yes
Finished: Yes
Enclosed: Yes
Contiguous: Yes
Permitted: Yes
Wet space: No
Addition: No
Conversion: No

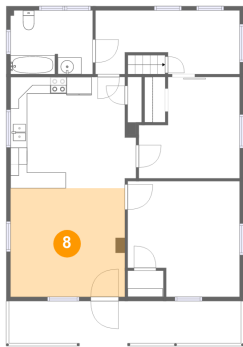
7 Floor 2 - Porch



Max Dimensions: 27'8" x 5'0"
Calculated Area: 139 sq. ft
Included: No

Heated: No
Finished: Yes
Enclosed: No
Contiguous: Yes
Permitted: Yes
Wet space: No
Addition: No
Conversion: No

8 Floor 2 - Living Room

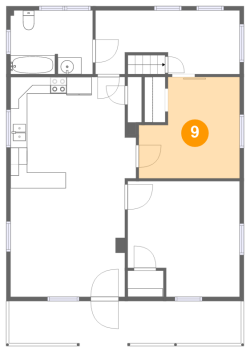


Max Dimensions: 13'8" x 12'11"
Calculated Area: 177 sq. ft
Included: Yes

Heated: Yes
Finished: Yes
Enclosed: Yes
Contiguous: Yes
Permitted: Yes
Wet space: No
Addition: No
Conversion: No

2248 Vale Avenue Northeast, Roanoke, Virginia 24012, United States

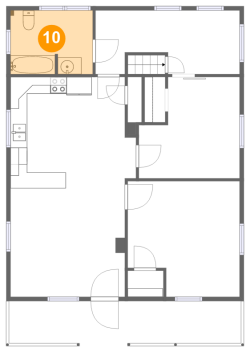
9 Floor 2 - Bedroom



Max Dimensions: 12'0" x 12'1"
Calculated Area: 125 sq. ft
Included: Yes

Heated: Yes
Finished: Yes
Enclosed: Yes
Contiguous: Yes
Permitted: Yes
Wet space: No
Addition: No
Conversion: No

10 Floor 2 - Bath



Max Dimensions: 9'10" x 7'7"
Calculated Area: 74 sq. ft
Included: Yes

Heated: Yes
Finished: Yes
Enclosed: Yes
Contiguous: Yes
Permitted: Yes
Wet space: Yes
Addition: No
Conversion: No