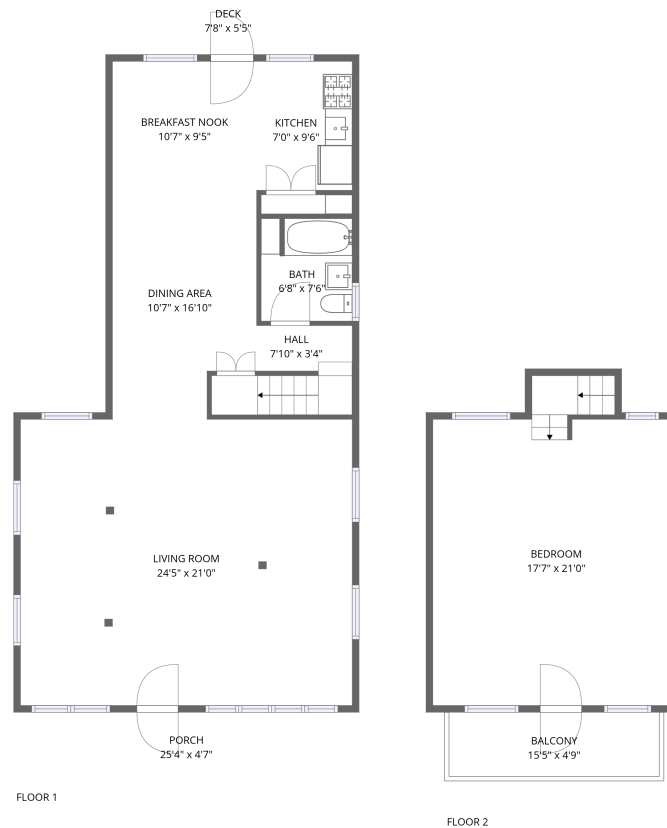


Home report

35 Valley Avenue, Craigville, Centerville, Barnstable
County, Massachusetts, United States, 02632



Total Area: 1366 sq. ft

Floor 1: 976 sq. ft, Floor 2: 390 sq. ft

Excluded: Porch 117 sq. ft, Deck 42 sq. ft, Balcony 73 sq. ft, Walls: 116 sq. ft

Property summary

 **2** Floors

 **1** Bedrooms

 **1** Bathrooms

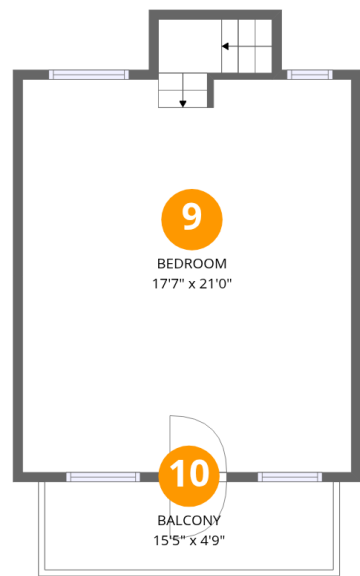


Room dimensions

Floor 1 Total:976sqft Excluded: 159sqft

#		Max Dimensions	sqft	Included
1	Porch	25'4" x 4'7"	117 sq. ft	No
2	Kitchen	7'0" x 9'6"	67 sq. ft	Yes
3	Dining Area	10'7" x 16'10"	163 sq. ft	Yes
4	Bath	6'8" x 7'6"	46 sq. ft	Yes
5	Hall	7'10" x 3'4"	46 sq. ft	Yes
6	Living Room	24'5" x 21'0"	513 sq. ft	Yes
7	Deck	7'8" x 5'5"	42 sq. ft	No
8	Breakfast Nook	10'7" x 9'5"	100 sq. ft	Yes

35 Valley Avenue, Craigville, Centerville, Barnstable
County, Massachusetts, United States, 02632



Room dimensions

Floor 2 Total:390sqft Excluded: 73sqft

#		Max Dimensions	sqft	Included
9	Bedroom	17'7" x 21'0"	388 sq. ft	Yes
10	Balcony	15'5" x 4'9"	73 sq. ft	No

1 Floor 1 - Porch



Max Dimensions: 25'4" x
4'7"
Calculated Area: 117 sq. ft
Included: No

Heated: No
Finished: No
Enclosed: No
Contiguous:
Yes
Permitted: Yes
Wet space: No
Addition: No
Conversion: No

2 Floor 1 - Kitchen



Max Dimensions: 7'0" x 9'6"
Calculated Area: 67 sq. ft
Included: Yes

Heated: Yes
Finished: Yes
Enclosed: Yes
Contiguous: Yes
Permitted: Yes
Wet space: No
Addition: No
Conversion: No

3 Floor 1 - Dining Area



Max Dimensions: 10'7" x 16'10"
Calculated Area: 163 sq. ft
Included: Yes

Heated: Yes
Finished: Yes
Enclosed: Yes
Contiguous: Yes
Permitted: Yes
Wet space: No
Addition: No
Conversion: No

4 Floor 1 - Bath



Max Dimensions: 6'8" x 7'6"
Calculated Area: 46 sq. ft
Included: Yes

Heated: Yes
Finished: Yes
Enclosed: Yes
Contiguous: Yes
Permitted: Yes
Wet space: Yes
Addition: No
Conversion: No

5 Floor 1 - Hall



Max Dimensions: 7'10" x 3'4"
Calculated Area: 46 sq. ft
Included: Yes

Heated: Yes
Finished: Yes
Enclosed: Yes
Contiguous: Yes
Permitted: Yes
Wet space: No
Addition: No
Conversion: No

35 Valley Avenue, Craigville, Centerville, Barnstable
County, Massachusetts, United States, 02632

6 Floor 1 - Living Room



Max Dimensions: 24'5" x
21'0"
Calculated Area: 513 sq. ft
Included: Yes

Heated: Yes
Finished: Yes
Enclosed: Yes
Contiguous:
Yes
Permitted: Yes
Wet space: No
Addition: No
Conversion: No

7 Floor 1 - Deck



Max Dimensions: 7'8" x 5'5"
Calculated Area: 42 sq. ft
Included: No

Heated: No
Finished: No
Enclosed: No
Contiguous: Yes
Permitted: Yes
Wet space: No
Addition: No
Conversion: No

8 Floor 1 - Breakfast Nook



Max Dimensions: 10'7" x
9'5"
Calculated Area: 100 sq. ft
Included: Yes

Heated: Yes
Finished: Yes
Enclosed: Yes
Contiguous:
Yes
Permitted: Yes
Wet space: No
Addition: No
Conversion: No

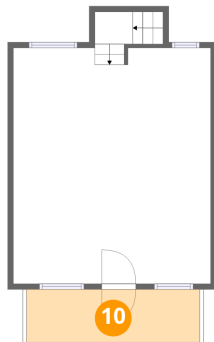
9 Floor 2 - Bedroom



Max Dimensions: 17'7" x
21'0"
Calculated Area: 388 sq. ft
Included: No

Heated: Yes
Finished: Yes
Enclosed: Yes
Contiguous:
No
Permitted: Yes
Wet space: No
Addition: No
Conversion:
No

10 Floor 2 - Balcony



Max Dimensions: 15'5" x
4'9"
Calculated Area: 73 sq. ft
Included: No

Heated: No
Finished: No
Enclosed: No
Contiguous:
Yes
Permitted: Yes
Wet space: No
Addition: No
Conversion: No