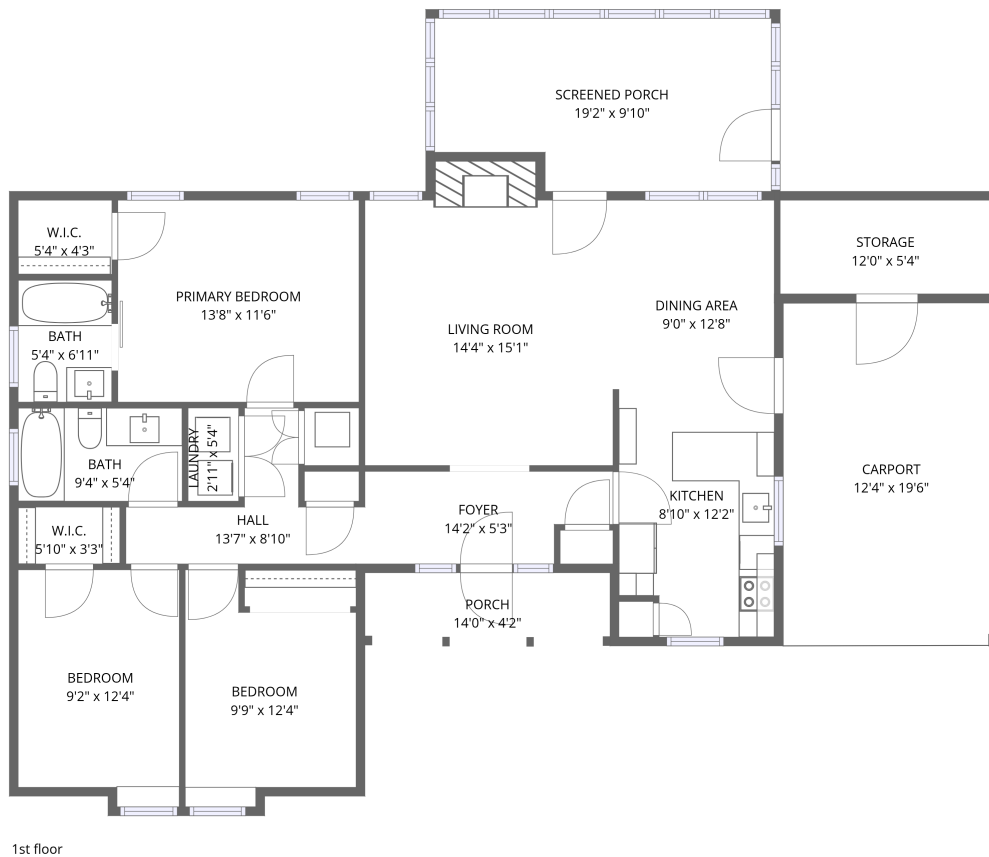


Home data report

1070 Greenview Road, Collierville, Shelby County, Tennessee,
United States, 38017



Total Area: 1190 sq. ft

1st Floor: 1190 sq. ft

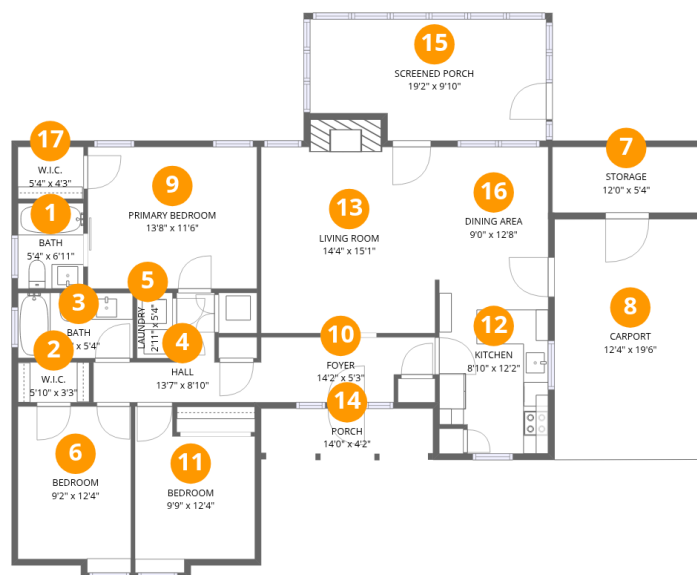
Excluded: Storage 64 sq. ft, Screened porch 175 sq. ft, Porch 58 sq. ft, Carport 241 sq. ft,
Fireplace 15 sq. ft, Walls: 109 sq. ft

Property summary



Home data report

1070 Greenview Road, Collierville, Shelby County, Tennessee, United States, 38017



Room dimensions

Floor 1

Total: 1190sqft Excluded: 553sqft

#		Dimensions	sqft	Counted as living area
1	Bath	5'4" x 6'11"	37 sq. ft	Yes
2	W.I.C.	5'10" x 3'3"	19 sq. ft	Yes
3	Bath	9'4" x 5'4"	50 sq. ft	Yes
4	Hall	13'7" x 8'10"	121 sq. ft	Yes
5	Laundry	2'11" x 5'4"	15 sq. ft	Yes
6	Bedroom	9'2" x 12'4"	113 sq. ft	Yes
7	Storage	12'0" x 5'4"	64 sq. ft	No
8	Carport	12'4" x 19'6"	240 sq. ft	No
9	Primary Bedroom	13'8" x 11'6"	157 sq. ft	Yes
10	Foyer	14'2" x 5'3"	75 sq. ft	Yes
11	Bedroom	9'9" x 12'4"	120 sq. ft	Yes

Home data report

**1070 Greenview Road, Collierville, Shelby County, Tennessee,
United States, 38017**

#		Dimensions	sqft	Counted as living area
12	Kitchen	8'10" x 12'2"	108 sq. ft	Yes
13	Living Room	14'4" x 15'1"	216 sq. ft	Yes
14	Porch	14'0" x 4'2"	58 sq. ft	No
15	Screened Porch	19'2" x 9'10"	189 sq. ft	No
16	Dining Area	9'0" x 12'8"	114 sq. ft	Yes
17	W.I.C.	5'4" x 4'3"	23 sq. ft	Yes

1070 Greenview Road, Collierville, Shelby County, Tennessee,
United States, 38017

1 Floor 1 - Bath



Dimensions: 5'4" x 6'11"
Area: 37 sq. ft
Counted as living area: Yes

Heated: Yes
Finished: Yes
Enclosed: Yes
Contiguous: Yes
Permitted: Yes
Wet space: Yes
Addition: No
Conversion: No

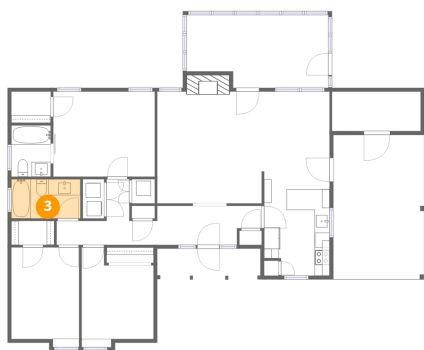
2 Floor 1 - W.I.C.



Dimensions: 5'10" x 3'3"
Area: 19 sq. ft
Counted as living area: Yes

Heated: Yes
Finished: Yes
Enclosed: Yes
Contiguous: Yes
Permitted: Yes
Wet space: No
Addition: No
Conversion: No

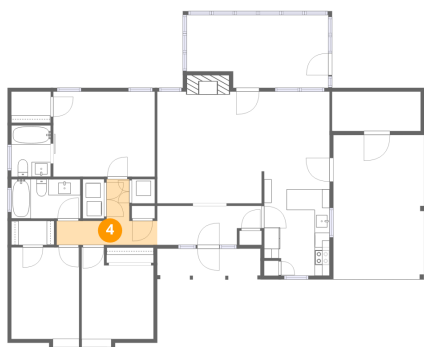
3 Floor 1 - Bath



Dimensions: 9'4" x 5'4"
Area: 50 sq. ft
Counted as living area: Yes

Heated: Yes
Finished: Yes
Enclosed: Yes
Contiguous: Yes
Permitted: Yes
Wet space: Yes
Addition: No
Conversion: No

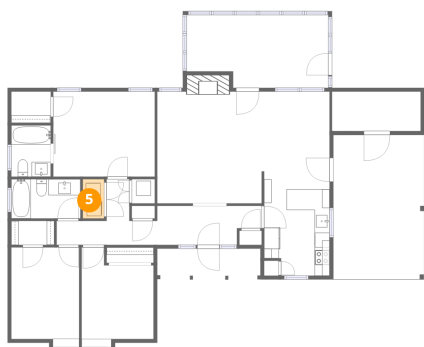
4 Floor 1 - Hall



Dimensions: 13'7" x 8'10"
Area: 121 sq. ft
Counted as living area: Yes

Heated: Yes
Finished: Yes
Enclosed: Yes
Contiguous: Yes
Permitted: Yes
Wet space: No
Addition: No
Conversion: No

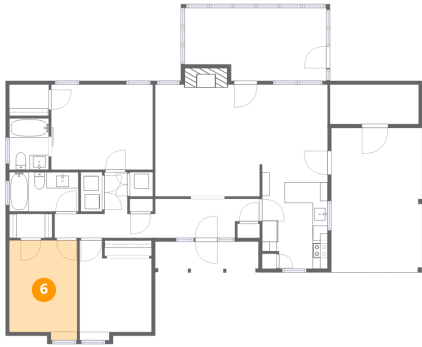
5 Floor 1 - Laundry



Dimensions: 2'11" x 5'4"
Area: 15 sq. ft
Counted as living area: Yes

Heated: Yes
Finished: Yes
Enclosed: Yes
Contiguous: Yes
Permitted: Yes
Wet space: No
Addition: No
Conversion: No

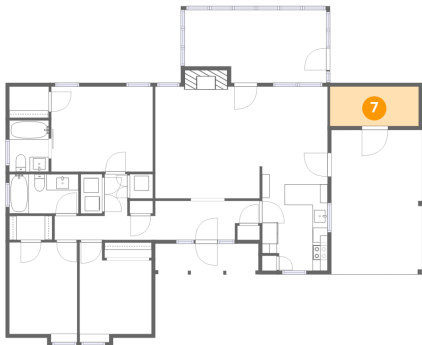
6 Floor 1 - Bedroom



Dimensions: 9'2" x 12'4"
Area: 113 sq. ft
Counted as living area: Yes

Heated: Yes
Finished: Yes
Enclosed: Yes
Contiguous: Yes
Permitted: Yes
Wet space: No
Addition: No
Conversion: No

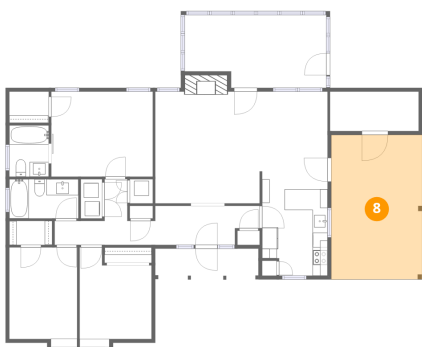
7 Floor 1 - Storage



Dimensions: 12'0" x 5'4"
Area: 64 sq. ft
Counted as living area: No

Heated: No
Finished: No
Enclosed: No
Contiguous: Yes
Permitted: Yes
Wet space: No
Addition: No
Conversion: No

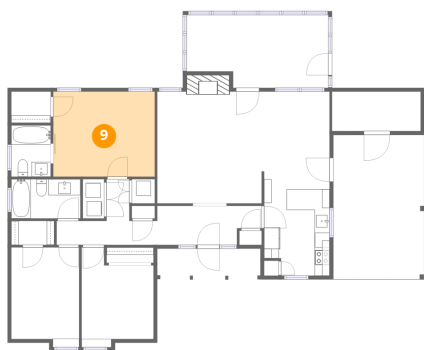
8 Floor 1 - Carport



Dimensions: 12'4" x 19'6"
Area: 240 sq. ft
Counted as living area: No

Heated: No
Finished: Yes
Enclosed: No
Contiguous: Yes
Permitted: Yes
Wet space: No
Addition: No
Conversion: No

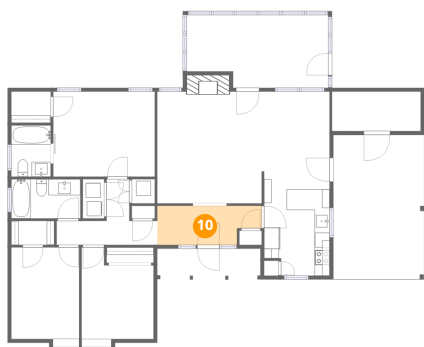
9 Floor 1 - Primary Bedroom



Dimensions: 13'8" x 11'6"
Area: 157 sq. ft
Counted as living area: Yes

Heated: Yes
Finished: Yes
Enclosed: Yes
Contiguous: Yes
Permitted: Yes
Wet space: No
Addition: No
Conversion: No

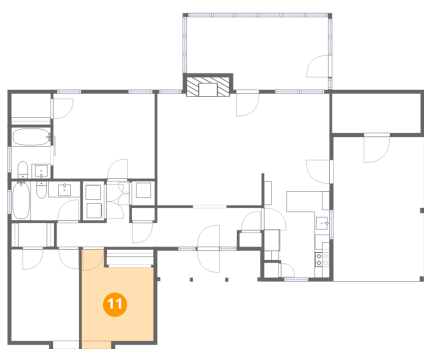
10 Floor 1 - Foyer



Dimensions: 14'2" x 5'3"
Area: 75 sq. ft
Counted as living area: Yes

Heated: Yes
Finished: Yes
Enclosed: Yes
Contiguous: Yes
Permitted: Yes
Wet space: No
Addition: No
Conversion: No

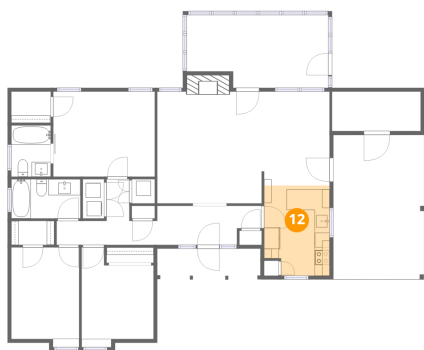
11 Floor 1 - Bedroom



Dimensions: 9'9" x 12'4"
Area: 120 sq. ft
Counted as living area: Yes

Heated: Yes
Finished: Yes
Enclosed: Yes
Contiguous: Yes
Permitted: Yes
Wet space: No
Addition: No
Conversion: No

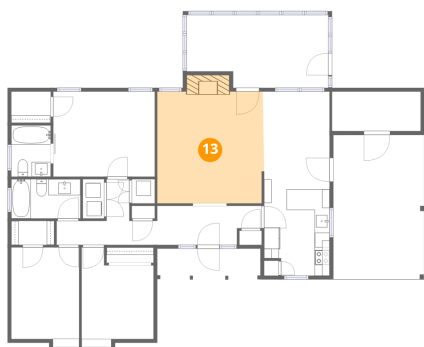
12 Floor 1 - Kitchen



Dimensions: 8'10" x 12'2"
Area: 108 sq. ft
Counted as living area: Yes

Heated: Yes
Finished: Yes
Enclosed: Yes
Contiguous: Yes
Permitted: Yes
Wet space: No
Addition: No
Conversion: No

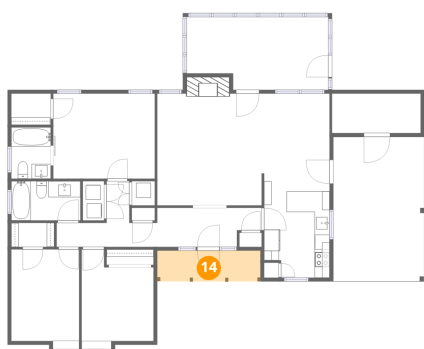
13 Floor 1 - Living Room



Dimensions: 14'4" x 15'1"
Area: 216 sq. ft
Counted as living area: Yes

Heated: Yes
Finished: Yes
Enclosed: Yes
Contiguous: Yes
Permitted: Yes
Wet space: No
Addition: No
Conversion: No

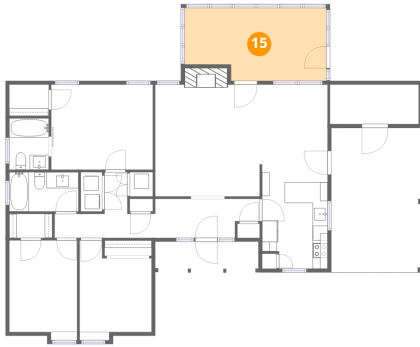
14 Floor 1 - Porch



Dimensions: 14'0" x 4'2"
Area: 58 sq. ft
Counted as living area: No

Heated: No
Finished: No
Enclosed: No
Contiguous: Yes
Permitted: Yes
Wet space: No
Addition: No
Conversion: No

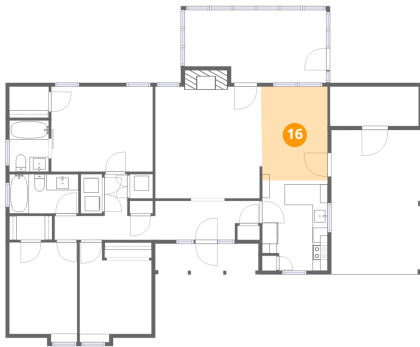
15 Floor 1 - Screened Porch



Dimensions: 19'2" x 9'10"
Area: 189 sq. ft
Counted as living area: No

Heated: No
Finished: No
Enclosed: No
Contiguous: Yes
Permitted: Yes
Wet space: No
Addition: No
Conversion: No

16 Floor 1 - Dining Area



Dimensions: 9'0" x 12'8"
Area: 114 sq. ft
Counted as living area: Yes

Heated: Yes
Finished: Yes
Enclosed: Yes
Contiguous: Yes
Permitted: Yes
Wet space: No
Addition: No
Conversion: No

17 Floor 1 - W.I.C.



Dimensions: 5'4" x 4'3"
Area: 23 sq. ft
Counted as living area: Yes

Heated: Yes
Finished: Yes
Enclosed: Yes
Contiguous: Yes
Permitted: Yes
Wet space: No
Addition: No
Conversion: No