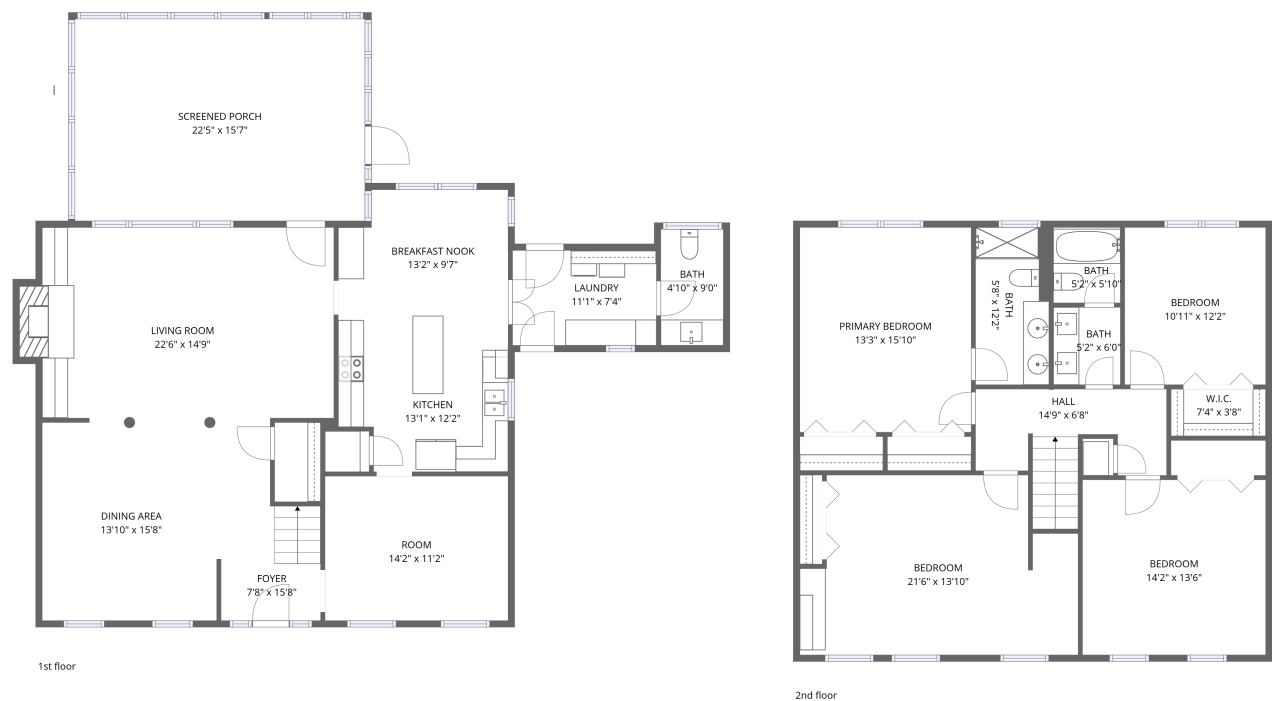


Home data report

2143 Woodside Drive, Farmington South, Germantown, Shelby County, Tennessee, United States, 38138



Total Area: 2446 sq. ft

1st Floor: 1257 sq. ft, 2nd Floor: 1189 sq. ft

Excluded: Screened porch 350 sq. ft, Fireplace 12 sq. ft, Walls: 181 sq. ft

Property summary

 **2** Floors

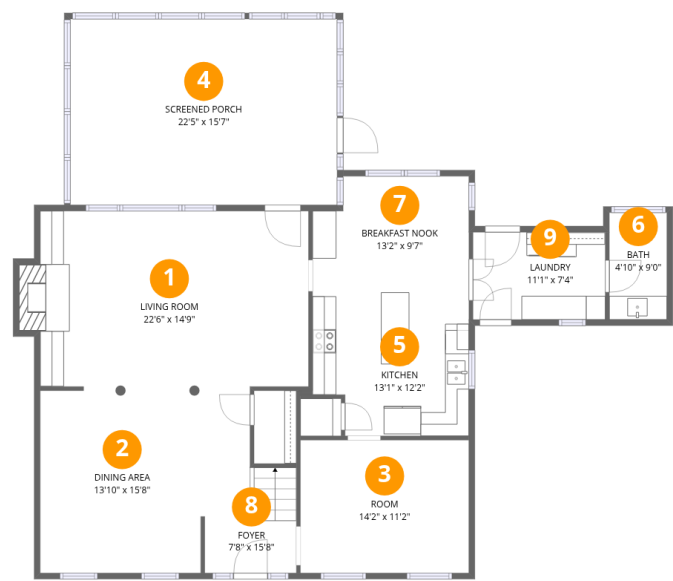
 **4** Bedrooms

 **2** Bathrooms

 **1** Half baths

Home data report

2143 Woodside Drive, Farmington South, Germantown, Shelby County, Tennessee, United States, 38138



Room dimensions

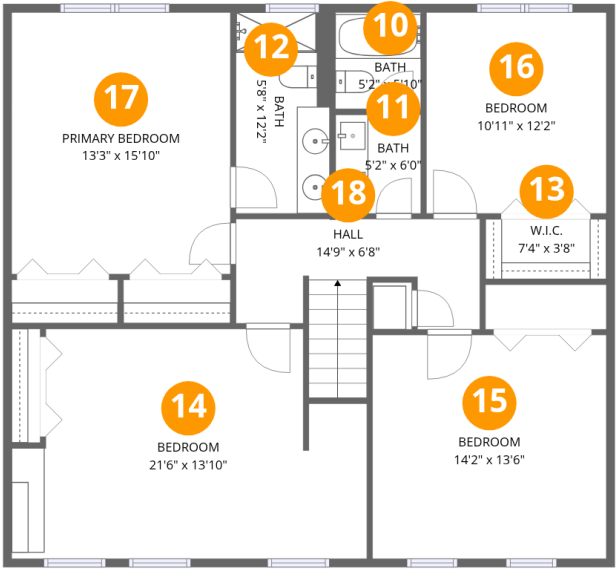
Floor 1

Total:1257sqft Excluded: 362sqft

#		Dimensions	sqft	Counted as living area
1	Living Room	22'6" x 14'9"	341 sq. ft	Yes
2	Dining Area	13'10" x 15'8"	213 sq. ft	Yes
3	Room	14'2" x 11'2"	158 sq. ft	Yes
4	Screened Porch	22'5" x 15'7"	350 sq. ft	No
5	Kitchen	13'1" x 12'2"	151 sq. ft	Yes
6	Bath	4'10" x 9'0"	43 sq. ft	Yes
7	Breakfast Nook	13'2" x 9'7"	118 sq. ft	Yes
8	Foyer	7'8" x 15'8"	94 sq. ft	Yes
9	Laundry	11'1" x 7'4"	82 sq. ft	Yes

Home data report

2143 Woodside Drive, Farmington South, Germantown, Shelby County, Tennessee, United States, 38138



Room dimensions

Floor 2

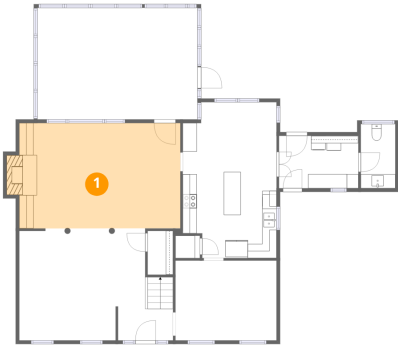
Total:1189sqft

Excluded: 0sqft

#		Dimensions	sqft	Counted as living area
10	Bath	5'2" x 5'10"	30 sq. ft	Yes
11	Bath	5'2" x 6'0"	31 sq. ft	Yes
12	Bath	5'8" x 12'2"	69 sq. ft	Yes
13	W.I.C.	7'4" x 3'8"	27 sq. ft	Yes
14	Bedroom	21'6" x 13'10"	266 sq. ft	Yes
15	Bedroom	14'2" x 13'6"	192 sq. ft	Yes
16	Bedroom	10'11" x 12'2"	132 sq. ft	Yes
17	Primary Bedroom	13'3" x 15'10"	209 sq. ft	Yes
18	Hall	14'9" x 6'8"	101 sq. ft	Yes

2143 Woodside Drive, Farmington South, Germantown, Shelby County, Tennessee, United States, 38138

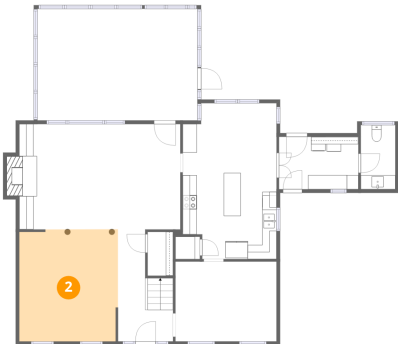
1 Floor 1 - Living Room



Dimensions: 22'6" x 14'9"
Area: 341 sq. ft
Counted as living area: Yes

Heated: Yes
Finished: Yes
Enclosed: Yes
Contiguous: Yes
Permitted: Yes
Wet space: No
Addition: No
Conversion: No

2 Floor 1 - Dining Area



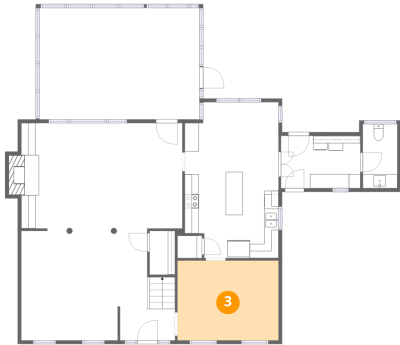
Dimensions: 13'10" x 15'8"
Area: 213 sq. ft
Counted as living area: Yes

Heated: Yes
Finished: Yes
Enclosed: Yes
Contiguous: Yes
Permitted: Yes
Wet space: No
Addition: No
Conversion: No

Home data report

2143 Woodside Drive, Farmington South, Germantown, Shelby County, Tennessee, United States, 38138

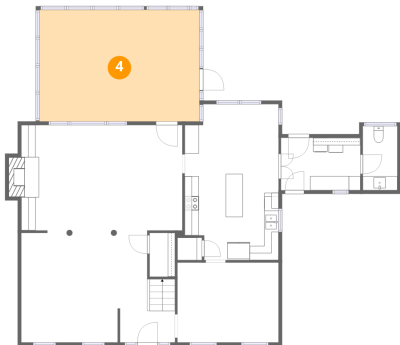
3 Floor 1 - Room



Dimensions: 14'2" x 11'2"
Area: 158 sq. ft
Counted as living area: Yes

Heated: Yes
Finished: Yes
Enclosed: Yes
Contiguous: Yes
Permitted: Yes
Wet space: No
Addition: No
Conversion: No

4 Floor 1 - Screened Porch



Dimensions: 22'5" x 15'7"
Area: 350 sq. ft
Counted as living area: No

Heated: No
Finished: No
Enclosed: No
Contiguous: Yes
Permitted: Yes
Wet space: No
Addition: No
Conversion: No

5 Floor 1 - Kitchen



Dimensions: 13'1" x 12'2"
Area: 151 sq. ft
Counted as living area: Yes

Heated: Yes
Finished: Yes
Enclosed: Yes
Contiguous: Yes
Permitted: Yes
Wet space: No
Addition: No
Conversion: No

2143 Woodside Drive, Farmington South, Germantown, Shelby County, Tennessee, United States, 38138

6 Floor 1 - Bath



Dimensions: 4'10" x 9'0"
Area: 43 sq. ft
Counted as living area: Yes

Heated: Yes
Finished: Yes
Enclosed: Yes
Contiguous: Yes
Permitted: Yes
Wet space: Yes
Addition: No
Conversion: No

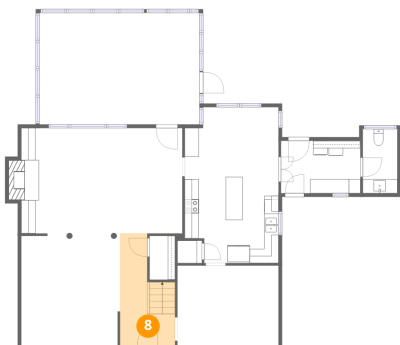
7 Floor 1 - Breakfast Nook



Dimensions: 13'2" x 9'7"
Area: 118 sq. ft
Counted as living area: Yes

Heated: Yes
Finished: Yes
Enclosed: Yes
Contiguous: Yes
Permitted: Yes
Wet space: No
Addition: No
Conversion: No

8 Floor 1 - Foyer



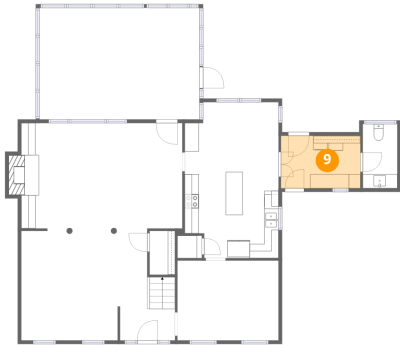
Dimensions: 7'8" x 15'8"
Area: 94 sq. ft
Counted as living area: Yes

Heated: Yes
Finished: Yes
Enclosed: Yes
Contiguous: Yes
Permitted: Yes
Wet space: No
Addition: No
Conversion: No

Home data report

2143 Woodside Drive, Farmington South, Germantown, Shelby County, Tennessee, United States, 38138

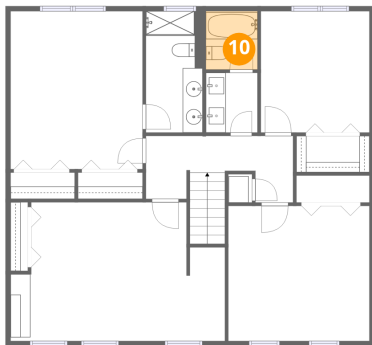
9 Floor 1 - Laundry



Dimensions: 11'1" x 7'4"
Area: 82 sq. ft
Counted as living area: Yes

Heated: Yes
Finished: Yes
Enclosed: Yes
Contiguous: Yes
Permitted: Yes
Wet space: No
Addition: No
Conversion: No

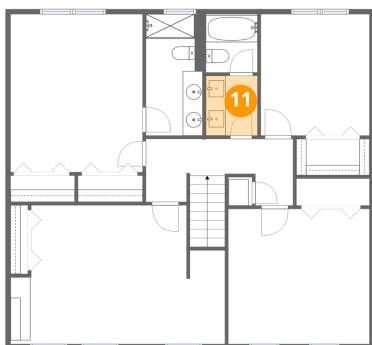
10 Floor 2 - Bath



Dimensions: 5'2" x 5'10"
Area: 30 sq. ft
Counted as living area: Yes

Heated: Yes
Finished: Yes
Enclosed: Yes
Contiguous: Yes
Permitted: Yes
Wet space: Yes
Addition: No
Conversion: No

11 Floor 2 - Bath

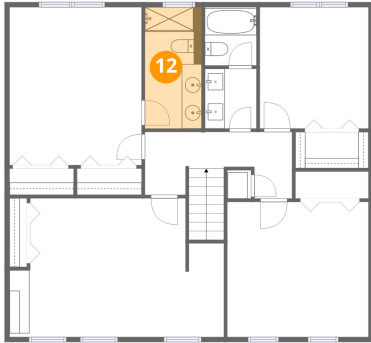


Dimensions: 5'2" x 6'0"
Area: 31 sq. ft
Counted as living area: Yes

Heated: Yes
Finished: Yes
Enclosed: Yes
Contiguous: Yes
Permitted: Yes
Wet space: Yes
Addition: No
Conversion: No

2143 Woodside Drive, Farmington South, Germantown, Shelby County, Tennessee, United States, 38138

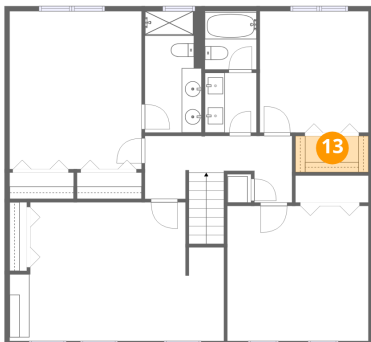
12 Floor 2 - Bath



Dimensions: 5'8" x 12'2"
Area: 69 sq. ft
Counted as living area: Yes

Heated: Yes
Finished: Yes
Enclosed: Yes
Contiguous: Yes
Permitted: Yes
Wet space: Yes
Addition: No
Conversion: No

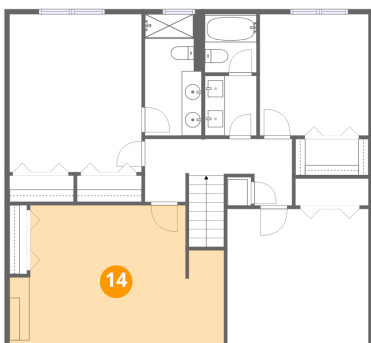
13 Floor 2 - W.I.C.



Dimensions: 7'4" x 3'8"
Area: 27 sq. ft
Counted as living area: Yes

Heated: Yes
Finished: Yes
Enclosed: Yes
Contiguous: Yes
Permitted: Yes
Wet space: No
Addition: No
Conversion: No

14 Floor 2 - Bedroom

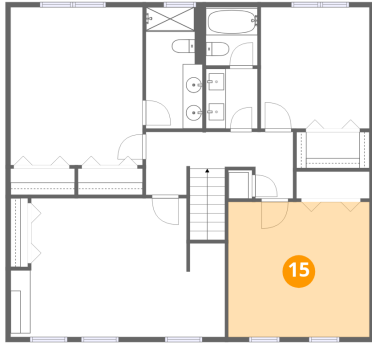


Dimensions: 21'6" x 13'10"
Area: 266 sq. ft
Counted as living area: Yes

Heated: Yes
Finished: Yes
Enclosed: Yes
Contiguous: Yes
Permitted: Yes
Wet space: No
Addition: No
Conversion: No

2143 Woodside Drive, Farmington South, Germantown, Shelby County, Tennessee, United States, 38138

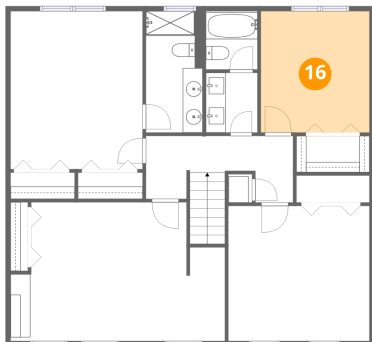
15 Floor 2 - Bedroom



Dimensions: 14'2" x 13'6"
Area: 192 sq. ft
Counted as living area: Yes

Heated: Yes
Finished: Yes
Enclosed: Yes
Contiguous: Yes
Permitted: Yes
Wet space: No
Addition: No
Conversion: No

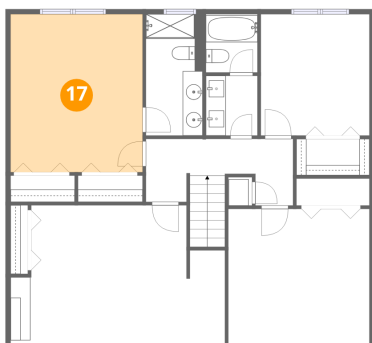
16 Floor 2 - Bedroom



Dimensions: 10'11" x 12'2"
Area: 132 sq. ft
Counted as living area: Yes

Heated: Yes
Finished: Yes
Enclosed: Yes
Contiguous: Yes
Permitted: Yes
Wet space: No
Addition: No
Conversion: No

17 Floor 2 - Primary Bedroom

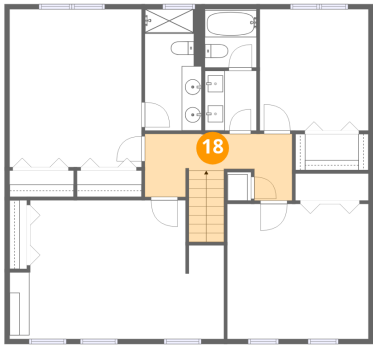


Dimensions: 13'3" x 15'10"
Area: 209 sq. ft
Counted as living area: Yes

Heated: Yes
Finished: Yes
Enclosed: Yes
Contiguous: Yes
Permitted: Yes
Wet space: No
Addition: No
Conversion: No

2143 Woodside Drive, Farmington South, Germantown, Shelby County, Tennessee, United States, 38138

18 Floor 2 - Hall



Dimensions: 14'9" x 6'8"
Area: 101 sq. ft
Counted as living area: Yes

Heated: Yes
Finished: Yes
Enclosed: Yes
Contiguous: Yes
Permitted: Yes
Wet space: No
Addition: No
Conversion: No