

Home data report

**8109 Winterwood Trail, Roanoke, Roanoke County, Virginia,
United States, 24018**



Total Area: 3874 sq. ft

1st Floor: 1138 sq. ft, 2nd Floor: 1385 sq. ft, 3rd Floor: 1351 sq. ft

Excluded: Storage 151 sq. ft, Fireplace 28 sq. ft, Garage 606 sq. ft, Deck 302 sq. ft, Walls: 263 sq. ft

Property summary

 **3** Floors

 **5** Bedrooms

 **3** Bathrooms

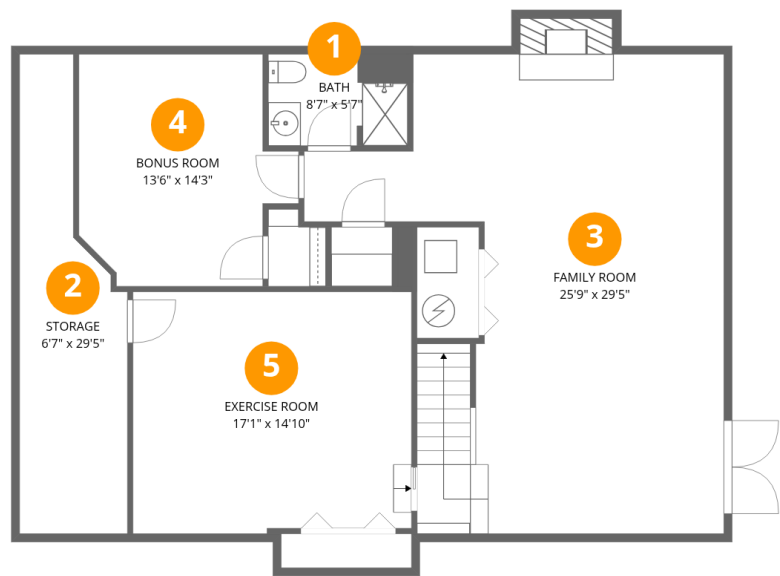
Home data report

8109 Winterwood Trail, Roanoke, Roanoke County, Virginia,
United States, 24018

 **1**
Half baths

 **1**
Garages

8109 Winterwood Trail, Roanoke, Roanoke County, Virginia,
United States, 24018



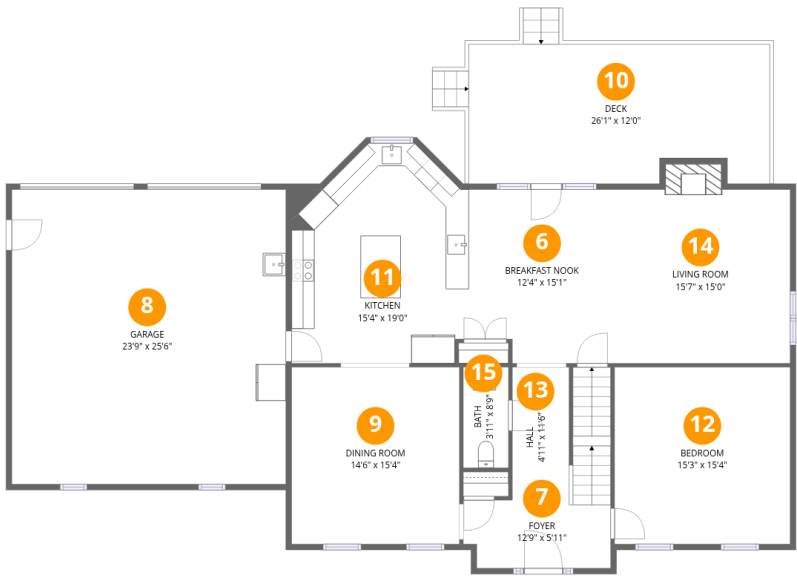
Room dimensions

Floor 1 Total:1138sqft Excluded: 166sqft

#		Dimensions	sqft	Counted as living area
1	Bath	8'7" x 5'7"	48 sq. ft	Yes
2	Storage	6'7" x 29'5"	195 sq. ft	No
3	Family Room	25'9" x 29'5"	757 sq. ft	Yes
4	Bonus Room	13'6" x 14'3"	192 sq. ft	Yes
5	Exercise Room	17'1" x 14'10"	253 sq. ft	Yes

Home data report

8109 Winterwood Trail, Roanoke, Roanoke County, Virginia,
United States, 24018

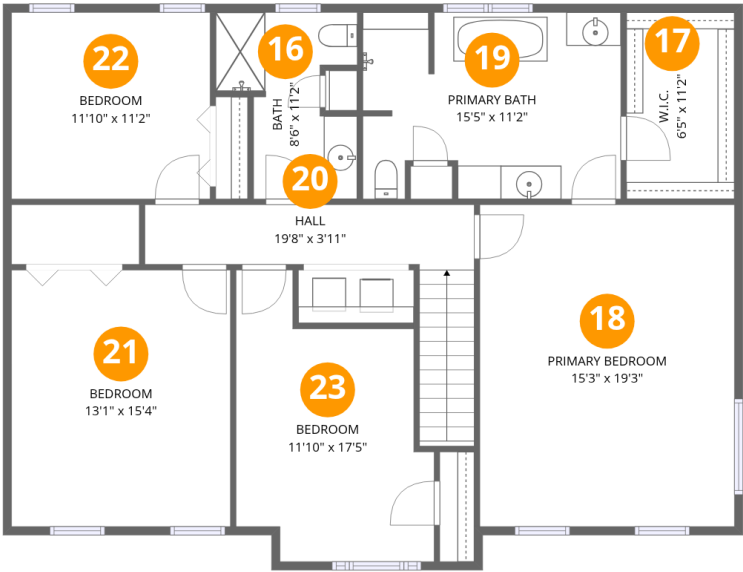


Room dimensions

Floor 2 Total:1385sqft Excluded: 921sqft

#		Dimensions	sqft	Counted as living area
6	Breakfast Nook	12'4" x 15'1"	185 sq. ft	Yes
7	Foyer	12'9" x 5'11"	75 sq. ft	Yes
8	Garage	23'9" x 25'6"	605 sq. ft	No
9	Dining Room	14'6" x 15'4"	223 sq. ft	Yes
10	Deck	26'1" x 12'0"	313 sq. ft	No
11	Kitchen	15'4" x 19'0"	292 sq. ft	Yes
12	Bedroom	15'3" x 15'4"	233 sq. ft	Yes
13	Hall	4'11" x 11'6"	56 sq. ft	Yes
14	Living Room	15'7" x 15'0"	234 sq. ft	Yes
15	Bath	3'11" x 8'9"	34 sq. ft	Yes

8109 Winterwood Trail, Roanoke, Roanoke County, Virginia,
United States, 24018



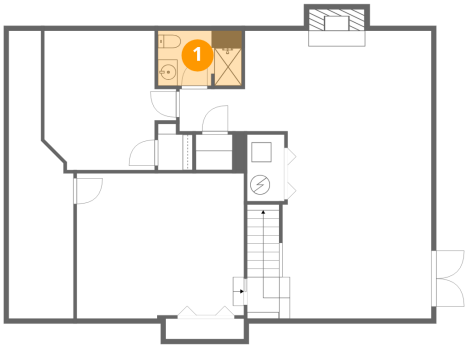
Room dimensions

Floor 3 Total:1351sqft Excluded: 0sqft

#		Dimensions	sqft	Counted as living area
16	Bath	8'6" x 11'2"	94 sq. ft	Yes
17	W.I.C.	6'5" x 11'2"	72 sq. ft	Yes
18	Primary Bedroom	15'3" x 19'3"	293 sq. ft	Yes
19	Primary Bath	15'5" x 11'2"	172 sq. ft	Yes
20	Hall	19'8" x 3'11"	77 sq. ft	Yes
21	Bedroom	13'1" x 15'4"	200 sq. ft	Yes
22	Bedroom	11'10" x 11'2"	132 sq. ft	Yes
23	Bedroom	11'10" x 17'5"	206 sq. ft	Yes

8109 Winterwood Trail, Roanoke, Roanoke County, Virginia,
United States, 24018

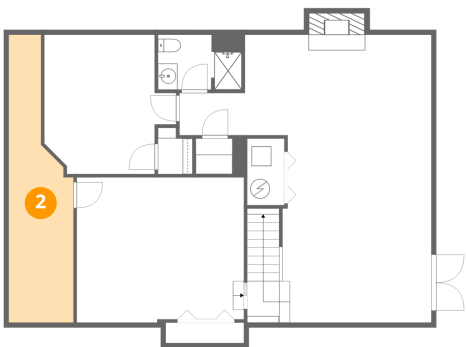
1 Floor 1 - Bath



Dimensions: 8'7" x 5'7"
Area: 48 sq. ft
Counted as living area: Yes

Heated: Yes
Finished: Yes
Enclosed: Yes
Contiguous: Yes
Permitted: Yes
Wet space: Yes
Addition: No
Conversion: No

2 Floor 1 - Storage

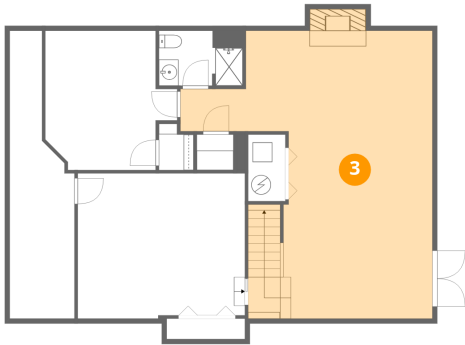


Dimensions: 6'7" x 29'5"
Area: 195 sq. ft
Counted as living area: No

Heated: No
Finished: No
Enclosed: No
Contiguous: Yes
Permitted: Yes
Wet space: No
Addition: No
Conversion: No

8109 Winterwood Trail, Roanoke, Roanoke County, Virginia,
United States, 24018

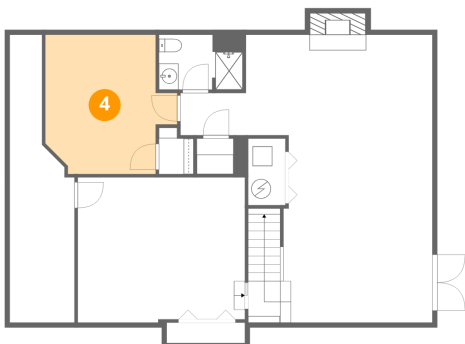
3 Floor 1 - Family Room



Dimensions: 25'9" x 29'5"
Area: 757 sq. ft
Counted as living area: Yes

Heated: Yes
Finished: Yes
Enclosed: Yes
Contiguous: Yes
Permitted: Yes
Wet space: No
Addition: No
Conversion: No

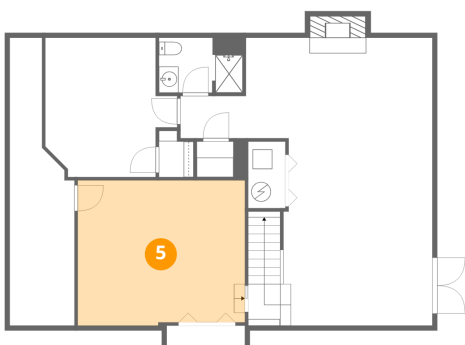
4 Floor 1 - Bonus Room



Dimensions: 13'6" x 14'3"
Area: 192 sq. ft
Counted as living area: Yes

Heated: Yes
Finished: Yes
Enclosed: Yes
Contiguous: Yes
Permitted: Yes
Wet space: No
Addition: No
Conversion: No

5 Floor 1 - Exercise Room

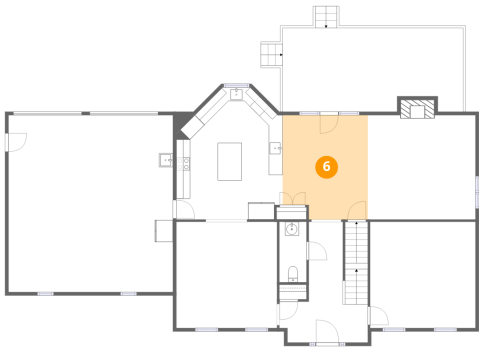


Dimensions: 17'1" x 14'10"
Area: 253 sq. ft
Counted as living area: Yes

Heated: Yes
Finished: Yes
Enclosed: Yes
Contiguous: Yes
Permitted: Yes
Wet space: No
Addition: No
Conversion: No

8109 Winterwood Trail, Roanoke, Roanoke County, Virginia,
United States, 24018

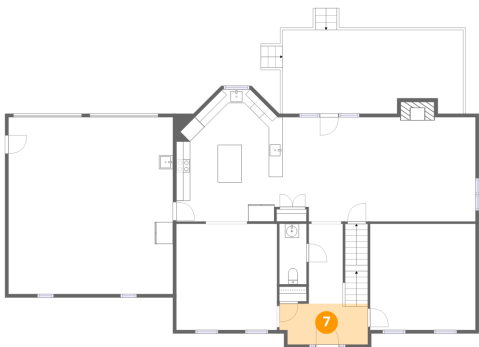
6 Floor 2 - Breakfast Nook



Dimensions: 12'4" x 15'1"
Area: 185 sq. ft
Counted as living area: Yes

Heated: Yes
Finished: Yes
Enclosed: Yes
Contiguous: Yes
Permitted: Yes
Wet space: No
Addition: No
Conversion: No

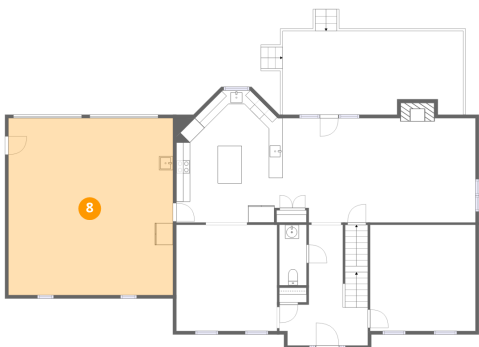
7 Floor 2 - Foyer



Dimensions: 12'9" x 5'11"
Area: 75 sq. ft
Counted as living area: Yes

Heated: Yes
Finished: Yes
Enclosed: Yes
Contiguous: Yes
Permitted: Yes
Wet space: No
Addition: No
Conversion: No

8 Floor 2 - Garage

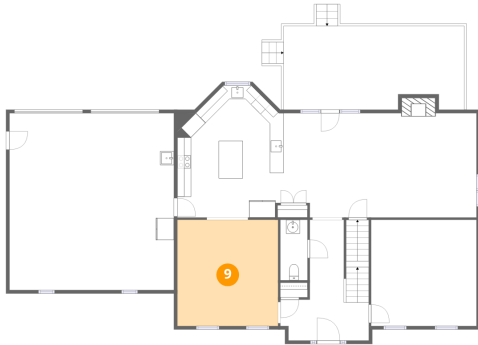


Dimensions: 23'9" x 25'6"
Area: 605 sq. ft
Counted as living area: No

Heated: No
Finished: No
Enclosed: Yes
Contiguous: Yes
Permitted: Yes
Wet space: No
Addition: No
Conversion: No

8109 Winterwood Trail, Roanoke, Roanoke County, Virginia,
United States, 24018

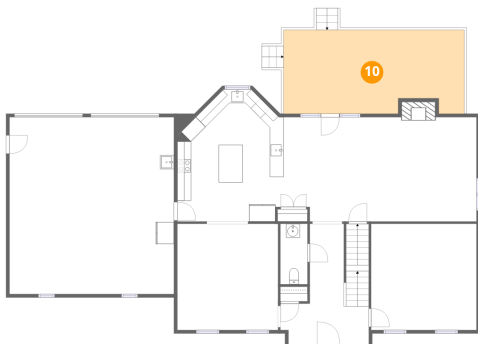
9 Floor 2 - Dining Room



Dimensions: 14'6" x 15'4"
Area: 223 sq. ft
Counted as living area: Yes

Heated: Yes
Finished: Yes
Enclosed: Yes
Contiguous: Yes
Permitted: Yes
Wet space: No
Addition: No
Conversion: No

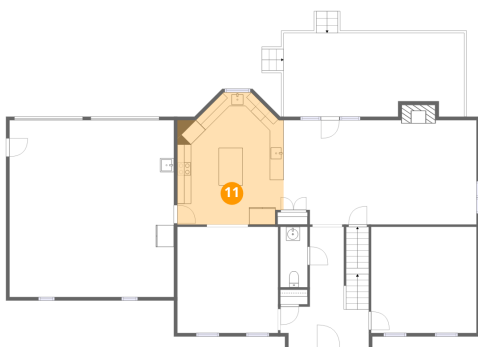
10 Floor 2 - Deck



Dimensions: 26'1" x 12'0"
Area: 313 sq. ft
Counted as living area: No

Heated: No
Finished: No
Enclosed: No
Contiguous: Yes
Permitted: Yes
Wet space: No
Addition: No
Conversion: No

11 Floor 2 - Kitchen

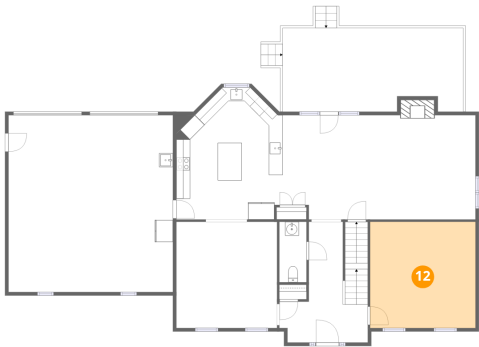


Dimensions: 15'4" x 19'0"
Area: 292 sq. ft
Counted as living area: Yes

Heated: Yes
Finished: Yes
Enclosed: Yes
Contiguous: Yes
Permitted: Yes
Wet space: No
Addition: No
Conversion: No

8109 Winterwood Trail, Roanoke, Roanoke County, Virginia,
United States, 24018

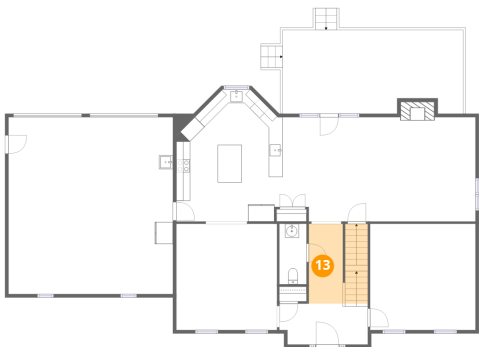
12 Floor 2 - Bedroom



Dimensions: 15'3" x 15'4"
Area: 233 sq. ft
Counted as living area: Yes

Heated: Yes
Finished: Yes
Enclosed: Yes
Contiguous: Yes
Permitted: Yes
Wet space: No
Addition: No
Conversion: No

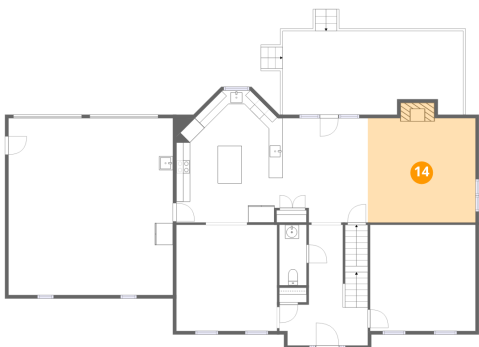
13 Floor 2 - Hall



Dimensions: 4'11" x 11'6"
Area: 56 sq. ft
Counted as living area: Yes

Heated: Yes
Finished: Yes
Enclosed: Yes
Contiguous: Yes
Permitted: Yes
Wet space: No
Addition: No
Conversion: No

14 Floor 2 - Living Room



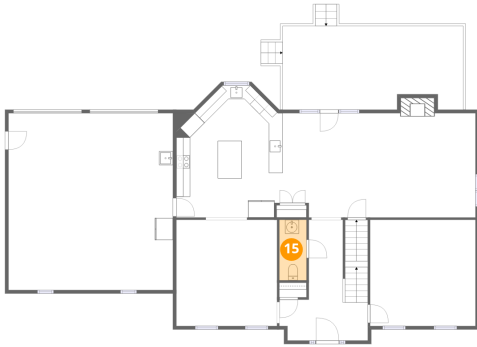
Dimensions: 15'7" x 15'0"
Area: 234 sq. ft
Counted as living area: Yes

Heated: Yes
Finished: Yes
Enclosed: Yes
Contiguous: Yes
Permitted: Yes
Wet space: No
Addition: No
Conversion: No

Home data report

8109 Winterwood Trail, Roanoke, Roanoke County, Virginia,
United States, 24018

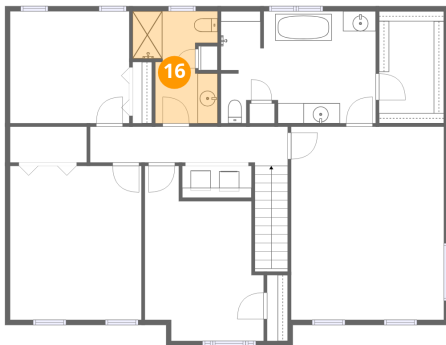
15 Floor 2 - Bath



Dimensions: 3'11" x 8'9"
Area: 34 sq. ft
Counted as living area: Yes

Heated: Yes
Finished: Yes
Enclosed: Yes
Contiguous: Yes
Permitted: Yes
Wet space: Yes
Addition: No
Conversion: No

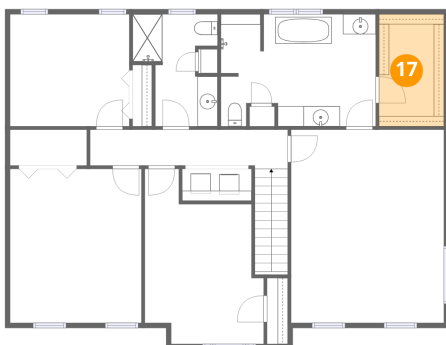
16 Floor 3 - Bath



Dimensions: 8'6" x 11'2"
Area: 94 sq. ft
Counted as living area: Yes

Heated: Yes
Finished: Yes
Enclosed: Yes
Contiguous: Yes
Permitted: Yes
Wet space: Yes
Addition: No
Conversion: No

17 Floor 3 - W.I.C.

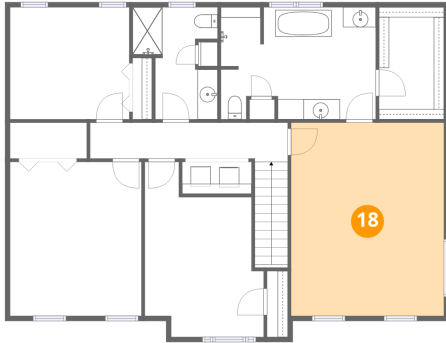


Dimensions: 6'5" x 11'2"
Area: 72 sq. ft
Counted as living area: Yes

Heated: Yes
Finished: Yes
Enclosed: Yes
Contiguous: Yes
Permitted: Yes
Wet space: No
Addition: No
Conversion: No

8109 Winterwood Trail, Roanoke, Roanoke County, Virginia,
United States, 24018

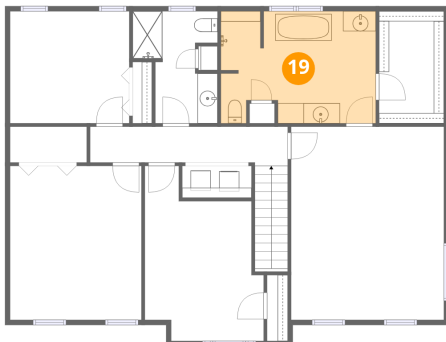
18 Floor 3 - Primary Bedroom



Dimensions: 15'3" x 19'3"
Area: 293 sq. ft
Counted as living area: Yes

Heated: Yes
Finished: Yes
Enclosed: Yes
Contiguous: Yes
Permitted: Yes
Wet space: No
Addition: No
Conversion: No

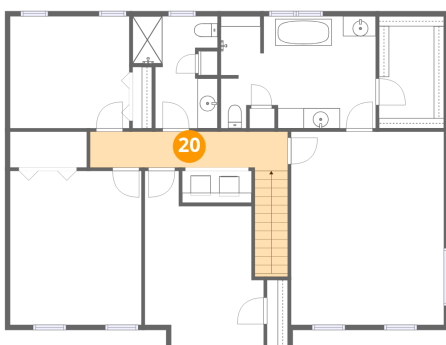
19 Floor 3 - Primary Bath



Dimensions: 15'5" x 11'2"
Area: 172 sq. ft
Counted as living area: Yes

Heated: Yes
Finished: Yes
Enclosed: Yes
Contiguous: Yes
Permitted: Yes
Wet space: Yes
Addition: No
Conversion: No

20 Floor 3 - Hall

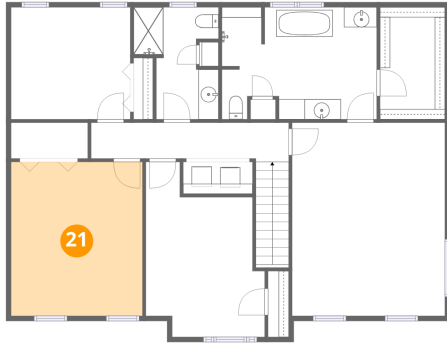


Dimensions: 19'8" x 3'11"
Area: 77 sq. ft
Counted as living area: Yes

Heated: Yes
Finished: Yes
Enclosed: Yes
Contiguous: Yes
Permitted: Yes
Wet space: No
Addition: No
Conversion: No

8109 Winterwood Trail, Roanoke, Roanoke County, Virginia,
United States, 24018

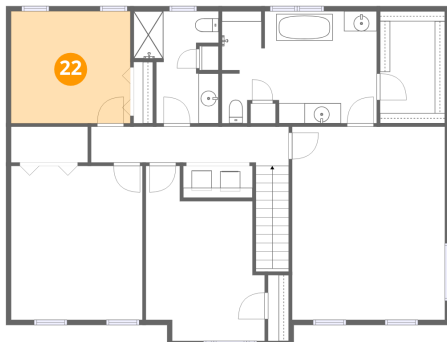
21 Floor 3 - Bedroom



Dimensions: 13'1" x 15'4"
Area: 200 sq. ft
Counted as living area: Yes

Heated: Yes
Finished: Yes
Enclosed: Yes
Contiguous: Yes
Permitted: Yes
Wet space: No
Addition: No
Conversion: No

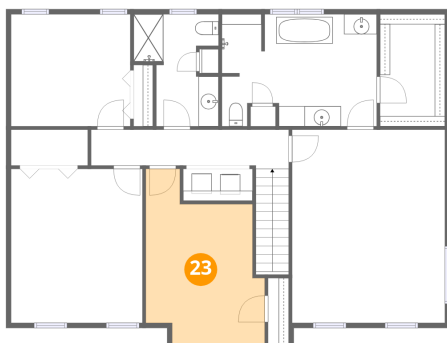
22 Floor 3 - Bedroom



Dimensions: 11'10" x 11'2"
Area: 132 sq. ft
Counted as living area: Yes

Heated: Yes
Finished: Yes
Enclosed: Yes
Contiguous: Yes
Permitted: Yes
Wet space: No
Addition: No
Conversion: No

23 Floor 3 - Bedroom



Dimensions: 11'10" x 17'5"
Area: 206 sq. ft
Counted as living area: Yes

Heated: Yes
Finished: Yes
Enclosed: Yes
Contiguous: Yes
Permitted: Yes
Wet space: No
Addition: No
Conversion: No