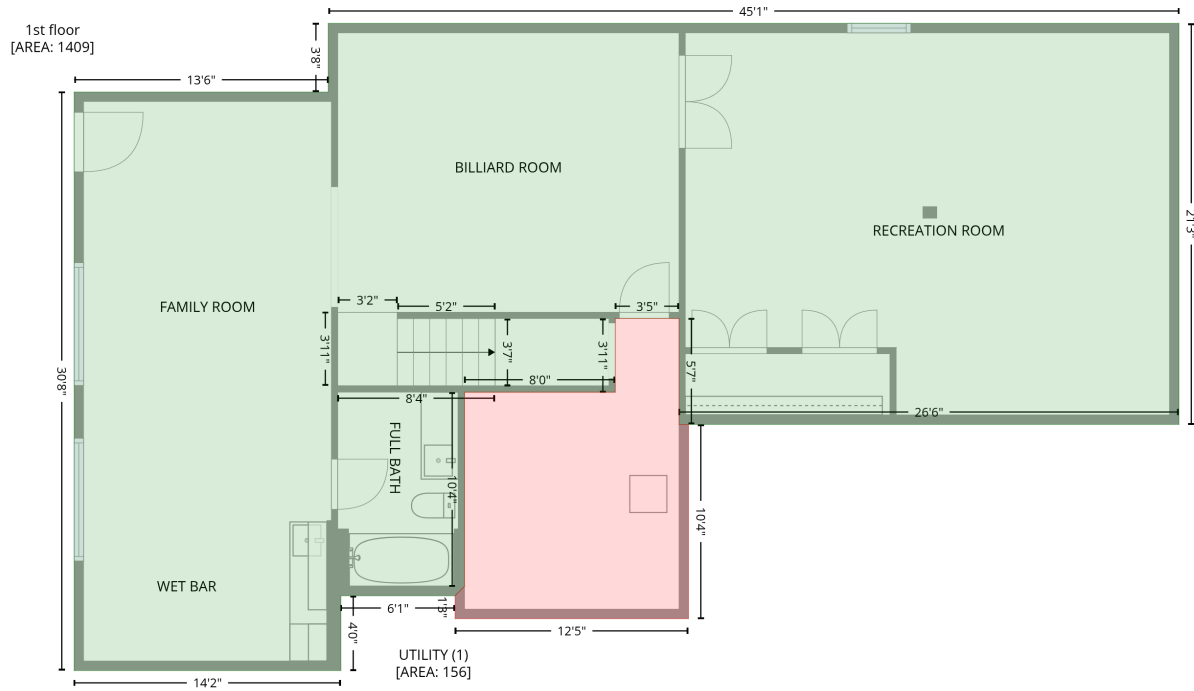


115 Orchard Farm Ln, Mooresville, NC, US

Gross Living Area: 4399 sq. ft

Level 1

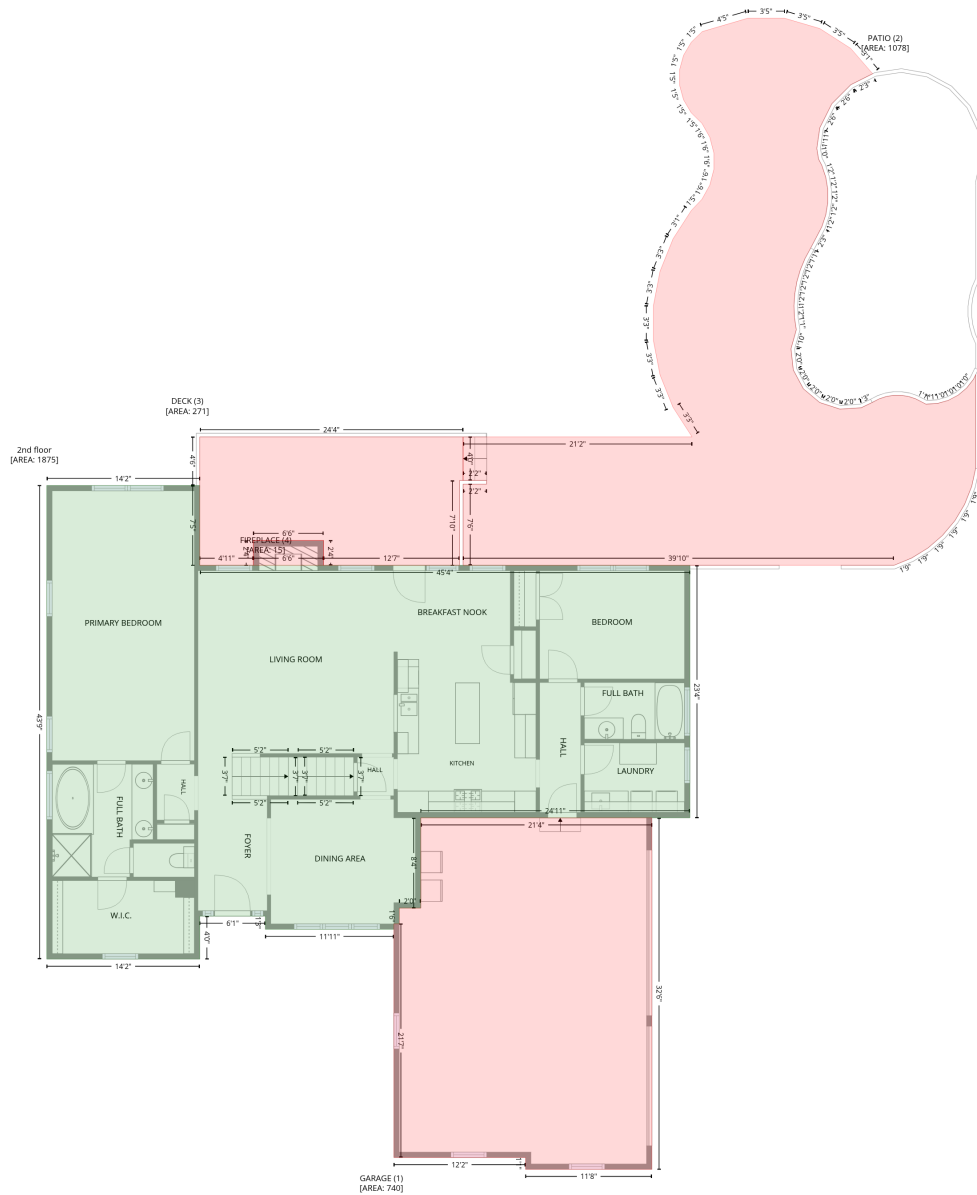


Space	Area (sq. ft)	Calculation <small>Coordinate Polygon Area Algorithm using inches</small>
1st floor (Living area)	1409	$-((807.8 + 807.8) * (748.3 - 1003.5) + (807.8 + 489.6) * (1003.5 - 1003.5) + (489.6 + 489.6) * (1003.5 - 936.2) + (489.6 + 449) * (936.2 - 936.2) + (449 + 449) * (936.2 - 983) + (449 + 353.1) * (983 - 983) + (353.1 + 353.1) * (983 - 1106.6) + (353.1 + 347.1) * (1106.6 - 1112.6) + (347.1 + 274.4) * (1112.6 - 1112.6) + (274.4 + 274.4) * (1112.6 - 1160.2) + (274.4 + 104.6) * (1160.2 - 1160.2) + (104.6 + 104.6) * (1160.2 - 792) + (104.6 + 266.4) * (792 - 792) + (266.4 + 266.4) * (792 - 748.3) + (266.4 + 807.8) * (748.3 - 748.3)) * 0.5 * 0.00694$
UTILITY (Non-living area)	156	$-((489.6 + 489.6) * (936.2 - 1003.5) + (489.6 + 495.6) * (1003.5 - 1003.5) + (495.6 + 495.6) * (1003.5 - 1127.2) + (495.6 + 347.1) * (1127.2 - 1127.2) + (347.1 + 347.1) * (1127.2 - 1112.6) + (347.1 + 353.1) * (1112.6 - 1106.6) + (353.1 + 353.1) * (1106.6 - 983) + (353.1 + 449) * (983 - 983) + (449 + 449) * (983 - 936.2) + (449 + 489.6) * (936.2 - 936.2)) * 0.5 * 0.00694$

115 Orchard Farm Ln, Mooresville, NC, US

Gross Living Area: 4399 sq. ft

Level 2



Space	Area (sq. ft)	Calculation
2nd floor (Living area)	1875	Coordinate Polygon Area Algorithm using inches $-((274.4 + 274.4) * (634.9 - 723.5) + (274.4 + 818.1) * (723.5 - 723.5) + (818.1 + 818.1) * (723.5 - 1003.5) + (818.1 + 519.5) * (1003.5 - 1003.5) + (519.5 + 519.5) * (1003.5 - 1103.7) + (519.5 + 495.6) * (1103.7 - 1103.7) + (495.6 + 495.6) * (1103.7 - 1121.2) + (495.6 + 489.6) * (1121.2 - 1121.2) + (489.6 + 489.6) * (1121.2 - 1127.2) + (489.6 + 347.1) * (1127.2 - 1127.2) + (347.1 + 347.1) * (1127.2 - 1112.6) + (347.1 + 274.4) * (1112.6 - 1112.6) + (274.4 + 274.4) * (1112.6 - 1160.2) + (274.4 + 104.6) * (1160.2 - 1160.2) + (104.6 + 104.6) * (1160.2 - 634.9) + (104.6 + 274.4) * (634.9 - 634.9)) * 0.5 * 0.00694$

115 Orchard Farm Ln, Mooresville, NC, US

Gross Living Area: 4399 sq. ft

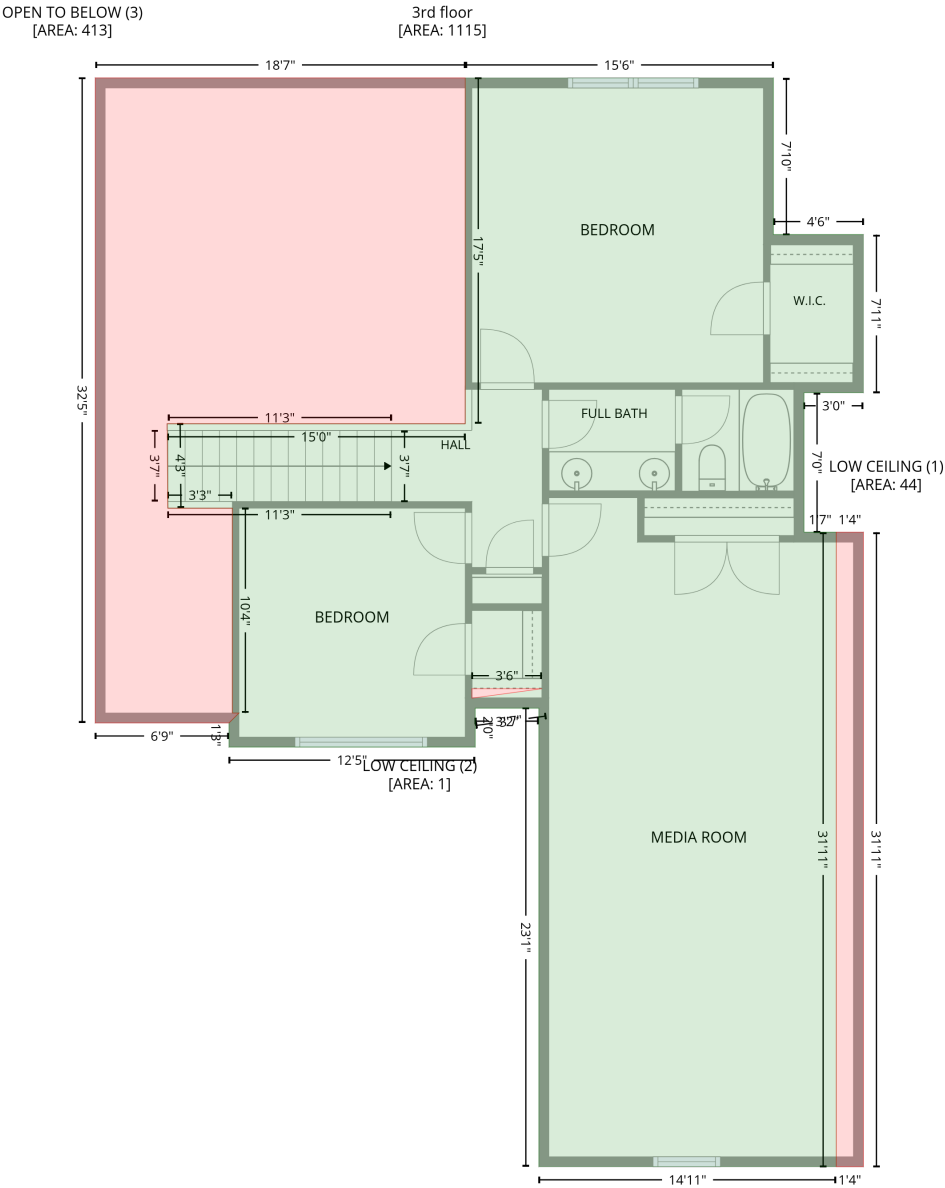
Level 2

Space	Area (sq. ft)	Calculation <small>Coordinate Polygon Area Algorithm using inches</small>
GARAGE (Non-living area)	740	$-(775.9 + 775.9) * (1003.5 - 1393.4) + (775.9 + 635.8) * (1393.4 - 1393.4) + (635.8 + 635.8) * (1393.4 - 1380.3) + (635.8 + 489.6) * (1380.3 - 1380.3) + (489.6 + 489.6) * (1380.3 - 1121.2) + (489.6 + 495.6) * (1121.2 - 1121.2) + (495.6 + 495.6) * (1121.2 - 1103.7) + (495.6 + 519.5) * (1103.7 - 1103.7) + (519.5 + 519.5) * (1103.7 - 1003.5) + (519.5 + 775.9) * (1003.5 - 1003.5) * 0.5 * 0.00694$
PATIO (Non-living area)	1078	$-(923.1 + 962.2) * (116.8 - 128.2) + (962.2 + 996.5) * (128.2 - 150.3) + (996.5 + 1020.9) * (150.3 - 178.3) + (1020.9 + 996.6) * (178.3 - 190.5) + (996.6 + 975.5) * (190.5 - 211.6) + (975.5 + 962.2) * (211.6 - 238.3) + (962.2 + 958.9) * (238.3 - 261.1) + (958.9 + 960.8) * (261.1 - 273.1) + (960.8 + 964.4) * (273.1 - 279.9) + (964.4 + 968.8) * (279.9 - 293.2) + (968.8 + 971.1) * (293.2 - 307) + (971.1 + 971.1) * (307 - 321) + (971.1 + 968.8) * (321 - 334.8) + (968.8 + 964.4) * (334.8 - 348.1) + (964.4 + 952) * (348.1 - 371.7) + (952 + 945.7) * (371.7 - 383.3) + (945.7 + 940.6) * (383.3 - 395.8) + (940.6 + 936.8) * (395.8 - 408.8) + (936.8 + 934.4) * (408.8 - 422.1) + (934.4 + 933.5) * (422.1 - 435.7) + (933.5 + 934.1) * (435.7 - 449.2) + (934.1 + 936.1) * (449.2 - 462.2) + (936.1 + 930.2) * (462.2 - 483.4) + (930.2 + 932.8) * (483.4 - 506.9) + (932.8 + 943.9) * (506.9 - 527.7) + (943.9 + 962) * (527.7 - 542.9) + (962 + 984.5) * (542.9 - 550.3) + (984.5 + 1008.1) * (550.3 - 548.8) + (1008.1 + 1021.2) * (548.8 - 542.5) + (1021.2 + 1027.8) * (542.5 - 539) + (1027.8 + 1035.8) * (539 - 536.3) + (1035.8 + 1044.1) * (536.3 - 535) + (1044.1 + 1052.6) * (535 - 535) + (1052.6 + 1060.9) * (535 - 536.3) + (1060.9 + 1068.6) * (536.3 - 538.9) + (1068.6 + 1079.9) * (538.9 - 544.8) + (1079.9 + 1092.9) * (544.8 - 543.9) + (1092.9 + 1104.8) * (543.9 - 540.6) + (1104.8 + 1115.7) * (540.6 - 534.8) + (1115.7 + 1125.1) * (534.8 - 526.9) + (1125.1 + 1132.7) * (526.9 - 517.2) + (1132.7 + 1135.2) * (517.2 - 511.8) + (1135.2 + 1135.2) * (511.8 - 615.4) + (1135.2 + 1130.7) * (615.4 - 636.1) + (1130.7 + 1122.8) * (636.1 - 655.9) + (1122.8 + 1111.9) * (655.9 - 674.1) + (1111.9 + 1098.3) * (674.1 - 690.4) + (1098.3 + 1082.2) * (690.4 - 704.3) + (1082.2 + 1064.1) * (704.3 - 715.4) + (1064.1 + 1044.4) * (715.4 - 723.5) + (1044.4 + 566.5) * (723.5 - 723.5) + (566.5 + 566.5) * (723.5 - 633.4) + (566.5 + 592.5) * (633.4 - 633.4) + (592.5 + 592.5) * (633.4 - 629.4) + (592.5 + 566.5) * (629.4 - 629.4) + (566.5 + 566.5) * (629.4 - 581.1) + (566.5 + 820.5) * (581.1 - 581.1) + (820.5 + 799.5) * (581.1 - 548.4) + (799.5 + 785) * (548.4 - 512.4) + (785 + 777.6) * (512.4 - 474.3) + (777.6 + 777.6) * (474.3 - 435.5) + (777.6 + 785) * (435.5 - 397.3) + (785 + 799.5) * (397.3 - 361.3) + (799.5 + 819.7) * (361.3 - 329.9) + (819.7 + 831.5) * (329.9 - 317.5) + (831.5 + 840.2) * (317.5 - 301.8) + (840.2 + 844.7) * (301.8 - 284.3) + (844.7 + 844.7) * (284.3 - 266.3) + (844.7 + 840.2) * (266.3 - 248.8) + (840.2 + 831.5) * (248.8 - 233.5) + (831.5 + 819.6) * (233.5 - 221.7) + (819.6 + 811) * (221.7 - 207.2) + (811 + 806.6) * (207.2 - 191) + (806.6 + 806.6) * (191 - 174.1) + (806.6 + 811) * (174.1 - 157.9) + (811 + 819.6) * (157.9 - 143.4) + (819.6 + 831.7) * (143.4 - 131.6) + (831.7 + 882.3) * (131.6 - 116.8) + (882.3 + 923.1) * (116.8 - 116.8) * 0.5 * 0.00694$
DECK (Non-living area)	271	$-(566.5 + 566.5) * (581.1 - 629.4) + (566.5 + 562.5) * (629.4 - 629.4) + (562.5 + 562.5) * (629.4 - 723.5) + (562.5 + 411.8) * (723.5 - 723.5) + (411.8 + 411.8) * (723.5 - 696) + (411.8 + 333.7) * (696 - 696) + (333.7 + 333.7) * (696 - 723.5) + (333.7 + 274.4) * (723.5 - 723.5) + (274.4 + 274.4) * (723.5 - 634.9) + (274.4 + 274.3) * (634.9 - 581.1) + (274.3 + 566.5) * (581.1 - 581.1) * 0.5 * 0.00694$
FIREPLACE (Non-living area)	15	$-(411.8 + 411.8) * (696 - 723.5) + (411.8 + 333.7) * (723.5 - 723.5) + (333.7 + 333.7) * (723.5 - 696) + (333.7 + 411.8) * (696 - 696) * 0.5 * 0.00694$

115 Orchard Farm Ln, Mooresville, NC, US

Gross Living Area: 4399 sq. ft

Level 3



115 Orchard Farm Ln, Mooresville, NC, US

Gross Living Area: 4399 sq. ft

Level 3

Space	Area (sq. ft)	Calculation <small>Coordinate Polygon Area Algorithm using inches</small>
3rd floor (Living area)	1115	$-\left((675.5 + 675.5) * (723.5 - 818) + (675.5 + 729.9) * (818 - 818) + (729.9 + 729.9) * (818 - 913.4) + (729.9 + 694) * (913.4 - 913.4) + (694 + 694) * (913.4 - 997.5) + (694 + 713.5) * (997.5 - 997.5) + (713.5 + 713.5) * (997.5 - 1380.3) + (713.5 + 534.1) * (1380.3 - 1380.3) + (534.1 + 534.1) * (1380.3 - 1103.7) + (534.1 + 495.6) * (1103.7 - 1103.7) + (495.6 + 495.6) * (1103.7 - 1127.2) + (495.6 + 347.1) * (1127.2 - 1127.2) + (347.1 + 347.1) * (1127.2 - 1112.6) + (347.1 + 353.1) * (1112.6 - 1106.6) + (353.1 + 349.1) * (1106.6 - 1106.6) + (349.1 + 349.1) * (1106.6 - 983) + (349.1 + 310.2) * (983 - 983) + (310.2 + 309.7) * (983 - 932.1) + (309.7 + 489.6) * (932.1 - 932.1) + (489.6 + 489.6) * (932.1 - 723.5) + (489.6 + 675.5) * (723.5 - 723.5)\right) * 0.5 * 0.00694 + -\left((536 + 493.6) * (1092 - 1092) + (493.6 + 493.6) * (1092 - 1097.7) + (493.6 + 536) * (1097.7 - 1092)\right) * 0.5 * 0.00694$
LOW CEILING (Non-living area)	44	$-\left((729.9 + 729.9) * (997.5 - 1380.3) + (729.9 + 713.5) * (1380.3 - 1380.3) + (713.5 + 713.5) * (1380.3 - 997.5) + (713.5 + 729.9) * (997.5 - 997.5)\right) * 0.5 * 0.00694$
LOW CEILING (Non-living area)	1	$-\left((536 + 494) * (1092 - 1097.6) + (494 + 493.6) * (1097.6 - 1097.6) + (493.6 + 493.6) * (1097.6 - 1092) + (493.6 + 536) * (1092 - 1092)\right) * 0.5 * 0.00694$
OPEN TO BELOW (Non-living area)	413	$-\left((489.6 + 489.6) * (723.5 - 932.1) + (489.6 + 309.7) * (932.1 - 932.1) + (309.7 + 310.2) * (932.1 - 983) + (310.2 + 349.1) * (983 - 983) + (349.1 + 349.1) * (983 - 1106.6) + (349.1 + 353.1) * (1106.6 - 1106.6) + (353.1 + 347.1) * (1106.6 - 1112.6) + (347.1 + 266.4) * (1112.6 - 1112.6) + (266.4 + 266.4) * (1112.6 - 723.5) + (266.4 + 489.6) * (723.5 - 723.5)\right) * 0.5 * 0.00694$