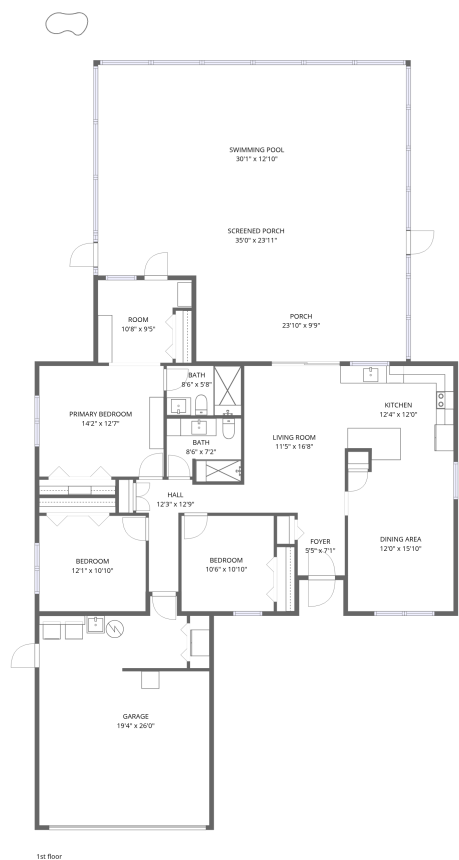


Home data report

2634 Concorde Court, Clubhouse Estates, Clearwater, Pinellas County, Florida, United States, 33761




Total Area: 1395 sq. ft

1st Floor: 1395 sq. ft


Excluded: Screened porch 455 sq. ft, Porch 232 sq. ft, Garage 448 sq. ft, Walls: 179 sq. ft

Property summary

 **1** Floors

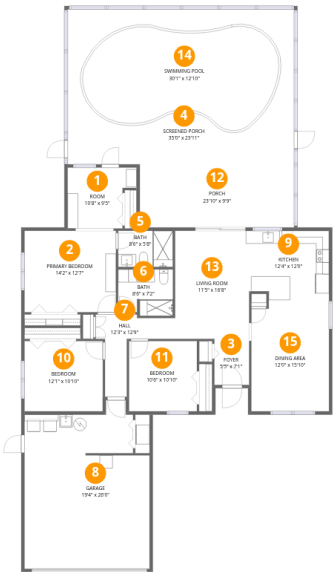
 **3** Bedrooms

 **2** Bathrooms

 **1** Garages

Home data report

2634 Concorde Court, Clubhouse Estates, Clearwater, Pinellas County, Florida, United States, 33761



Room dimensions

Floor 1

Total:1395sqft

Excluded: 1135sqft

#		Dimensions	sqft	Counted as living area
1	Room	10'8" x 9'5"	87 sq. ft	Yes
2	Primary Bedroom	14'2" x 12'7"	178 sq. ft	Yes
3	Foyer	5'5" x 7'1"	38 sq. ft	Yes
4	Screened Porch	35'0" x 23'11"	838 sq. ft	No
5	Bath	8'6" x 5'8"	48 sq. ft	Yes
6	Bath	8'6" x 7'2"	58 sq. ft	Yes
7	Hall	12'3" x 12'9"	73 sq. ft	Yes
8	Garage	19'4" x 26'0"	448 sq. ft	No
9	Kitchen	12'4" x 12'0"	140 sq. ft	Yes
10	Bedroom	12'1" x 10'10"	131 sq. ft	Yes
11	Bedroom	10'6" x 10'10"	114 sq. ft	Yes

Home data report

2634 Concorde Court, Clubhouse Estates, Clearwater, Pinellas County, Florida, United States, 33761

#		Dimensions	sqft	Counted as living area
12	Porch	23'10" x 9'9"	232 sq. ft	No
13	Living Room	11'5" x 16'8"	191 sq. ft	Yes
14	Swimming Pool	30'1" x 12'10"	383 sq. ft	No
15	Dining Area	12'0" x 15'10"	190 sq. ft	Yes

1 Floor 1 - Room



Dimensions: 10'8" x 9'5"
Area: 87 sq. ft
Counted as living area: Yes

Heated: Yes
Finished: Yes
Enclosed: Yes
Contiguous: Yes
Permitted: Yes
Wet space: No
Addition: No
Conversion: No

2 Floor 1 - Primary Bedroom



Dimensions: 14'2" x 12'7"
Area: 178 sq. ft
Counted as living area: Yes

Heated: Yes
Finished: Yes
Enclosed: Yes
Contiguous: Yes
Permitted: Yes
Wet space: No
Addition: No
Conversion: No

3 Floor 1 - Foyer



Dimensions: 5'5" x 7'1"
Area: 38 sq. ft
Counted as living area: Yes

Heated: Yes
Finished: Yes
Enclosed: Yes
Contiguous: Yes
Permitted: Yes
Wet space: No
Addition: No
Conversion: No

4 Floor 1 - Screened Porch



Dimensions: 35'0" x 23'11"
Area: 838 sq. ft
Counted as living area: No

Heated: No
Finished: No
Enclosed: No
Contiguous: Yes
Permitted: Yes
Wet space: No
Addition: No
Conversion: No

5 Floor 1 - Bath



Dimensions: 8'6" x 5'8"
Area: 48 sq. ft
Counted as living area: Yes

Heated: Yes
Finished: Yes
Enclosed: Yes
Contiguous: Yes
Permitted: Yes
Wet space: Yes
Addition: No
Conversion: No

6 Floor 1 - Bath



Dimensions: 8'6" x 7'2"
Area: 58 sq. ft
Counted as living area: Yes

Heated: Yes
Finished: Yes
Enclosed: Yes
Contiguous: Yes
Permitted: Yes
Wet space: Yes
Addition: No
Conversion: No

7 Floor 1 - Hall



Dimensions: 12'3" x 12'9"
Area: 73 sq. ft
Counted as living area: Yes

Heated: Yes
Finished: Yes
Enclosed: Yes
Contiguous: Yes
Permitted: Yes
Wet space: No
Addition: No
Conversion: No

8 Floor 1 - Garage



Dimensions: 19'4" x 26'0"
Area: 448 sq. ft
Counted as living area: No

Heated: No
Finished: No
Enclosed: Yes
Contiguous: Yes
Permitted: Yes
Wet space: No
Addition: No
Conversion: No

9 Floor 1 - Kitchen



Dimensions: 12'4" x 12'0"
Area: 140 sq. ft
Counted as living area: Yes

Heated: Yes
Finished: Yes
Enclosed: Yes
Contiguous: Yes
Permitted: Yes
Wet space: No
Addition: No
Conversion: No

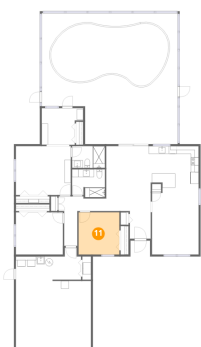
10 Floor 1 - Bedroom



Dimensions: 12'1" x 10'10"
Area: 131 sq. ft
Counted as living area: Yes

Heated: Yes
Finished: Yes
Enclosed: Yes
Contiguous: Yes
Permitted: Yes
Wet space: No
Addition: No
Conversion: No

11 Floor 1 - Bedroom



Dimensions: 10'6" x 10'10"
Area: 114 sq. ft
Counted as living area: Yes

Heated: Yes
Finished: Yes
Enclosed: Yes
Contiguous: Yes
Permitted: Yes
Wet space: No
Addition: No
Conversion: No

2634 Concorde Court, Clubhouse Estates, Clearwater, Pinellas
County, Florida, United States, 33761

12 Floor 1 - Porch



Dimensions: 23'10" x 9'9"
Area: 232 sq. ft
Counted as living area: No

Heated: No
Finished: No
Enclosed: No
Contiguous: Yes
Permitted: Yes
Wet space: No
Addition: No
Conversion: No

13 Floor 1 - Living Room



Dimensions: 11'5" x 16'8"
Area: 191 sq. ft
Counted as living area: Yes

Heated: Yes
Finished: Yes
Enclosed: Yes
Contiguous: Yes
Permitted: Yes
Wet space: No
Addition: No
Conversion: No

14 Floor 1 - Swimming Pool



Dimensions: 30'1" x 12'10"
Area: 383 sq. ft
Counted as living area: No

Heated: No
Finished: No
Enclosed: No
Contiguous: Yes
Permitted: No
Wet space: No
Addition: No
Conversion: No

2634 Concorde Court, Clubhouse Estates, Clearwater, Pinellas
County, Florida, United States, 33761

15 Floor 1 - Dining Area



Dimensions: 12'0" x 15'10"
Area: 190 sq. ft
Counted as living area: Yes

Heated: Yes
Finished: Yes
Enclosed: Yes
Contiguous: Yes
Permitted: Yes
Wet space: No
Addition: No
Conversion: No