

Home data report

2310 Green Knoll Lane, Muse, Vinton, Roanoke County, Virginia,
United States, 24179



Total Area: 2088 sq. ft

1st Floor: 1281 sq. ft, 2nd Floor: 807 sq. ft

Excluded: Garage 445 sq. ft, Porch 129 sq. ft, Patio 322 sq. ft, Covered patio 187 sq. ft,
Open to below 325 sq. ft, Walls: 202 sq. ft

Property summary



Home data report

**2310 Green Knoll Lane, Muse, Vinton, Roanoke County, Virginia,
United States, 24179**



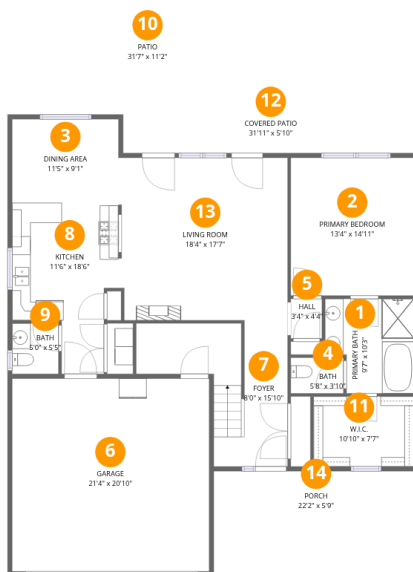
1
Half baths



1
Garages

Home data report

2310 Green Knoll Lane, Muse, Vinton, Roanoke County, Virginia, United States, 24179



Room dimensions

Floor 1

Total:1281sqft

Excluded: 1083sqft

#		Dimensions	sqft	Counted as living area
1	Primary Bath	9'7" x 10'3"	98 sq. ft	Yes
2	Primary Bedroom	13'4" x 14'11"	198 sq. ft	Yes
3	Dining Area	11'5" x 9'1"	104 sq. ft	Yes
4	Bath	5'8" x 3'10"	22 sq. ft	Yes
5	Hall	3'4" x 4'4"	14 sq. ft	Yes
6	Garage	21'4" x 20'10"	445 sq. ft	No
7	Foyer	8'0" x 15'10"	126 sq. ft	Yes
8	Kitchen	11'6" x 18'6"	213 sq. ft	Yes
9	Bath	5'0" x 5'5"	27 sq. ft	Yes
10	Patio	31'7" x 11'2"	353 sq. ft	No
11	W.I.C.	10'10" x 7'7"	82 sq. ft	Yes

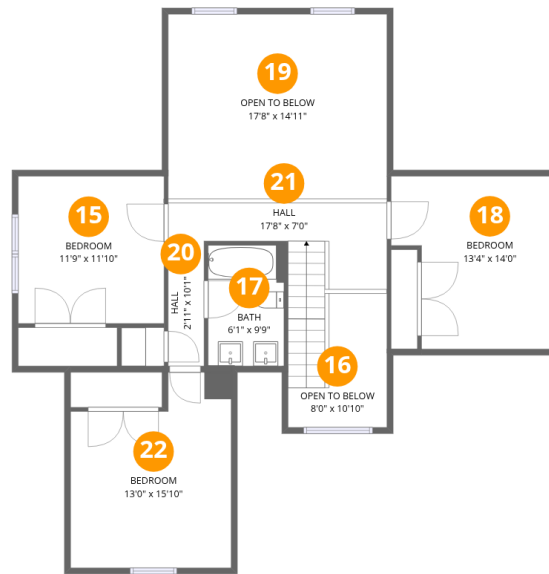
Home data report

**2310 Green Knoll Lane, Muse, Vinton, Roanoke County, Virginia,
United States, 24179**

#		Dimensions	sqft	Counted as living area
12	Covered Patio	31'11" x 5'10"	185 sq. ft	No
13	Living Room	18'4" x 17'7"	322 sq. ft	Yes
14	Porch	22'2" x 5'9"	128 sq. ft	No

Home data report

2310 Green Knoll Lane, Muse, Vinton, Roanoke County, Virginia,
United States, 24179



Room dimensions

Floor 2

Total:807sqft

Excluded: 325sqft

#		Dimensions	sqft	Counted as living area
15	Bedroom	11'9" x 11'10"	140 sq. ft	Yes
16	Open To Below	8'0" x 10'10"	87 sq. ft	No
17	Bath	6'1" x 9'9"	60 sq. ft	Yes
18	Bedroom	13'4" x 14'0"	186 sq. ft	Yes
19	Open To Below	17'8" x 14'11"	263 sq. ft	No
20	Hall	2'11" x 10'1"	29 sq. ft	Yes
21	Hall	17'8" x 7'0"	124 sq. ft	Yes
22	Bedroom	13'0" x 15'10"	205 sq. ft	Yes

1 Floor 1 - Primary Bath



Dimensions: 9'7" x 10'3"
Area: 98 sq. ft
Counted as living area: Yes

Heated: Yes
Finished: Yes
Enclosed: Yes
Contiguous: Yes
Permitted: Yes
Wet space: Yes
Addition: No
Conversion: No

2 Floor 1 - Primary Bedroom



Dimensions: 13'4" x 14'11"
Area: 198 sq. ft
Counted as living area: Yes

Heated: Yes
Finished: Yes
Enclosed: Yes
Contiguous: Yes
Permitted: Yes
Wet space: No
Addition: No
Conversion: No

3 Floor 1 - Dining Area



Dimensions: 11'5" x 9'1"
Area: 104 sq. ft
Counted as living area: Yes

Heated: Yes
Finished: Yes
Enclosed: Yes
Contiguous: Yes
Permitted: Yes
Wet space: No
Addition: No
Conversion: No

4 Floor 1 - Bath



Dimensions: 5'8" x 3'10"
Area: 22 sq. ft
Counted as living area: Yes

Heated: Yes
Finished: Yes
Enclosed: Yes
Contiguous: Yes
Permitted: Yes
Wet space: Yes
Addition: No
Conversion: No

5 Floor 1 - Hall



Dimensions: 3'4" x 4'4"
Area: 14 sq. ft
Counted as living area: Yes

Heated: Yes
Finished: Yes
Enclosed: Yes
Contiguous: Yes
Permitted: Yes
Wet space: No
Addition: No
Conversion: No

6 Floor 1 - Garage



Dimensions: 21'4" x 20'10"

Area: 445 sq. ft

Counted as living area: No

Heated: No

Finished: No

Enclosed: Yes

Contiguous: Yes

Permitted: Yes

Wet space: No

Addition: No

Conversion: No

7 Floor 1 - Foyer



Dimensions: 8'0" x 15'10"

Area: 126 sq. ft

Counted as living area: Yes

Heated: Yes

Finished: Yes

Enclosed: Yes

Contiguous: Yes

Permitted: Yes

Wet space: No

Addition: No

Conversion: No

8 Floor 1 - Kitchen



Dimensions: 11'6" x 18'6"

Area: 213 sq. ft

Counted as living area: Yes

Heated: Yes

Finished: Yes

Enclosed: Yes

Contiguous: Yes

Permitted: Yes

Wet space: No

Addition: No

Conversion: No

9 Floor 1 - Bath



Dimensions: 5'0" x 5'5"
Area: 27 sq. ft
Counted as living area: Yes

Heated: Yes
Finished: Yes
Enclosed: Yes
Contiguous: Yes
Permitted: Yes
Wet space: Yes
Addition: No
Conversion: No

10 Floor 1 - Patio



Dimensions: 31'7" x 11'2"
Area: 353 sq. ft
Counted as living area: No

Heated: No
Finished: No
Enclosed: No
Contiguous: Yes
Permitted: Yes
Wet space: No
Addition: No
Conversion: No

11 Floor 1 - W.I.C.



Dimensions: 10'10" x 7'7"
Area: 82 sq. ft
Counted as living area: Yes

Heated: Yes
Finished: Yes
Enclosed: Yes
Contiguous: Yes
Permitted: Yes
Wet space: No
Addition: No
Conversion: No

12 Floor 1 - Covered Patio



Dimensions: 31'11" x 5'10"
Area: 185 sq. ft
Counted as living area: No

Heated: No
Finished: No
Enclosed: No
Contiguous: Yes
Permitted: Yes
Wet space: No
Addition: No
Conversion: No

13 Floor 1 - Living Room



Dimensions: 18'4" x 17'7"
Area: 322 sq. ft
Counted as living area: Yes

Heated: Yes
Finished: Yes
Enclosed: Yes
Contiguous: Yes
Permitted: Yes
Wet space: No
Addition: No
Conversion: No

14 Floor 1 - Porch



Dimensions: 22'2" x 5'9"
Area: 128 sq. ft
Counted as living area: No

Heated: No
Finished: No
Enclosed: No
Contiguous: Yes
Permitted: Yes
Wet space: No
Addition: No
Conversion: No

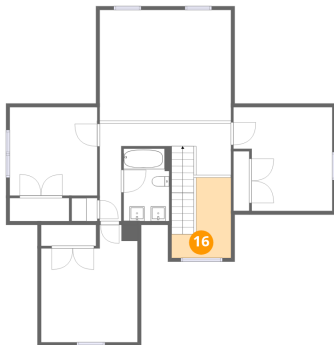
15 Floor 2 - Bedroom



Dimensions: 11'9" x 11'10"
Area: 140 sq. ft
Counted as living area: Yes

Heated: Yes
Finished: Yes
Enclosed: Yes
Contiguous: Yes
Permitted: Yes
Wet space: No
Addition: No
Conversion: No

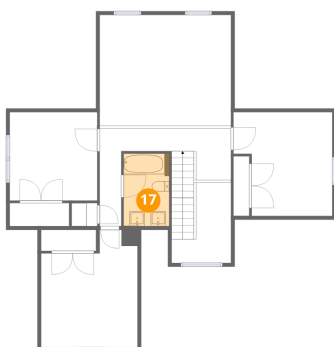
16 Floor 2 - Open To Below



Dimensions: 8'0" x 10'10"
Area: 87 sq. ft
Counted as living area: No

Heated: No
Finished: No
Enclosed: No
Contiguous: Yes
Permitted: No
Wet space: No
Addition: No
Conversion: No

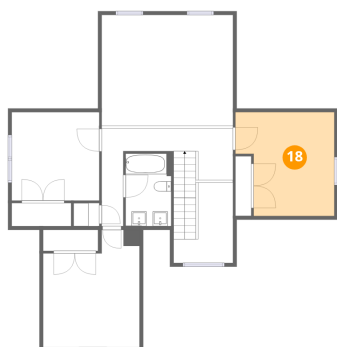
17 Floor 2 - Bath



Dimensions: 6'1" x 9'9"
Area: 60 sq. ft
Counted as living area: Yes

Heated: Yes
Finished: Yes
Enclosed: Yes
Contiguous: Yes
Permitted: Yes
Wet space: Yes
Addition: No
Conversion: No

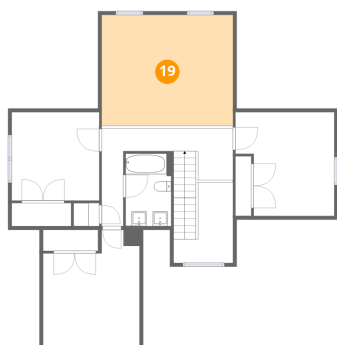
18 Floor 2 - Bedroom



Dimensions: 13'4" x 14'0"
Area: 186 sq. ft
Counted as living area: Yes

Heated: Yes
Finished: Yes
Enclosed: Yes
Contiguous: Yes
Permitted: Yes
Wet space: No
Addition: No
Conversion: No

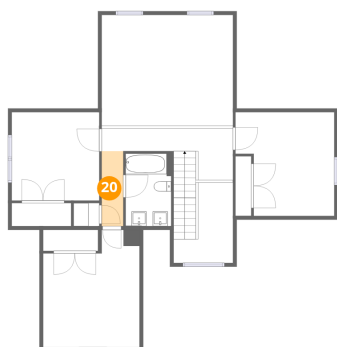
19 Floor 2 - Open To Below



Dimensions: 17'8" x 14'11"
Area: 263 sq. ft
Counted as living area: No

Heated: No
Finished: No
Enclosed: No
Contiguous: Yes
Permitted: No
Wet space: No
Addition: No
Conversion: No

20 Floor 2 - Hall

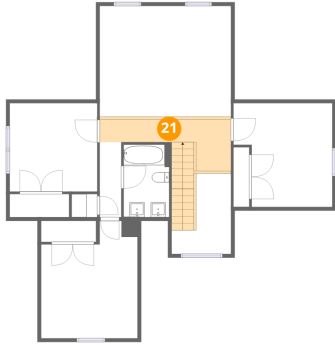


Dimensions: 2'11" x 10'1"
Area: 29 sq. ft
Counted as living area: Yes

Heated: Yes
Finished: Yes
Enclosed: Yes
Contiguous: Yes
Permitted: Yes
Wet space: No
Addition: No
Conversion: No

2310 Green Knoll Lane, Muse, Vinton, Roanoke County, Virginia,
United States, 24179

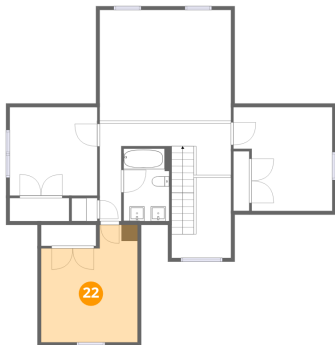
21 Floor 2 - Hall



Dimensions: 17'8" x 7'0"
Area: 124 sq. ft
Counted as living area: Yes

Heated: Yes
Finished: Yes
Enclosed: Yes
Contiguous: Yes
Permitted: Yes
Wet space: No
Addition: No
Conversion: No

22 Floor 2 - Bedroom



Dimensions: 13'0" x 15'10"
Area: 205 sq. ft
Counted as living area: Yes

Heated: Yes
Finished: Yes
Enclosed: Yes
Contiguous: Yes
Permitted: Yes
Wet space: No
Addition: No
Conversion: No