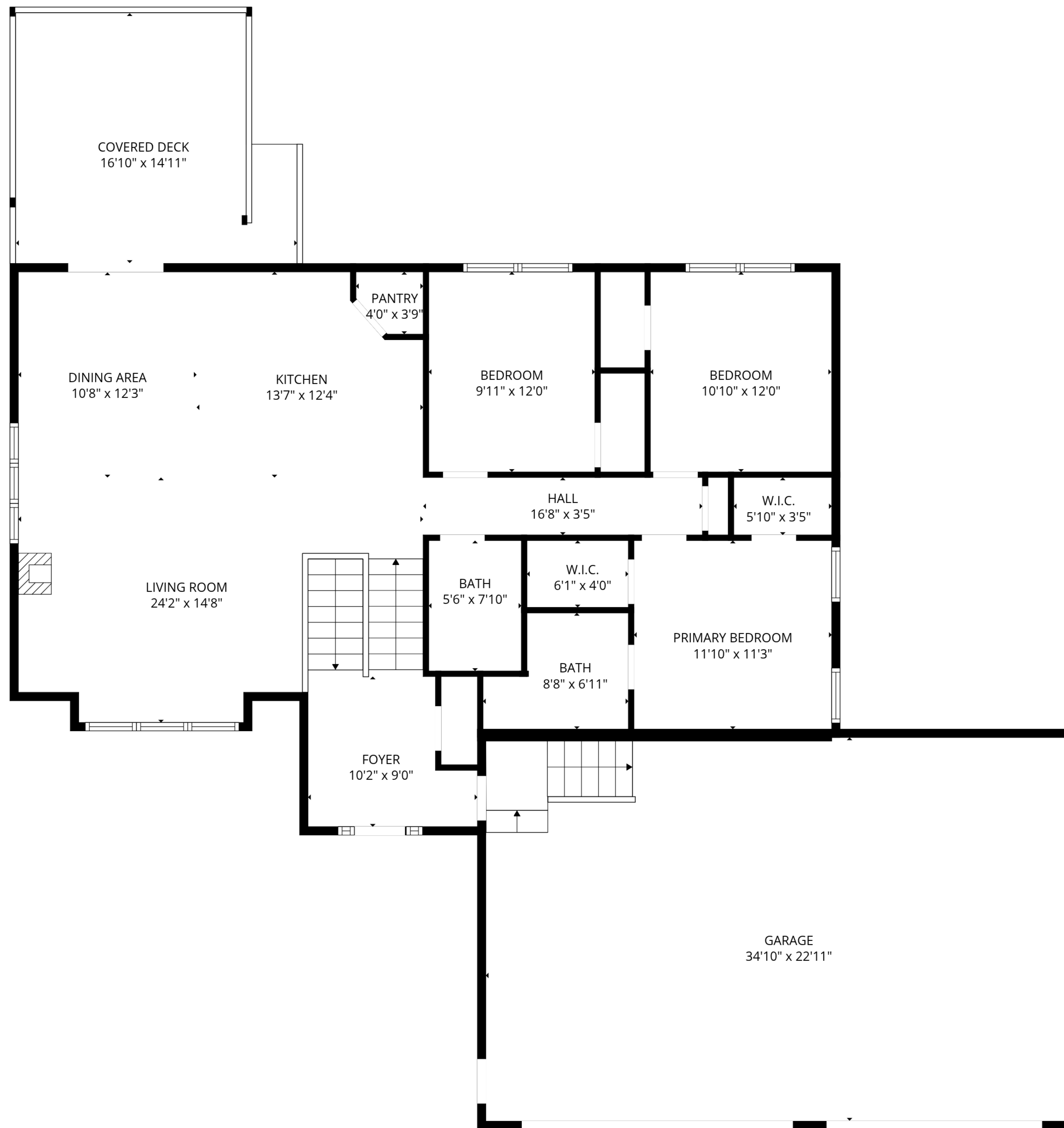


TOTAL: 2632 sq. ft

Basement: 1203 sq. ft, 1st floor: 1369 sq. ft, 2nd floor: 60 sq. ft
 EXCLUDED AREAS: UTILITY: 90 sq. ft, COVERED DECK: 570 sq. ft, GARAGE: 800 sq. ft,
 ATTIC: 434 sq. ft, WALLS: 257 sq. ft

SIZES AND DIMENSIONS ARE APPROXIMATE, ACTUAL MAY VARY.



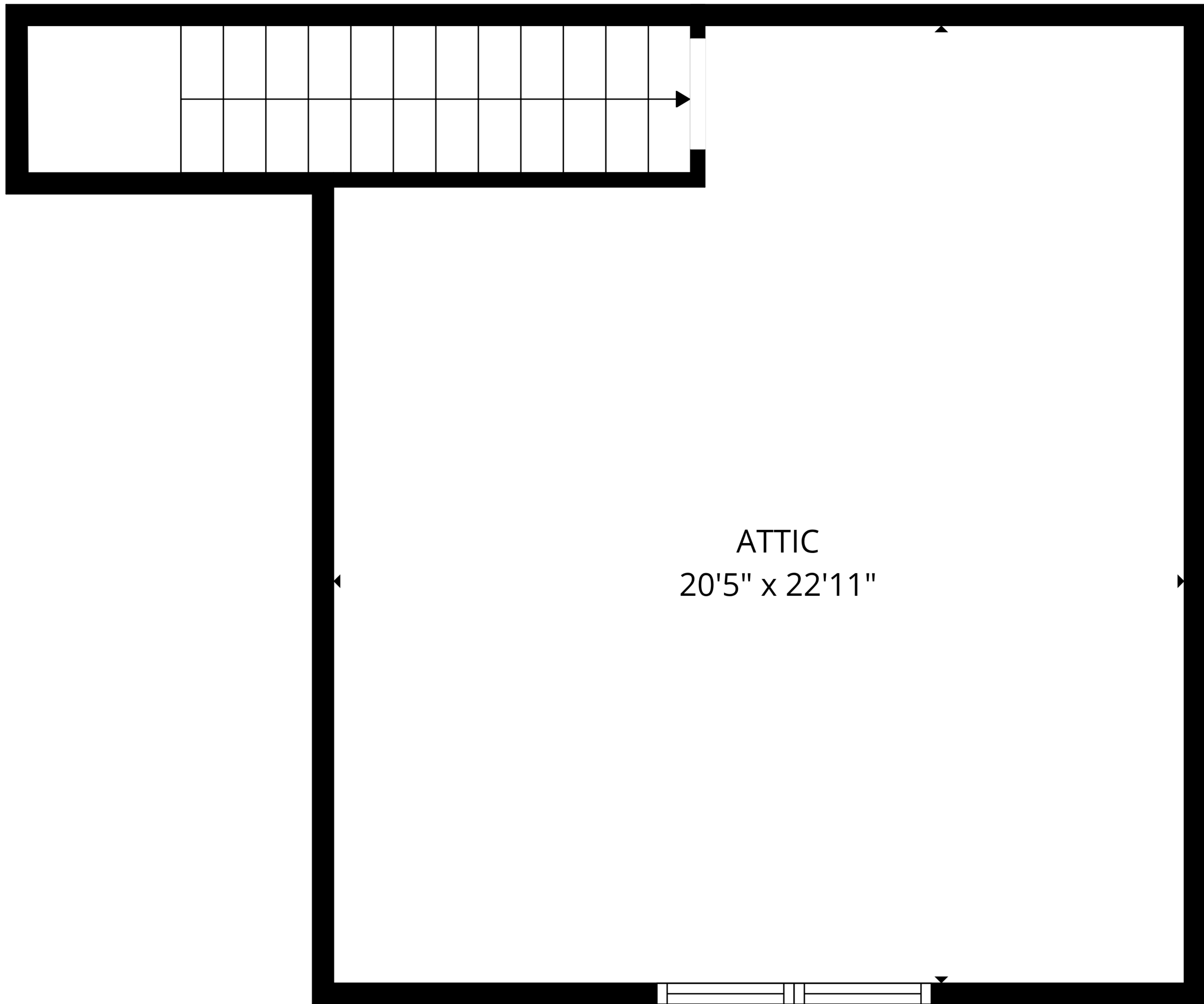
TOTAL: 2632 sq. ft

Basement: 1203 sq. ft, 1st floor: 1369 sq. ft, 2nd floor: 60 sq. ft

EXCLUDED AREAS: UTILITY: 90 sq. ft, COVERED DECK: 570 sq. ft, GARAGE: 800 sq. ft,

ATTIC: 434 sq. ft, WALLS: 257 sq. ft

SIZES AND DIMENSIONS ARE APPROXIMATE, ACTUAL MAY VARY.

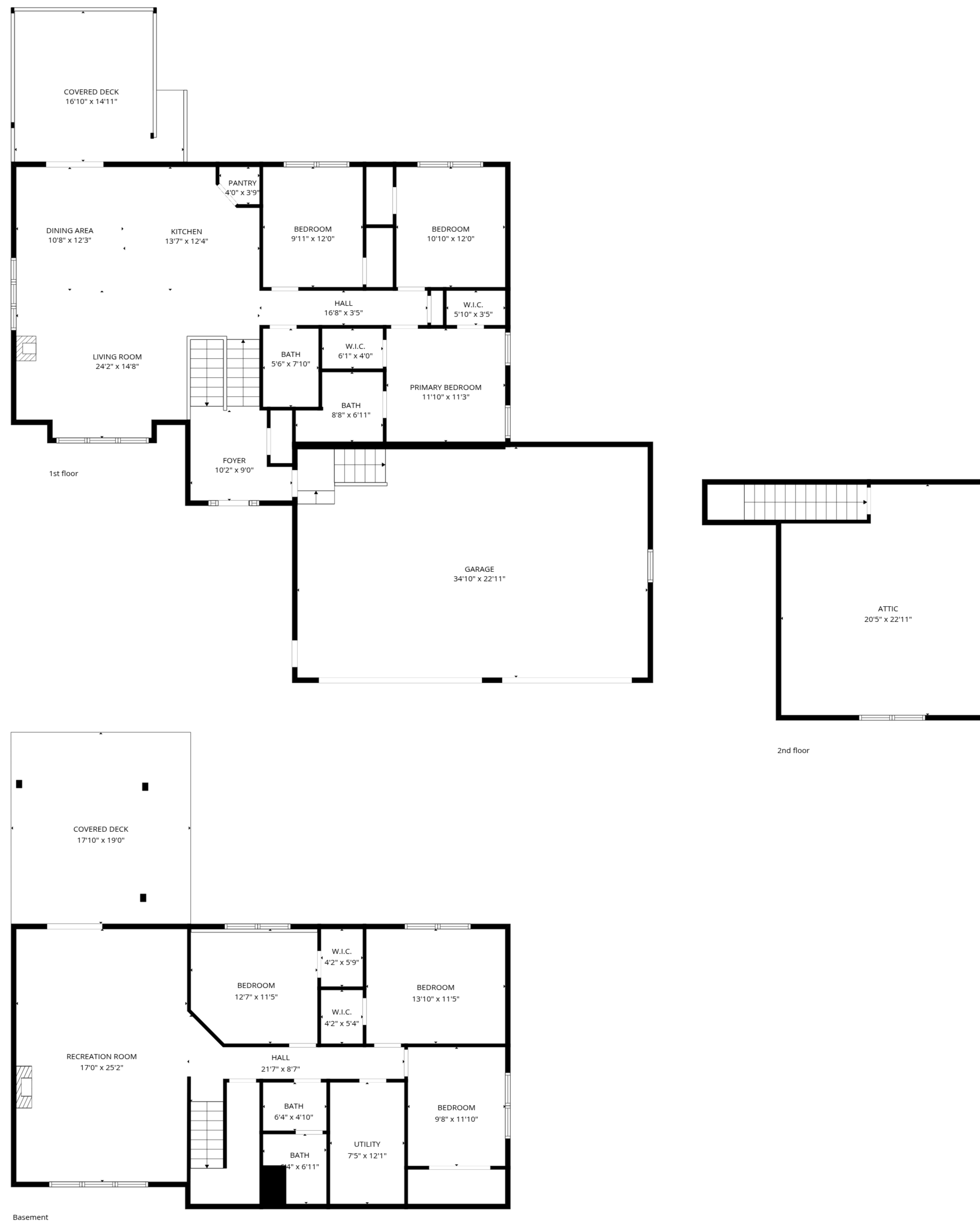


ATTIC
20'5" x 22'11"

TOTAL: 2632 sq. ft

Basement: 1203 sq. ft, 1st floor: 1369 sq. ft, 2nd floor: 60 sq. ft
EXCLUDED AREAS: UTILITY: 90 sq. ft, COVERED DECK: 570 sq. ft, GARAGE: 800 sq. ft,
ATTIC: 434 sq. ft, WALLS: 257 sq. ft

SIZES AND DIMENSIONS ARE APPROXIMATE, ACTUAL MAY VARY.



TOTAL: 2632 sq. ft

Basement: 1203 sq. ft, 1st floor: 1369 sq. ft, 2nd floor: 60 sq. ft

EXCLUDED AREAS: UTILITY: 90 sq. ft, COVERED DECK: 570 sq. ft, GARAGE: 800 sq. ft,

ATTIC: 434 sq. ft, WALLS: 257 sq. ft

SIZES AND DIMENSIONS ARE APPROXIMATE, ACTUAL MAY VARY.