



3411 NW THURMAN STREET



*Willamette Heights Craftsman by  
Architect Emil Schacht*

**The Dan Volkmer Team**  
Specializing in Historic & Architecturally Significant Homes

# A LANDMARK PORTLAND CRAFTSMAN IN THE DESIREABLE WILLAMETTE HEIGHTS NEIGHBORHOOD



A rare offering in the heart of Portland, this distinguished 1906 Craftsman residence, designed by celebrated architect Emil Schacht, is a home of exceptional provenance, warmth, and beauty.

Built in anticipation of the Lewis and Clark Exposition, the home stands as a remarkable example of Schacht's enduring legacy. One of Portland's most prolific and admired early architects, Schacht helped shape the city's architectural identity, and this residence remains a superb expression of his vision. Original period details have been beautifully preserved, including dramatic box beams, richly restored millwork, intricate wood detailing, a fireside settle, and the home's striking roof spire, all of which lend an extraordinary sense of history and craftsmanship. Numerous windows on all three floors frame sweeping views over the river to Mt. St. Helens and Mt. Rainier.

Located in the coveted Willamette Heights neighborhood, where the street ends in trails, and is enveloped by lush Forest Park on three sides.

The inviting covered front porch welcomes you home, graced by Wisteria, that evokes the charm of Southern porch living.



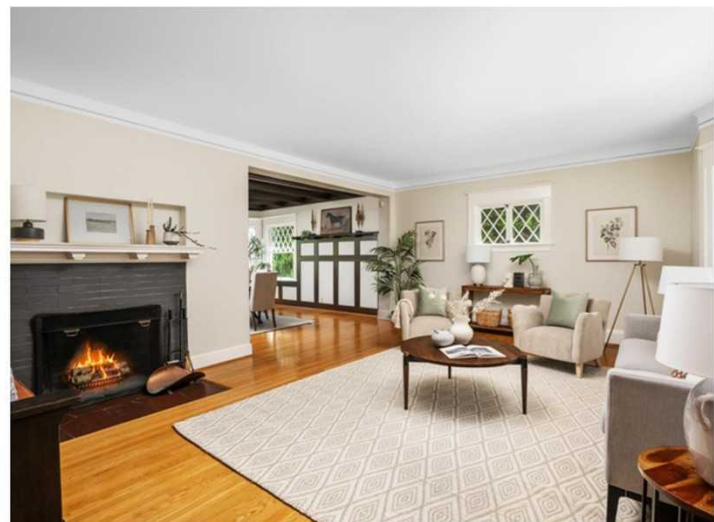


A secluded and enchanting garden sanctuary lies just beyond the front porch, enveloped in latticework and adorned by a glorious, long-established Concord grape vine. Wrapping around the deck on three sides, while providing leafy privacy as well as many pounds of succulent grapes. This sets the thematic tone for the garden, which features a diverse culinary collection, including five Yuzu citrus trees, Black Sambuca, blueberries, and various herbs. Additionally, vibrant flowers enhance the garden's allure, attracting a variety of pollinators. Imagine leisurely summer evenings, softly perfumed by the citrus blooms.





Upon entering, guests are welcomed by a spacious foyer that showcases the exceptional craftsmanship of over a century ago. This area boasts an array of architectural details, including elegantly trimmed diamond-pane and leaded-glass windows, as well as expansive doorways that foster a sense of connection and openness. Oak floors lead from room to room, and connect at a center hallway, resulting in the coveted circular floor plan.



There are some houses people just don't want to leave; 3411 NW Thurman is one. Over 120 years, only four families have had the privilege of living here — a testament to the home's timeless appeal and enduring livability. It has been a deeply cherished family home, filled with warmth, celebration, and memory. Abundant natural light pours into a three-sided bay with Schact-signature diamond pane windows. Freshly painted walls meet nine-foot ceilings adorned with picture-rail moldings.



An original bench is comfortably positioned beside the wood-burning fireplace, which features a beautifully adorned mantel supported by elegant brackets and designed with a recessed inset.



The formal dining room is open to the living room, resulting in a desirable great room aesthetic. Walls are lined with ornate millwork and plate-rail molding, which complements the expansive beamed ceiling. A door leads to the back deck, which overlooks the garden as well as Mt St Helens & Rainier.



A second set of doors leads directly into the kitchen, which has been meticulously renovated to accommodate modern living. The thoughtfully selected clear, vertical grain Douglas fir millwork beautifully complements the historic features of the home.



The breakfast bar offers a cozy spot to savor your morning coffee or to chat with the chef as they complete a meal. Beneath a row of windows, the sink provides a stunning view of Mount St. Helens and Mount Rainier. Furthermore, the combination of maple cabinetry, slab granite countertops, and stainless steel appliances are sure to delight chefs of all skill levels.



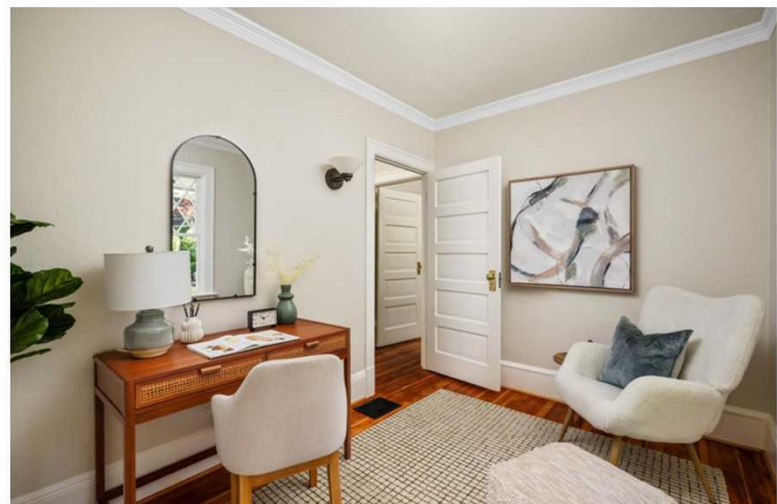


Beyond the kitchen lies a pass-through hallway featuring adjustable shelves. This space can also serve as a pantry, as a set of CVG louvered doors is available in the basement. Adjacent to this hallway is the main floor's half bath, which is perfect for guests to freshen up before a meal.



The historic charm of the home is elegantly highlighted by the original old-growth Douglas fir staircase, which is enhanced by a diamond-pane window and a leaded-glass window. This staircase, along with the fir flooring in all four bedrooms, was beautifully refinished in March 2026.

The second floor comprises four bedrooms and a bathroom, with several doorways featuring original transom windows. The first bedroom at the top of the stairs makes a perfect home office or study and receives southwest light.





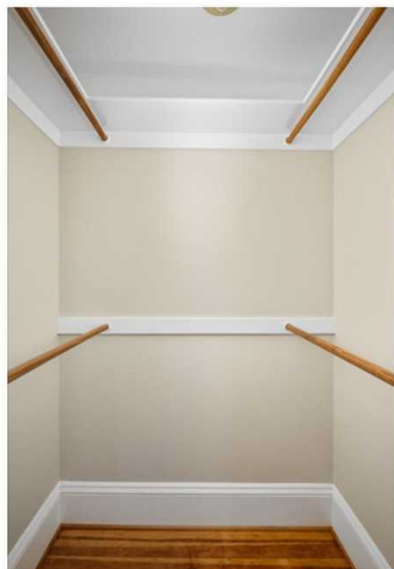
The second bedroom is generously sized, featuring four windows, including a three-window bay that highlights Schacht's diamond-pane design. A spacious closet complements the room, which benefits from abundant natural light streaming in from the southwest.

The dimensions of this room are 16 feet by 13 feet.





The primary bedroom is situated in the southeast corner of the home, making it the largest of the four bedrooms on this level, measuring 16 feet by 14 feet. The bay window provides a sweeping view to the east, showcasing glimpses of Mount St. Helens and Mount Rainier as well as the culinary garden below. Envision waking up with the double-hung windows open, while catching the soft fragrance of the Yuzu tree's blooms during May to June.



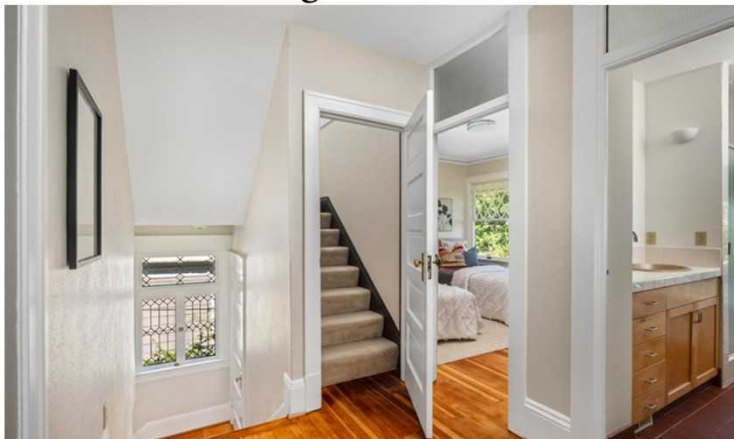


The full bathroom on this level underwent an extensive renovation during the major updates to the home, which included modernized plumbing and electrical systems. This bathroom boasts ample storage, a generously sized walk-in tiled shower, and a luxurious soaking tub equipped with a body sprayer. The tub is positioned within a bay window, offering a picturesque view of Mount St. Helens in the distance.

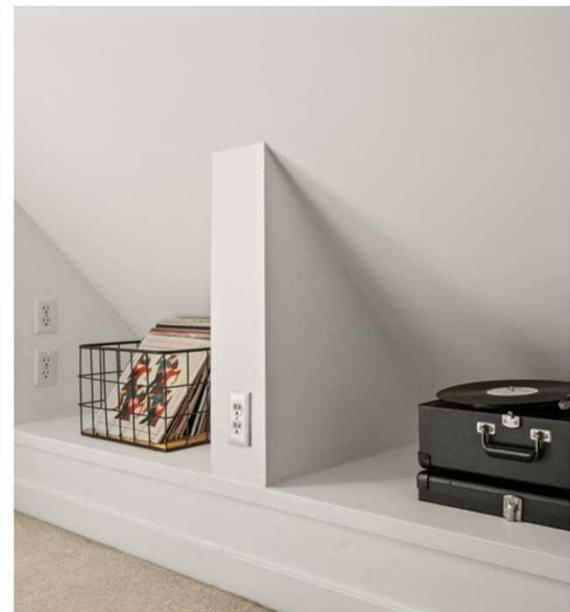


The fourth bedroom, for this level, measures 11' by 8' and has two double-hung windows, with the signature diamond pane upper sash, which has the most captivating Mt St Helens view as well as the lawn and mature blooming shrubs in the landscaped yard below.

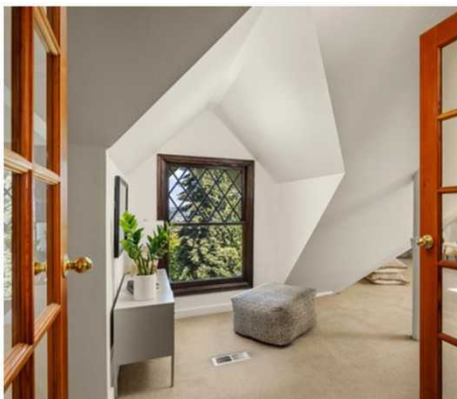
Rounding out the second floor is the staircase to the third floor.



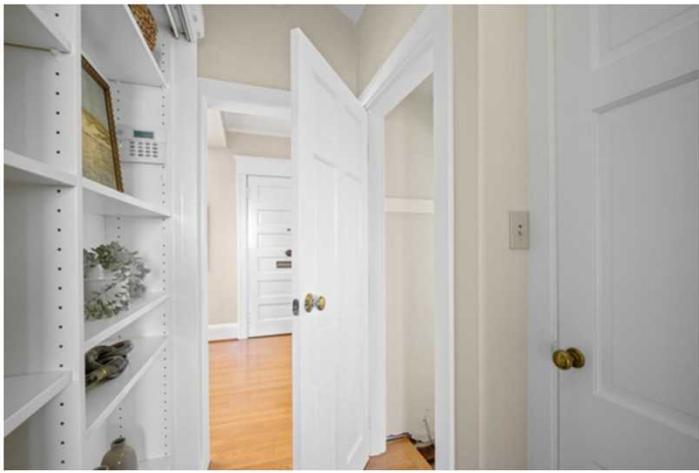
The third floor is a vaulted aerie with skylights and two rooms.



The primary space could be an ideal family room or media lounge. Nooks integrated into the eaves are thoughtfully designed and equipped with outlets for electrical components.



Accessed via a pair of elegant French doors, this versatile space is perfectly suited for use as a home office or play area. Additionally, the third floor offers extra storage in the eaves, making it an ideal location for seasonal décor or luggage.



The door to the basement is located off the main floor and is where the laundry hook-up is located. An exterior door leads to the side path around the house, resulting in convenient access for garden tools and equipment. The garden path leads to the back yard.



Lovingly nurtured over the years, the landscaped gardens create a private botanical retreat that is a rare find within the city. Among the most remarkable features are the five mature yuzu trees, exceptional and highly sought after. Continuing the theme of abundance is a magnificent 25-foot persimmon tree, and prolific blueberry bushes. Additionally, there is a rare bed of Appalachian ramps, a coveted wild garlic cherished by chefs and gardeners.



The front garden features several rare Yuzu Citrus trees, which are both exceptional and highly sought after. Thriving in Portland's climate, these prized Japanese citrus trees provide a sensory experience and a connection to culinary tradition. Their fragrant green fruit, harvested in late summer, yields exquisite zest, while the larger golden fruit of autumn produces aromatic juice that chefs around the world treasure for use in cocktails, seafood, poultry, and desserts.



Additionally, the garden boasts Black Sambucca Elderberry, shrub peonies, and an array of flourishing herbs, including oregano, rosemary, and lavender. The warm hues of Yellow Japanese Iris complement the ripening Yuzu fruit. A mature dogwood entices with soft pink and green blooms while the sidewalk is punctuated by cheerful California poppies. This garden also serves as a haven for pollinators, attracted by the vibrant colors and irresistible nectar.





Architect Emil Schacht is renowned for introducing the Arts and Crafts movement to Portland. His design of 3411 NW Thurman exemplifies his appreciation for symmetry, Tudor Revival influences, and distinctive rooflines, featuring prominently extended overhangs, exposed rafter tails, and decorative spires piercing dramatic gables. Furthermore, the substantial front porch, characterized by heavy timber framing, establishes the tone for the rich array of artistic millwork and Craftsman details throughout the structure.

This is more than a residence — it is an architectural heirloom, a garden sanctuary, and a home where generations of family life have flourished. A truly singular opportunity to own one of Portland's historic treasures.



## 3411 NW THURMAN STREET SPECIFICS AND DETAILS:

- Built 1906 - Designed by Renowned Architect Emil Schacht
- 4 Bedrooms + family room & home office/bonus room
- 1 Full and ½ bathrooms
- Total SF: 3,585 (Approx.) See floor plan below
- Unfinished basement ideal storage, or additional space for home gym, hobbies, or storing off-season gear or gardening tools with an exterior entrance
- 4,500 SF Lot (approx.) Professionally landscaped with established and mature culinary and cutting garden, plus back lawn, decks, and a covered porch, all connected via pathways
- Forced air gas furnace & Central A/C
- 2025 Taxes: \$15,090
- Served by Chapman, West Sylvan & Lincoln Schools
- MLS#221296561
- More photos & details on [www.DanVolkmer.com](http://www.DanVolkmer.com) and at [www.3411NWThurmanSt.com](http://www.3411NWThurmanSt.com)

## THE DAN VOLKMER TEAM

SPECIALIZING IN HISTORIC AND ARCHITECTURALLY SIGNIFICANT PROPERTIES



Left to Right: Dan Volkmer, Principal Broker, Fritz Benz, Kishra Ott, Kim Hayworth, Licensed Brokers of the Dan Volkmer Team

[Team@DanVolkmer.com](mailto:Team@DanVolkmer.com)

503.781.3366

[DanVolkmer.com](http://DanVolkmer.com)

# UPDATES AND IMPROVEMENTS - PER SELLERS:

2026:

- Interiors (walls, ceiling and trim) painted on main floor, second floor and third floor
- Refinished old-growth floors on 2<sup>nd</sup> floor and main staircase by CZ Becker Floors
- Front and back decks power washed and oiled
- Painted the front door

2024:

- Two new skylights were installed in the front room on 3<sup>rd</sup> floor

2022:

- Front and back decks oiled and treated.
- Enhanced landscaping with plantings

2021:

- Replaced kitchen stove

2020:

- Replaced forced-air gas furnace

2018:

- Replaced A/C condensor

2016:

- Replaced the roof
- Exterior paint
- Deck oiled and treated
- interior painting and
- Repiped/plumbed the house by local contractor Charlie Metcalf

2012:

- Remodeled upstairs bathroom to upgrade to a 6-foot tub and completely replaced the bay window
- New kitchen/dining deck/rebuild

2009:

- Drywalled a portion of the basement
- Added ceiling molding in the smallest second floor bedroom

2008:

- Refinished oak floors on main level

2007:

- 200 Amp panel upgrade
- 2006-2007:
- Exterior landscaping with professional garden design and ongoing work continued through 2010. During this time we moved two giant (volunteer) trees from the back edge of the property, bringing endless views from every floor of the house across the river to Mt St Helens, Mt Adams, and the mountains beyond.

2006-2007:

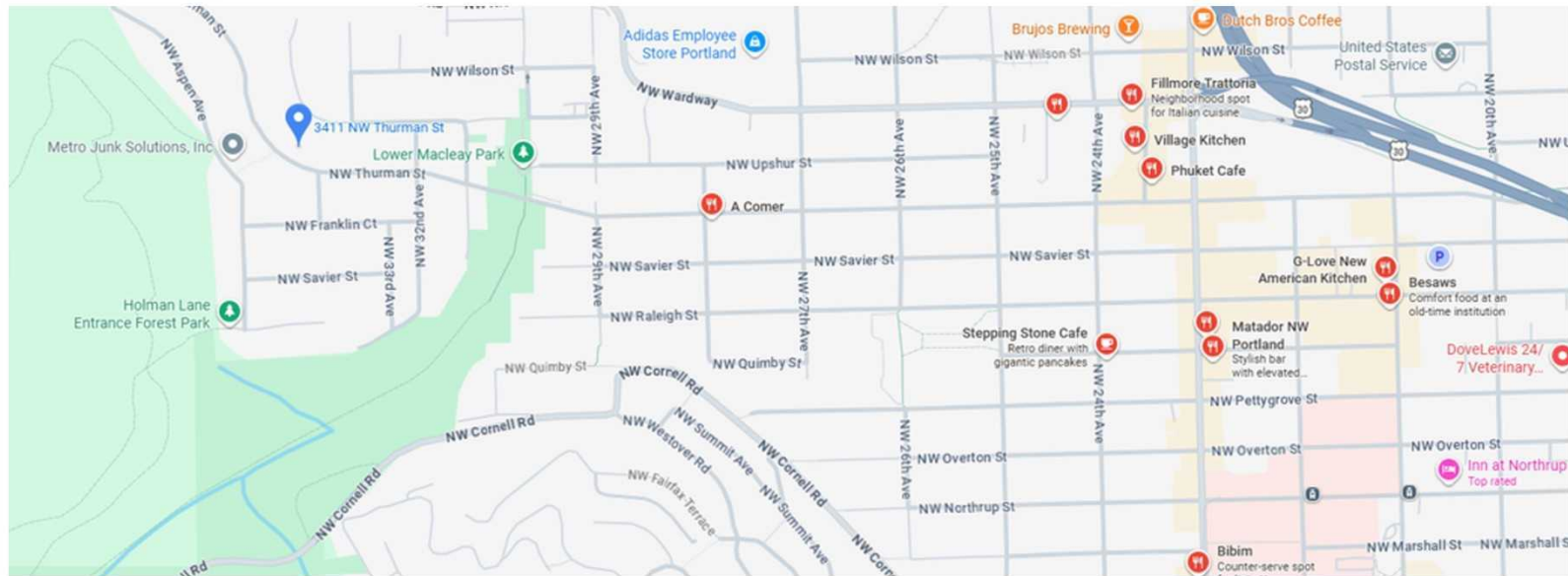
- Exterior landscaping with professional garden design and ongoing work continued through 2010. During this time we moved two giant (volunteer) trees from the back edge of the property, bringing endless views from every floor of the house across the river to Mt St Helens, Mt Adams, and the mountains beyond.

1997:

- We remodeled entire house including engineering, architecture services, asbestos removal, new closets, remodel of 3<sup>rd</sup> floor into adjoining rooms with skylights, new 7/8" hardwood floors on main level, gut remodel to kitchen and to second floor bathroom. New roof, new period-appropriate lighting fixtures throughout. Entirely new upgraded electrical service. New paint interior and exterior. Decommissioned oil tank. Total cost roughly \$160,000 in 1997

# LOCATION! LOCATION! LOCATION!

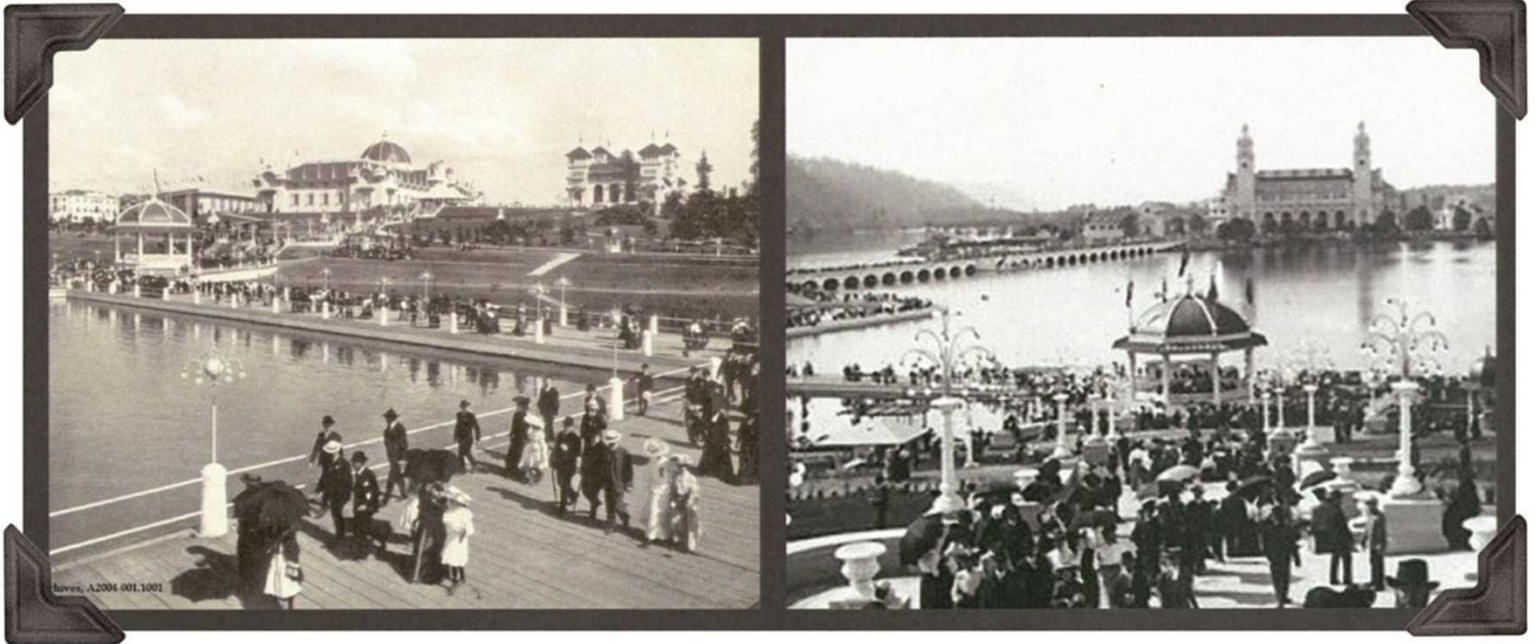
Extensive attention has been dedicated to the interiors as well as cultivating the gardens surrounding 3411, creating an atmosphere of tranquility and beauty. Despite the feeling of seclusion from the city's hustle and bustle, this location remains one of the most sought-after in the area. Nestled in the verdant Willamette Heights neighborhood, cradled in Forest on three sides, 3411 NW Thurman is just minutes away from the amenities along Thurman, located just below the bridge. Additionally, NW 23rd and 21st Avenues, along with the vibrant Slabtown district, are approximately a mile from the front door.



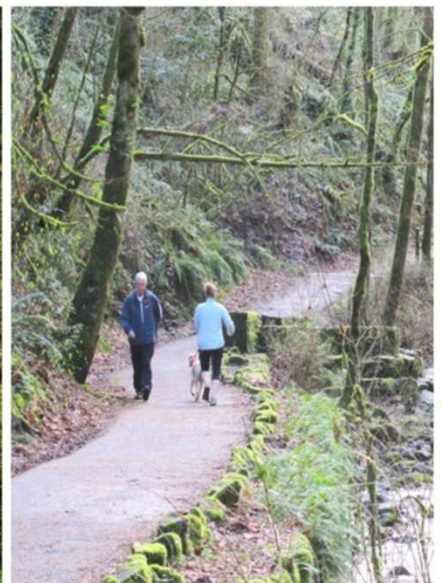
The close proximity to Forest Park also provides ample opportunities for outdoor enthusiasts to explore miles of trails, immersing themselves in the natural beauty of the Pacific Northwest. Whether you are seeking a peaceful retreat or a lively community experience, 3411 NW Thurman Street delivers an exceptional lifestyle choice that truly embodies the essence of Portland living.

# The History of Willamette Heights

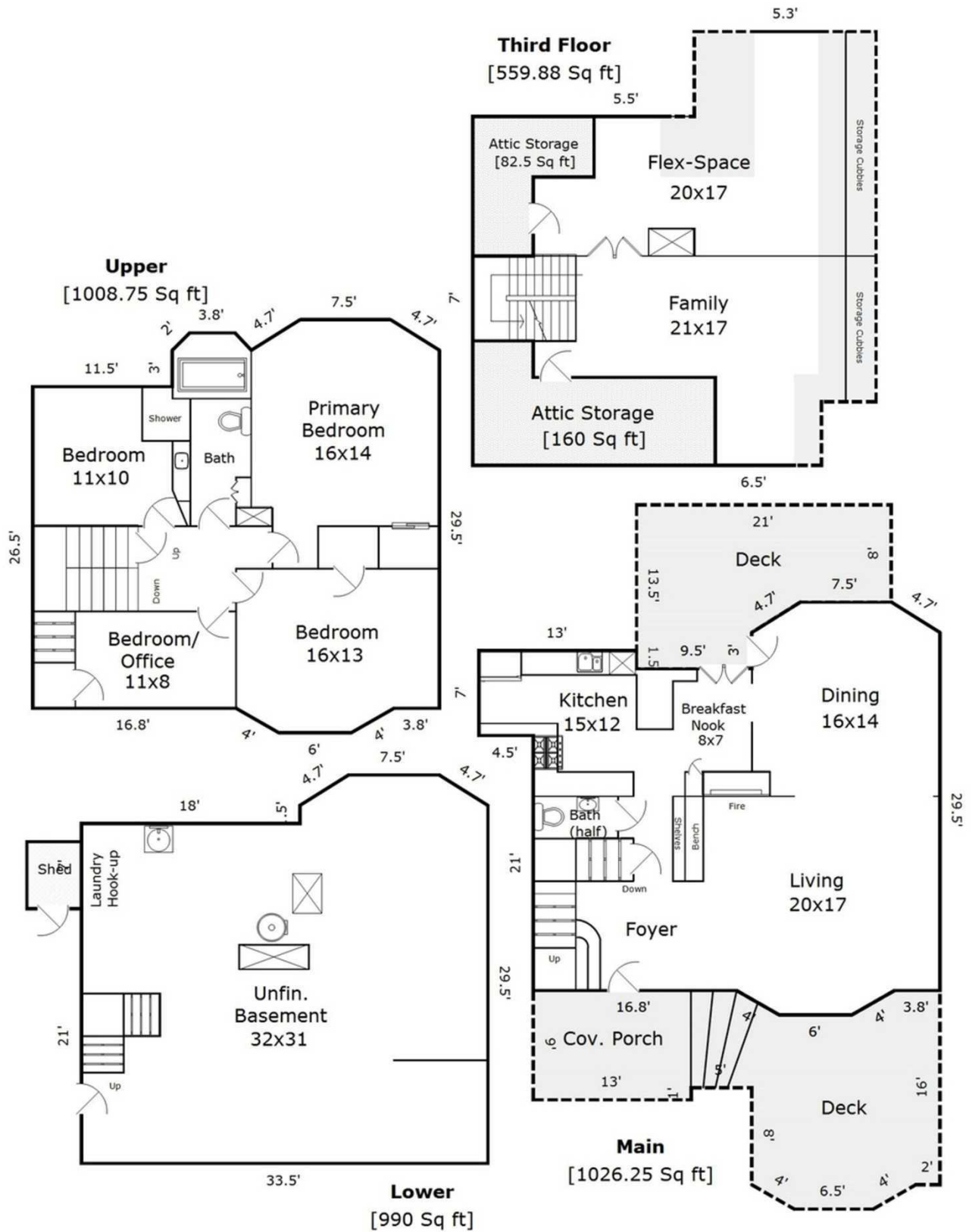
Scottish developers Russell and Blythe platted Willamette Heights in 1904. Russell and Blythe hired architect Emil Schacht to design “modern” homes, introducing the Craftsman style to Portland. During this early period the Lewis & Clark World’s Fair, located at the foot of the hill, attracted more than 2.5 million visitors. Trolley rides brought tour goers up Thurman and onto the lush hillside showcasing the first “Street of Dreams.”



Thanks to the strong preservation values of the local denizens, this neighborhood has hardly changed in 115 years. Sprawling Forest Park cradles the south, west and north borders of this neighborhood, making Willamette Heights one of the most sought after neighborhoods in the city. Here birdsong and wildlife rub shoulders with residents, walkers and trail runners seeking out tranquility and peace from the hustle and bustle of life. There is simply no other neighborhood like it.



# FLOOR PLAN FOR 3411 NW THURMAN STREET



**Main + Upper + Lower + Third Floor = 3,585 Sq ft**

Sketch Prepared for Named Client Only

Measured on 04/28/26

This sketch and the measurements shown herein are approximate and are only provided for rough demonstrative purposes. The measurements are not guaranteed and should not be relied upon. If measurements are material to the reader, then the reader should independently measure the dimensions. This sketch is provided to the preparer's client along with various limitations and conditions that apply to this sketch and which should be reviewed along with this sketch. If a person other than the designated Client uses the information herein (except a prohibition on such use), then such person agrees to be subject to the same terms and limitation as the designated Client. Separation of this text from the sketch above will subject the separating party to liability.

