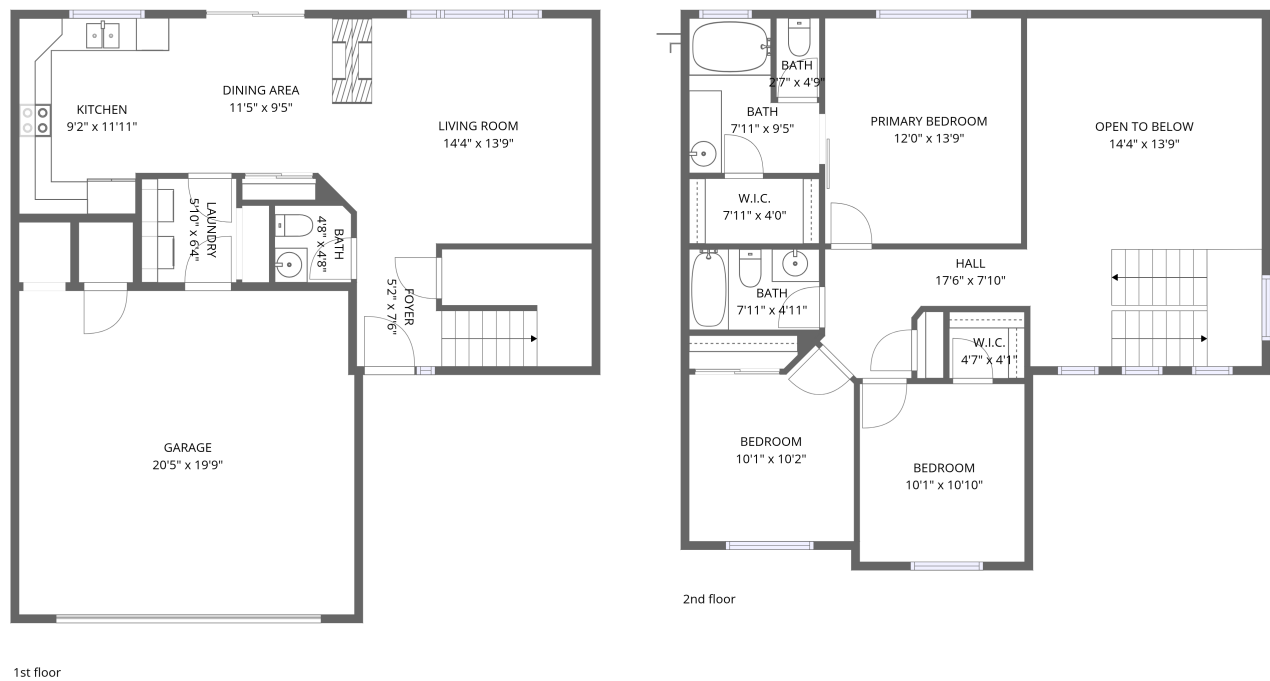


Home data report

5431 Suffolk Circle, Founders Village, Castle Rock, Douglas  
County, Colorado, United States, 80104



Total Area: 1379 sq. ft

1st Floor: 604 sq. ft, 2nd Floor: 775 sq. ft

Excluded: Garage 402 sq. ft, Undefined 24 sq. ft, Open to below 197 sq. ft, Walls: 160 sq. ft

Property summary

 **2** Floors

 **3** Bedrooms

 **2** Bathrooms

Home data report

**5431 Suffolk Circle, Founders Village, Castle Rock, Douglas  
County, Colorado, United States, 80104**

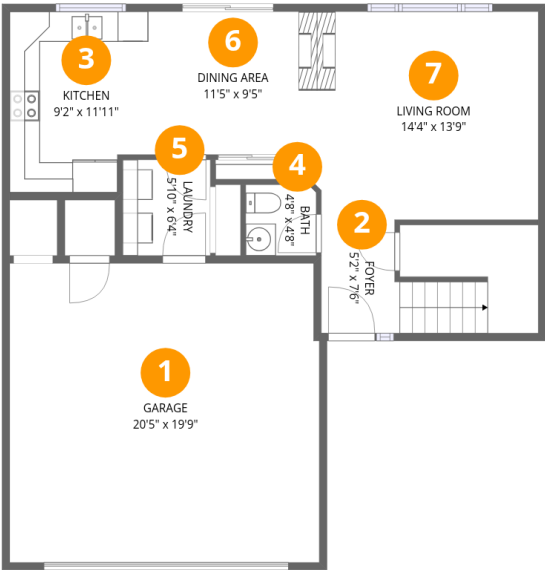


**1**  
Half baths



**1**  
Garages

5431 Suffolk Circle, Founders Village, Castle Rock, Douglas  
County, Colorado, United States, 80104

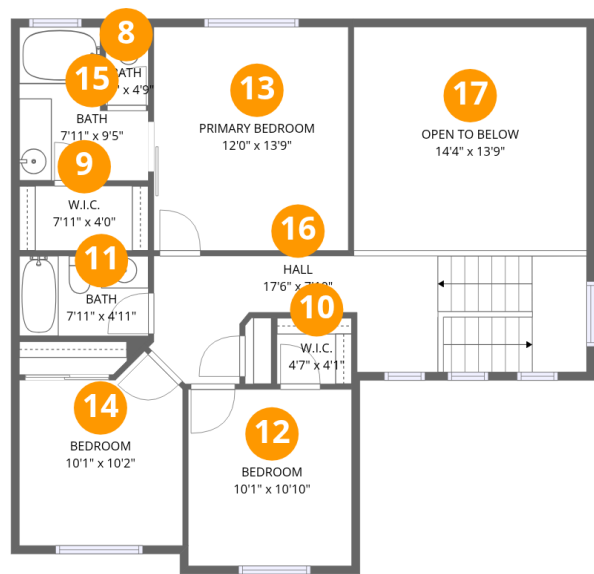


Room dimensions

Floor 1 Total:604sqft    Excluded: 426sqft

#		Dimensions	sqft	Counted as living area
1	Garage	20'5" x 19'9"	404 sq. ft	No
2	Foyer	5'2" x 7'6"	39 sq. ft	Yes
3	Kitchen	9'2" x 11'11"	109 sq. ft	Yes
4	Bath	4'8" x 4'8"	22 sq. ft	Yes
5	Laundry	5'10" x 6'4"	37 sq. ft	Yes
6	Dining Area	11'5" x 9'5"	108 sq. ft	Yes
7	Living Room	14'4" x 13'9"	197 sq. ft	Yes

5431 Suffolk Circle, Founders Village, Castle Rock, Douglas  
County, Colorado, United States, 80104



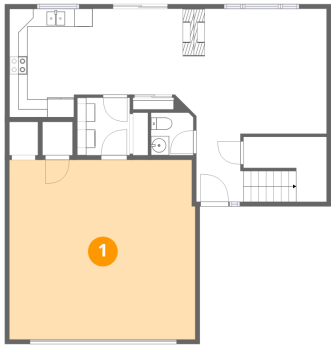
Room dimensions

Floor 2 Total:775sqft    Excluded: 197sqft

#		Dimensions	sqft	Counted as living area
8	Bath	2'7" x 4'9"	13 sq. ft	Yes
9	W.I.C.	7'11" x 4'0"	31 sq. ft	Yes
10	W.I.C.	4'7" x 4'1"	19 sq. ft	Yes
11	Bath	7'11" x 4'11"	39 sq. ft	Yes
12	Bedroom	10'1" x 10'10"	109 sq. ft	Yes
13	Primary Bedroom	12'0" x 13'9"	164 sq. ft	Yes
14	Bedroom	10'1" x 10'2"	102 sq. ft	Yes
15	Bath	7'11" x 9'5"	75 sq. ft	Yes
16	Hall	17'6" x 7'10"	137 sq. ft	Yes
17	Open To Below	14'4" x 13'9"	197 sq. ft	No

5431 Suffolk Circle, Founders Village, Castle Rock, Douglas  
County, Colorado, United States, 80104

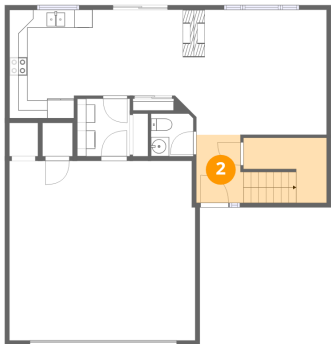
1 Floor 1 - Garage



Dimensions: 20'5" x 19'9"  
Area: 404 sq. ft  
Counted as living area: No

Heated: No  
Finished: No  
Enclosed: Yes  
Contiguous: Yes  
Permitted: Yes  
Wet space: No  
Addition: No  
Conversion: No

2 Floor 1 - Foyer



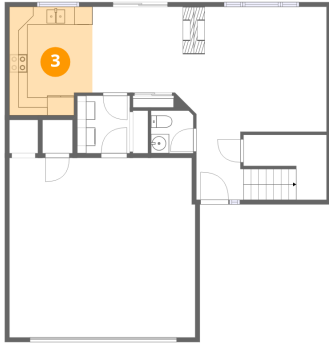
Dimensions: 5'2" x 7'6"  
Area: 39 sq. ft  
Counted as living area: Yes

Heated: Yes  
Finished: Yes  
Enclosed: Yes  
Contiguous: Yes  
Permitted: Yes  
Wet space: No  
Addition: No  
Conversion: No

**5431 Suffolk Circle, Founders Village, Castle Rock, Douglas  
County, Colorado, United States, 80104**

**3 Floor 1 - Kitchen**

---

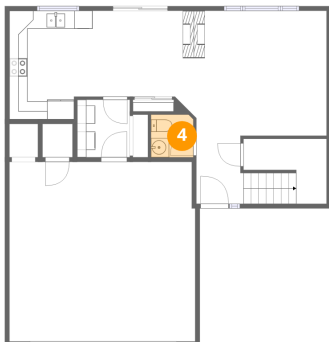


Dimensions: 9'2" x 11'11"  
Area: 109 sq. ft  
Counted as living area: Yes

Heated: Yes  
Finished: Yes  
Enclosed: Yes  
Contiguous: Yes  
Permitted: Yes  
Wet space: No  
Addition: No  
Conversion: No

**4 Floor 1 - Bath**

---

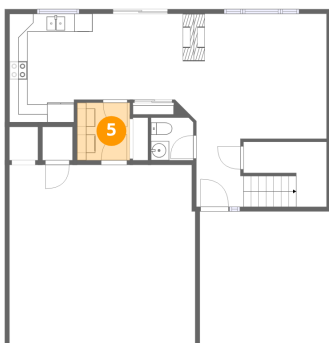


Dimensions: 4'8" x 4'8"  
Area: 22 sq. ft  
Counted as living area: Yes

Heated: Yes  
Finished: Yes  
Enclosed: Yes  
Contiguous: Yes  
Permitted: Yes  
Wet space: Yes  
Addition: No  
Conversion: No

**5 Floor 1 - Laundry**

---

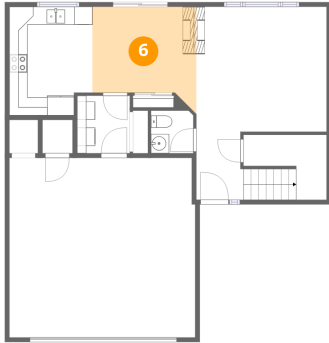


Dimensions: 5'10" x 6'4"  
Area: 37 sq. ft  
Counted as living area: Yes

Heated: Yes  
Finished: Yes  
Enclosed: Yes  
Contiguous: Yes  
Permitted: Yes  
Wet space: No  
Addition: No  
Conversion: No

5431 Suffolk Circle, Founders Village, Castle Rock, Douglas  
County, Colorado, United States, 80104

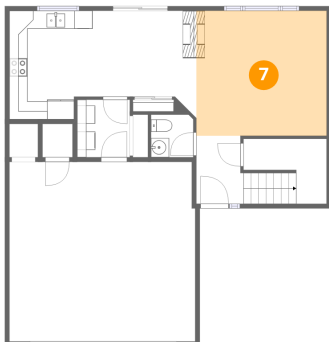
## 6 Floor 1 - Dining Area



Dimensions: 11'5" x 9'5"  
Area: 108 sq. ft  
Counted as living area: Yes

Heated: Yes  
Finished: Yes  
Enclosed: Yes  
Contiguous: Yes  
Permitted: Yes  
Wet space: No  
Addition: No  
Conversion: No

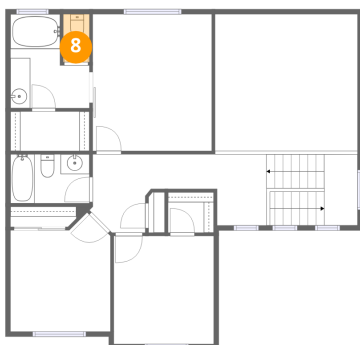
## 7 Floor 1 - Living Room



Dimensions: 14'4" x 13'9"  
Area: 197 sq. ft  
Counted as living area: Yes

Heated: Yes  
Finished: Yes  
Enclosed: Yes  
Contiguous: Yes  
Permitted: Yes  
Wet space: No  
Addition: No  
Conversion: No

## 8 Floor 2 - Bath



Dimensions: 2'7" x 4'9"  
Area: 13 sq. ft  
Counted as living area: Yes

Heated: Yes  
Finished: Yes  
Enclosed: Yes  
Contiguous: Yes  
Permitted: Yes  
Wet space: Yes  
Addition: No  
Conversion: No

5431 Suffolk Circle, Founders Village, Castle Rock, Douglas  
County, Colorado, United States, 80104

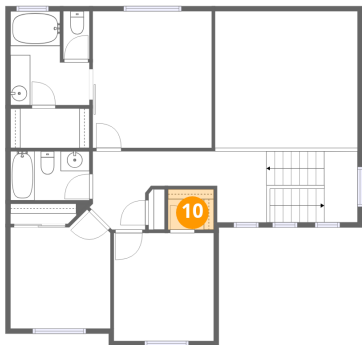
9 Floor 2 - W.I.C.



Dimensions: 7'11" x 4'0"  
Area: 31 sq. ft  
Counted as living area: Yes

Heated: Yes  
Finished: Yes  
Enclosed: Yes  
Contiguous: Yes  
Permitted: Yes  
Wet space: No  
Addition: No  
Conversion: No

10 Floor 2 - W.I.C.



Dimensions: 4'7" x 4'1"  
Area: 19 sq. ft  
Counted as living area: Yes

Heated: Yes  
Finished: Yes  
Enclosed: Yes  
Contiguous: Yes  
Permitted: Yes  
Wet space: No  
Addition: No  
Conversion: No

11 Floor 2 - Bath



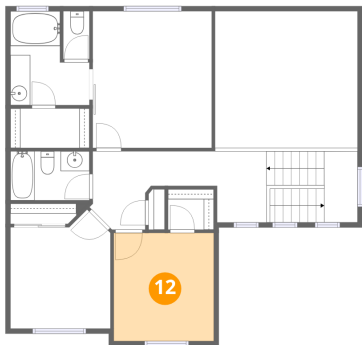
Dimensions: 7'11" x 4'11"  
Area: 39 sq. ft  
Counted as living area: Yes

Heated: Yes  
Finished: Yes  
Enclosed: Yes  
Contiguous: Yes  
Permitted: Yes  
Wet space: Yes  
Addition: No  
Conversion: No



5431 Suffolk Circle, Founders Village, Castle Rock, Douglas  
County, Colorado, United States, 80104

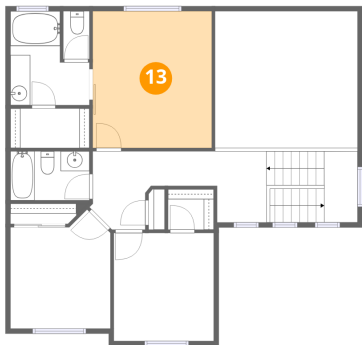
12 Floor 2 - Bedroom



Dimensions: 10'1" x 10'10"  
Area: 109 sq. ft  
Counted as living area: Yes

Heated: Yes  
Finished: Yes  
Enclosed: Yes  
Contiguous: Yes  
Permitted: Yes  
Wet space: No  
Addition: No  
Conversion: No

13 Floor 2 - Primary Bedroom



Dimensions: 12'0" x 13'9"  
Area: 164 sq. ft  
Counted as living area: Yes

Heated: Yes  
Finished: Yes  
Enclosed: Yes  
Contiguous: Yes  
Permitted: Yes  
Wet space: No  
Addition: No  
Conversion: No

14 Floor 2 - Bedroom



Dimensions: 10'1" x 10'2"  
Area: 102 sq. ft  
Counted as living area: Yes

Heated: Yes  
Finished: Yes  
Enclosed: Yes  
Contiguous: Yes  
Permitted: Yes  
Wet space: No  
Addition: No  
Conversion: No

5431 Suffolk Circle, Founders Village, Castle Rock, Douglas  
County, Colorado, United States, 80104

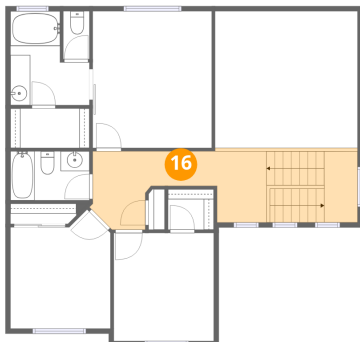
### 15 Floor 2 - Bath



Dimensions: 7'11" x 9'5"  
Area: 75 sq. ft  
Counted as living area: Yes

Heated: Yes  
Finished: Yes  
Enclosed: Yes  
Contiguous: Yes  
Permitted: Yes  
Wet space: Yes  
Addition: No  
Conversion: No

### 16 Floor 2 - Hall



Dimensions: 17'6" x 7'10"  
Area: 137 sq. ft  
Counted as living area: Yes

Heated: Yes  
Finished: Yes  
Enclosed: Yes  
Contiguous: Yes  
Permitted: Yes  
Wet space: No  
Addition: No  
Conversion: No

### 17 Floor 2 - Open To Below



Dimensions: 14'4" x 13'9"  
Area: 197 sq. ft  
Counted as living area: No

Heated: No  
Finished: No  
Enclosed: No  
Contiguous: Yes  
Permitted: No  
Wet space: No  
Addition: No  
Conversion: No