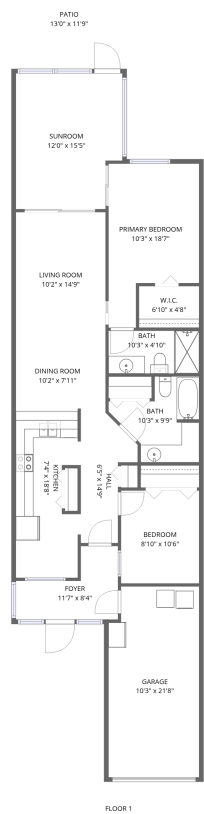


Home report

8222 Leafy Court, Bayonet Point, Port Richey, Pasco County, Florida, United States, 34668




Total Area: 1159 sq. ft


Floor 1: 1159 sq. ft

Excluded: Garage 216 sq. ft, Patio 155 sq. ft, Walls: 107 sq. ft

Property summary

 1 Floors

 2 Bedrooms

 2 Bathrooms

 1 Garages

8222 Leafy Court, Bayonet Point, Port Richey, Pasco County, Florida, United States, 34668



Room dimensions

Floor 1 Total:1159sqft Excluded: 371sqft

#		Max Dimensions	sqft	Included
1	Kitchen	7'4" x 18'8"	123 sq. ft	Yes
2	Bedroom	8'10" x 10'6"	93 sq. ft	Yes
3	Living Room	10'2" x 14'9"	150 sq. ft	Yes
4	W.I.C.	6'10" x 4'8"	32 sq. ft	Yes
5	Bath	10'3" x 9'9"	70 sq. ft	Yes
6	Patio	13'0" x 11'9"	155 sq. ft	No
7	Primary Bedroom	10'3" x 18'7"	155 sq. ft	Yes
8	Hall	6'5" x 14'9"	68 sq. ft	Yes
9	Foyer	11'7" x 8'4"	68 sq. ft	Yes
10	Bath	10'3" x 4'10"	50 sq. ft	Yes
11	Dining Room	10'2" x 7'11"	81 sq. ft	Yes

Home report

8222 Leafy Court, Bayonet Point, Port Richey, Pasco County,
Florida, United States, 34668

#		Max Dimensions	sqft	Included
12	Sunroom	12'0" x 15'5"	175 sq. ft	Yes
13	Garage	10'3" x 21'8"	216 sq. ft	No

8222 Leafy Court, Bayonet Point, Port Richey, Pasco County,
Florida, United States, 34668

1 Floor 1 - Kitchen



Max Dimensions: 7'4" x 18'8"
Calculated Area: 123 sq. ft
Included: Yes

Heated: Yes
Finished: Yes
Enclosed: Yes
Contiguous: Yes
Permitted: Yes
Wet space: No
Addition: No
Conversion: No

2 Floor 1 - Bedroom



Max Dimensions: 8'10" x 10'6"
Calculated Area: 93 sq. ft
Included: Yes

Heated: Yes
Finished: Yes
Enclosed: Yes
Contiguous: Yes
Permitted: Yes
Wet space: No
Addition: No
Conversion: No

8222 Leafy Court, Bayonet Point, Port Richey, Pasco County,
Florida, United States, 34668

3 Floor 1 - Living Room



Max Dimensions: 10'2" x 14'9"
Calculated Area: 150 sq. ft
Included: Yes

Heated: Yes
Finished: Yes
Enclosed: Yes
Contiguous: Yes
Permitted: Yes
Wet space: No
Addition: No
Conversion: No

4 Floor 1 - W.I.C.



Max Dimensions: 6'10" x 4'8"
Calculated Area: 32 sq. ft
Included: Yes

Heated: Yes
Finished: Yes
Enclosed: Yes
Contiguous: Yes
Permitted: Yes
Wet space: No
Addition: No
Conversion: No

5 Floor 1 - Bath



Max Dimensions: 10'3" x 9'9"
Calculated Area: 70 sq. ft
Included: Yes

Heated: Yes
Finished: Yes
Enclosed: Yes
Contiguous: Yes
Permitted: Yes
Wet space: Yes
Addition: No
Conversion: No

8222 Leafy Court, Bayonet Point, Port Richey, Pasco County,
Florida, United States, 34668

6 Floor 1 - Patio



Max Dimensions: 13'0" x 11'9"
Calculated Area: 155 sq. ft
Included: No

Heated: No
Finished: No
Enclosed: No
Contiguous: Yes
Permitted: Yes
Wet space: No
Addition: No
Conversion: No

7 Floor 1 - Primary Bedroom



Max Dimensions: 10'3" x 18'7"
Calculated Area: 155 sq. ft
Included: Yes

Heated: Yes
Finished: Yes
Enclosed: Yes
Contiguous: Yes
Permitted: Yes
Wet space: No
Addition: No
Conversion: No

8 Floor 1 - Hall



Max Dimensions: 6'5" x 14'9"
Calculated Area: 68 sq. ft
Included: Yes

Heated: Yes
Finished: Yes
Enclosed: Yes
Contiguous: Yes
Permitted: Yes
Wet space: No
Addition: No
Conversion: No

8222 Leafy Court, Bayonet Point, Port Richey, Pasco County,
Florida, United States, 34668

9 Floor 1 - Foyer



Max Dimensions: 11'7" x 8'4"
Calculated Area: 68 sq. ft
Included: Yes

Heated: Yes
Finished: Yes
Enclosed: Yes
Contiguous: Yes
Permitted: Yes
Wet space: No
Addition: No
Conversion: No

10 Floor 1 - Bath



Max Dimensions: 10'3" x 4'10"
Calculated Area: 50 sq. ft
Included: Yes

Heated: Yes
Finished: Yes
Enclosed: Yes
Contiguous: Yes
Permitted: Yes
Wet space: Yes
Addition: No
Conversion: No

11 Floor 1 - Dining Room



Max Dimensions: 10'2" x 7'11"
Calculated Area: 81 sq. ft
Included: Yes

Heated: Yes
Finished: Yes
Enclosed: Yes
Contiguous: Yes
Permitted: Yes
Wet space: No
Addition: No
Conversion: No

8222 Leafy Court, Bayonet Point, Port Richey, Pasco County,
Florida, United States, 34668

12 Floor 1 - Sunroom



Max Dimensions: 12'0" x 15'5"
Calculated Area: 175 sq. ft
Included: Yes

Heated: Yes
Finished: Yes
Enclosed: Yes
Contiguous: Yes
Permitted: Yes
Wet space: No
Addition: No
Conversion: No

13 Floor 1 - Garage



Max Dimensions: 10'3" x 21'8"
Calculated Area: 216 sq. ft
Included: No

Heated: No
Finished: No
Enclosed: Yes
Contiguous: Yes
Permitted: Yes
Wet space: No
Addition: No
Conversion: No