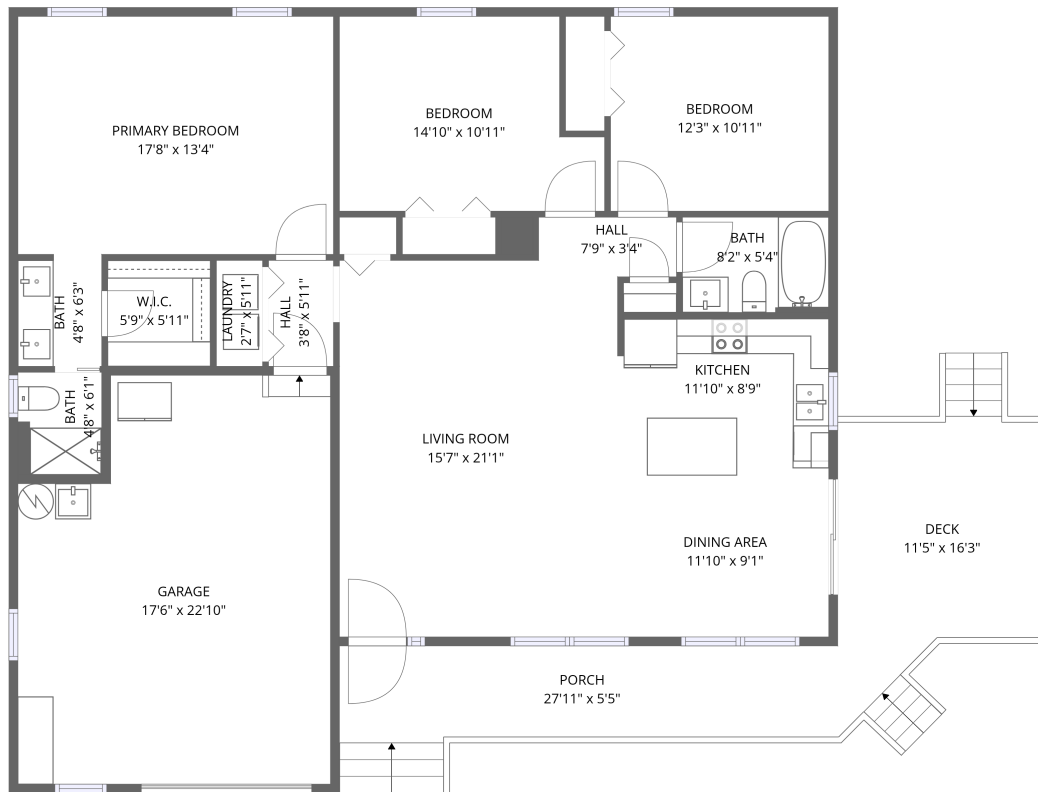


## Home data report

990 Highland Lake Road, Union Hall, Franklin County, Virginia,  
United States, 24176



MAIN LEVEL

**Total Area: 1334 sq. ft**

1st Floor: 1334 sq. ft

Excluded: Garage 369 sq. ft, Deck 174 sq. ft, Porch 161 sq. ft, Walls: 109 sq. ft

## Property summary

 **1** Floors

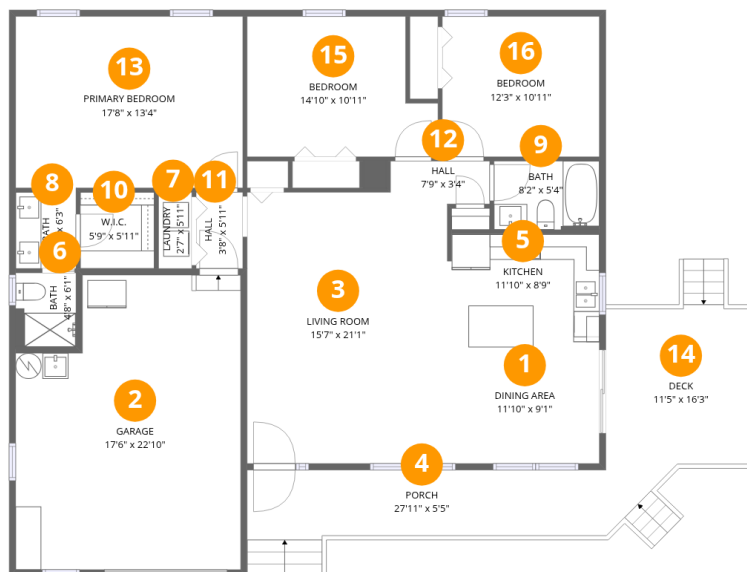
 **3** Bedrooms

 **2** Bathrooms

 **1** Garages

## Home data report

990 Highland Lake Road, Union Hall, Franklin County, Virginia,  
United States, 24176



## Room dimensions

Floor 1

Total:1334sqft Excluded: 704sqft

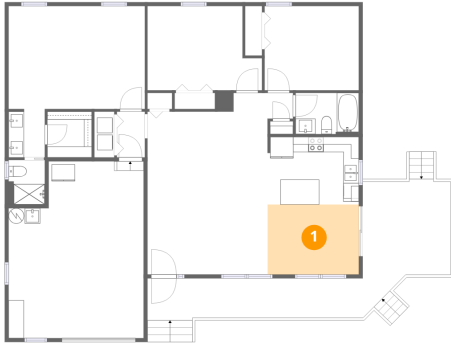
#		Dimensions	sqft	Counted as living area
1	Dining Area	11'10" x 9'1"	107 sq. ft	Yes
2	Garage	17'6" x 22'10"	400 sq. ft	No
3	Living Room	15'7" x 21'1"	328 sq. ft	Yes
4	Porch	27'11" x 5'5"	151 sq. ft	No
5	Kitchen	11'10" x 8'9"	104 sq. ft	Yes
6	Bath	4'8" x 6'1"	28 sq. ft	Yes
7	Laundry	2'7" x 5'11"	15 sq. ft	Yes
8	Bath	4'8" x 6'3"	29 sq. ft	Yes
9	Bath	8'2" x 5'4"	44 sq. ft	Yes
10	W.I.C.	5'9" x 5'11"	34 sq. ft	Yes
11	Hall	3'8" x 5'11"	22 sq. ft	Yes

Home data report

**990 Highland Lake Road, Union Hall, Franklin County, Virginia,  
United States, 24176**

#		Dimensions	sqft	Counted as living area
12	Hall	7'9" x 3'4"	26 sq. ft	Yes
13	Primary Bedroom	17'8" x 13'4"	236 sq. ft	Yes
14	Deck	11'5" x 16'3"	185 sq. ft	No
15	Bedroom	14'10" x 10'11"	162 sq. ft	Yes
16	Bedroom	12'3" x 10'11"	133 sq. ft	Yes

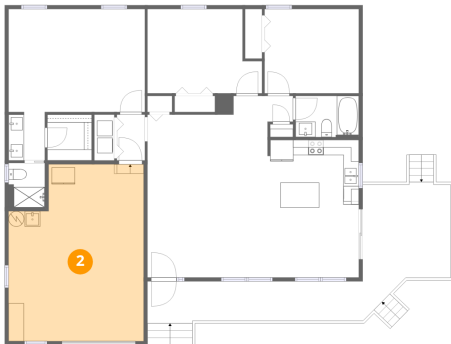
## 1 Floor 1 - Dining Area



Dimensions: 11'10" x 9'1"  
Area: 107 sq. ft  
Counted as living area: Yes

Heated: Yes  
Finished: Yes  
Enclosed: Yes  
Contiguous: Yes  
Permitted: Yes  
Wet space: No  
Addition: No  
Conversion: No

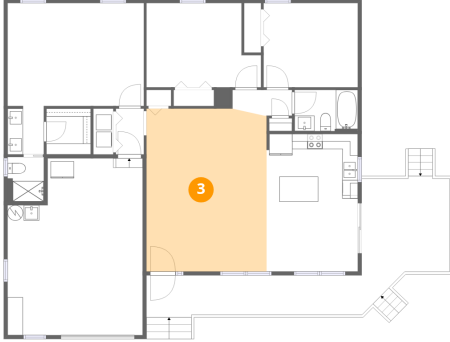
## 2 Floor 1 - Garage



Dimensions: 17'6" x 22'10"  
Area: 400 sq. ft  
Counted as living area: No

Heated: No  
Finished: No  
Enclosed: Yes  
Contiguous: Yes  
Permitted: Yes  
Wet space: No  
Addition: No  
Conversion: No

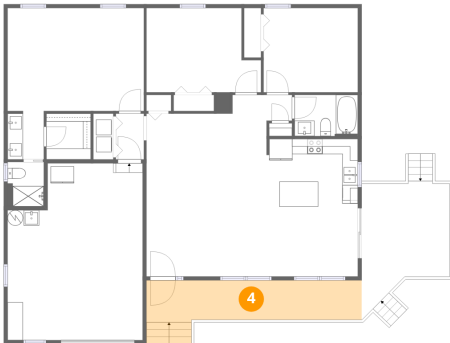
**3** Floor 1 - Living Room



Dimensions: 15'7" x 21'1"  
Area: 328 sq. ft  
Counted as living area: Yes

Heated: Yes  
Finished: Yes  
Enclosed: Yes  
Contiguous: Yes  
Permitted: Yes  
Wet space: No  
Addition: No  
Conversion: No

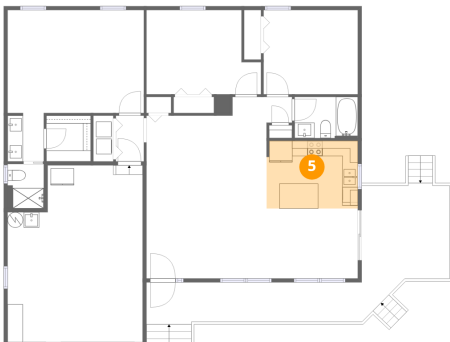
**4** Floor 1 - Porch



Dimensions: 27'11" x 5'5"  
Area: 151 sq. ft  
Counted as living area: No

Heated: No  
Finished: No  
Enclosed: No  
Contiguous: Yes  
Permitted: Yes  
Wet space: No  
Addition: No  
Conversion: No

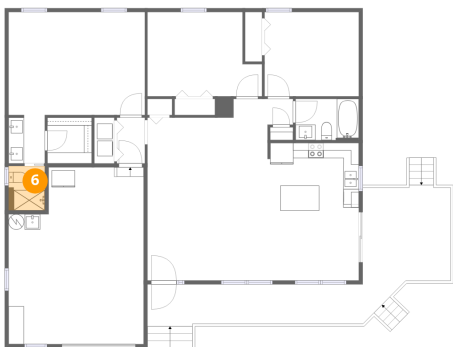
**5** Floor 1 - Kitchen



Dimensions: 11'10" x 8'9"  
Area: 104 sq. ft  
Counted as living area: Yes

Heated: Yes  
Finished: Yes  
Enclosed: Yes  
Contiguous: Yes  
Permitted: Yes  
Wet space: No  
Addition: No  
Conversion: No

**6** Floor 1 - Bath



Dimensions: 4'8" x 6'1"  
Area: 28 sq. ft  
Counted as living area: Yes

Heated: Yes  
Finished: Yes  
Enclosed: Yes  
Contiguous: Yes  
Permitted: Yes  
Wet space: Yes  
Addition: No  
Conversion: No

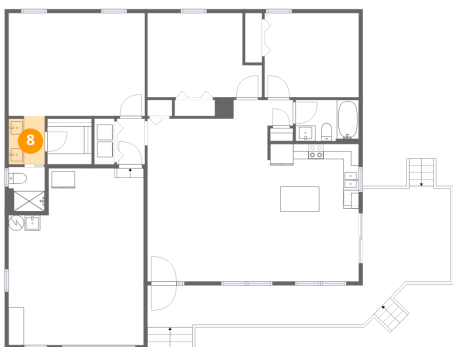
**7** Floor 1 - Laundry



Dimensions: 2'7" x 5'11"  
Area: 15 sq. ft  
Counted as living area: Yes

Heated: Yes  
Finished: Yes  
Enclosed: Yes  
Contiguous: Yes  
Permitted: Yes  
Wet space: No  
Addition: No  
Conversion: No

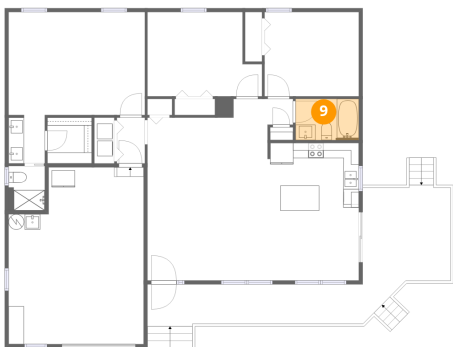
**8** Floor 1 - Bath



Dimensions: 4'8" x 6'3"  
Area: 29 sq. ft  
Counted as living area: Yes

Heated: Yes  
Finished: Yes  
Enclosed: Yes  
Contiguous: Yes  
Permitted: Yes  
Wet space: Yes  
Addition: No  
Conversion: No

**9** Floor 1 - Bath



Dimensions: 8'2" x 5'4"  
Area: 44 sq. ft  
Counted as living area: Yes

Heated: Yes  
Finished: Yes  
Enclosed: Yes  
Contiguous: Yes  
Permitted: Yes  
Wet space: Yes  
Addition: No  
Conversion: No

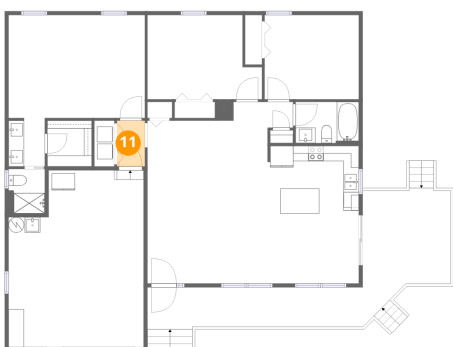
**10** Floor 1 - W.I.C.



Dimensions: 5'9" x 5'11"  
Area: 34 sq. ft  
Counted as living area: Yes

Heated: Yes  
Finished: Yes  
Enclosed: Yes  
Contiguous: Yes  
Permitted: Yes  
Wet space: No  
Addition: No  
Conversion: No

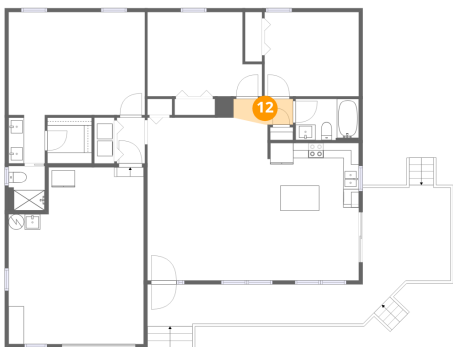
**11** Floor 1 - Hall



Dimensions: 3'8" x 5'11"  
Area: 22 sq. ft  
Counted as living area: Yes

Heated: Yes  
Finished: Yes  
Enclosed: Yes  
Contiguous: Yes  
Permitted: Yes  
Wet space: No  
Addition: No  
Conversion: No

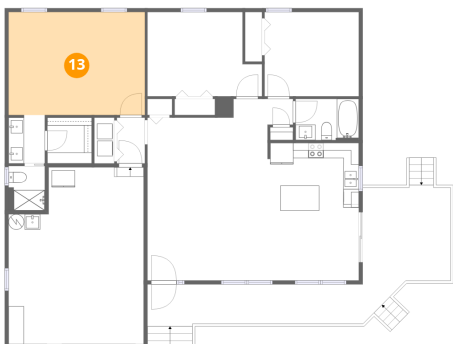
**12** Floor 1 - Hall



Dimensions: 7'9" x 3'4"  
Area: 26 sq. ft  
Counted as living area: Yes

Heated: Yes  
Finished: Yes  
Enclosed: Yes  
Contiguous: Yes  
Permitted: Yes  
Wet space: No  
Addition: No  
Conversion: No

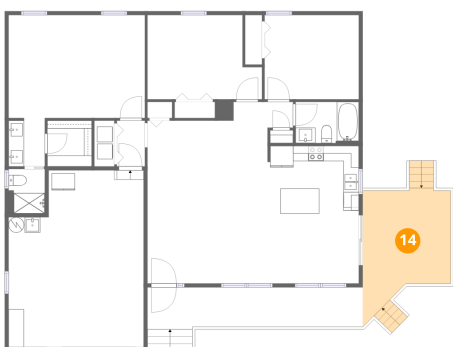
**13** Floor 1 - Primary Bedroom



Dimensions: 17'8" x 13'4"  
Area: 236 sq. ft  
Counted as living area: Yes

Heated: Yes  
Finished: Yes  
Enclosed: Yes  
Contiguous: Yes  
Permitted: Yes  
Wet space: No  
Addition: No  
Conversion: No

**14** Floor 1 - Deck



Dimensions: 11'5" x 16'3"  
Area: 185 sq. ft  
Counted as living area: No

Heated: No  
Finished: No  
Enclosed: No  
Contiguous: Yes  
Permitted: Yes  
Wet space: No  
Addition: No  
Conversion: No

990 Highland Lake Road, Union Hall, Franklin County, Virginia,  
United States, 24176

**15** Floor 1 - Bedroom

---

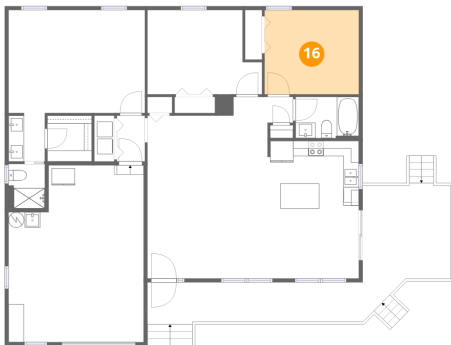


Dimensions: 14'10" x 10'11"  
Area: 162 sq. ft  
Counted as living area: Yes

Heated: Yes  
Finished: Yes  
Enclosed: Yes  
Contiguous: Yes  
Permitted: Yes  
Wet space: No  
Addition: No  
Conversion: No

**16** Floor 1 - Bedroom

---



Dimensions: 12'3" x 10'11"  
Area: 133 sq. ft  
Counted as living area: Yes

Heated: Yes  
Finished: Yes  
Enclosed: Yes  
Contiguous: Yes  
Permitted: Yes  
Wet space: No  
Addition: No  
Conversion: No