

Home report

8580 Southwest Inez Street, Southview, Tigard, Washington  
County, Oregon, United States, 97224



Total Area: 2269 sq. ft

Floor 1: 1059 sq. ft, Floor 2: 1210 sq. ft

Excluded: Covered deck 186 sq. ft, Fireplace 15 sq. ft, Walls: 146 sq. ft

Property summary



2 Floors



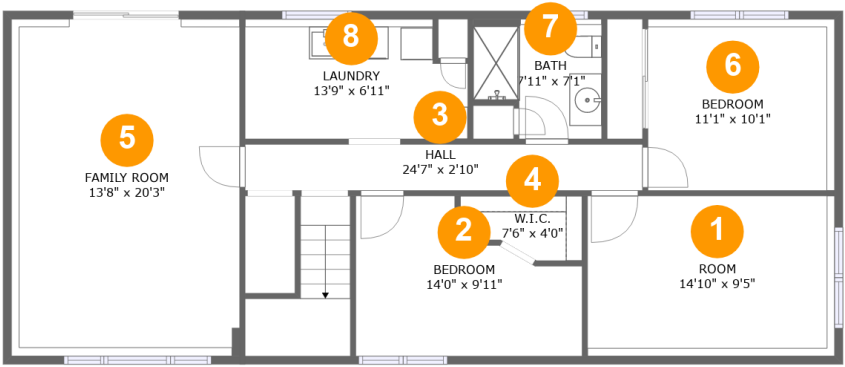
5 Bedrooms



3 Bathrooms

Home report

8580 Southwest Inez Street, Southview, Tigard, Washington  
County, Oregon, United States, 97224



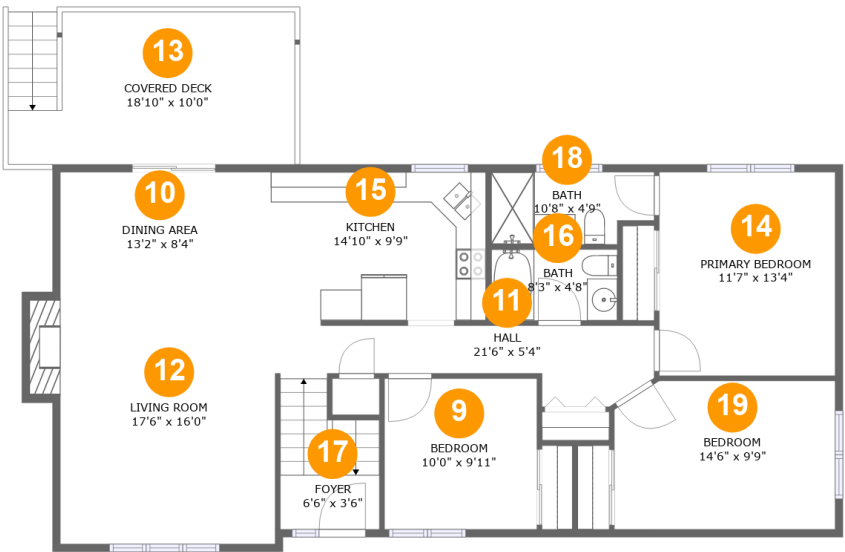
Room dimensions

Floor 1 Total:1059sqft Excluded: 0sqft

#		Max Dimensions	sqft	Included
1	Room	14'10" x 9'5"	151 sq. ft	Yes
2	Bedroom	14'0" x 9'11"	109 sq. ft	Yes
3	Hall	24'7" x 2'10"	70 sq. ft	Yes
4	W.I.C.	7'6" x 4'0"	26 sq. ft	Yes
5	Family Room	13'8" x 20'3"	294 sq. ft	Yes
6	Bedroom	11'1" x 10'1"	122 sq. ft	Yes
7	Bath	7'11" x 7'1"	52 sq. ft	Yes
8	Laundry	13'9" x 6'11"	96 sq. ft	Yes

Home report

8580 Southwest Inez Street, Southview, Tigard, Washington  
County, Oregon, United States, 97224



Room dimensions

Floor 2 Total:1210sqft    Excluded: 201sqft

#		Max Dimensions	sqft	Included
9	Bedroom	10'0" x 9'11"	99 sq. ft	Yes
10	Dining Area	13'2" x 8'4"	110 sq. ft	Yes
11	Hall	21'6" x 5'4"	81 sq. ft	Yes
12	Living Room	17'6" x 16'0"	253 sq. ft	Yes
13	Covered Deck	18'10" x 10'0"	186 sq. ft	No
14	Primary Bedroom	11'7" x 13'4"	154 sq. ft	Yes
15	Kitchen	14'10" x 9'9"	142 sq. ft	Yes
16	Bath	8'3" x 4'8"	39 sq. ft	Yes
17	Foyer	6'6" x 3'6"	55 sq. ft	Yes
18	Bath	10'8" x 4'9"	47 sq. ft	Yes
19	Bedroom	14'6" x 9'9"	139 sq. ft	Yes

8580 Southwest Inez Street, Southview, Tigard, Washington  
County, Oregon, United States, 97224

1 Floor 1 - Room



Max Dimensions: 14'10" x 9'5"  
Calculated Area: 151 sq. ft  
Included: Yes

Heated: Yes  
Finished: Yes  
Enclosed: Yes  
Contiguous: Yes  
Permitted: Yes  
Wet space: No  
Addition: No  
Conversion: No

2 Floor 1 - Bedroom

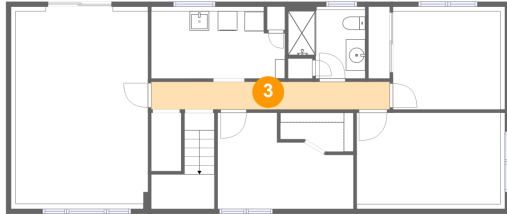


Max Dimensions: 14'0" x 9'11"  
Calculated Area: 109 sq. ft  
Included: Yes

Heated: Yes  
Finished: Yes  
Enclosed: Yes  
Contiguous: Yes  
Permitted: Yes  
Wet space: No  
Addition: No  
Conversion: No

8580 Southwest Inez Street, Southview, Tigard, Washington  
County, Oregon, United States, 97224

### 3 Floor 1 - Hall



Max Dimensions: 24'7" x 2'10"  
Calculated Area: 70 sq. ft  
Included: Yes

Heated: Yes  
Finished: Yes  
Enclosed: Yes  
Contiguous: Yes  
Permitted: Yes  
Wet space: No  
Addition: No  
Conversion: No

### 4 Floor 1 - W.I.C.



Max Dimensions: 7'6" x 4'0"  
Calculated Area: 26 sq. ft  
Included: Yes

Heated: Yes  
Finished: Yes  
Enclosed: Yes  
Contiguous: Yes  
Permitted: Yes  
Wet space: No  
Addition: No  
Conversion: No

### 5 Floor 1 - Family Room



Max Dimensions: 13'8" x 20'3"  
Calculated Area: 294 sq. ft  
Included: Yes

Heated: Yes  
Finished: Yes  
Enclosed: Yes  
Contiguous: Yes  
Permitted: Yes  
Wet space: No  
Addition: No  
Conversion: No

8580 Southwest Inez Street, Southview, Tigard, Washington  
County, Oregon, United States, 97224

## 6 Floor 1 - Bedroom



Max Dimensions: 11'1" x 10'1"  
Calculated Area: 122 sq. ft  
Included: Yes

Heated: Yes  
Finished: Yes  
Enclosed: Yes  
Contiguous: Yes  
Permitted: Yes  
Wet space: No  
Addition: No  
Conversion: No

## 7 Floor 1 - Bath



Max Dimensions: 7'11" x 7'1"  
Calculated Area: 52 sq. ft  
Included: Yes

Heated: Yes  
Finished: Yes  
Enclosed: Yes  
Contiguous: Yes  
Permitted: Yes  
Wet space: Yes  
Addition: No  
Conversion: No

## 8 Floor 1 - Laundry

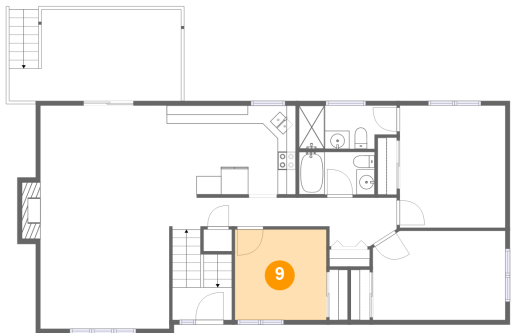


Max Dimensions: 13'9" x 6'11"  
Calculated Area: 96 sq. ft  
Included: Yes

Heated: Yes  
Finished: Yes  
Enclosed: Yes  
Contiguous: Yes  
Permitted: Yes  
Wet space: No  
Addition: No  
Conversion: No

8580 Southwest Inez Street, Southview, Tigard, Washington  
County, Oregon, United States, 97224

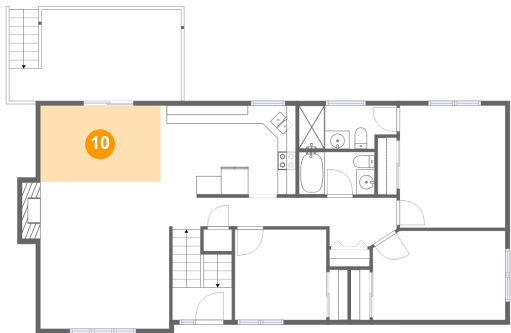
9 Floor 2 - Bedroom



Max Dimensions: 10'0" x 9'11"  
Calculated Area: 99 sq. ft  
Included: Yes

Heated: Yes  
Finished: Yes  
Enclosed: Yes  
Contiguous: Yes  
Permitted: Yes  
Wet space: No  
Addition: No  
Conversion: No

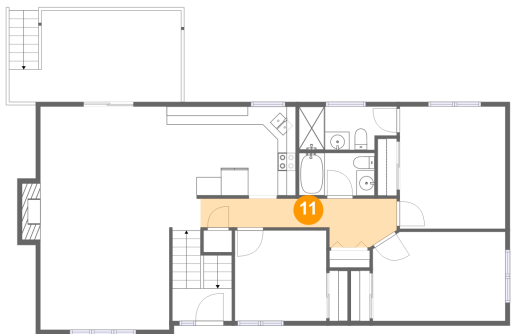
10 Floor 2 - Dining Area



Max Dimensions: 13'2" x 8'4"  
Calculated Area: 110 sq. ft  
Included: Yes

Heated: Yes  
Finished: Yes  
Enclosed: Yes  
Contiguous: Yes  
Permitted: Yes  
Wet space: No  
Addition: No  
Conversion: No

11 Floor 2 - Hall



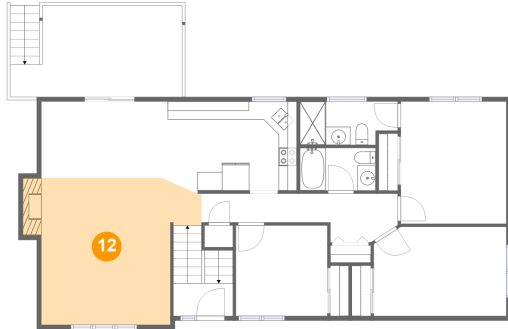
Max Dimensions: 21'6" x 5'4"  
Calculated Area: 81 sq. ft  
Included: Yes

Heated: Yes  
Finished: Yes  
Enclosed: Yes  
Contiguous: Yes  
Permitted: Yes  
Wet space: No  
Addition: No  
Conversion: No

## Home report

8580 Southwest Inez Street, Southview, Tigard, Washington  
County, Oregon, United States, 97224

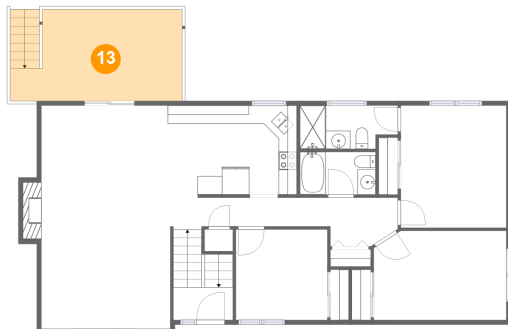
### 12 Floor 2 - Living Room



Max Dimensions: 17'6" x 16'0"  
Calculated Area: 253 sq. ft  
Included: Yes

Heated: Yes  
Finished: Yes  
Enclosed: Yes  
Contiguous: Yes  
Permitted: Yes  
Wet space: No  
Addition: No  
Conversion: No

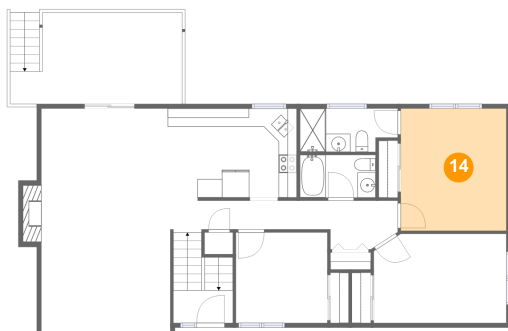
### 13 Floor 2 - Covered Deck



Max Dimensions: 18'10" x 10'0"  
Calculated Area: 186 sq. ft  
Included: No

Heated: No  
Finished: Yes  
Enclosed: No  
Contiguous: Yes  
Permitted: Yes  
Wet space: No  
Addition: No  
Conversion: No

### 14 Floor 2 - Primary Bedroom



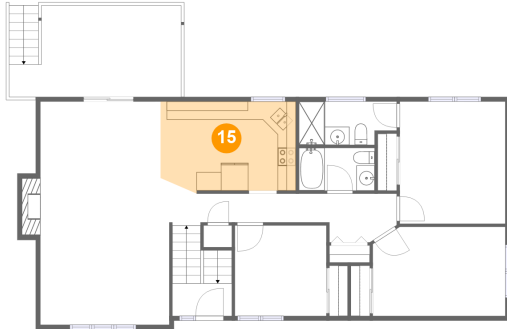
Max Dimensions: 11'7" x 13'4"  
Calculated Area: 154 sq. ft  
Included: Yes

Heated: Yes  
Finished: Yes  
Enclosed: Yes  
Contiguous: Yes  
Permitted: Yes  
Wet space: No  
Addition: No  
Conversion: No

## Home report

8580 Southwest Inez Street, Southview, Tigard, Washington  
County, Oregon, United States, 97224

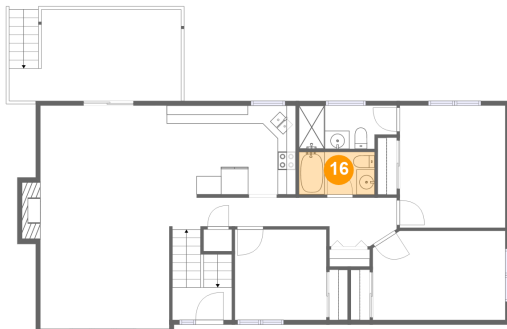
### 15 Floor 2 - Kitchen



Max Dimensions: 14'10" x 9'9"  
Calculated Area: 142 sq. ft  
Included: Yes

Heated: Yes  
Finished: Yes  
Enclosed: Yes  
Contiguous: Yes  
Permitted: Yes  
Wet space: No  
Addition: No  
Conversion: No

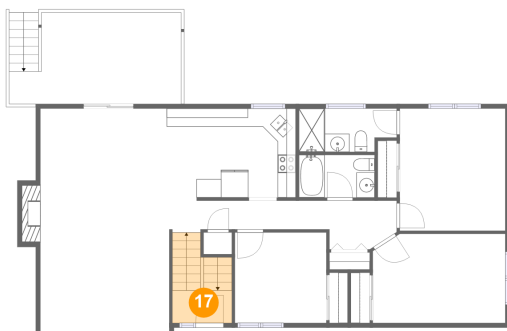
### 16 Floor 2 - Bath



Max Dimensions: 8'3" x 4'8"  
Calculated Area: 39 sq. ft  
Included: Yes

Heated: Yes  
Finished: Yes  
Enclosed: Yes  
Contiguous: Yes  
Permitted: Yes  
Wet space: Yes  
Addition: No  
Conversion: No

### 17 Floor 2 - Foyer



Max Dimensions: 6'6" x 3'6"  
Calculated Area: 55 sq. ft  
Included: Yes

Heated: Yes  
Finished: Yes  
Enclosed: Yes  
Contiguous: Yes  
Permitted: Yes  
Wet space: No  
Addition: No  
Conversion: No

8580 Southwest Inez Street, Southview, Tigard, Washington  
County, Oregon, United States, 97224

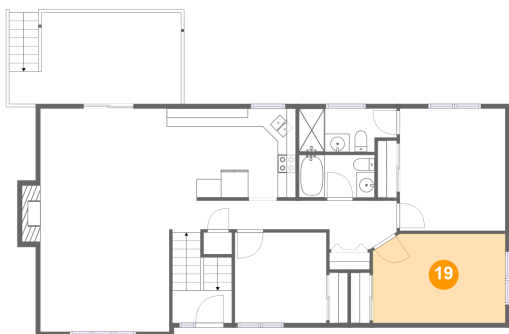
18 Floor 2 - Bath



Max Dimensions: 10'8" x 4'9"  
Calculated Area: 47 sq. ft  
Included: Yes

Heated: Yes  
Finished: Yes  
Enclosed: Yes  
Contiguous: Yes  
Permitted: Yes  
Wet space: Yes  
Addition: No  
Conversion: No

19 Floor 2 - Bedroom



Max Dimensions: 14'6" x 9'9"  
Calculated Area: 139 sq. ft  
Included: Yes

Heated: Yes  
Finished: Yes  
Enclosed: Yes  
Contiguous: Yes  
Permitted: Yes  
Wet space: No  
Addition: No  
Conversion: No