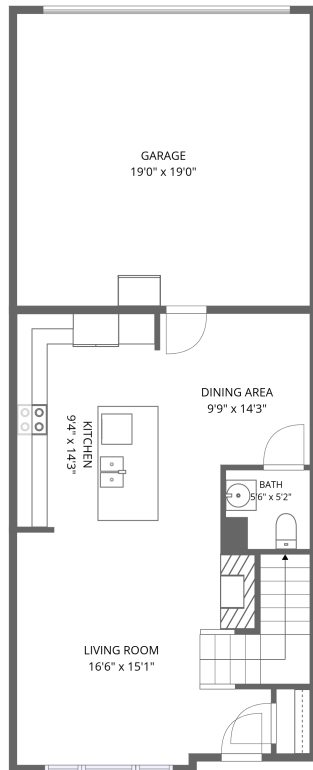
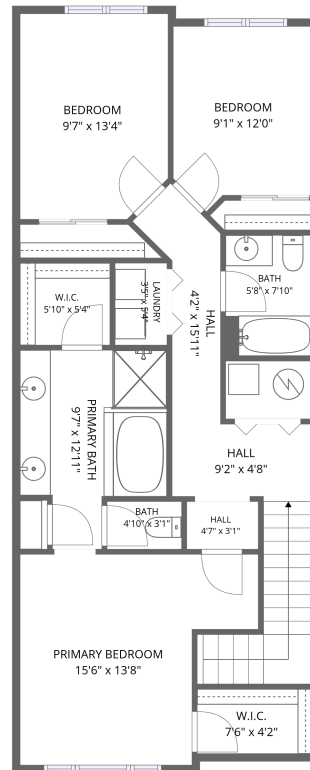


Home data report

7474 S Logan St, Littleton, CO, US



1st floor



2nd floor


Total Area: 1450 sq. ft

1st Floor: 554 sq. ft, 2nd Floor: 896 sq. ft

Excluded: Garage 362 sq. ft, Undefined 21 sq. ft, Walls: 95 sq. ft

Property summary

 **2** Floors

 **3** Bedrooms

 **2** Bathrooms

Home data report

7474 S Logan St, Littleton, CO, US

 **1**
Half baths

 **1**
Garages

Home data report

7474 S Logan St, Littleton, CO, US

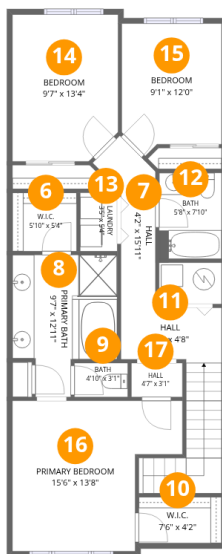


Room dimensions

Floor 1

Total: 554 sqft Excluded: 362 sqft

| # | | Dimensions | sqft | Counted as living area |
|---|-------------|---------------|------------|------------------------|
| 1 | Garage | 19'0" x 19'0" | 362 sq. ft | No |
| 2 | Kitchen | 9'4" x 14'3" | 131 sq. ft | Yes |
| 3 | Bath | 5'6" x 5'2" | 28 sq. ft | Yes |
| 4 | Living Room | 16'6" x 15'1" | 259 sq. ft | Yes |
| 5 | Dining Area | 9'9" x 14'3" | 113 sq. ft | Yes |



Room dimensions

Floor 2

Total: 896 sqft Excluded: 21 sqft

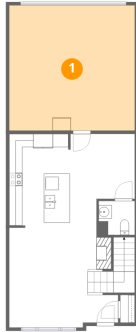
| # | | Dimensions | sqft | Counted as living area |
|----|-----------------|---------------|------------|------------------------|
| 6 | W.I.C. | 5'10" x 5'4" | 31 sq. ft | Yes |
| 7 | Hall | 4'2" x 15'11" | 51 sq. ft | Yes |
| 8 | Primary Bath | 9'7" x 12'11" | 102 sq. ft | Yes |
| 9 | Bath | 4'10" x 3'1" | 15 sq. ft | Yes |
| 10 | W.I.C. | 7'6" x 4'2" | 32 sq. ft | Yes |
| 11 | Hall | 9'2" x 4'8" | 96 sq. ft | Yes |
| 12 | Bath | 5'8" x 7'10" | 45 sq. ft | Yes |
| 13 | Laundry | 3'5" x 5'4" | 18 sq. ft | Yes |
| 14 | Bedroom | 9'7" x 13'4" | 125 sq. ft | Yes |
| 15 | Bedroom | 9'1" x 12'0" | 100 sq. ft | Yes |
| 16 | Primary Bedroom | 15'6" x 13'8" | 174 sq. ft | Yes |

Home data report

7474 S Logan St, Littleton, CO, US

| # | | Dimensions | sqft | Counted as living area |
|----|------|-------------|-----------|------------------------|
| 17 | Hall | 4'7" x 3'1" | 14 sq. ft | Yes |

1 Floor 1 - Garage



Dimensions: 19'0" x 19'0"
Area: 362 sq. ft
Counted as living area: No

Heated: No
Finished: No
Enclosed: Yes
Contiguous: Yes
Permitted: Yes
Wet space: No
Addition: No
Conversion: No

2 Floor 1 - Kitchen



Dimensions: 9'4" x 14'3"
Area: 131 sq. ft
Counted as living area: Yes

Heated: Yes
Finished: Yes
Enclosed: Yes
Contiguous: Yes
Permitted: Yes
Wet space: No
Addition: No
Conversion: No

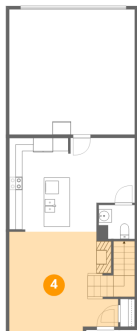
3 Floor 1 - Bath



Dimensions: 5'6" x 5'2"
Area: 28 sq. ft
Counted as living area: Yes

Heated: Yes
Finished: Yes
Enclosed: Yes
Contiguous: Yes
Permitted: Yes
Wet space: Yes
Addition: No
Conversion: No

4 Floor 1 - Living Room



Dimensions: 16'6" x 15'1"
Area: 259 sq. ft
Counted as living area: Yes

Heated: Yes
Finished: Yes
Enclosed: Yes
Contiguous: Yes
Permitted: Yes
Wet space: No
Addition: No
Conversion: No

5 Floor 1 - Dining Area



Dimensions: 9'9" x 14'3"
Area: 113 sq. ft
Counted as living area: Yes

Heated: Yes
Finished: Yes
Enclosed: Yes
Contiguous: Yes
Permitted: Yes
Wet space: No
Addition: No
Conversion: No

6 Floor 2 - W.I.C.



Dimensions: 5'10" x 5'4"
Area: 31 sq. ft
Counted as living area: Yes

Heated: Yes
Finished: Yes
Enclosed: Yes
Contiguous: Yes
Permitted: Yes
Wet space: No
Addition: No
Conversion: No

7 Floor 2 - Hall



Dimensions: 4'2" x 15'11"
Area: 51 sq. ft
Counted as living area: Yes

Heated: Yes
Finished: Yes
Enclosed: Yes
Contiguous: Yes
Permitted: Yes
Wet space: No
Addition: No
Conversion: No

8 Floor 2 - Primary Bath



Dimensions: 9'7" x 12'11"
Area: 102 sq. ft
Counted as living area: Yes

Heated: Yes
Finished: Yes
Enclosed: Yes
Contiguous: Yes
Permitted: Yes
Wet space: Yes
Addition: No
Conversion: No

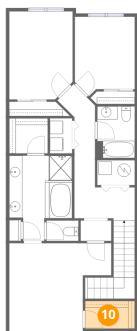
9 Floor 2 - Bath



Dimensions: 4'10" x 3'1"
Area: 15 sq. ft
Counted as living area: Yes

Heated: Yes
Finished: Yes
Enclosed: Yes
Contiguous: Yes
Permitted: Yes
Wet space: Yes
Addition: No
Conversion: No

10 Floor 2 - W.I.C.



Dimensions: 7'6" x 4'2"
Area: 32 sq. ft
Counted as living area: Yes

Heated: Yes
Finished: Yes
Enclosed: Yes
Contiguous: Yes
Permitted: Yes
Wet space: No
Addition: No
Conversion: No

11 Floor 2 - Hall



Dimensions: 9'2" x 4'8"
Area: 96 sq. ft
Counted as living area: Yes

Heated: Yes
Finished: Yes
Enclosed: Yes
Contiguous: Yes
Permitted: Yes
Wet space: No
Addition: No
Conversion: No

12 Floor 2 - Bath



Dimensions: 5'8" x 7'10"
Area: 45 sq. ft
Counted as living area: Yes

Heated: Yes
Finished: Yes
Enclosed: Yes
Contiguous: Yes
Permitted: Yes
Wet space: Yes
Addition: No
Conversion: No

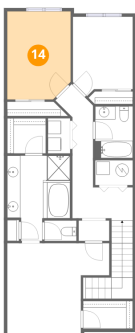
13 Floor 2 - Laundry



Dimensions: 3'5" x 5'4"
Area: 18 sq. ft
Counted as living area: Yes

Heated: Yes
Finished: Yes
Enclosed: Yes
Contiguous: Yes
Permitted: Yes
Wet space: No
Addition: No
Conversion: No

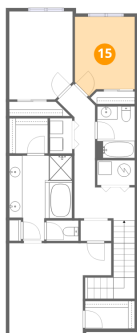
14 Floor 2 - Bedroom



Dimensions: 9'7" x 13'4"
Area: 125 sq. ft
Counted as living area: Yes

Heated: Yes
Finished: Yes
Enclosed: Yes
Contiguous: Yes
Permitted: Yes
Wet space: No
Addition: No
Conversion: No

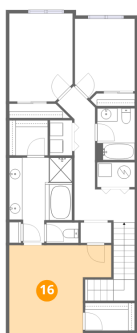
15 Floor 2 - Bedroom



Dimensions: 9'1" x 12'0"
Area: 100 sq. ft
Counted as living area: Yes

Heated: Yes
Finished: Yes
Enclosed: Yes
Contiguous: Yes
Permitted: Yes
Wet space: No
Addition: No
Conversion: No

16 Floor 2 - Primary Bedroom



Dimensions: 15'6" x 13'8"
Area: 174 sq. ft
Counted as living area: Yes

Heated: Yes
Finished: Yes
Enclosed: Yes
Contiguous: Yes
Permitted: Yes
Wet space: No
Addition: No
Conversion: No

17 Floor 2 - Hall



Dimensions: 4'7" x 3'1"
Area: 14 sq. ft
Counted as living area: Yes

Heated: Yes
Finished: Yes
Enclosed: Yes
Contiguous: Yes
Permitted: Yes
Wet space: No
Addition: No
Conversion: No