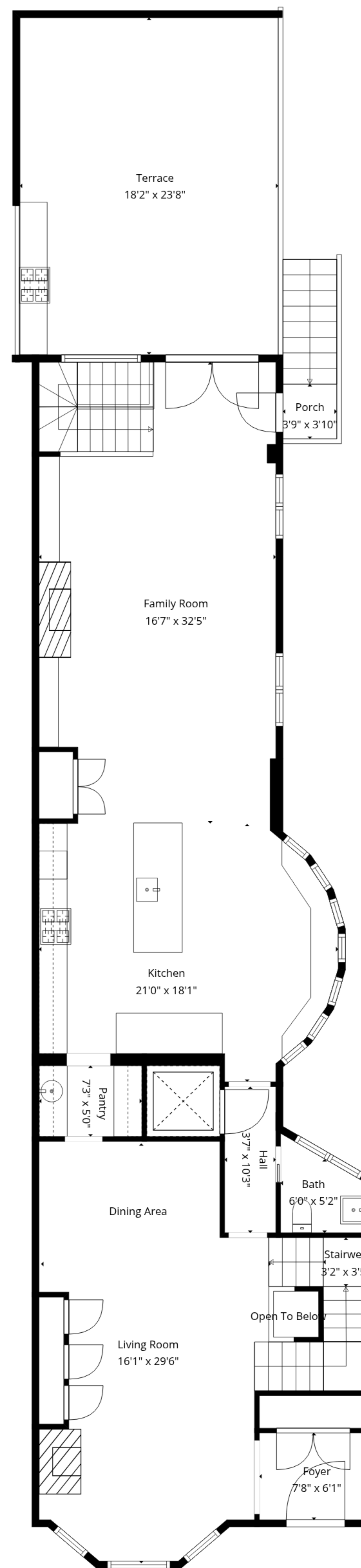


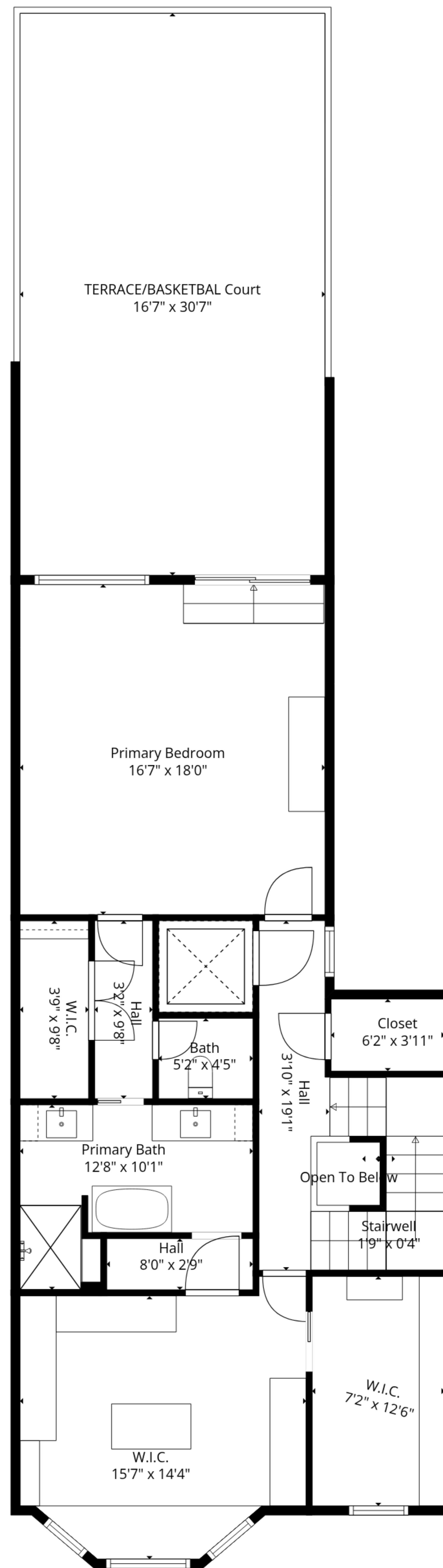
**Total: 4781 sq. ft**

Basement: 1370 sq. Ft, 1st Floor: 1517 sq. Ft, 2nd Floor: 992 sq. Ft, 3rd Floor: 902 sq. ft  
 Excluded Areas: Storage: 30 sq. Ft, Garage: 375 sq. Ft, Porch: 48 sq. Ft,  
 Terrace: 429 sq. Ft, Stairwell: 151 sq. Ft, TERRACE/BASKETBAL Court: 509 sq. Ft,  
 Open To Below: 31 sq. Ft, Walls: 412 sq. ft



**Total: 4781 sq. ft**

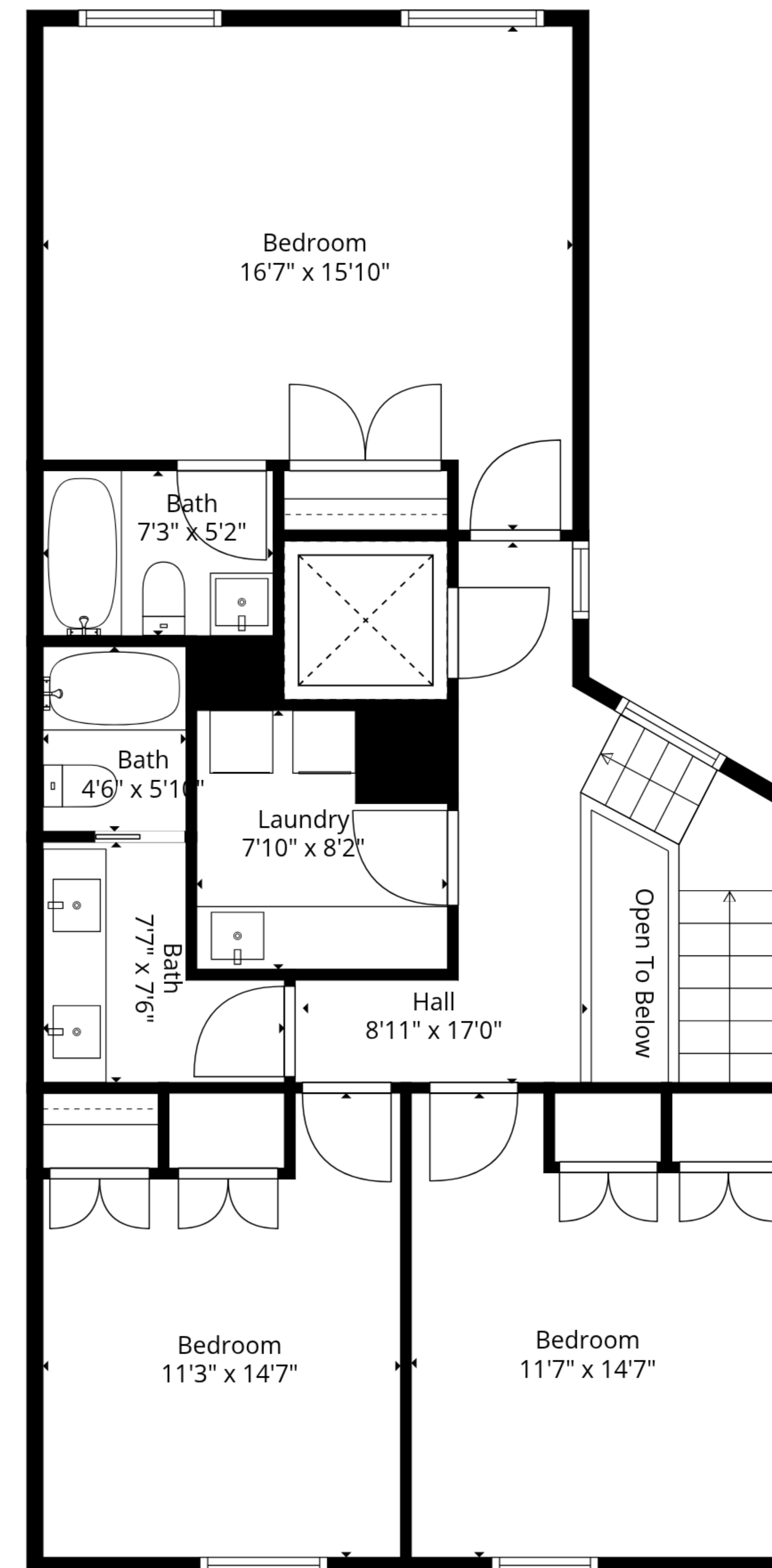
Basement: 1370 sq. Ft, 1st Floor: 1517 sq. Ft, 2nd Floor: 992 sq. Ft, 3rd Floor: 902 sq. ft  
 Excluded Areas: Storage: 30 sq. Ft, Garage: 375 sq. Ft, Porch: 48 sq. Ft,  
 Terrace: 429 sq. Ft, Stairwell: 151 sq. Ft, TERRACE/BASKETBAL Court: 509 sq. Ft,  
 Open To Below: 31 sq. Ft, Walls: 412 sq. ft



**Total: 4781 sq. ft**

Basement: 1370 sq. Ft, 1st Floor: 1517 sq. Ft, 2nd Floor: 992 sq. Ft, 3rd Floor: 902 sq. ft  
 Excluded Areas: Storage: 30 sq. Ft, Garage: 375 sq. Ft, Porch: 48 sq. Ft,  
 Terrace: 429 sq. Ft, Stairwell: 151 sq. Ft, TERRACE/BASKETBAL Court: 509 sq. Ft,  
 Open To Below: 31 sq. Ft, Walls: 412 sq. ft

Stairwell  
Nan'nan" x Nan'nan"



**Total: 4781 sq. ft**

Basement: 1370 sq. Ft, 1st Floor: 1517 sq. Ft, 2nd Floor: 992 sq. Ft, 3rd Floor: 902 sq. ft  
Excluded Areas: Storage: 30 sq. Ft, Garage: 375 sq. Ft, Porch: 48 sq. Ft,  
Terrace: 429 sq. Ft, Stairwell: 151 sq. Ft, TERRACE/BASKETBAL Court: 509 sq. Ft,  
Open To Below: 31 sq. Ft, Walls: 412 sq. ft



**Total: 4781 sq. ft**

Basement: 1370 sq. Ft, 1st Floor: 1517 sq. Ft, 2nd Floor: 992 sq. Ft, 3rd Floor: 902 sq. ft  
 Excluded Areas: Storage: 30 sq. Ft, Garage: 375 sq. Ft, Porch: 48 sq. Ft,  
 Terrace: 429 sq. Ft, Stairwell: 151 sq. Ft, TERRACE/BASKETBALL Court: 509 sq. Ft,  
 Open To Below: 31 sq. Ft, Walls: 412 sq. ft