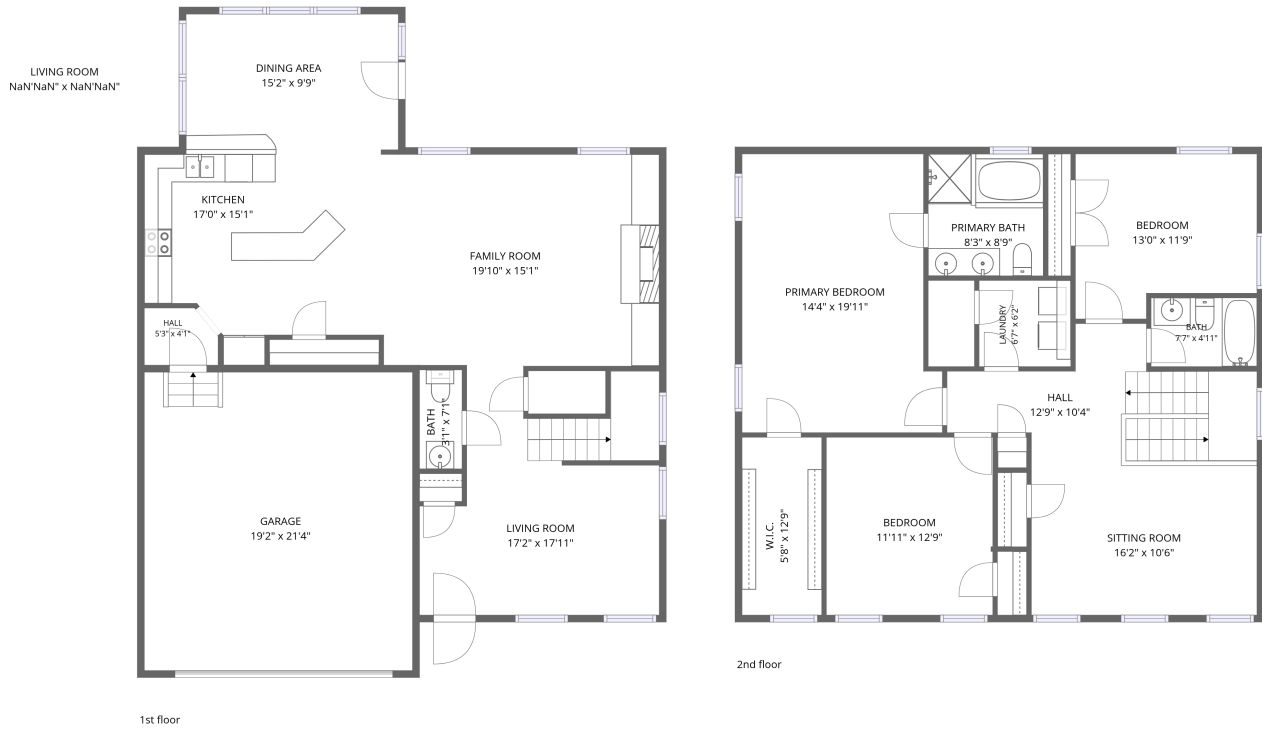


# Home data report

## 712 Appalachian Ct, Chesapeake, VA, US




**Total Area: 2639 sq. ft**

1st Floor: 1424 sq. ft, 2nd Floor: 1215 sq. ft

Excluded: Walls: 175 sq. ft

### Property summary

 **2** Floors

 **3** Bedrooms

 **2** Bathrooms

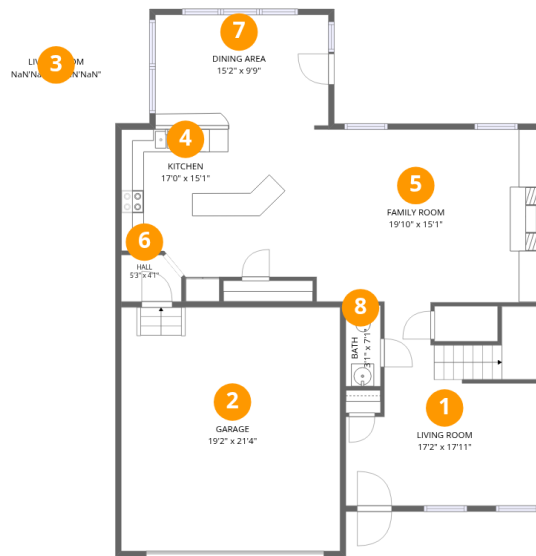
Home data report

# 712 Appalachian Ct, Chesapeake, VA, US

 **1**  
Half baths

 **1**  
Garages

# 712 Appalachian Ct, Chesapeake, VA, US



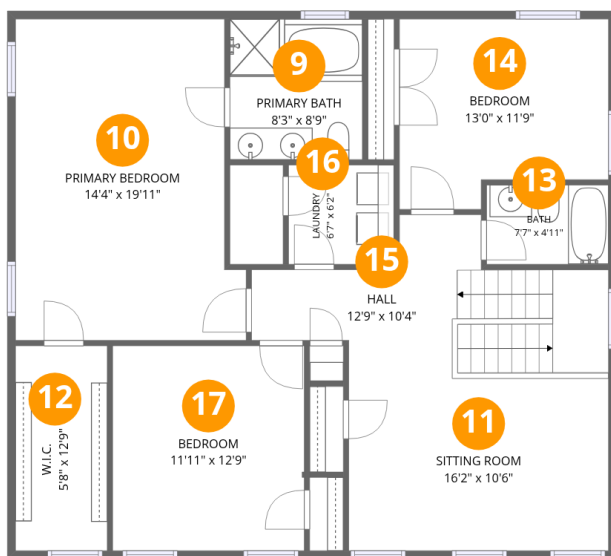
## Room dimensions

Floor 1

Total: 1424 sqft Excluded: 0 sqft

#		Dimensions	sqft	Counted as living area
1	Living Room	17'2" x 17'11"	245 sq. ft	Yes
2	Garage	19'2" x 21'4"	410 sq. ft	Yes
3	Living Room	NaN'NaN" x NaN'NaN"	0 sq. ft	Yes
4	Kitchen	17'0" x 15'1"	220 sq. ft	Yes
5	Family Room	19'10" x 15'1"	300 sq. ft	Yes
6	Hall	5'3" x 4'1"	20 sq. ft	Yes
7	Dining Area	15'2" x 9'9"	147 sq. ft	Yes
8	Bath	3'1" x 7'1"	22 sq. ft	Yes

# 712 Appalachian Ct, Chesapeake, VA, US



## Room dimensions

Floor 2

Total: 1215 sqft Excluded: 0 sqft

#		Dimensions	sqft	Counted as living area
9	Primary Bath	8'3" x 8'9"	72 sq. ft	Yes
10	Primary Bedroom	14'4" x 19'11"	265 sq. ft	Yes
11	Sitting Room	16'2" x 10'6"	170 sq. ft	Yes
12	W.I.C.	5'8" x 12'9"	73 sq. ft	Yes
13	Bath	7'7" x 4'11"	37 sq. ft	Yes
14	Bedroom	13'0" x 11'9"	139 sq. ft	Yes
15	Hall	12'9" x 10'4"	155 sq. ft	Yes
16	Laundry	6'7" x 6'2"	40 sq. ft	Yes
17	Bedroom	11'11" x 12'9"	151 sq. ft	Yes

## 1 Floor 1 - Living Room

---

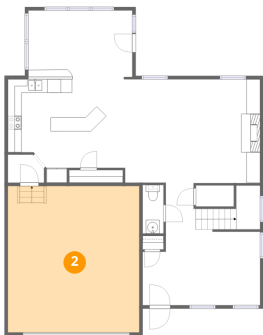


Dimensions: 17'2" x 17'11"  
Area: 245 sq. ft  
Counted as living area: Yes

Heated: Yes  
Finished: Yes  
Enclosed: Yes  
Contiguous: Yes  
Permitted: Yes  
Wet space: No  
Addition: No  
Conversion: No

## 2 Floor 1 - Garage

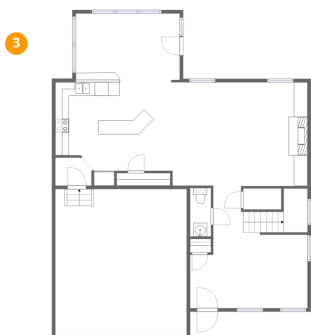
---



Dimensions: 19'2" x 21'4"  
Area: 410 sq. ft  
Counted as living area: No

Heated: No  
Finished: Yes  
Enclosed: Yes  
Contiguous: Yes  
Permitted: Yes  
Wet space: No  
Addition: No  
Conversion: No

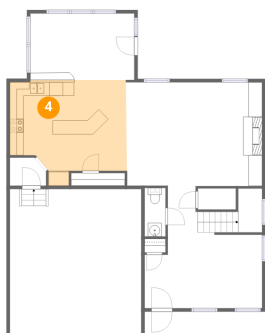
### 3 Floor 1 - Living Room



Dimensions: NaN'NaN" x NaN'NaN"  
Area: 0 sq. ft  
Counted as living area: Yes

Heated: Yes  
Finished: Yes  
Enclosed: Yes  
Contiguous: Yes  
Permitted: Yes  
Wet space: No  
Addition: No  
Conversion: No

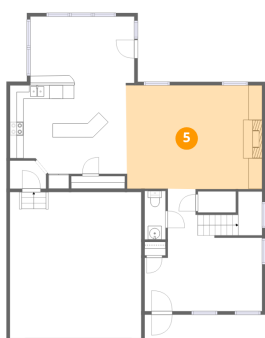
### 4 Floor 1 - Kitchen



Dimensions: 17'0" x 15'1"  
Area: 220 sq. ft  
Counted as living area: Yes

Heated: Yes  
Finished: Yes  
Enclosed: Yes  
Contiguous: Yes  
Permitted: Yes  
Wet space: No  
Addition: No  
Conversion: No

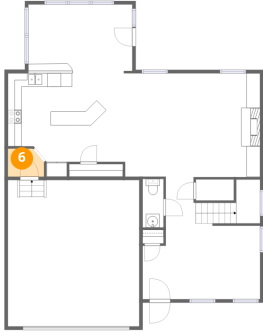
### 5 Floor 1 - Family Room



Dimensions: 19'10" x 15'1"  
Area: 300 sq. ft  
Counted as living area: Yes

Heated: Yes  
Finished: Yes  
Enclosed: Yes  
Contiguous: Yes  
Permitted: Yes  
Wet space: No  
Addition: No  
Conversion: No

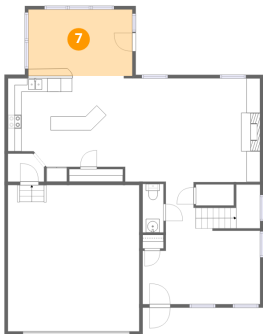
### 6 Floor 1 - Hall



Dimensions: 5'3" x 4'1"  
Area: 20 sq. ft  
Counted as living area: Yes

Heated: Yes  
Finished: Yes  
Enclosed: Yes  
Contiguous: Yes  
Permitted: Yes  
Wet space: No  
Addition: No  
Conversion: No

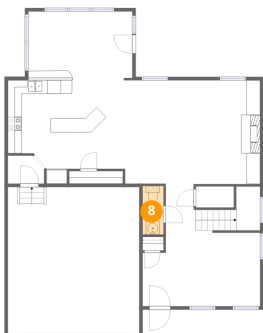
### 7 Floor 1 - Dining Area



Dimensions: 15'2" x 9'9"  
Area: 147 sq. ft  
Counted as living area: Yes

Heated: Yes  
Finished: Yes  
Enclosed: Yes  
Contiguous: Yes  
Permitted: Yes  
Wet space: No  
Addition: No  
Conversion: No

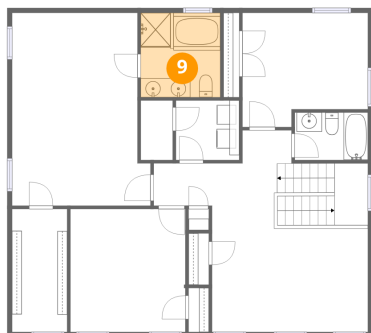
### 8 Floor 1 - Bath



Dimensions: 3'1" x 7'1"  
Area: 22 sq. ft  
Counted as living area: Yes

Heated: Yes  
Finished: Yes  
Enclosed: Yes  
Contiguous: Yes  
Permitted: Yes  
Wet space: Yes  
Addition: No  
Conversion: No

### 9 Floor 2 - Primary Bath



Dimensions: 8'3" x 8'9"  
Area: 72 sq. ft  
Counted as living area: Yes

Heated: Yes  
Finished: Yes  
Enclosed: Yes  
Contiguous: Yes  
Permitted: Yes  
Wet space: Yes  
Addition: No  
Conversion: No

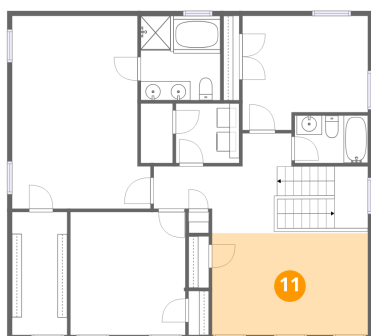
### 10 Floor 2 - Primary Bedroom



Dimensions: 14'4" x 19'11"  
Area: 265 sq. ft  
Counted as living area: Yes

Heated: Yes  
Finished: Yes  
Enclosed: Yes  
Contiguous: Yes  
Permitted: Yes  
Wet space: No  
Addition: No  
Conversion: No

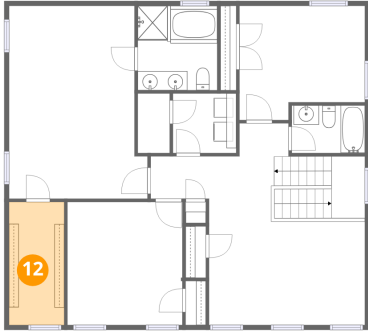
### 11 Floor 2 - Sitting Room



Dimensions: 16'2" x 10'6"  
Area: 170 sq. ft  
Counted as living area: Yes

Heated: Yes  
Finished: Yes  
Enclosed: Yes  
Contiguous: Yes  
Permitted: Yes  
Wet space: No  
Addition: No  
Conversion: No

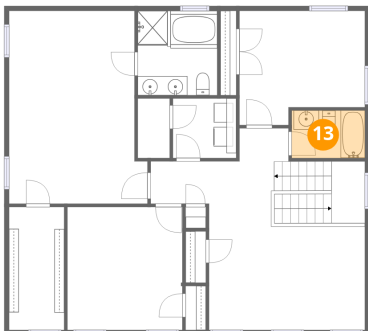
**12** Floor 2 - W.I.C.



Dimensions: 5'8" x 12'9"  
Area: 73 sq. ft  
Counted as living area: Yes

Heated: Yes  
Finished: Yes  
Enclosed: Yes  
Contiguous: Yes  
Permitted: Yes  
Wet space: No  
Addition: No  
Conversion: No

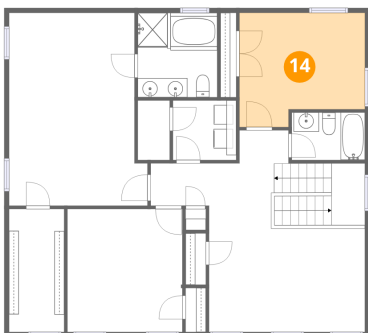
**13** Floor 2 - Bath



Dimensions: 7'7" x 4'11"  
Area: 37 sq. ft  
Counted as living area: Yes

Heated: Yes  
Finished: Yes  
Enclosed: Yes  
Contiguous: Yes  
Permitted: Yes  
Wet space: Yes  
Addition: No  
Conversion: No

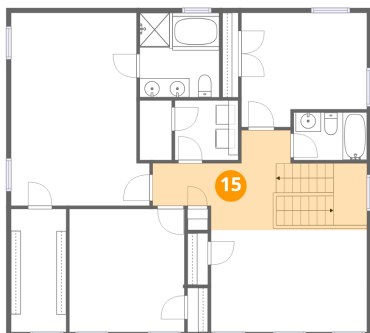
**14** Floor 2 - Bedroom



Dimensions: 13'0" x 11'9"  
Area: 139 sq. ft  
Counted as living area: Yes

Heated: Yes  
Finished: Yes  
Enclosed: Yes  
Contiguous: Yes  
Permitted: Yes  
Wet space: No  
Addition: No  
Conversion: No

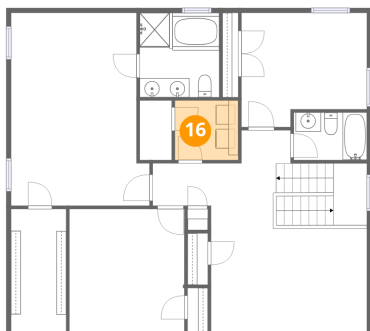
**15** Floor 2 - Hall



Dimensions: 12'9" x 10'4"  
Area: 155 sq. ft  
Counted as living area: Yes

Heated: Yes  
Finished: Yes  
Enclosed: Yes  
Contiguous: Yes  
Permitted: Yes  
Wet space: No  
Addition: No  
Conversion: No

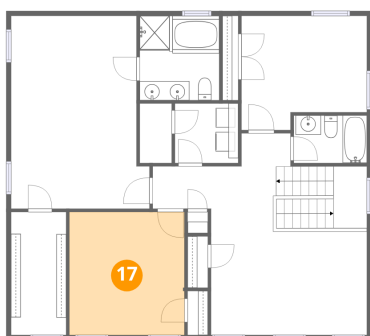
**16** Floor 2 - Laundry



Dimensions: 6'7" x 6'2"  
Area: 40 sq. ft  
Counted as living area: Yes

Heated: Yes  
Finished: Yes  
Enclosed: Yes  
Contiguous: Yes  
Permitted: Yes  
Wet space: No  
Addition: No  
Conversion: No

**17** Floor 2 - Bedroom



Dimensions: 11'11" x 12'9"  
Area: 151 sq. ft  
Counted as living area: Yes

Heated: Yes  
Finished: Yes  
Enclosed: Yes  
Contiguous: Yes  
Permitted: Yes  
Wet space: No  
Addition: No  
Conversion: No