

1st floor

Total Area: 1047 sq. ft

1st Floor: 1047 sq. ft

Excluded: Screened porch 292 sq. ft, Deck 107 sq. ft, Covered deck 77 sq. ft, Walls: 105 sq. ft

Property summary



1 Floors



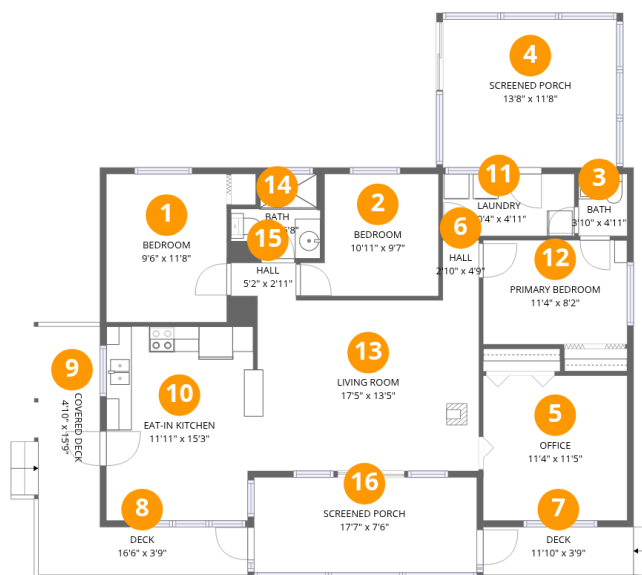
3 Bedrooms



1 Bathrooms



1 Half baths



Room dimensions

Floor 1

Total: 1047sqft Excluded: 476sqft

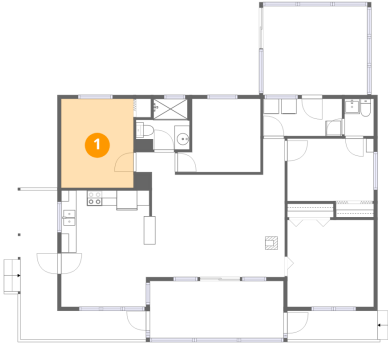
#		Dimensions	sqft	Counted as living area
1	Bedroom	9'6" x 11'8"	111 sq. ft	Yes
2	Bedroom	10'11" x 9'7"	105 sq. ft	Yes
3	Bath	3'10" x 4'11"	19 sq. ft	Yes
4	Screened Porch	13'8" x 11'8"	159 sq. ft	No
5	Office	11'4" x 11'5"	129 sq. ft	Yes
6	Hall	2'10" x 4'9"	13 sq. ft	Yes
7	Deck	11'10" x 3'9"	45 sq. ft	No
8	Deck	16'6" x 3'9"	62 sq. ft	No
9	Covered Deck	4'10" x 15'9"	76 sq. ft	No
10	Eat-in Kitchen	11'11" x 15'3"	182 sq. ft	Yes
11	Laundry	10'4" x 4'11"	51 sq. ft	Yes

Home data report

1087 Glenmount Rd,Baysville,ON,CA

#		Dimensions	sqft	Counted as living area
12	Primary Bedroom	11'4" x 8'2"	93 sq. ft	Yes
13	Living Room	17'5" x 13'5"	235 sq. ft	Yes
14	Bath	7'0" x 6'8"	47 sq. ft	Yes
15	Hall	5'2" x 2'11"	15 sq. ft	Yes
16	Screened Porch	17'7" x 7'6"	132 sq. ft	No

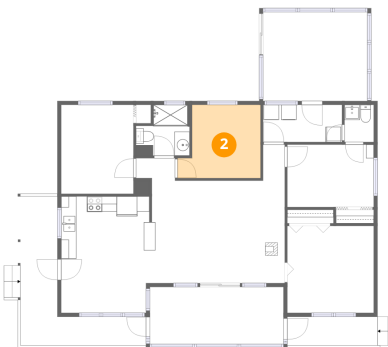
1 Floor 1 - Bedroom



Dimensions: 9'6" x 11'8"
Area: 111 sq. ft
Counted as living area: Yes

Heated: Yes
Finished: Yes
Enclosed: Yes
Contiguous: Yes
Permitted: Yes
Wet space: No
Addition: No
Conversion: No

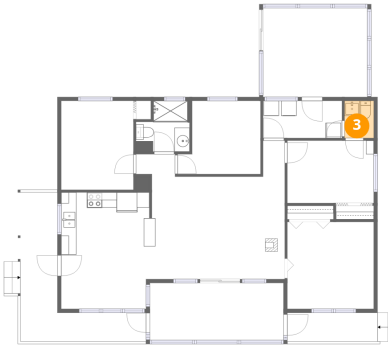
2 Floor 1 - Bedroom



Dimensions: 10'11" x 9'7"
Area: 105 sq. ft
Counted as living area: Yes

Heated: Yes
Finished: Yes
Enclosed: Yes
Contiguous: Yes
Permitted: Yes
Wet space: No
Addition: No
Conversion: No

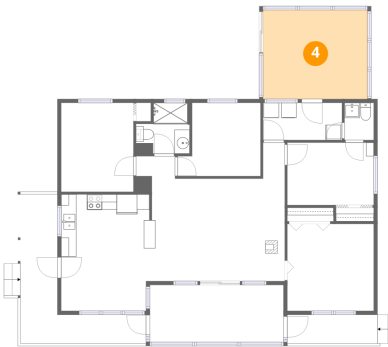
3 Floor 1 - Bath



Dimensions: 3'10" x 4'11"
Area: 19 sq. ft
Counted as living area: Yes

Heated: Yes
Finished: Yes
Enclosed: Yes
Contiguous: Yes
Permitted: Yes
Wet space: Yes
Addition: No
Conversion: No

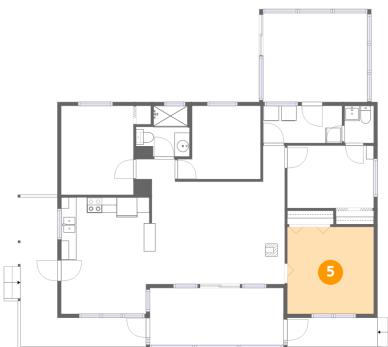
4 Floor 1 - Screened Porch



Dimensions: 13'8" x 11'8"
Area: 159 sq. ft
Counted as living area: No

Heated: No
Finished: No
Enclosed: No
Contiguous: Yes
Permitted: Yes
Wet space: No
Addition: No
Conversion: No

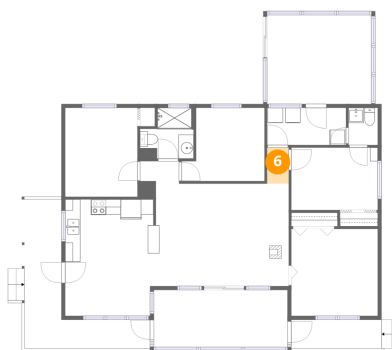
5 Floor 1 - Office



Dimensions: 11'4" x 11'5"
Area: 129 sq. ft
Counted as living area: Yes

Heated: Yes
Finished: Yes
Enclosed: Yes
Contiguous: Yes
Permitted: Yes
Wet space: No
Addition: No
Conversion: No

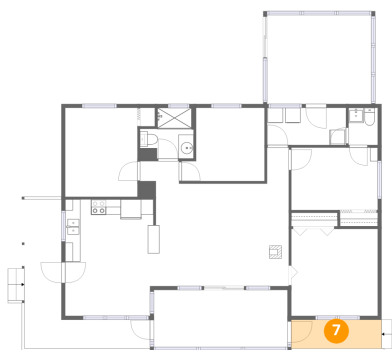
6 Floor 1 - Hall



Dimensions: 2'10" x 4'9"
Area: 13 sq. ft
Counted as living area: Yes

Heated: Yes
Finished: Yes
Enclosed: Yes
Contiguous: Yes
Permitted: Yes
Wet space: No
Addition: No
Conversion: No

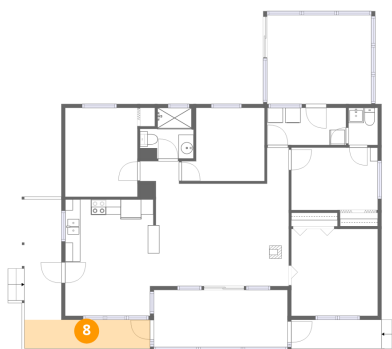
7 Floor 1 - Deck



Dimensions: 11'10" x 3'9"
Area: 45 sq. ft
Counted as living area: No

Heated: No
Finished: No
Enclosed: No
Contiguous: Yes
Permitted: Yes
Wet space: No
Addition: No
Conversion: No

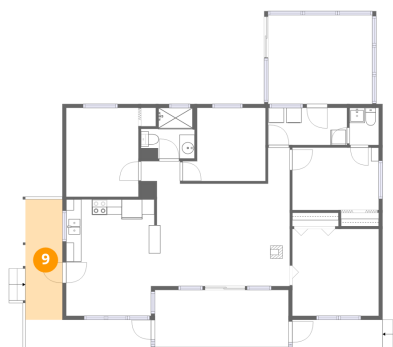
8 Floor 1 - Deck



Dimensions: 16'6" x 3'9"
Area: 62 sq. ft
Counted as living area: No

Heated: No
Finished: No
Enclosed: No
Contiguous: Yes
Permitted: Yes
Wet space: No
Addition: No
Conversion: No

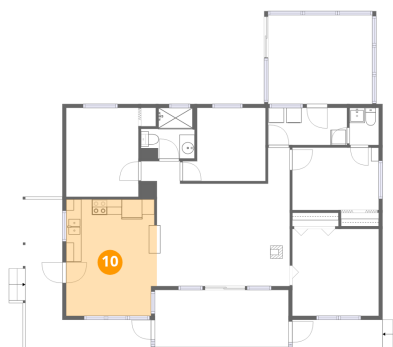
9 Floor 1 - Covered Deck



Dimensions: 4'10" x 15'9"
Area: 76 sq. ft
Counted as living area: No

Heated: No
Finished: No
Enclosed: No
Contiguous: Yes
Permitted: Yes
Wet space: No
Addition: No
Conversion: No

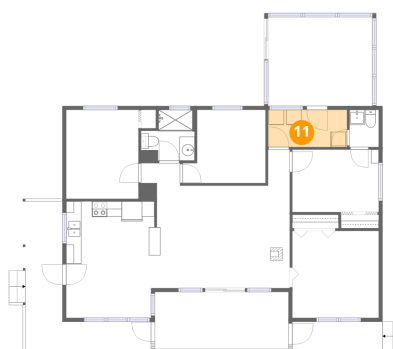
10 Floor 1 - Eat-in Kitchen



Dimensions: 11'11" x 15'3"
Area: 182 sq. ft
Counted as living area: Yes

Heated: Yes
Finished: Yes
Enclosed: Yes
Contiguous: Yes
Permitted: Yes
Wet space: No
Addition: No
Conversion: No

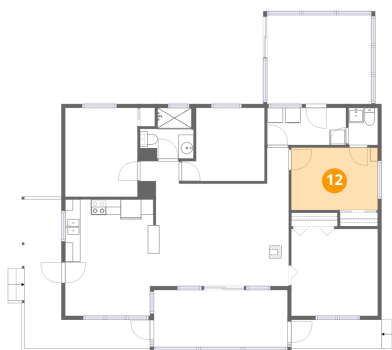
11 Floor 1 - Laundry



Dimensions: 10'4" x 4'11"
Area: 51 sq. ft
Counted as living area: Yes

Heated: Yes
Finished: Yes
Enclosed: Yes
Contiguous: Yes
Permitted: Yes
Wet space: No
Addition: No
Conversion: No

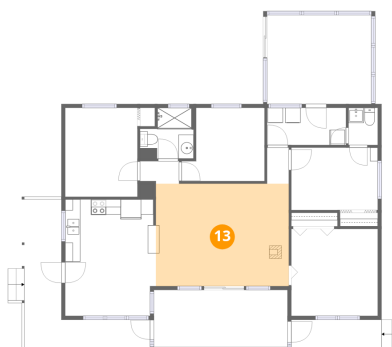
12 Floor 1 - Primary Bedroom



Dimensions: 11'4" x 8'2"
Area: 93 sq. ft
Counted as living area: Yes

Heated: Yes
Finished: Yes
Enclosed: Yes
Contiguous: Yes
Permitted: Yes
Wet space: No
Addition: No
Conversion: No

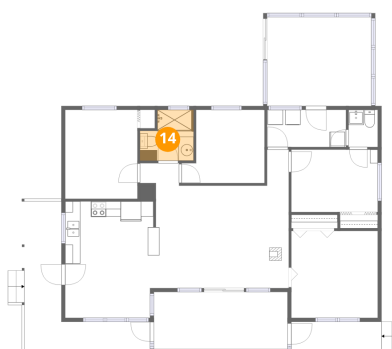
13 Floor 1 - Living Room



Dimensions: 17'5" x 13'5"
Area: 235 sq. ft
Counted as living area: Yes

Heated: Yes
Finished: Yes
Enclosed: Yes
Contiguous: Yes
Permitted: Yes
Wet space: No
Addition: No
Conversion: No

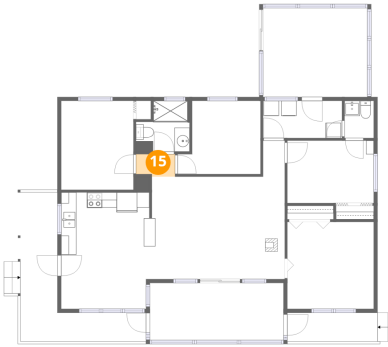
14 Floor 1 - Bath



Dimensions: 7'0" x 6'8"
Area: 47 sq. ft
Counted as living area: Yes

Heated: Yes
Finished: Yes
Enclosed: Yes
Contiguous: Yes
Permitted: Yes
Wet space: Yes
Addition: No
Conversion: No

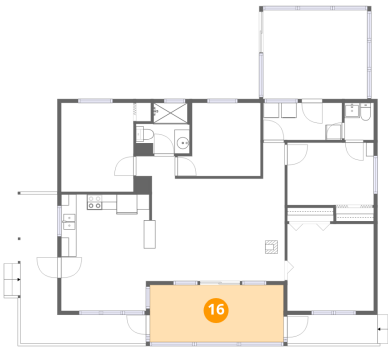
15 Floor 1 - Hall



Dimensions: 5'2" x 2'11"
Area: 15 sq. ft
Counted as living area: Yes

Heated: Yes
Finished: Yes
Enclosed: Yes
Contiguous: Yes
Permitted: Yes
Wet space: No
Addition: No
Conversion: No

16 Floor 1 - Screened Porch



Dimensions: 17'7" x 7'6"
Area: 132 sq. ft
Counted as living area: No

Heated: No
Finished: No
Enclosed: No
Contiguous: Yes
Permitted: Yes
Wet space: No
Addition: No
Conversion: No