



Total Area: 2134 sq. ft

Basement: 0 sq. ft, 1st Floor: 1142 sq. ft, 2nd Floor: 992 sq. ft

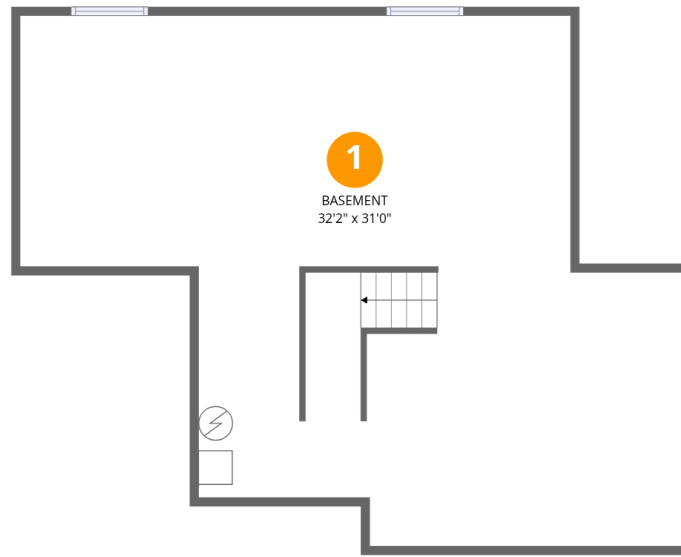
Excluded: Basement 902 sq. ft, Garage 604 sq. ft, Walls: 257 sq. ft

Property summary



Home data report

10075 Sedalia St, Commerce City, CO, US



Room dimensions

Floor 1 Below grade

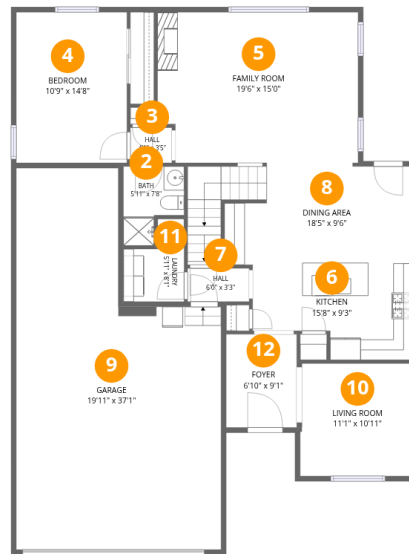
Total: 0 sqft

Excluded: 902 sqft

#		Dimensions	sqft	Counted as living area
1	Basement	32'2" x 31'0"	902 sq. ft	No

Home data report

10075 Sedalia St, Commerce City, CO, US



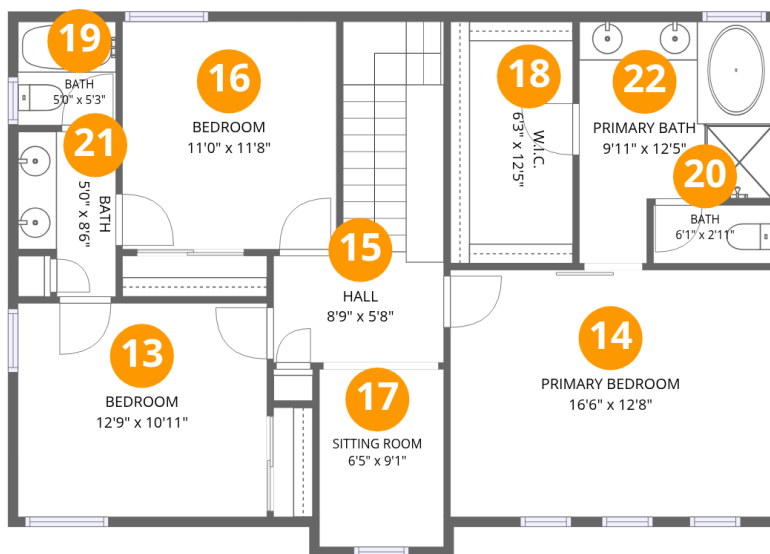
Room dimensions

Floor 2

Total: 1142sqft

Excluded: 604sqft

#		Dimensions	sqft	Counted as living area
2	Bath	5'11" x 7'8"	37 sq. ft	Yes
3	Hall	4'1" x 3'5"	14 sq. ft	Yes
4	Bedroom	10'9" x 14'8"	158 sq. ft	Yes
5	Family Room	19'6" x 15'0"	283 sq. ft	Yes
6	Kitchen	15'8" x 9'3"	124 sq. ft	Yes
7	Hall	6'0" x 3'3"	19 sq. ft	Yes
8	Dining Area	18'5" x 9'6"	207 sq. ft	Yes
9	Garage	19'11" x 37'1"	604 sq. ft	No
10	Living Room	11'1" x 10'11"	120 sq. ft	Yes
11	Laundry	5'11" x 8'1"	38 sq. ft	Yes
12	Foyer	6'10" x 9'1"	62 sq. ft	Yes



Room dimensions

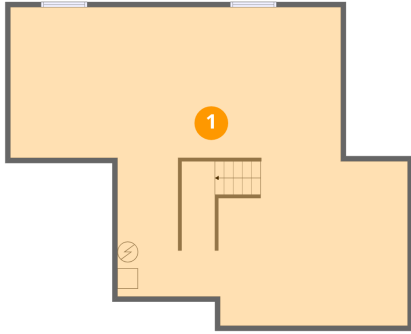
Floor 3

Total:992sqft

Excluded: 0sqft

#		Dimensions	sqft	Counted as living area
13	Bedroom	12'9" x 10'11"	140 sq. ft	Yes
14	Primary Bedroom	16'6" x 12'8"	209 sq. ft	Yes
15	Hall	8'9" x 5'8"	110 sq. ft	Yes
16	Bedroom	11'0" x 11'8"	128 sq. ft	Yes
17	Sitting Room	6'5" x 9'1"	58 sq. ft	Yes
18	W.I.C.	6'3" x 12'5"	78 sq. ft	Yes
19	Bath	5'0" x 5'3"	27 sq. ft	Yes
20	Bath	6'1" x 2'11"	18 sq. ft	Yes
21	Bath	5'0" x 8'6"	38 sq. ft	Yes
22	Primary Bath	9'11" x 12'5"	101 sq. ft	Yes

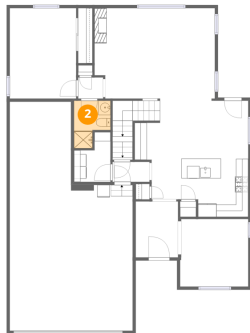
1 Floor 1 - Basement



Dimensions: 32'2" x 31'0"
Area: 902 sq. ft
Counted as living area: No

Heated: Yes
Finished: No
Enclosed: Yes
Contiguous: Yes
Permitted: Yes
Wet space: No
Addition: No
Conversion: No

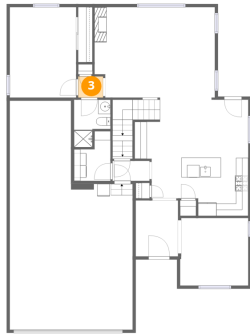
2 Floor 2 - Bath



Dimensions: 5'11" x 7'8"
Area: 37 sq. ft
Counted as living area: Yes

Heated: Yes
Finished: Yes
Enclosed: Yes
Contiguous: Yes
Permitted: Yes
Wet space: Yes
Addition: No
Conversion: No

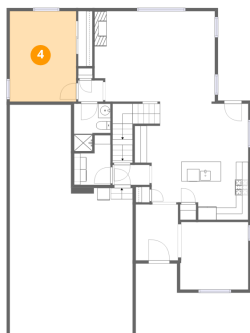
3 Floor 2 - Hall



Dimensions: 4'1" x 3'5"
Area: 14 sq. ft
Counted as living area: Yes

Heated: Yes
Finished: Yes
Enclosed: Yes
Contiguous: Yes
Permitted: Yes
Wet space: No
Addition: No
Conversion: No

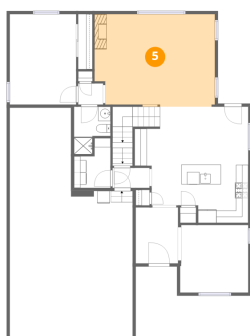
4 Floor 2 - Bedroom



Dimensions: 10'9" x 14'8"
Area: 158 sq. ft
Counted as living area: Yes

Heated: Yes
Finished: Yes
Enclosed: Yes
Contiguous: Yes
Permitted: Yes
Wet space: No
Addition: No
Conversion: No

5 Floor 2 - Family Room



Dimensions: 19'6" x 15'0"
Area: 283 sq. ft
Counted as living area: Yes

Heated: Yes
Finished: Yes
Enclosed: Yes
Contiguous: Yes
Permitted: Yes
Wet space: No
Addition: No
Conversion: No

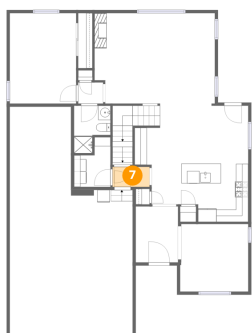
6 Floor 2 - Kitchen



Dimensions: 15'8" x 9'3"
Area: 124 sq. ft
Counted as living area: Yes

Heated: Yes
Finished: Yes
Enclosed: Yes
Contiguous: Yes
Permitted: Yes
Wet space: No
Addition: No
Conversion: No

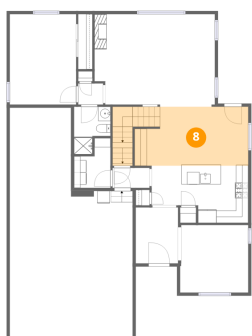
7 Floor 2 - Hall



Dimensions: 6'0" x 3'3"
Area: 19 sq. ft
Counted as living area: Yes

Heated: Yes
Finished: Yes
Enclosed: Yes
Contiguous: Yes
Permitted: Yes
Wet space: No
Addition: No
Conversion: No

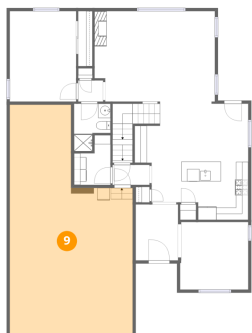
8 Floor 2 - Dining Area



Dimensions: 18'5" x 9'6"
Area: 207 sq. ft
Counted as living area: Yes

Heated: Yes
Finished: Yes
Enclosed: Yes
Contiguous: Yes
Permitted: Yes
Wet space: No
Addition: No
Conversion: No

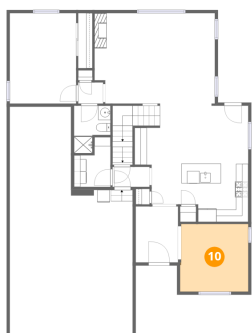
9 Floor 2 - Garage



Dimensions: 19'11" x 37'1"
Area: 604 sq. ft
Counted as living area: No

Heated: No
Finished: No
Enclosed: Yes
Contiguous: Yes
Permitted: Yes
Wet space: No
Addition: No
Conversion: No

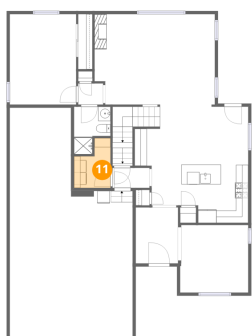
10 Floor 2 - Living Room



Dimensions: 11'1" x 10'11"
Area: 120 sq. ft
Counted as living area: Yes

Heated: Yes
Finished: Yes
Enclosed: Yes
Contiguous: Yes
Permitted: Yes
Wet space: No
Addition: No
Conversion: No

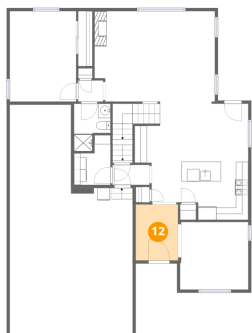
11 Floor 2 - Laundry



Dimensions: 5'11" x 8'1"
Area: 38 sq. ft
Counted as living area: Yes

Heated: Yes
Finished: Yes
Enclosed: Yes
Contiguous: Yes
Permitted: Yes
Wet space: No
Addition: No
Conversion: No

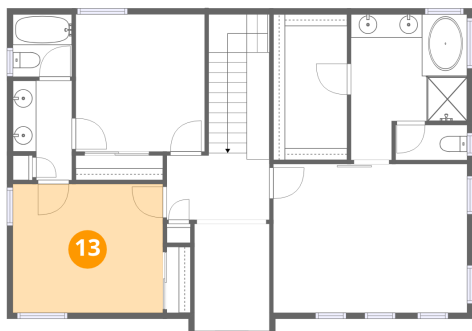
12 Floor 2 - Foyer



Dimensions: 6'10" x 9'1"
Area: 62 sq. ft
Counted as living area: Yes

Heated: Yes
Finished: Yes
Enclosed: Yes
Contiguous: Yes
Permitted: Yes
Wet space: No
Addition: No
Conversion: No

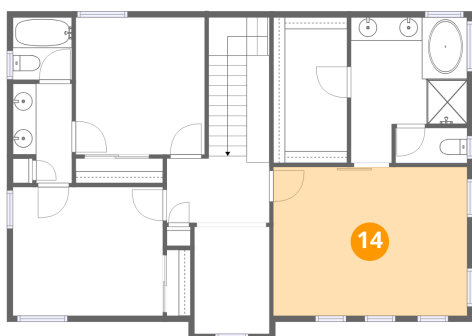
13 Floor 3 - Bedroom



Dimensions: 12'9" x 10'11"
Area: 140 sq. ft
Counted as living area: Yes

Heated: Yes
Finished: Yes
Enclosed: Yes
Contiguous: Yes
Permitted: Yes
Wet space: No
Addition: No
Conversion: No

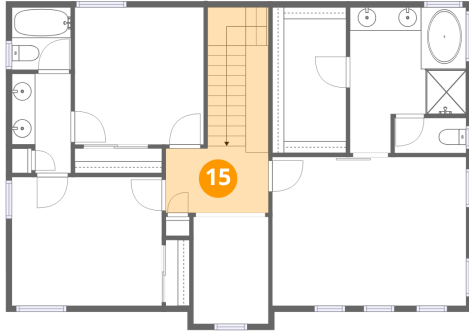
14 Floor 3 - Primary Bedroom



Dimensions: 16'6" x 12'8"
Area: 209 sq. ft
Counted as living area: Yes

Heated: Yes
Finished: Yes
Enclosed: Yes
Contiguous: Yes
Permitted: Yes
Wet space: No
Addition: No
Conversion: No

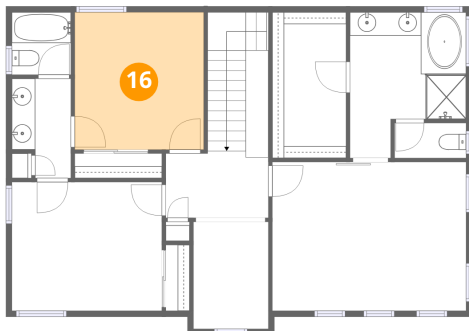
15 Floor 3 - Hall



Dimensions: 8'9" x 5'8"
Area: 110 sq. ft
Counted as living area: Yes

Heated: Yes
Finished: Yes
Enclosed: Yes
Contiguous: Yes
Permitted: Yes
Wet space: No
Addition: No
Conversion: No

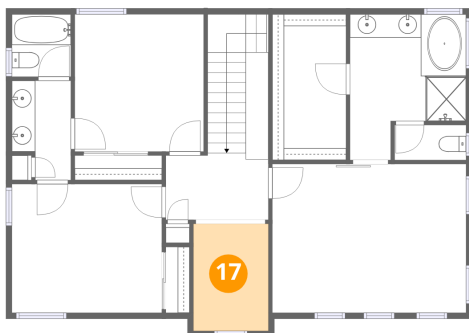
16 Floor 3 - Bedroom



Dimensions: 11'0" x 11'8"
Area: 128 sq. ft
Counted as living area: Yes

Heated: Yes
Finished: Yes
Enclosed: Yes
Contiguous: Yes
Permitted: Yes
Wet space: No
Addition: No
Conversion: No

17 Floor 3 - Sitting Room



Dimensions: 6'5" x 9'1"
Area: 58 sq. ft
Counted as living area: Yes

Heated: Yes
Finished: Yes
Enclosed: Yes
Contiguous: Yes
Permitted: Yes
Wet space: No
Addition: No
Conversion: No

18 Floor 3 - W.I.C.



Dimensions: 6'3" x 12'5"
Area: 78 sq. ft
Counted as living area: Yes

Heated: Yes
Finished: Yes
Enclosed: Yes
Contiguous: Yes
Permitted: Yes
Wet space: No
Addition: No
Conversion: No

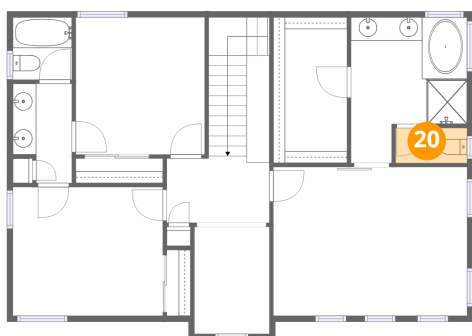
19 Floor 3 - Bath



Dimensions: 5'0" x 5'3"
Area: 27 sq. ft
Counted as living area: Yes

Heated: Yes
Finished: Yes
Enclosed: Yes
Contiguous: Yes
Permitted: Yes
Wet space: Yes
Addition: No
Conversion: No

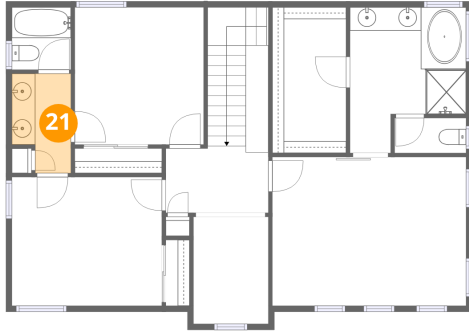
20 Floor 3 - Bath



Dimensions: 6'1" x 2'11"
Area: 18 sq. ft
Counted as living area: Yes

Heated: Yes
Finished: Yes
Enclosed: Yes
Contiguous: Yes
Permitted: Yes
Wet space: Yes
Addition: No
Conversion: No

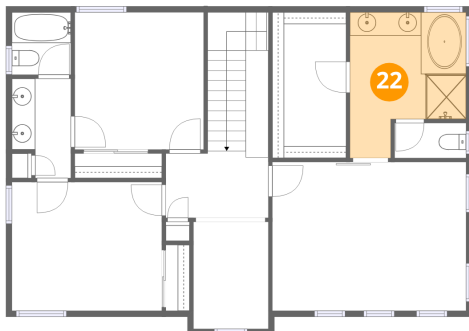
21 Floor 3 - Bath



Dimensions: 5'0" x 8'6"
Area: 38 sq. ft
Counted as living area: Yes

Heated: Yes
Finished: Yes
Enclosed: Yes
Contiguous: Yes
Permitted: Yes
Wet space: Yes
Addition: No
Conversion: No

22 Floor 3 - Primary Bath



Dimensions: 9'11" x 12'5"
Area: 101 sq. ft
Counted as living area: Yes

Heated: Yes
Finished: Yes
Enclosed: Yes
Contiguous: Yes
Permitted: Yes
Wet space: Yes
Addition: No
Conversion: No