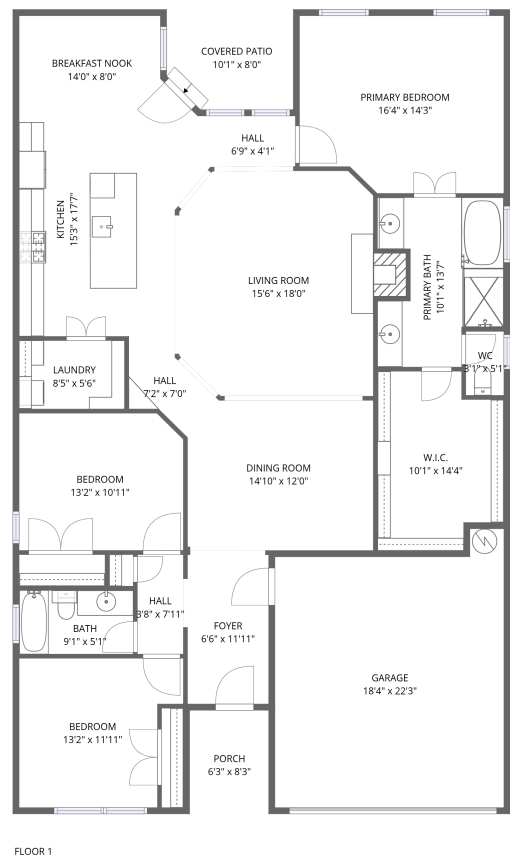


Home report

4509 Moonlight Drive, McKinney, Collin County, Texas, United States, 75071



Total Area: 1918 sq. ft

Floor 1: 1918 sq. ft

Excluded: Garage 373 sq. ft, Porch 52 sq. ft, Covered patio 77 sq. ft, Walls: 135 sq. ft

Property summary

1 Floors

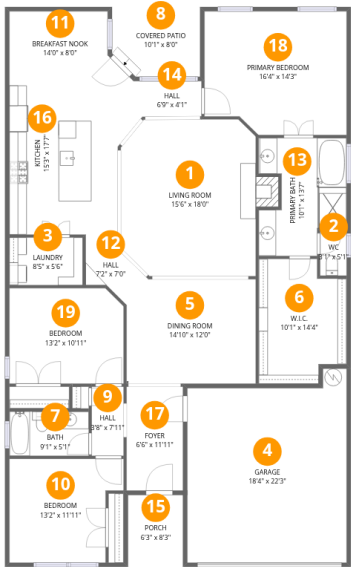
3 Bedrooms

2 Bathrooms

1 Garages

Home report

4509 Moonlight Drive, McKinney, Collin County, Texas, United States, 75071



Room dimensions

Floor 1

Total:1918sqft Excluded: 502sqft

#		Max Dimensions	sqft	Included
1	Living Room	15'6" x 18'0"	277 sq. ft	Yes
2	WC	3'1" x 5'1"	16 sq. ft	Yes
3	Laundry	8'5" x 5'6"	46 sq. ft	Yes
4	Garage	18'4" x 22'3"	373 sq. ft	No
5	Dining Room	14'10" x 12'0"	174 sq. ft	Yes
6	W.I.C.	10'1" x 14'4"	130 sq. ft	Yes
7	Bath	9'1" x 5'1"	46 sq. ft	Yes
8	Covered Patio	10'1" x 8'0"	77 sq. ft	No
9	Hall	3'8" x 7'11"	29 sq. ft	Yes
10	Bedroom	13'2" x 11'11"	140 sq. ft	Yes
11	Breakfast Nook	14'0" x 8'0"	95 sq. ft	Yes

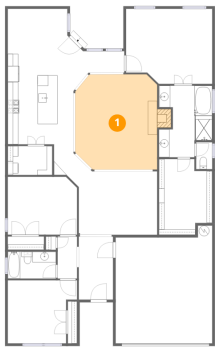
Home report

4509 Moonlight Drive, McKinney, Collin County, Texas, United States, 75071

#		Max Dimensions	sqft	Included
12	Hall	7'2" x 7'0"	35 sq. ft	Yes
13	Primary Bath	10'1" x 13'7"	115 sq. ft	Yes
14	Hall	6'9" x 4'1"	28 sq. ft	Yes
15	Porch	6'3" x 8'3"	52 sq. ft	No
16	Kitchen	15'3" x 17'7"	236 sq. ft	Yes
17	Foyer	6'6" x 11'11"	77 sq. ft	Yes
18	Primary Bedroom	16'4" x 14'3"	221 sq. ft	Yes
19	Bedroom	13'2" x 10'11"	142 sq. ft	Yes

4509 Moonlight Drive, McKinney, Collin County, Texas, United States, 75071

1 Floor 1 - Living Room



Max Dimensions: 15'6" x 18'0"
Calculated Area: 277 sq. ft
Included: Yes

Heated: Yes
Finished: Yes
Enclosed: Yes
Contiguous: Yes
Permitted: Yes
Wet space: No
Addition: No
Conversion: No

2 Floor 1 - WC



Max Dimensions: 3'1" x 5'1"
Calculated Area: 16 sq. ft
Included: Yes

Heated: Yes
Finished: Yes
Enclosed: Yes
Contiguous: Yes
Permitted: Yes
Wet space: Yes
Addition: No
Conversion: No

4509 Moonlight Drive, McKinney, Collin County, Texas, United States, 75071

3 Floor 1 - Laundry



Max Dimensions: 8'5" x 5'6"
Calculated Area: 46 sq. ft
Included: Yes

Heated: Yes
Finished: Yes
Enclosed: Yes
Contiguous: Yes
Permitted: Yes
Wet space: No
Addition: No
Conversion: No

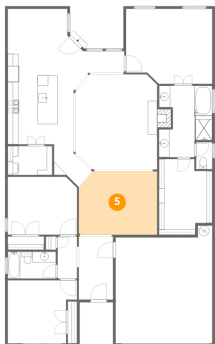
4 Floor 1 - Garage



Max Dimensions: 18'4" x 22'3"
Calculated Area: 373 sq. ft
Included: No

Heated: No
Finished: No
Enclosed: Yes
Contiguous: Yes
Permitted: Yes
Wet space: No
Addition: No
Conversion: No

5 Floor 1 - Dining Room



Max Dimensions: 14'10" x 12'0"
Calculated Area: 174 sq. ft
Included: Yes

Heated: Yes
Finished: Yes
Enclosed: Yes
Contiguous: Yes
Permitted: Yes
Wet space: No
Addition: No
Conversion: No

4509 Moonlight Drive, McKinney, Collin County, Texas, United States, 75071

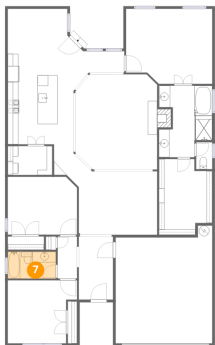
6 Floor 1 - W.I.C.



Max Dimensions: 10'1" x 14'4"
Calculated Area: 130 sq. ft
Included: Yes

Heated: Yes
Finished: Yes
Enclosed: Yes
Contiguous: Yes
Permitted: Yes
Wet space: No
Addition: No
Conversion: No

7 Floor 1 - Bath



Max Dimensions: 9'1" x 5'1"
Calculated Area: 46 sq. ft
Included: Yes

Heated: Yes
Finished: Yes
Enclosed: Yes
Contiguous: Yes
Permitted: Yes
Wet space: Yes
Addition: No
Conversion: No

8 Floor 1 - Covered Patio



Max Dimensions: 10'1" x 8'0"
Calculated Area: 77 sq. ft
Included: No

Heated: No
Finished: No
Enclosed: No
Contiguous: Yes
Permitted: Yes
Wet space: No
Addition: No
Conversion: No

4509 Moonlight Drive, McKinney, Collin County, Texas, United States, 75071

9 Floor 1 - Hall



Max Dimensions: 3'8" x 7'11"
Calculated Area: 29 sq. ft
Included: Yes

Heated: Yes
Finished: Yes
Enclosed: Yes
Contiguous: Yes
Permitted: Yes
Wet space: No
Addition: No
Conversion: No

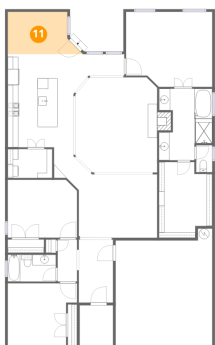
10 Floor 1 - Bedroom



Max Dimensions: 13'2" x 11'11"
Calculated Area: 140 sq. ft
Included: Yes

Heated: Yes
Finished: Yes
Enclosed: Yes
Contiguous: Yes
Permitted: Yes
Wet space: No
Addition: No
Conversion: No

11 Floor 1 - Breakfast Nook



Max Dimensions: 14'0" x 8'0"
Calculated Area: 95 sq. ft
Included: Yes

Heated: Yes
Finished: Yes
Enclosed: Yes
Contiguous: Yes
Permitted: Yes
Wet space: No
Addition: No
Conversion: No

4509 Moonlight Drive, McKinney, Collin County, Texas, United States, 75071

12 Floor 1 - Hall



Max Dimensions: 7'2" x 7'0"
Calculated Area: 35 sq. ft
Included: Yes

Heated: Yes
Finished: Yes
Enclosed: Yes
Contiguous: Yes
Permitted: Yes
Wet space: No
Addition: No
Conversion: No

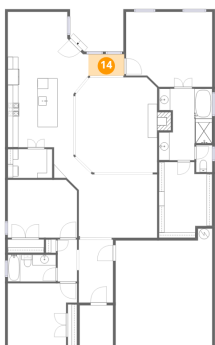
13 Floor 1 - Primary Bath



Max Dimensions: 10'1" x 13'7"
Calculated Area: 115 sq. ft
Included: Yes

Heated: Yes
Finished: Yes
Enclosed: Yes
Contiguous: Yes
Permitted: Yes
Wet space: Yes
Addition: No
Conversion: No

14 Floor 1 - Hall



Max Dimensions: 6'9" x 4'1"
Calculated Area: 28 sq. ft
Included: Yes

Heated: Yes
Finished: Yes
Enclosed: Yes
Contiguous: Yes
Permitted: Yes
Wet space: No
Addition: No
Conversion: No

4509 Moonlight Drive, McKinney, Collin County, Texas, United States, 75071

15 Floor 1 - Porch



Max Dimensions: 6'3" x 8'3"
Calculated Area: 52 sq. ft
Included: No

Heated: No
Finished: No
Enclosed: No
Contiguous: Yes
Permitted: Yes
Wet space: No
Addition: No
Conversion: No

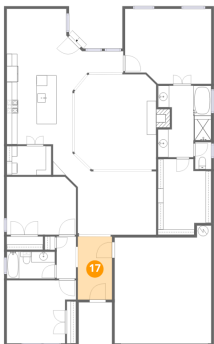
16 Floor 1 - Kitchen



Max Dimensions: 15'3" x 17'7"
Calculated Area: 236 sq. ft
Included: Yes

Heated: Yes
Finished: Yes
Enclosed: Yes
Contiguous: Yes
Permitted: Yes
Wet space: No
Addition: No
Conversion: No

17 Floor 1 - Foyer



Max Dimensions: 6'6" x 11'11"
Calculated Area: 77 sq. ft
Included: Yes

Heated: Yes
Finished: Yes
Enclosed: Yes
Contiguous: Yes
Permitted: Yes
Wet space: No
Addition: No
Conversion: No

4509 Moonlight Drive, McKinney, Collin County, Texas, United States, 75071

18 Floor 1 - Primary Bedroom



Max Dimensions: 16'4" x 14'3"
Calculated Area: 221 sq. ft
Included: Yes

Heated: Yes
Finished: Yes
Enclosed: Yes
Contiguous: Yes
Permitted: Yes
Wet space: No
Addition: No
Conversion: No

19 Floor 1 - Bedroom



Max Dimensions: 13'2" x 10'11"
Calculated Area: 142 sq. ft
Included: Yes

Heated: Yes
Finished: Yes
Enclosed: Yes
Contiguous: Yes
Permitted: Yes
Wet space: No
Addition: No
Conversion: No